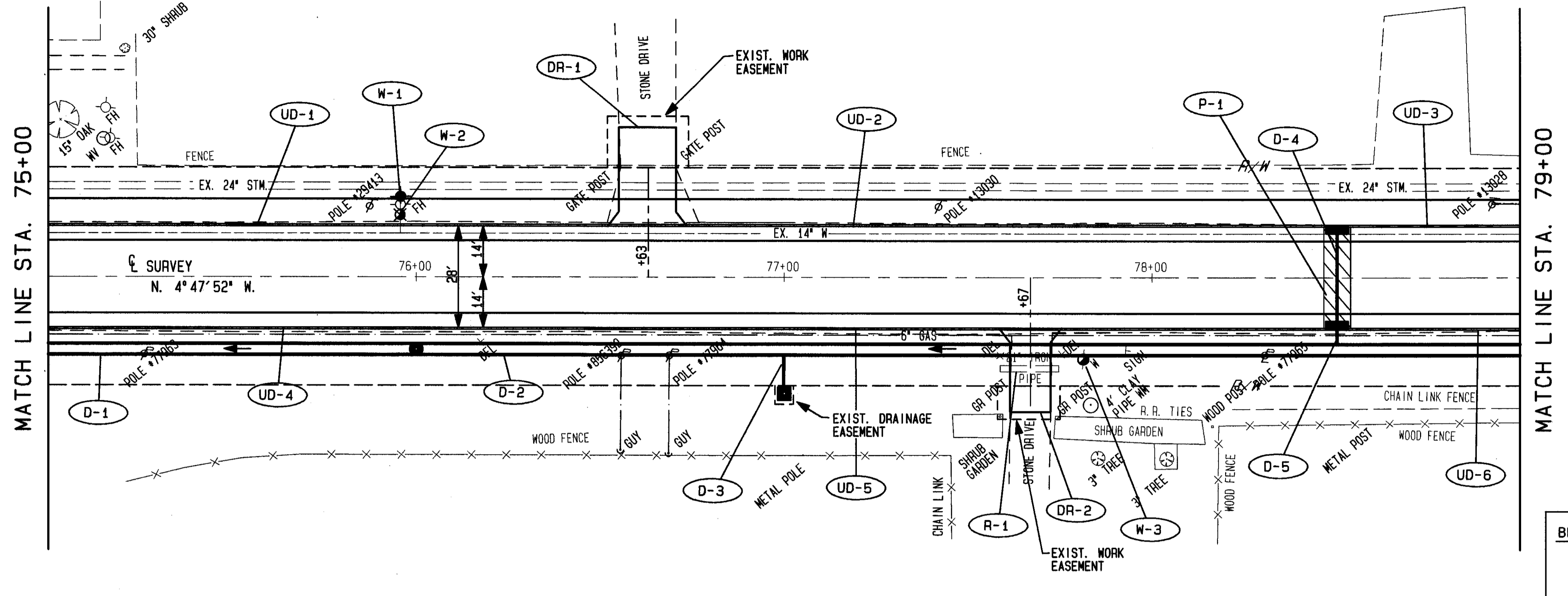


PLAN NO. 271

FOR TYPICAL SECTIONS SEE SHEET 3
 FOR QUANTITY SUB-SUMMARIES SEE SHEET 75 THRU 87
 FOR PAVEMENT MARKING DETAILS SEE SHEET 73 & 74
 FOR CATCH BASIN DETAILS SEE SHEET 69
 FOR DRIVEWAY DETAILS SEE SHEET 68
 FOR PAVEMENT REPAIR DETAILS SEE SHEET 66
 FOR WATERWORK DETAILS SEE SHEET 71 & 72
 FOR DRIVE PROFILES SEE SHEET 59 & 60
 FOR STORM SEWER CROSS CONNECTIONS SEE SHEET 44
 FOR CROSS SECTIONS SEE SHEET 42 THRU 45



BENCHMARK EL. 612.10
 TOP HYDRANT
 IN FRONT OF Q ST.

PROPOSED PROFILE ELEVATIONS	75+00	76+00	77+00	78+00	79+00
620	610.76				610.51
615					
610					
605					
600					
595					
590					
585					
EXISTING PROFILE ELEVATIONS	610.79	610.84	610.91	610.90	610.80

PROPOSED PROFILE: GR. = +0.10% (75+00 to 76+00), GR. = -0.10% (76+00 to 78+00), GR. = -0.20% (78+00 to 79+00)

EXISTING PROFILE: EX. 24" STM. (75+00 to 76+00), EX. 14" W. (76+00 to 77+00), EX. 24" STM. (77+00 to 78+00), EX. 14" W. (78+00 to 79+00)

CONDUIT: 100' - 36" CONDUIT TYPE B @ 0.35% (75+00 to 76+00), 300' - 36" CONDUIT TYPE B @ 0.24% (76+00 to 79+00)

MANHOLE NO. 3: STA. 76+00.00, 20.0' RT. RIM 611.25, 36" INV. 596.50 S, 36" INV. 596.50 N

ITEM	DESCRIPTION	EA.	AMOUNT	TOTAL
603	12" CONDUIT, TYPE C	12	24	12
603	706.02 CONDUIT, TYPE B	12	24	12
603	36" CONDUIT, TYPE B	100	100	100
603	706.02 1250 D-LOAD	300	300	300
604	MANHOLE NO. 3	1	1	1
604	CATCH BASIN NO. 3 AS PER PLAN	2	2	2
604	CATCH BASIN NO. 2-28 AS PER PLAN	1	1	1
638	HYDRANT EXTENDED & ADJUSTED TO GRADE	1	1	1
638	WATER VALVE BOX ADJUSTED TO GRADE	1	1	1
638	TEE - 36" X 12" X 36"	2	2	2
638	SERVICE BOX ADJUSTED TO GRADE	1	1	1
TOTALS				15

ITEM	DESCRIPTION	EA.	AMOUNT	TOTAL
202	PIPE REMOVED 24" AND UNDER	15	15	15
TOTALS				15

90483 THU 01/28/93 04:45 PM JACK FILES: RMB.PLT PRB.PLT PLB.PLT PDOTS.PLT