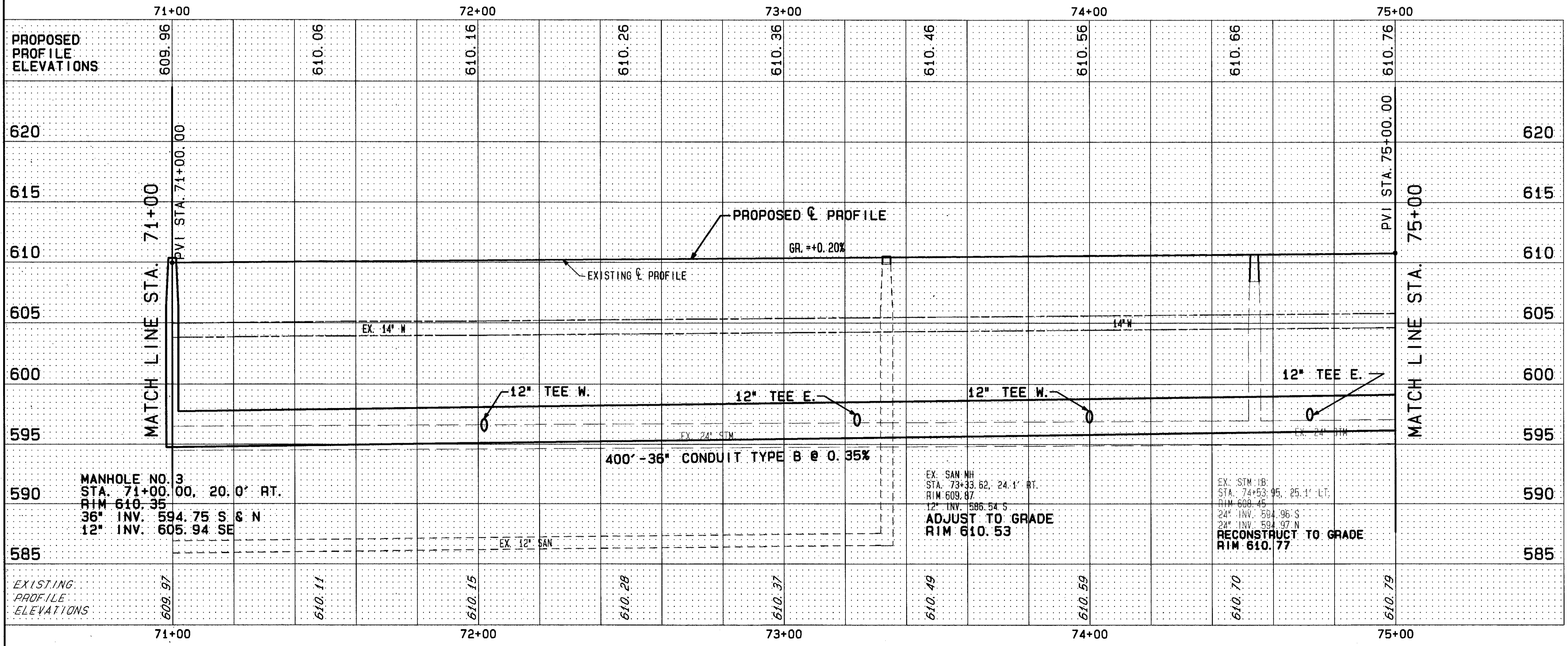
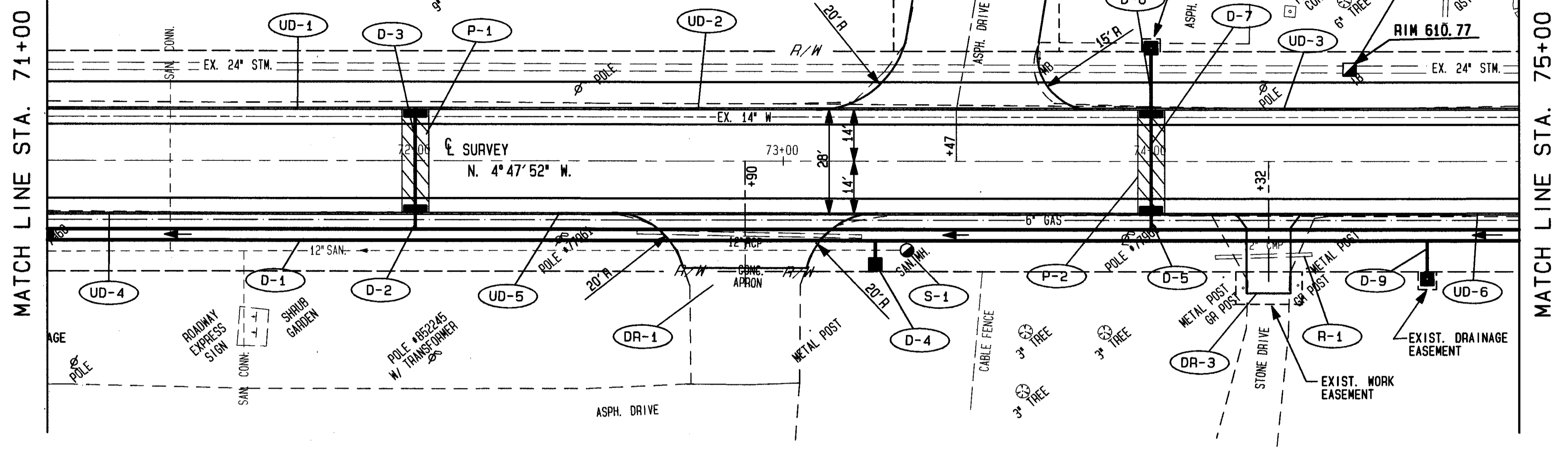


FOR TYPICAL SECTIONS SEE SHEET 3  
 FOR QUANTITY SUB-SUMMARIES SEE SHEET 75 THRU 87  
 FOR PAVEMENT MARKING DETAILS SEE SHEET 73 & 74  
 FOR CATCH BASIN DETAILS SEE SHEET 69  
 FOR DRIVEWAY DETAILS SEE SHEET 68  
 FOR PAVEMENT REPAIR DETAILS SEE SHEET 66  
 FOR WATERWORK DETAILS SEE SHEET 71 & 72  
 FOR DRIVE PROFILES SEE SHEET 59  
 FOR STORM SEWER CROSS CONNECTIONS SEE SHEET 40 & 41  
 FOR CROSS SECTIONS SEE SHEET 39 THRU 42



STATION	DESCRIPTION	TYPE	LENGTH	EA	EA	EA
603	12" CONDUIT, TYPE C		12			
603	36" CONDUIT, TYPE B		400			
604	CATCH BASIN NO. 3	AS PER PLAN	2			
604	CATCH BASIN NO. 2-2B	AS PER PLAN	1			
604	CATCH BASIN RECONSTRUCTED TO GRADE	AS PER PLAN	1			
604	MANHOLE ADJUSTED TO GRADE	EA	4			
604	TEE - 36" X 12" X 36"	EA	4			
			56	68	400	4
			TOTALS			

REF	LOCATION	DESCRIPTION	LENGTH	EA	EA	EA
D-1	STA. 71+00.20' RT. TO STA. 75+00.20' RT.	12" TEE W.	20'			
D-2	STA. 72+00.14' LT. TO STA. 72+00.20' RT.	12" TEE E.	12'			
D-3	STA. 72+00.14' LT. TO STA. 72+00.14' RT.	12" TEE W.	28'			
D-4	STA. 73+25.20' RT. TO STA. 73+25.28' RT.	12" TEE E.	12'			
D-5	STA. 74+00.14' RT. TO STA. 74+00.20' RT.	12" TEE W.	17'			
D-6	STA. 74+00.31' LT. TO STA. 74+00.14' LT.	12" TEE E.	28'			
D-7	STA. 74+00.14' LT. TO STA. 74+00.14' RT.	12" TEE W.	15'			
D-8	STA. 74+55.25' LT.	12" TEE E.				
D-9	STA. 74+75.20' RT. TO STA. 74+75.32' RT.	12" TEE W.				
S-1	STA. 73+35.25' RT.	12" TEE E.				
			56	68	400	4
			TOTALS			

REF	LOCATION	DESCRIPTION	LENGTH	EA	EA	EA
R-1	STA. 74+17 TO STA. 74+44. RT.	PIPE REMOVED	27'			
			27			
			TOTALS			

PLAN & PROFILE STA. 71+00 TO STA. 75+00

90483 THU 01/28/93 04:45 PM JACK FILES: P00TS.PLT PL11.PLT PR11.PLT RW11.PLT