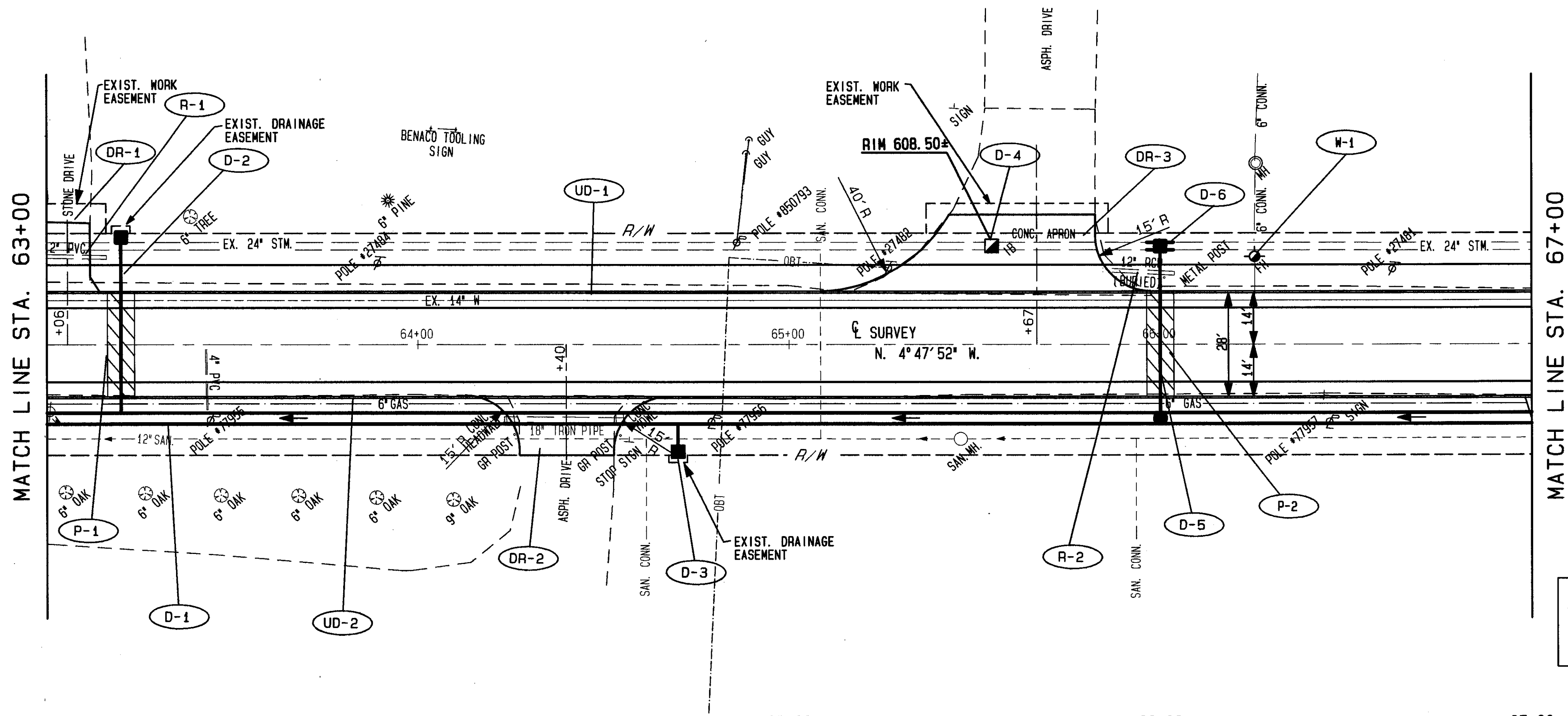
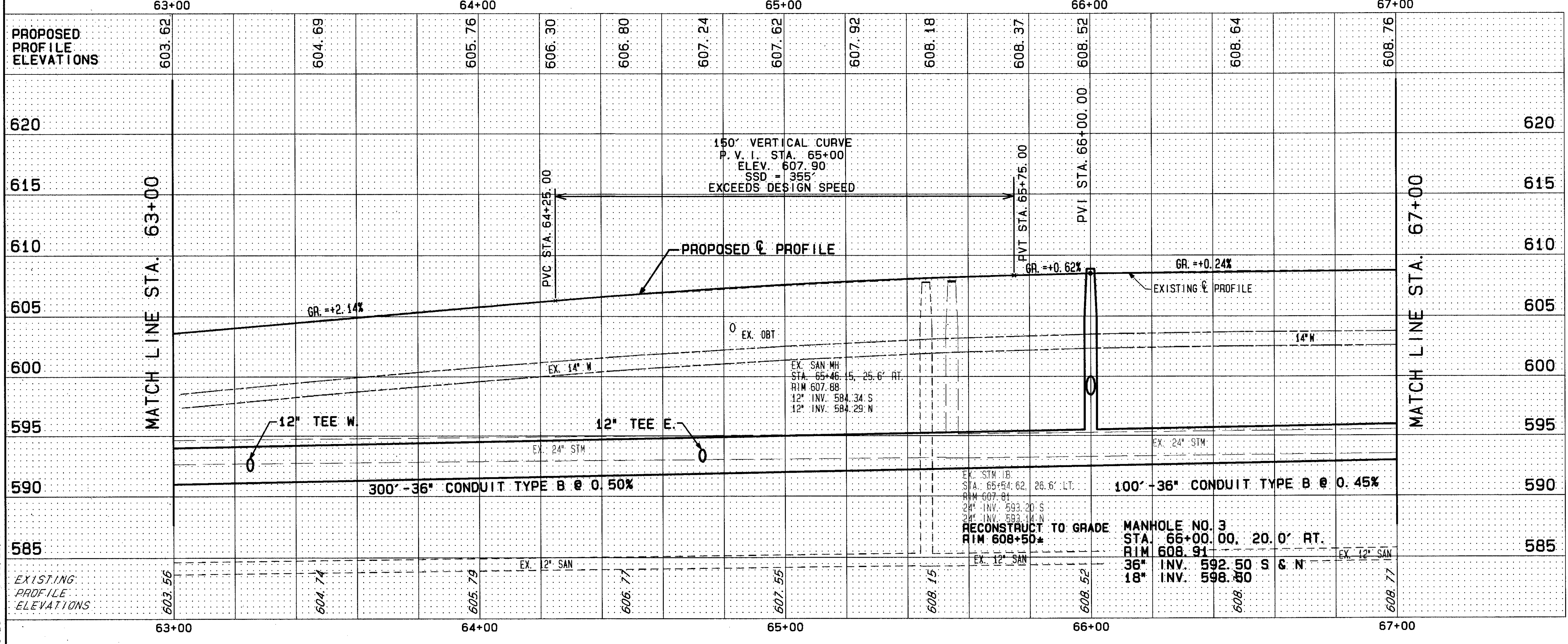


PLAN NO. 211



FOR TYPICAL SECTIONS SEE SHEET 3
 FOR QUANTITY SUB-SUMMARIES SEE SHEET 75 THRU 87
 FOR PAVEMENT MARKING DETAILS SEE SHEET 73 & 74
 FOR CATCH BASIN DETAILS SEE SHEET 69
 FOR DRIVEWAY DETAILS SEE SHEET 68
 FOR PAVEMENT REPAIR DETAILS SEE SHEET 66
 FOR WATERWORK DETAILS SEE SHEET 67
 FOR DRIVE PROFILES SEE SHEET 71 & 72
 FOR STORM SEWER CROSS CONNECTIONS SEE SHEET 31 THRU 34
 FOR CROSS SECTIONS SEE SHEET 31 THRU 35

BENCHMARK EL. 610.90
 TOP HYDRANT IN FRONT
 OF PRESTON TRUCKING



ITEM	DESCRIPTION	QUANTITY	UNIT	AMOUNT
12	CONDUIT, TYPE B	29	32	18
12	CONDUIT, TYPE C	12	20	12
18	CONDUIT, TYPE B	29	18	18
18	CONDUIT, TYPE C	12	18	18
24	CONDUIT, TYPE C	706.02	8	8
36	CONDUIT, TYPE B	706.02	400	11
36	CONDUIT, TYPE C	706.02	400	11
AS PER PLAN	MANHOLE NO. 3	1	1	1
AS PER PLAN	CATCH BASIN NO. 2-2B	1	2	1
AS PER PLAN	CATCH BASIN NO. 2-3	1	1	1
AS PER PLAN	CATCH BASIN RECONSTRUCTED TO GRADE	1	1	1
AS PER PLAN	HYDRANT ADJUSTED TO GRADE	1	1	1
AS PER PLAN	TEE - 36"x12"x36"	2	2	2
TOTALS				67

REF	LOCATION	DRAINAGE, WATER, SANITARY	AMOUNT	
D-1	STA. 63+00.20' RT. TO STA. 67+00.20' RT.	20' RT.	20	
D-2	STA. 63+20.20' LT. TO STA. 63+20.20' RT.	20' RT.	20	
D-3	STA. 64+70.20' RT. TO STA. 64+70.29' RT.	29' RT.	29	
D-4	STA. 65+55.26' LT.	26' LT.	26	
D-5	STA. 66+00.27' LT. TO STA. 66+00.20' RT.	20' RT.	20	
D-6	STA. 65+96.27' LT. TO STA. 66+04.27' LT.	27' LT.	27	
M-1	STA. 66+25.23' LT.	23' LT.	23	
TOTALS				67

REF	LOCATION	ROADWAY	AMOUNT	
R-1	STA. 63+00 TO STA. 63+17. LT.	17' LT.	17	
R-2	STA. 65+54 TO STA. 66+04. LT.	50' LT.	50	
TOTALS				67

90483 THU 01/26/93 04:45 PM JACK FILES: P00TS.PLT PL11.PLT PR11.PLT RM11.PLT