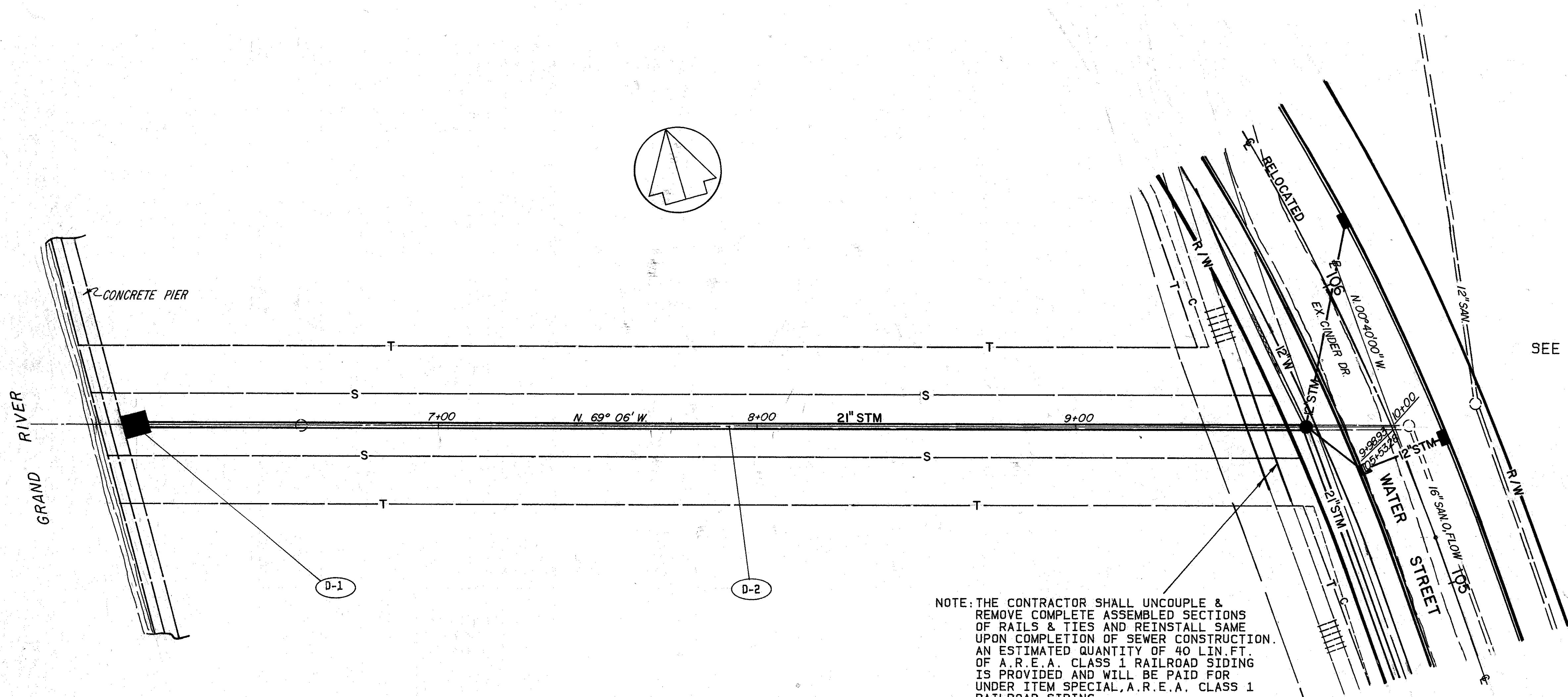


CALC BY: [Signature]  
 DATE: 12-13-04  
 CHKD: K.S.  
 BY: [Signature]  
 DATE: 3/19/04

LAK - 535 - 0.42  
 HIGH STREET / WATER STREET

OHIO  
 FHWA REGION 5

160  
 225



SEE SHEET No. 38

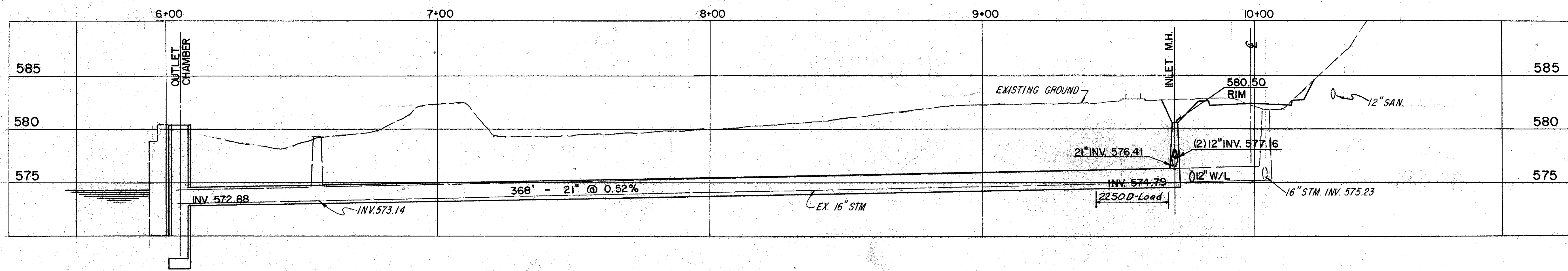
NOTE: THE CONTRACTOR SHALL UNCOUPLE & REMOVE COMPLETE ASSEMBLED SECTIONS OF RAILS & TIES AND REINSTALL SAME UPON COMPLETION OF SEWER CONSTRUCTION. AN ESTIMATED QUANTITY OF 40 LIN. FT. OF A.R.E.A. CLASS 1 RAILROAD SIDING IS PROVIDED AND WILL BE PAID FOR UNDER ITEM SPECIAL, A.R.E.A. CLASS 1 RAILROAD SIDING.

\* 706.02 2250D-Load

SPEC	603		603	
	EA.	LF.	EA.	LF.
D-1	1			
D-2		338	30	
TOTALS	1	338	30	

DRAINAGE

REF	LOCATION	EA.	LF.	L.F.
D-1	B/L 6+03	1		
D-2	B/L 6+03-C/L 105+66.4, 26.5' L.		338	30
TOTALS		1	338	30



STORM SEWER PROFILE STA. 105+66.40

HIGH STREET / WATER STREET