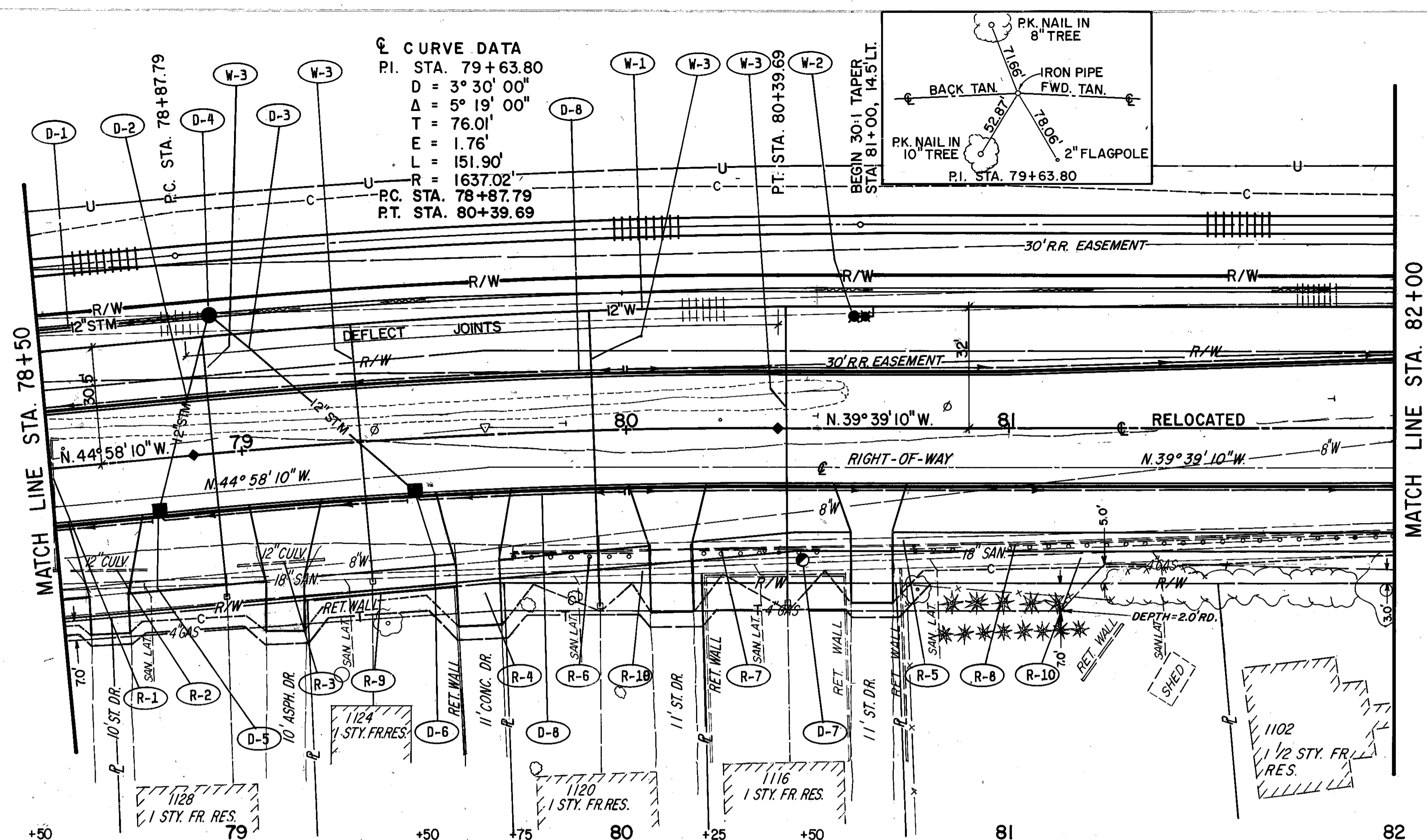
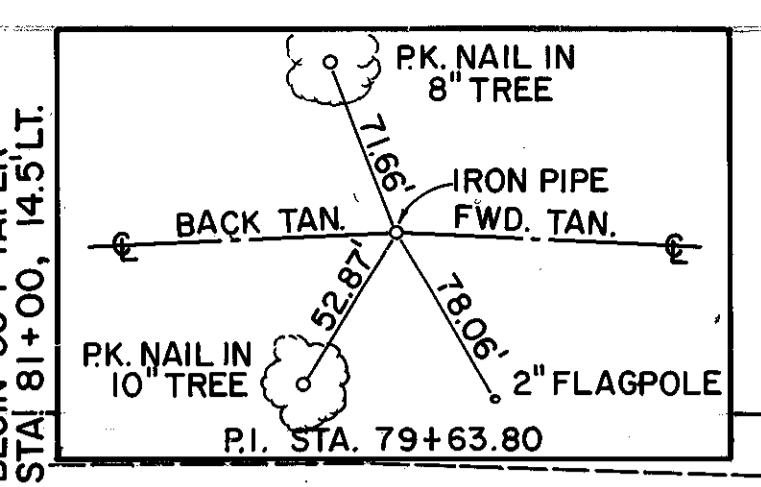


DATE: _____
 BY: _____
 CHECKED: _____
 DATE: _____

DATE: _____
 BY: _____
 CHECKED: _____
 DATE: _____

☺ CURVE DATA
 P.I. STA. 79+63.80
 D = 3° 30' 00"
 Δ = 5° 19' 00"
 T = 76.01'
 E = 1.76'
 L = 151.90'
 R = 1637.02'
 P.C. STA. 78+87.79
 P.T. STA. 80+39.69



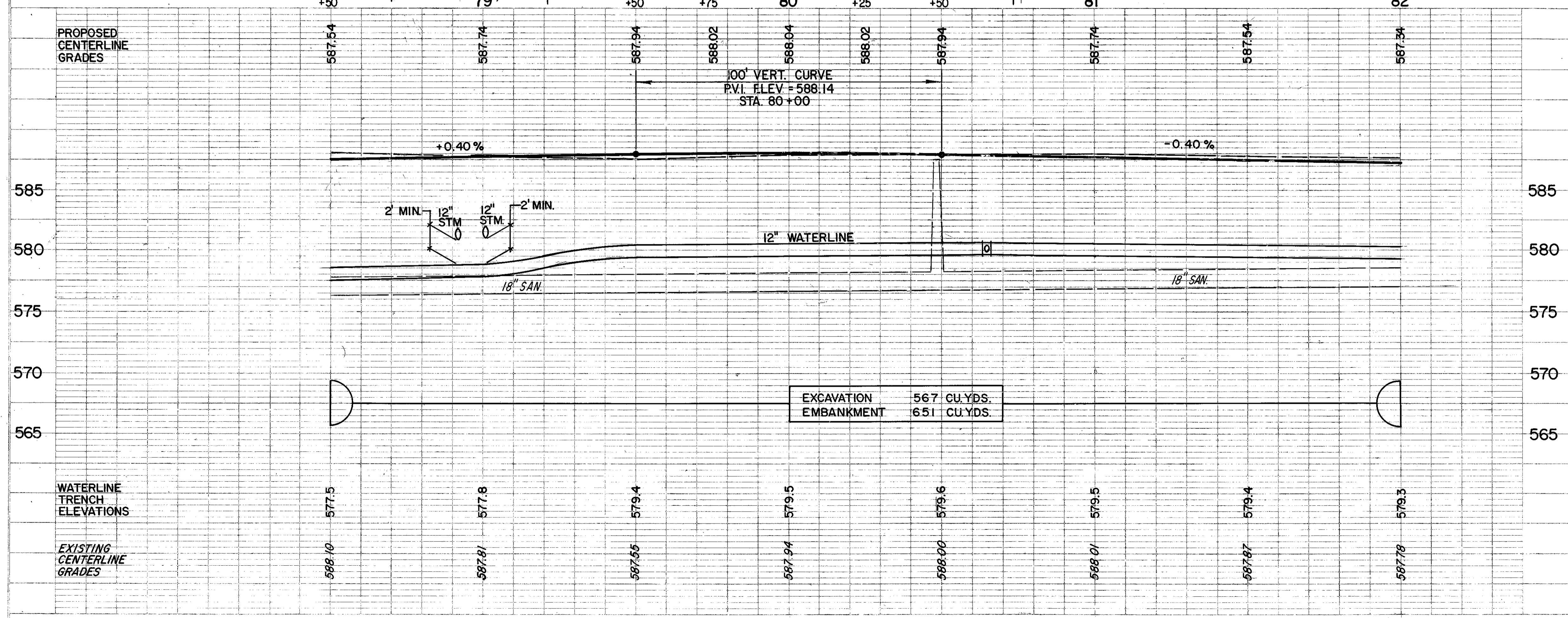
DRAINAGE		603	603	603	604	604	604	605
REF	LOCATION	LF.	EA.	EA.	EA.	EA.	EA.	EA.
D-1	78+50 - 78+95, 36'L.	45						
D-2	78+77, 14'R. - 78+95, 36'L.		57					
D-3	78+95, 36'L. - 79+45, 14'R.		75					
D-4	78+95, 36'L.			1				
D-5	78+77, 14'R.				1			
D-6	79+45, 14'R.					1		
D-7	80+45, 34'R. (SANITARY)						1	
D-8	78+50 - 82+00			20				680
TOTALS		45	132	20	1	2	1	680

REFERENCE DWGS. SH'T NO.
 FOR PAVEMENT CROSS-SECTIONS 70-72
 FOR PAVEMENT, SIGNING & STRIPING PLANS 138, 139
 FOR STORM SEWER & OUTLET PROFILES 151
 FOR STORM CROSS CONNECTION DETAILS 165
 FOR RIGHT-OF-WAY PLANS 205-206
 FOR DRIVEWAY PROFILES 108-110
 FOR DRIVEWAY SUMMARY & CONSTRUCTION DETAILS 132

ROADWAY		202	202	202	202	202	202
REF	LOCATION	LF.	SY.	LF.	LF.	LUMP	SF.
R-1	78+50, 8'L. - 27'R.	35					
R-2	78+53, 27'R. - 78+73, 28'R.	20					
R-3	78+97 - 79+19, 30'R.	22					
R-4	79+53.5 - 79+65, R.		28				
R-5	79+70, 29'R. - 82+00, 24'R.			230			
R-6	79+70, 31'R. - 80+00, 32'R.				30		
R-7	80+20 - 80+50, 32'R.				30		
R-8	80+75, 31'R. - 82+00, 27'R.				125		
R-9	79+16, 40'R. - 79+53, 49'R.					1	
R-10	78+50 - 82+00, R.						1740
TOTALS		77	28	230	185	LUMP	1740

ROADWAY		PIPE REMOVED 24" AND UNDER	PAVEMENT REMOVED	CURB AND GUTTER REMOVED	GUARDRAIL REMOVED FOR STORAGE	RETAINING WALL REMOVED	WALK REMOVED
REF	LOCATION	LF.	SY.	LF.	LF.	LUMP	SF.
R-1	78+50, 8'L. - 27'R.	35					
R-2	78+53, 27'R. - 78+73, 28'R.	20					
R-3	78+97 - 79+19, 30'R.	22					
R-4	79+53.5 - 79+65, R.		28				
R-5	79+70, 29'R. - 82+00, 24'R.			230			
R-6	79+70, 31'R. - 80+00, 32'R.				30		
R-7	80+20 - 80+50, 32'R.				30		
R-8	80+75, 31'R. - 82+00, 27'R.				125		
R-9	79+16, 40'R. - 79+53, 49'R.					1	
R-10	78+50 - 82+00, R.						1740
TOTALS		77	28	230	185	LUMP	1740

WATERWORKS		12" CL. 52 D.I. PIPE AND C.I. FITTINGS	6" HYDRANT ASSEMBLY TYPE B	WATER SERVICE CONNECTIONS
REF	LOCATION	LF.	EA.	EA.
W-1	78+50 - 82+00	350		
W-2	80+65, 32'L.		1	
W-3	78+98, 79+31, 79+92, 80+42			4
TOTALS		350	1	4



EXCAVATION 567 CU. YDS.
 EMBANKMENT 651 CU. YDS.