

CALC. BY: J.E.  
DATE: 2/13/84  
CHKD. BY: K.C.  
DATE: 3/5/84

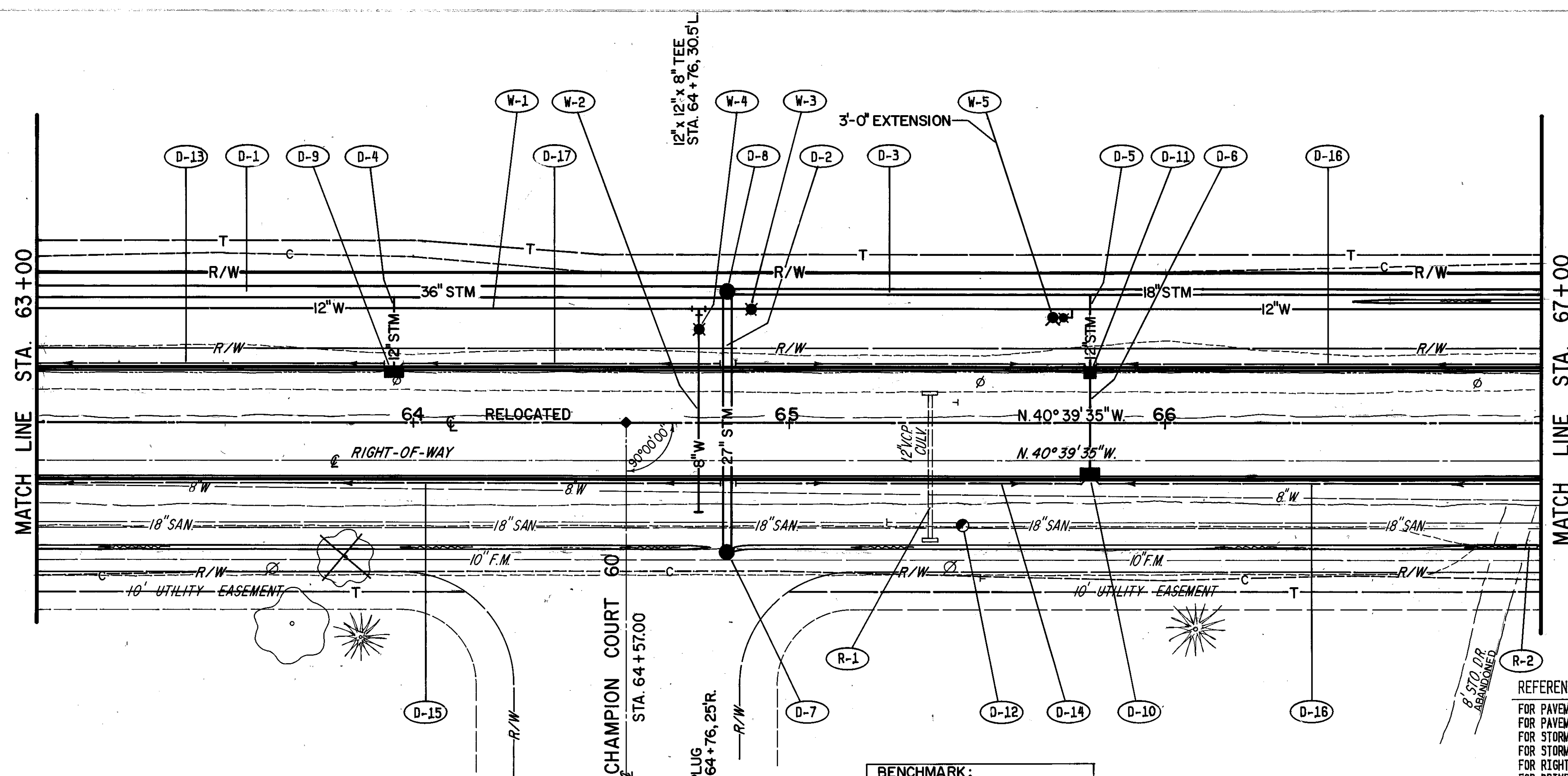
LAK - 535 - 0.42  
HIGH STREET / WATER STREET

OHIO  
FHWA REGION 5

26  
225

PLAN  
DRAWING NO. \_\_\_\_\_  
DATE: \_\_\_\_\_  
BY: \_\_\_\_\_  
NOTE: NOTE BOOK, ALIGNMENT CHECKED, R/W OF WAY CHECKED.

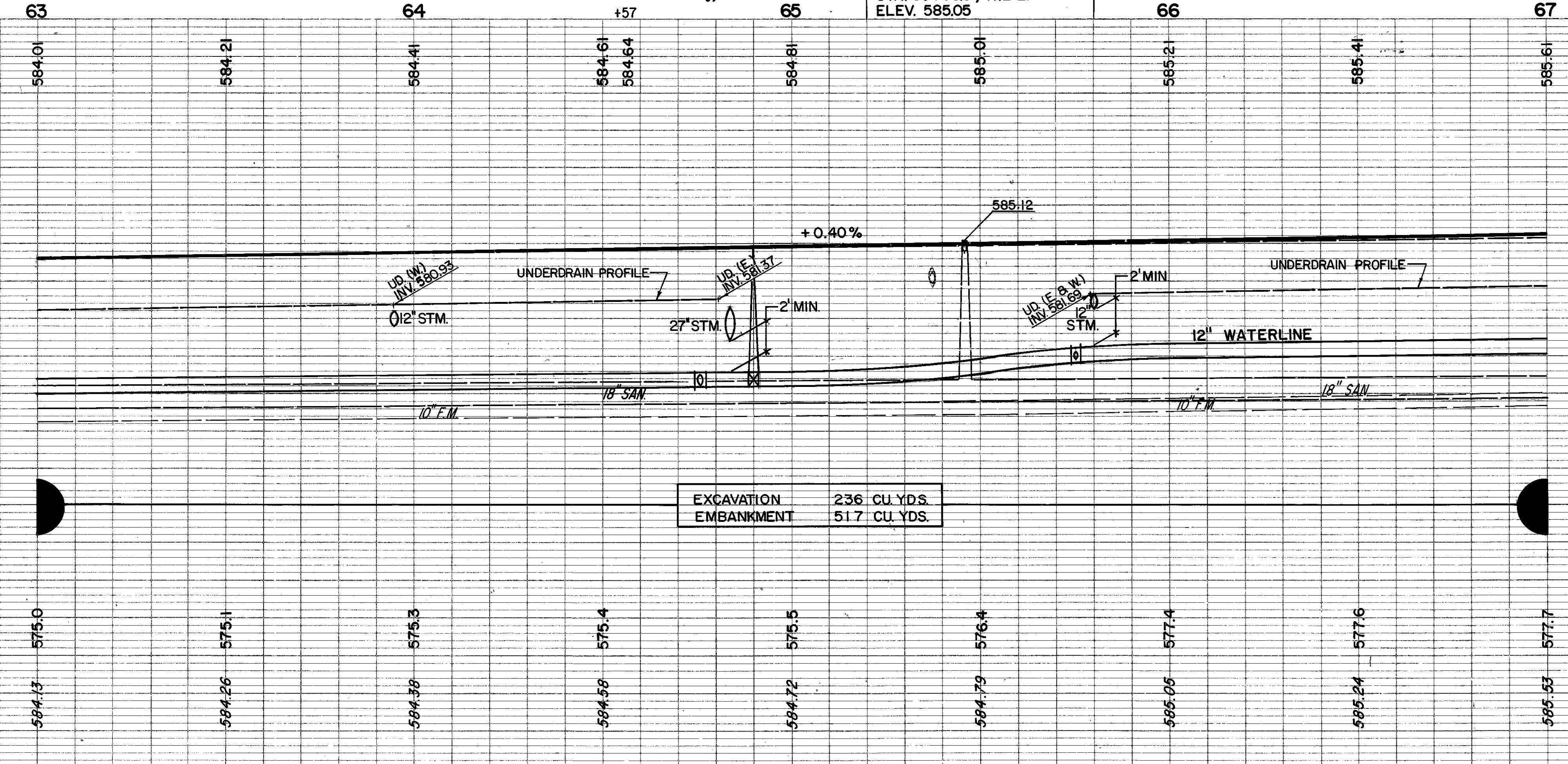
PROFILE  
DRAWING NO. \_\_\_\_\_  
DATE: \_\_\_\_\_  
BY: \_\_\_\_\_  
NOTE: NOTE BOOK, GRADES CHECKED, B.M. & M. NOTES, ELEVATIONS CHECKED.



BENCHMARK:  
P-K IN POLE  
STA. 63+95.5, 11.2'L.  
ELEV. 585.05

REFERENCE DWGS.  
FOR PAVEMENT CROSS-SECTIONS  
FOR PAVEMENT, SIGNING & STRIPING PLANS  
FOR STORM SEWER & OUTLET PROFILES  
FOR STORM CROSS CONNECTION DETAILS  
FOR RIGHT-OF-WAY PLANS  
FOR DRIVEWAY PROFILES  
FOR DRIVEWAY SUMMARY & CONSTRUCTION DETAILS

SH'T NO.  
60-62  
136  
149  
164  
184  
202-203  
106  
132



REF	DESCRIPTION	LF.	EA.	EA.
605	6" UNCLASSIFIED UNDERDRAINS AS PER PL.			
605	6" SHALLOW PIPE UNDERDRAIN AS PER PL.			
604	MANHOLE ADJUSTED TO GRADE			
604	CATCH BASIN STD NO. 5			
604	CATCH BASIN STD NO. 3A MOD AS PER PLAN			
604	CATCH BASIN STD NO. 3 MOD AS PER PLAN			
604	MANHOLE STD NO. 3			
603	6" CONDUIT TYPE F, AS PER PLAN			
603	12" CONDUIT TYPE B, AS PER PLAN			
603	12" CONDUIT TYPE C, AS PER PLAN			
603	18" CONDUIT TYPE C, AS PER PLAN			
603	27" CONDUIT TYPE B, AS PER PLAN			
603	36" CONDUIT TYPE C, AS PER PLAN			
<b>TOTALS</b>		<b>183.5</b>	<b>70</b>	<b>216.5</b>

**DRAINAGE**

REF	LOCATION	LF.	EA.	EA.
D-1	63+00 - 64+83.5, 35'L.			
D-2	64+83.5, 35'L. - 35'R.			
D-3	64+83.5 - 67+00, 35'L.			
D-4	63+95.14'L. - 35'L.			
D-5	65+80.14'L. - 35'L.			
D-6	65+80.14'L. - 14'R.			
D-7	64+83.5, 35'R.			
D-8	64+83.5, 35'L.			
D-9	63+95.14'L.			
D-10	65+80.14'R.			
D-11	65+80.14'L.			
D-12	65+46.27.5R. (SANITARY)			
D-13	63+00 - 63+95.14'L.			
D-14	64+83.5 - 65+80.14'R.			
D-15	63+00 - 64+83.5'R.			
D-16	65+80.14'L. & R.			
D-17	63+95 - 65+80.14'L.			
<b>TOTALS</b>		<b>183.5</b>	<b>70</b>	<b>216.5</b>

**ROADWAY**

REF	LOCATION	LF.	EA.	EA.
R-1	65+38, 8'L. - 32'R.			
R-2	66+83 - 66+99, 33'R.			
<b>TOTALS</b>		<b>56</b>		

**WATERWORKS**

REF	LOCATION	LF.	EA.	EA.
W-1	63+00 - 67+00	400		
W-2	64+76, 30.5'L. - 25'R.		55.5	
W-3	64+90, 30.5'L.			1
W-4	64+76, 25'L.			1
W-5	65+75, 30.5'L.			1
<b>TOTALS</b>		<b>400</b>	<b>55.5</b>	<b>3</b>