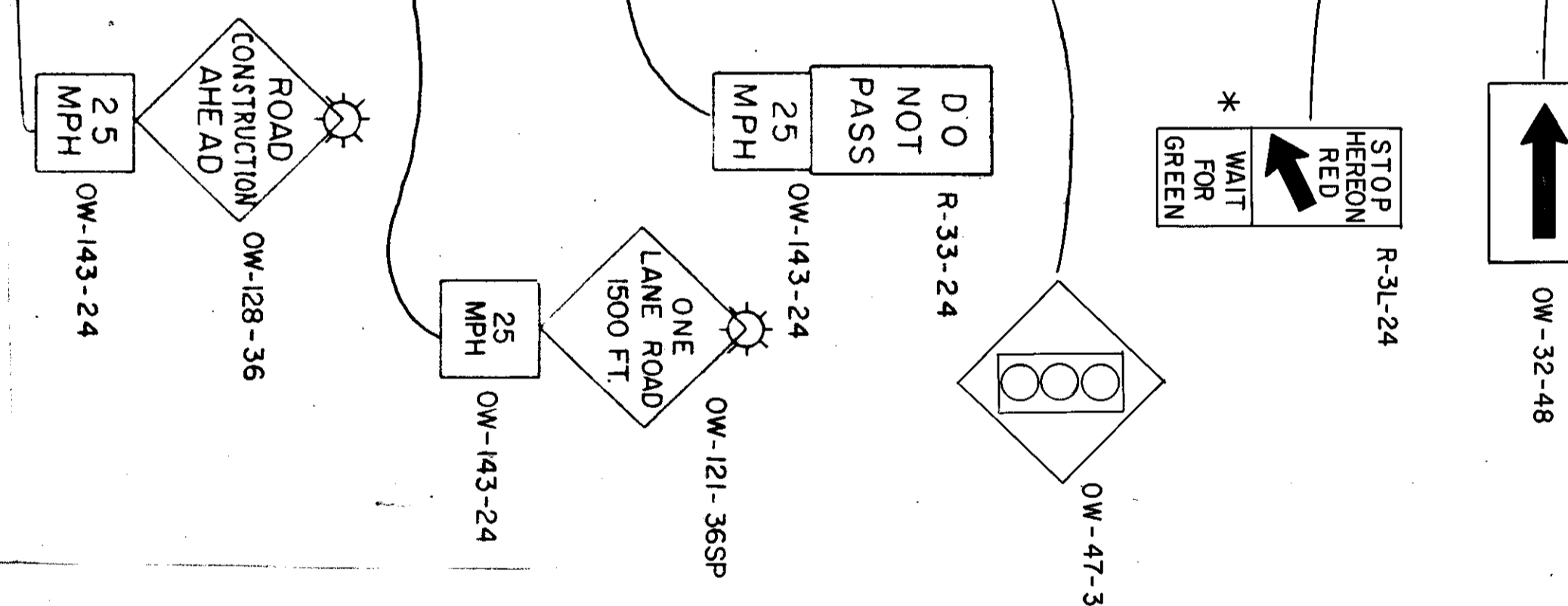
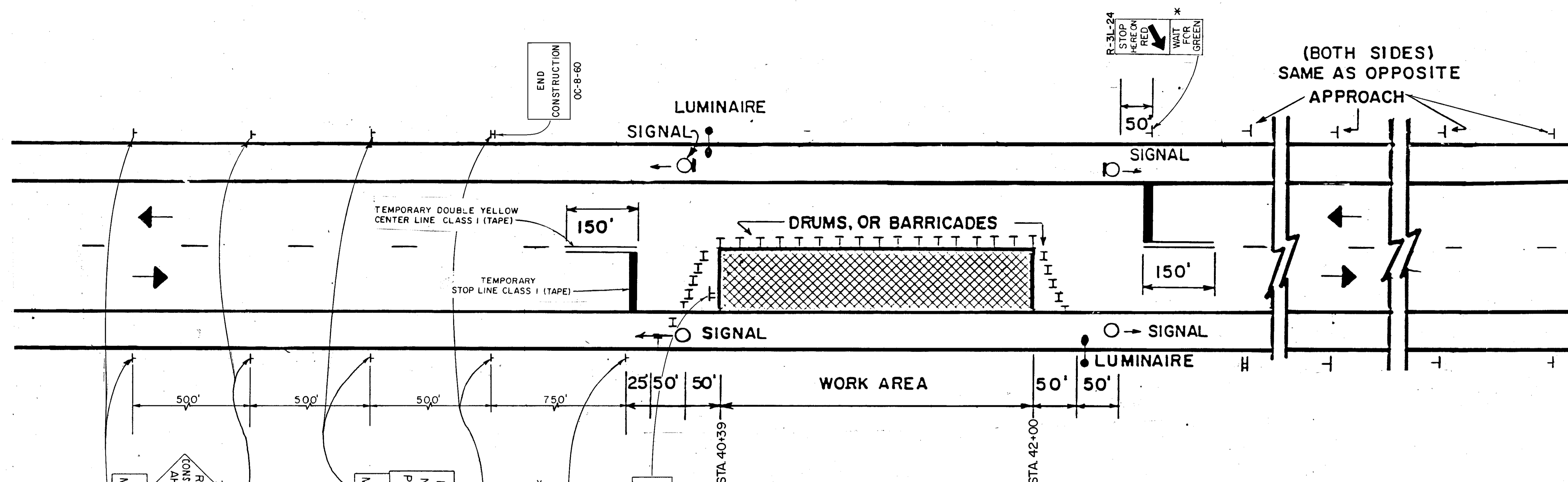


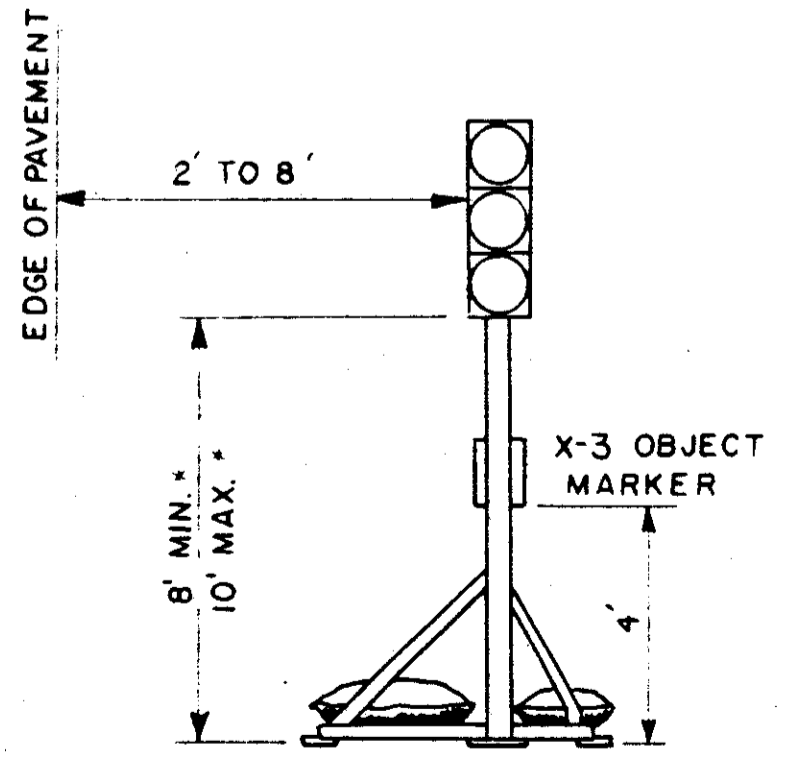
MAINTENANCE OF TRAFFIC



GENERAL NOTES

1. THE MAXIMUM LENGTH OF WORK AREA FOR ONE WAY TRAFFIC SIGNAL CONTROL IS DETERMINED BY THE CAPACITY REQUIRED TO HANDLE THE PEAK HOUR DEMAND. PRACTICAL MAXIMUM LENGTH IS 400 FEET. SIGNAL TIMING SHALL BE APPROVED BY THE ENGINEER.
2. DRUMS OR BARRICADES SHALL BE SPACED 25' CENTER TO CENTER WITHIN THE WORK AREA. DRUMS OR BARRICADES ON THE ADVANCE AND RETURN TAPERS SHALL BE SPACED AT 10' CENTER TO CENTER.
3. THE HORIZONTAL OR VERTICAL ALIGNMENT OF THE ROADWAY MAY REQUIRE ADJUSTMENTS IN THE LOCATION OF THE ADVANCE WARNING SIGNS (THE DISTANCES SHOWN FOR ADVANCE WARNING SIGN SPACINGS ARE MINIMUMS). THE VERTICAL ALIGNMENT OF THE ROADWAY MAY REQUIRE ADJUSTMENTS IN THE HEIGHT OF THE SIGNAL HEADS WITHIN THE RANGE SPECIFIED IN THE TYPICAL POLE SUPPORTED SIGNAL DETAIL.
4. SIGNALS SHALL BE INSTALLED AND OPERATED IN ACCORDANCE WITH THE REQUIREMENTS OF PART 6 OF THE OHIO MANUAL OF UNIFORM TRAFFIC CONTROL DEVICES.
5. ADEQUATE AREA ILLUMINATION TO CLEARLY IDENTIFY BOTH ENDS OF THE WORK AREA AT NIGHT FOR TRAFFIC - OPERATIONS SHALL BE PROVIDED BY USING 150 WATT MINIMUM HIGH PRESSURE SODIUM LUMINAIRES OR 250 WATT MINIMUM MERCURY LUMINAIRES. LUMINAIRES SHALL BE LOCATED ADJACENT TO ONE SIGNAL FOR EACH DIRECTION OF TRAFFIC AS SHOWN ABOVE. THE MOUNTING HEIGHT FOR TEMPORARY LUMINAIRES SHALL BE A MINIMUM OF 27 FEET ABOVE THE PAVEMENT AND THE OVERHEAD CONDUCTOR CLEARANCE SHALL BE 20 FEET ABOVE THE PAVEMENT.
6. TEMPORARY NO PASSING LINES AND STOP LINES SHALL BE INSTALLED. REMOVABLE PAVEMENT MARKINGS MAY BE USED. EXISTING CONFLICTING PAVEMENT MARKINGS BETWEEN THE WORK AREA AND STOP LINE SHALL BE REMOVED. AFTER COMPLETION OF WORK, TEMPORARY MARKINGS SHALL BE REMOVED IN ACCORDANCE WITH 621.134.
7. THE TYPE "A" FLASHING BARRICADE WARNING LIGHTS SHALL BE MOUNTED ON NOTED SIGNS AT ALL TIMES.
8. TYPE C STEADY BURNING BARRICADE WARNING LIGHTS SHALL BE MOUNTED ON ALL DRUMS.
9. CONTRACTOR MUST SUBMIT A SIGNAL PHASING DIAGRAM AND TIMING CHART ONE WEEK PRIOR TO SIGNAL OPERATION FOR APPROVAL BY THE ENGINEER.
10. WHEN SIGNALS ARE NOT IN USE THEY MUST BE REMOVED OR BAGGED.
11. THE CONTRACTOR SHALL BE RESPONSIBLE FOR THE 24-HOUR PER DAY MAINTENANCE OF THE ONE LANE ROAD TRAFFIC SIGNALS. THE CONTRACTOR SHALL CORRECT ALL OUTAGES OR MALFUNCTIONS AS QUICKLY AS POSSIBLE. A DAY AND NIGHT TELEPHONE NUMBER WITH CONTRACTOR'S CONTACT PERSON MUST BE SUPPLIED TO THE LOCAL POLICE AGENCIES AND O.D.O.T.
12. ALL TRAFFIC SIGNAL AND EQUIPMENT USED IN THIS TRAFFIC SIGNAL INSTALLATION SUCH AS SIGNAL CABLE AND SIGNAL HEADS SHALL BE IN CONFORMANCE WITH SPECIFICATION 632. THE CONTROLLER, FLASHERS, LOAD SWITCHES, CONFLICT MONITOR AND OTHER CONTROLLER ACCESSORIES SHALL COMPLY WITH SUPPLEMENTAL SPECIFICATION 861. CONFLICT MONITORS SHALL BE FURNISHED AT ALL LOCATIONS.
13. ALL COST ASSOCIATED WITH THE INSTALLATION, ERECTION, MAINTENANCE, RELOCATION AND SUBSEQUENT REMOVAL OF ALL LIGHTS, SIGNS, BARRICADES, TEMPORARY PAVEMENT MARKINGS, TRAFFIC SIGNALS AND TRAFFIC ENGINEERING SERVICES FOR PREPARATION OF SIGNS PHASING DIAGRAMS AND TIMING CHARTS AS SHOWN OR CALLED FOR HEREON SHALL BE INCLUDED IN THE LUMP SUM BID FOR ITEM 614, MAINTENANCE OF TRAFFIC.

* SUPPLEMENTARY INFORMATION SIGN TO BE PLACED BENEATH THE R-3L-24. SIGN WILL BE REFLECTORIZED WITH A WHITE BACKGROUND AND BLACK LEGEND. SIGN SIZE WILL BE 24" x 24".



TYPICAL POLE SUPPORTED SIGNAL

* ABOVE GRADE OF ROADWAY CENTERLINE