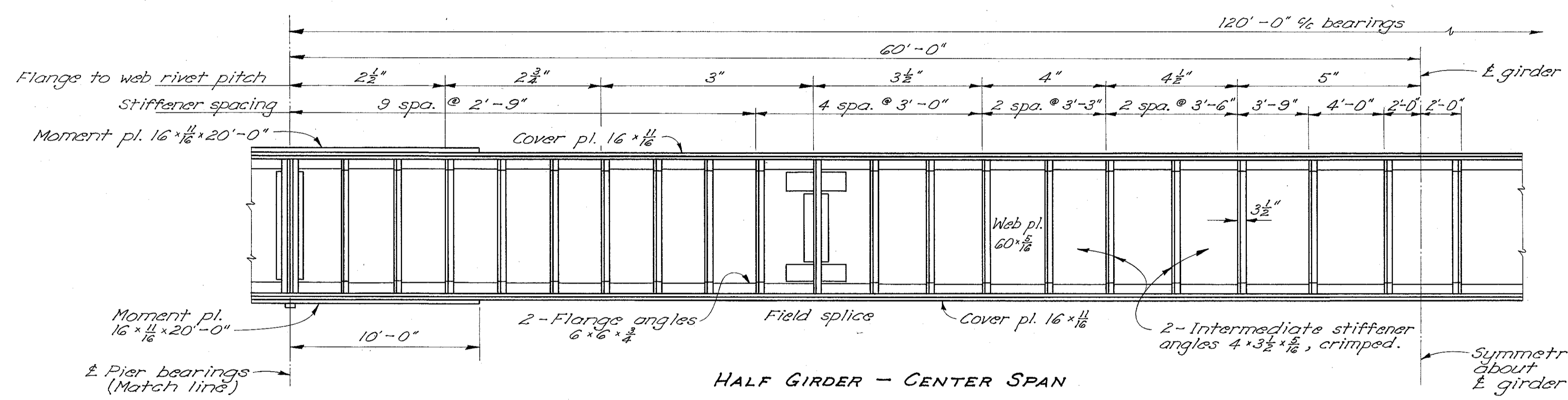


Countersink heads of rivets where sole plates contact flange plate and on top side of bottom flange where end crossframe struts seat.

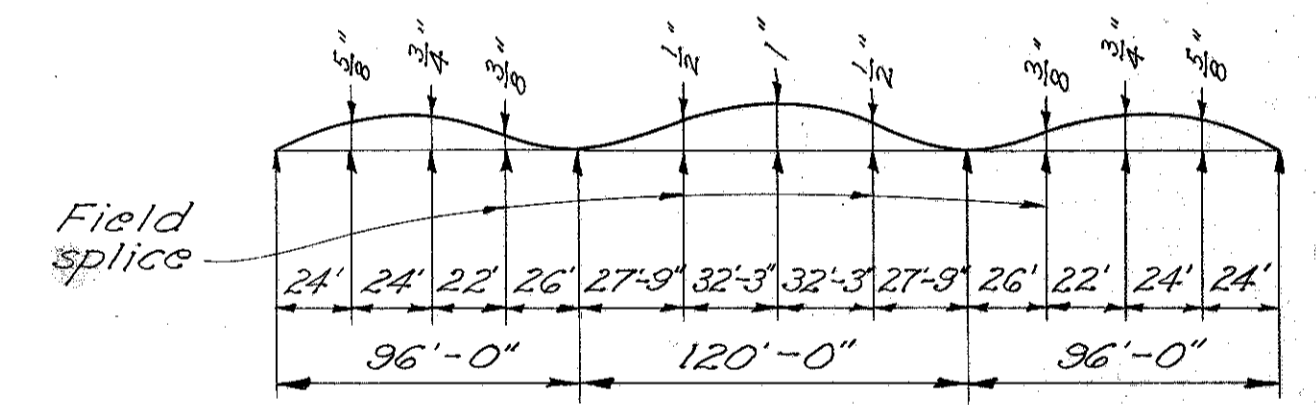
END SPAN GIRDER



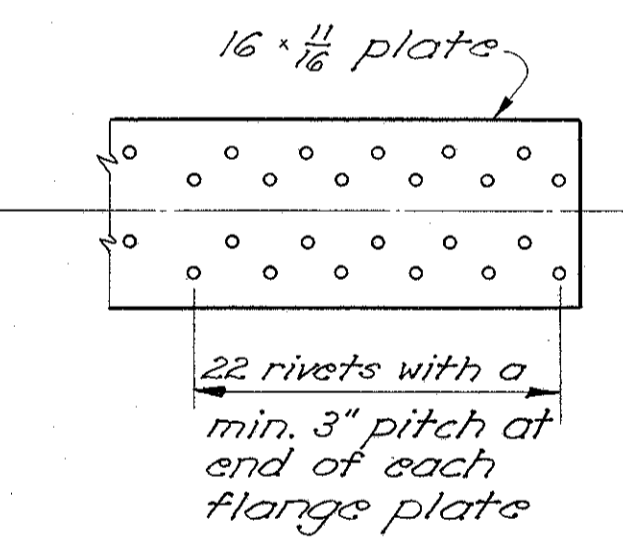
Symmetrical about center line

HALF GIRDER - CENTER SPAN

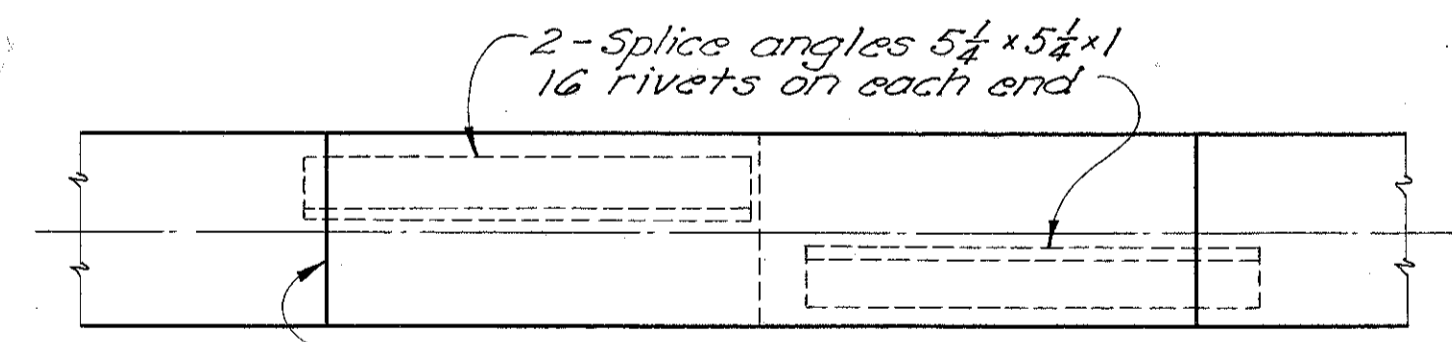
DEFLECTION & CAMBER			
Span	Def. due to weight of steel	Def. due to remaining dead load	Required shop camber
End	1/8"	5/8"	3/4"
Middle	3/16"	3/4"	1"



CAMBER DIAGRAM

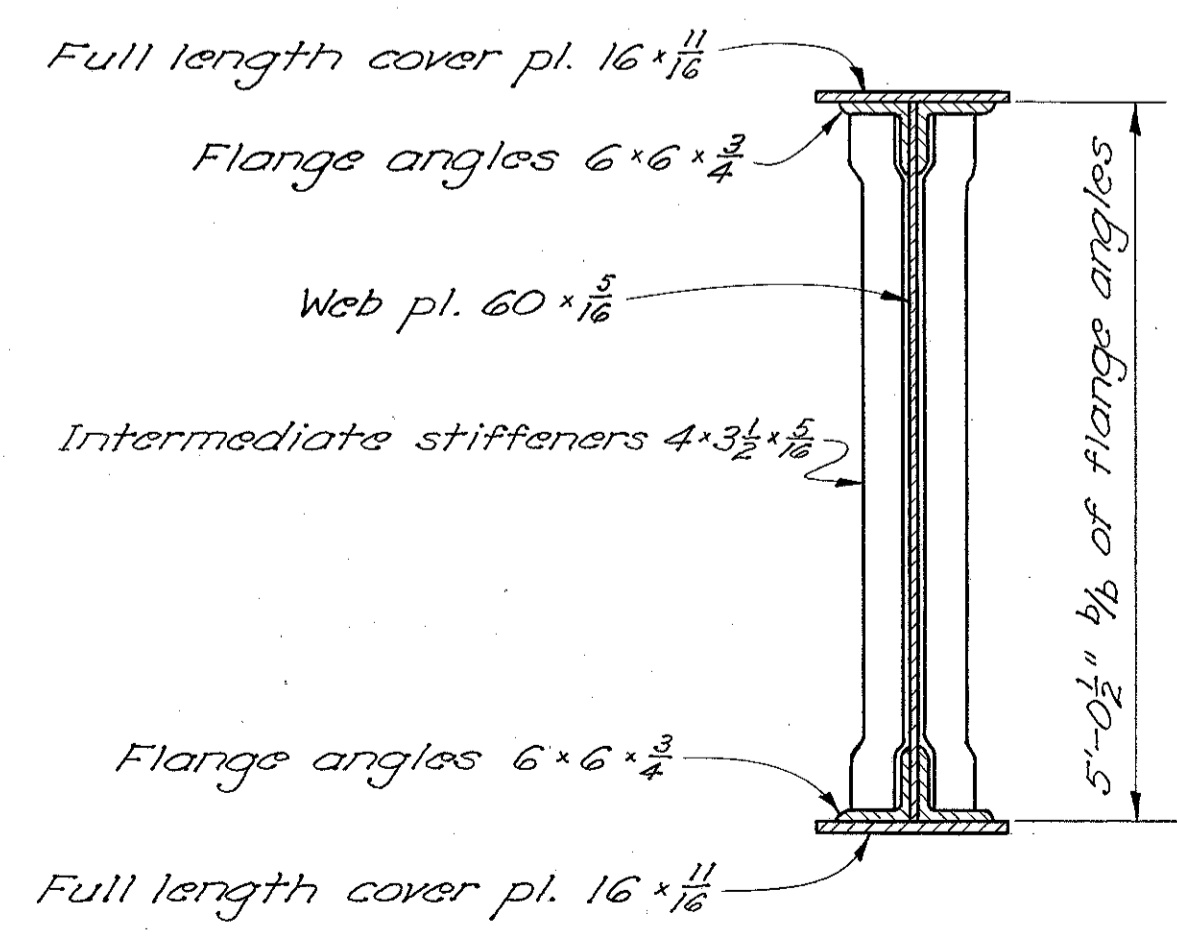


END OF FLANGE PLATE

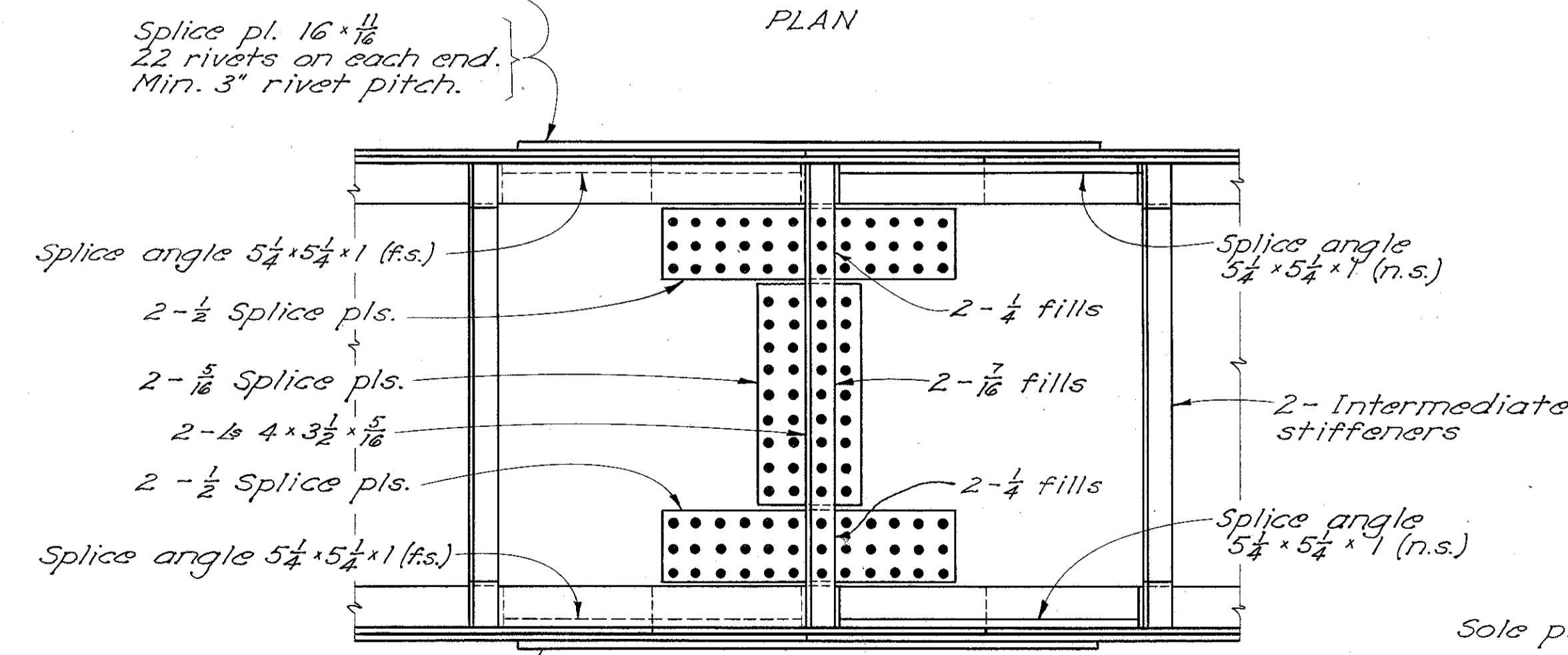


PLAN

RIVETS shall be 7/8 dia.



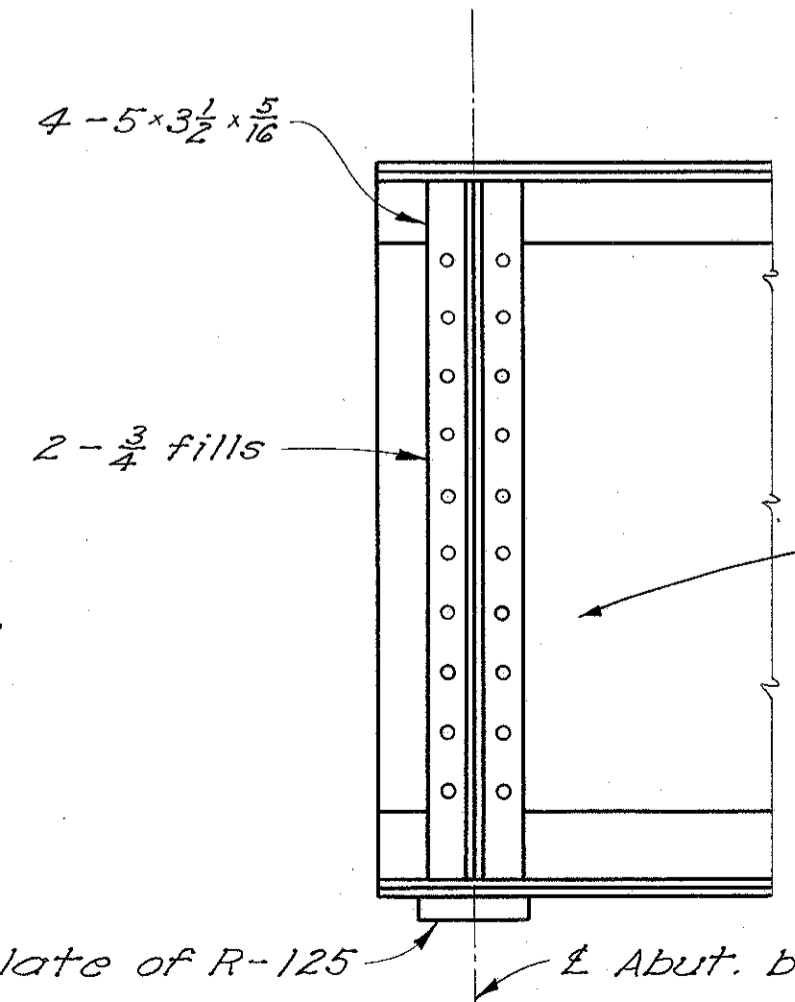
TYPICAL GIRDER SECTION



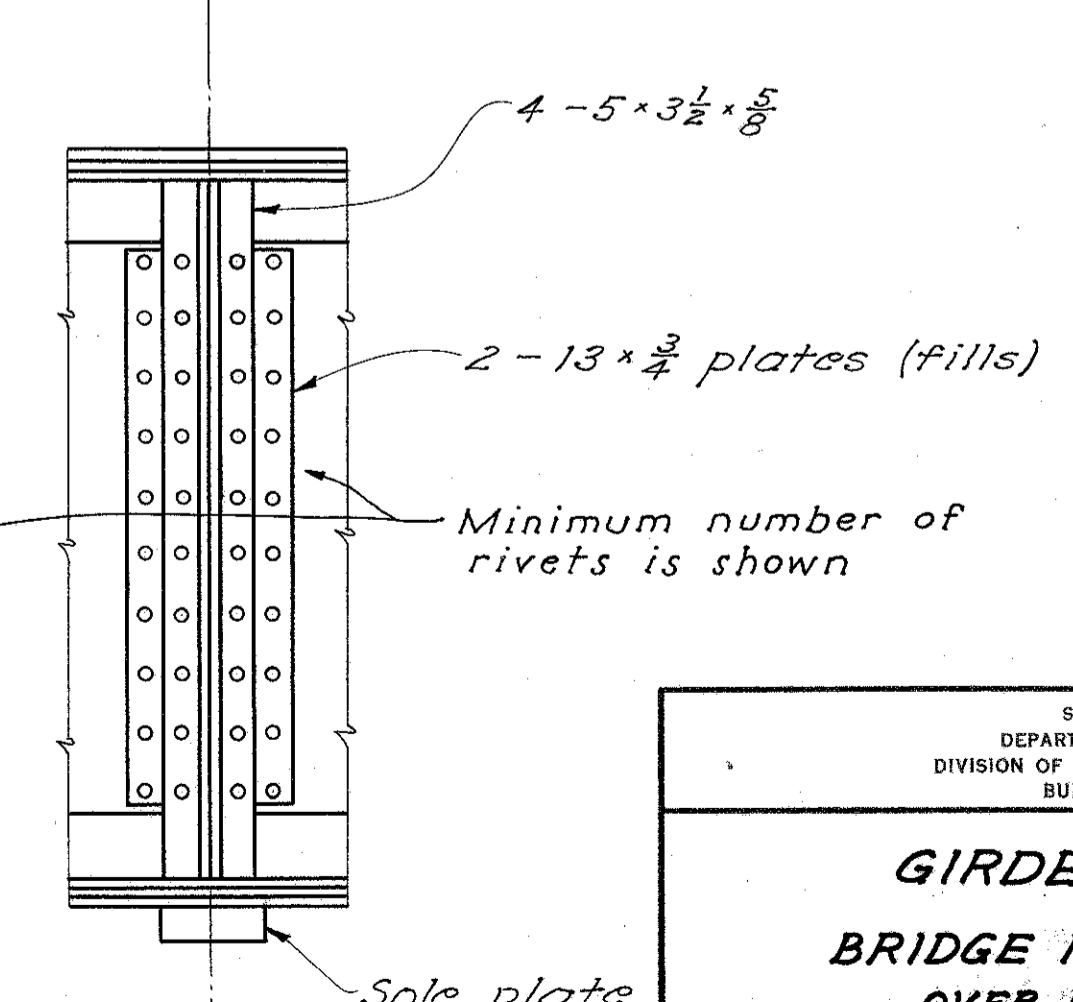
ELEVATION

Splice pl. 16x11/16
22 rivets on each end.
Min. 3" rivet pitch.

FIELD SPLICE DETAILS



ABUTMENT BEARING STIFFENERS



PIER BEARING STIFFENERS

STATE OF OHIO
DEPARTMENT OF HIGHWAYS
DIVISION OF DESIGN AND CONSTRUCTION
BUREAU OF BRIDGES

GIRDER DETAILS
BRIDGE No. LA-535-04
OVER GRAND RIVER
Lake County, Ohio Sta. 37+28.72 to 40+45.28

DESIGNED	DRAWN	TRACED	CHECKED	REVIEWED	DATE	REVISED
R.G.	R.G.	JVP	R.G.	BFG	2-24-55	