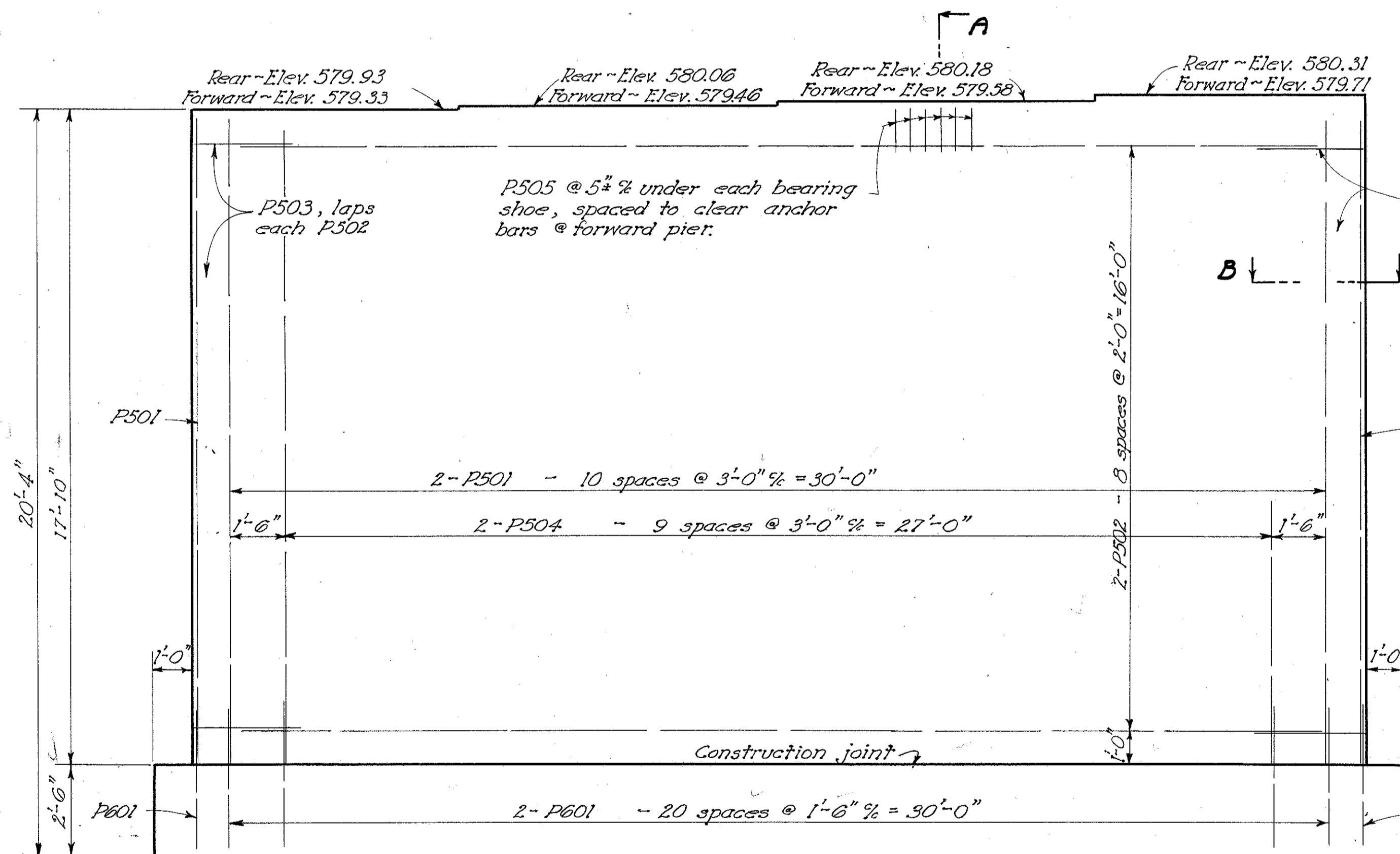
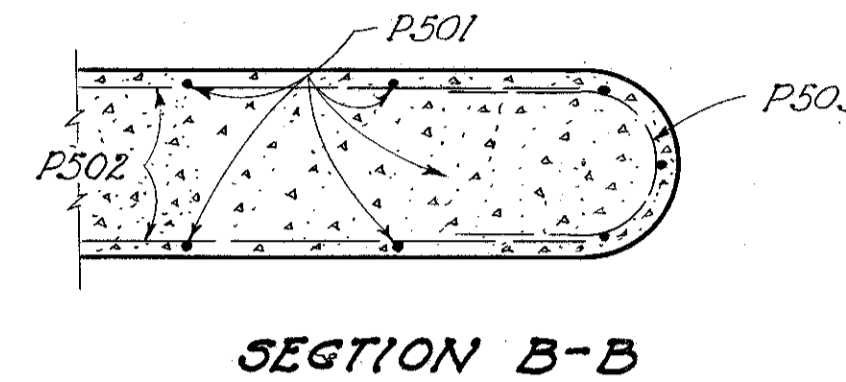


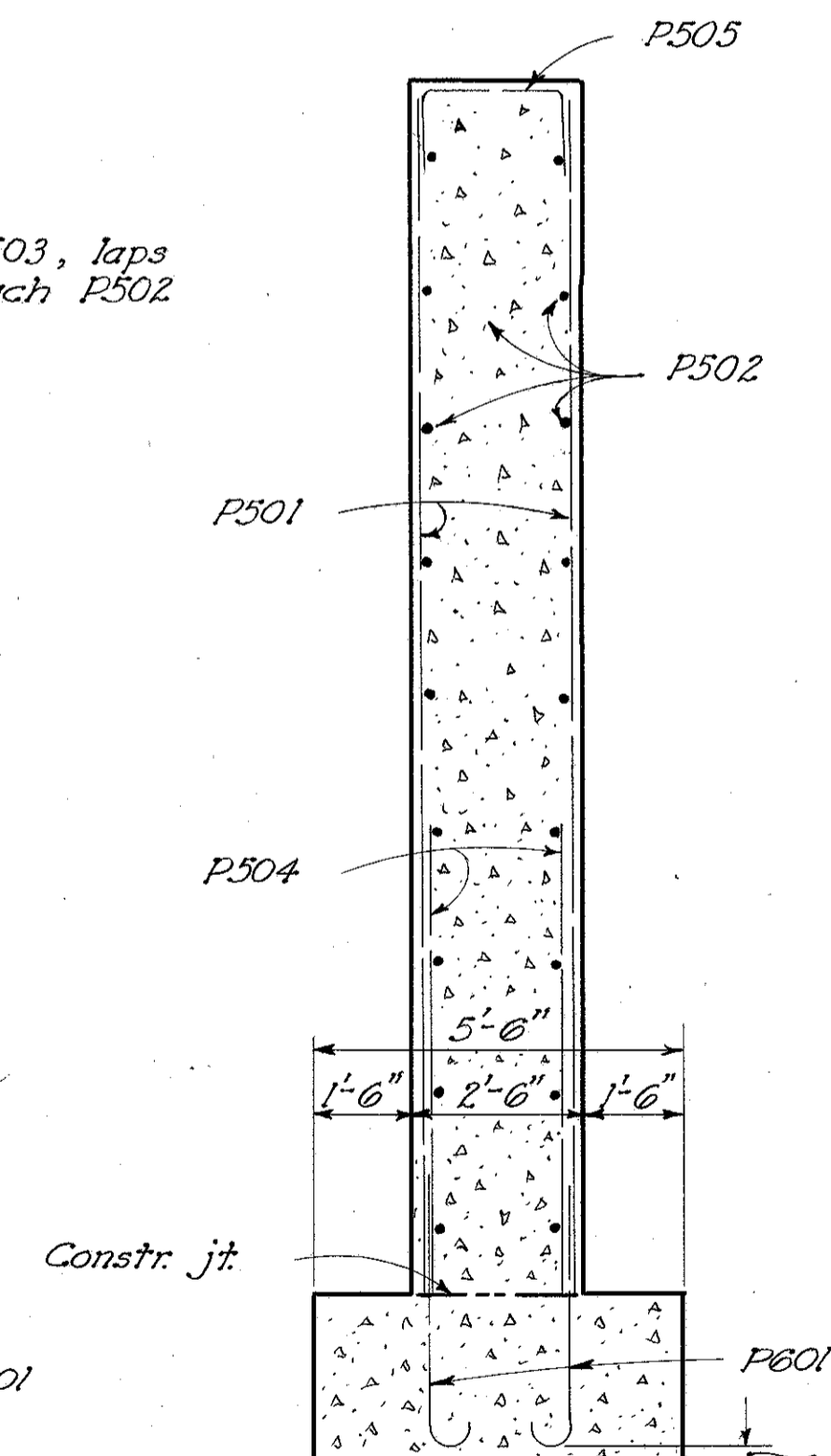
~ PLAN ~



~ ELEVATION ~



SECTION B-B



SECTION A-A

THE CLEARANCE from the face of the concrete to the reinforcing shall be 2" unless otherwise shown.

CONCRETE shall be Class "E".

SUPERSTRUCTURE				FED. RD. DIVISION	STATE	PROJECT	20 24
Mark	No.	Length	Weight	2	OHIO	LAK-535-(0.20-0.53)	
S701	41	32'-0"	26883 S				
S702	2	27'-9"	113 S				
S703	2	23'-6"	96 S				
S704	2	19'-3"	79 S				
S705	2	15'-0"	61 S				
S706	2	10'-9"	44 S				
S707	4	6'-6"	53 S				
S601	411	32'-0"	19,754 S				
S602	2	27'-9"	83 S				
S603	2	23'-6"	71 S				
S604	2	19'-3"	58 S				
S605	2	15'-0"	45 S				
S606	2	10'-9"	32 S				
S607	4	6'-6"	39 S				
S608	72	36'-6"	3947 S				
S501	603	36'-3"	22,799 S				
S502	64	40'-0"	2670 S				
S401	420	1'-9"	490 S				
S402	840	2'-5"	13,56 B				

RAILING STEEL			
R501	8	8'-10"	* B
R502	8	5'-9"	* B
R503	24	6'-0"	* B

* Railing steel included in 5-14 for payment.

ABUTMENTS				PIERS			
No.	Mark	Length	Weight	Mark	No.	Length	Weight
8	A501	8	38'-9" 822 S	P601	88	4'-10"	639 B
6	A502	6	28'-9" 461 S	P501	48	17'-7"	880 S
16	A503	16	13'-5" 573 S	P502	36	29'-6"	1108 S
16	A504	16	5'-10" 249 B	P503	36	6'-6"	244 B
3	A701	3	10'-6" 64 S	P504	40	7'-0"	292 S
32	A601	32	4'-11" 236 B	P505	48	4'-5"	221 B
32	A602	32	12'-9" 613 S				
19	A603	36	19'-6" 1054 B				
20	A604	38	7'-6" 428 S				
36	A501	36	8'-11" 335 B				
2	A502	2	38'-6" 80 S				
10	A503	10	28'-3" 295 S				
2	A504	2	25'-0" 52 S				
6	A505	12	8'-0" 100 S				
2	A506	12	9'-6" 119 S				
8	A507	8	12'-0" 100 S				
3	A508	5	11'-3" 59 S				
2	A509	2	7'-10" 16 S				
2	A510	4	10'-8" 44 S				
24	A511	24	8'-4" 209 B				
4	A512	4	5'-4" 22 B				
4	A513	4	7'-4" 31 B				
4	A514	4	9'-4" 39 B				
4	A515	4	11'-4" 47 B				
4	A516	4	13'-4" 56 B				
4	A517	4	15'-4" 64 B				
2	A518	2	7'-6" 16 S				
2	A519	2	15'-2" 32 S				
4	A520	4	24'-0" 100 S				
8	A521	8	25'-8" 214 S				
2	A522	2	11'-8" 24 S				
2	A523	2	10'-6" 22 S				
2	A524	2	9'-0" 19 S				
8	A525	8	34'-6" 288 S				
12	A526	12	9'-1" 114 B				
12	A527	12	8'-9" 110 B				
8	A528	8	8'-7" 72 S				

REPLACEMENT			
RE8	1	6'-6"	17 S
RE7	2	6'-3"	25 S
RE6	2	5'-11"	18 S
RE5	2	5'-7"	12 S
RE4	1	5'-3"	4 S

BAR SIZE is indicated in the bar mark. The first digit indicates the bar size number.

STATE OF OHIO
DEPARTMENT OF HIGHWAYS
DIVISION OF DESIGN AND CONSTRUCTION
BUREAU OF BRIDGES

PIER DETAILS & STEEL LIST
BRIDGE No. LA-535-04
OVER GRAND RIVER
LAKE Co. STA. 37+28.72
40+45.28

DESIGNED	DRAWN	TRACED	CHECKED	REVIEWED	DATE	REVISED
RG	RG	PG	Ray	BFG	2-24-55	