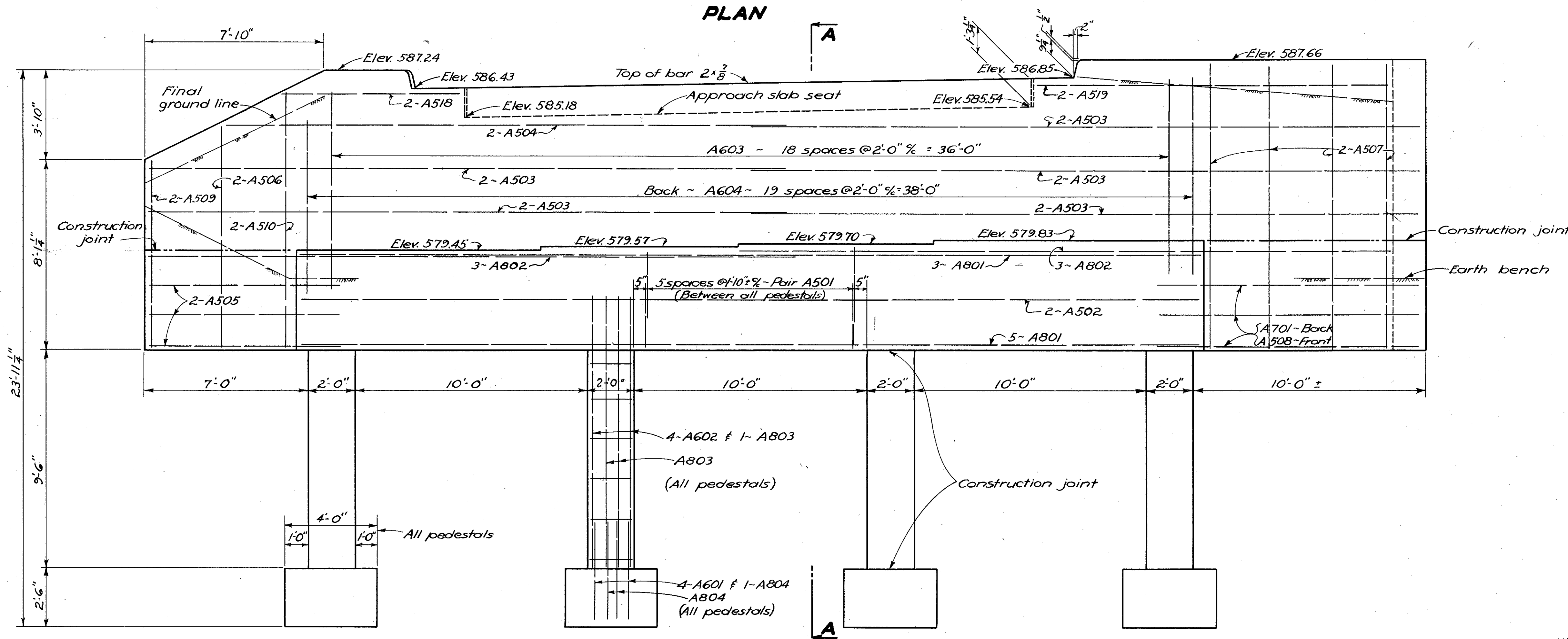
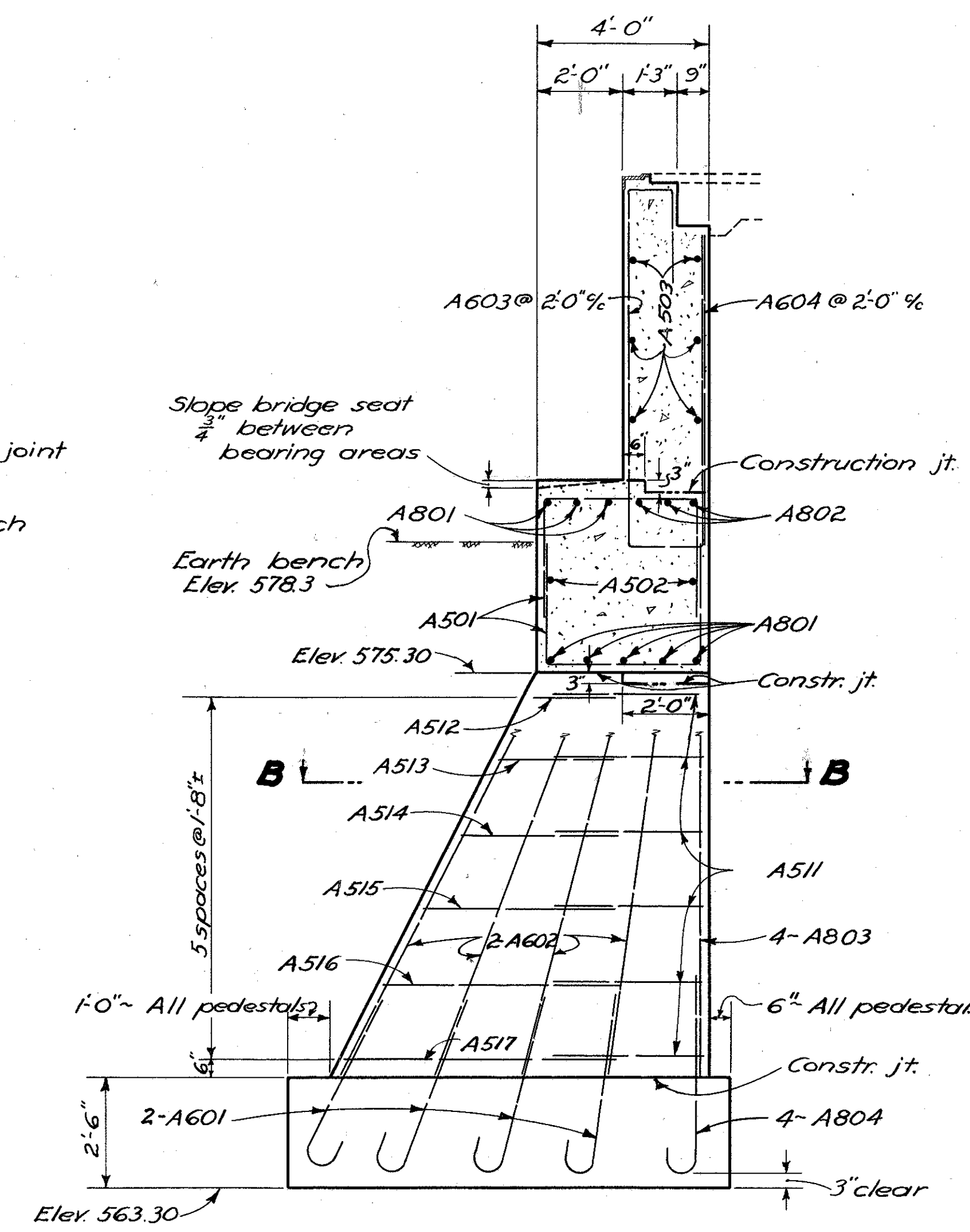


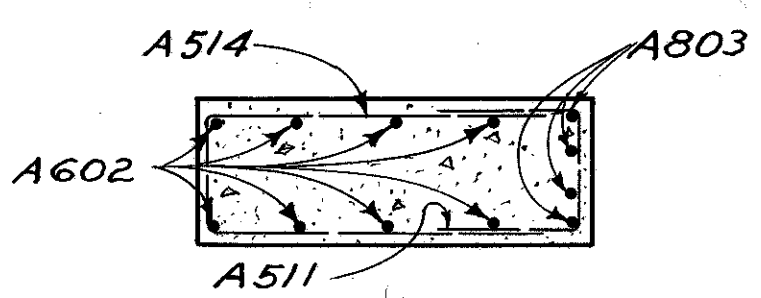
**PLAN**



**ELEVATION**



**SECTION A-A**  
(Typical for all pedestals)



**SECTION B-B**  
(Typical for all pedestals)

**NOTES**

THE CLEARANCE from the face of the concrete to the reinforcing steel shall be 2" unless otherwise shown.

PEDESTAL ABUTMENTS: After the pedestals are placed all earth fill shall be made full height of earth bench and the excavation made for the crossbeam. If bottom forms for the crossbeam are used, they shall be left in place.

BRIDGE SEAT PROCEDURE: Concrete above the bridge seat construction joint shall not be placed until after steel work is erected. Steel end finish shall be used as a template for top of backwall.

CONCRETE shall be Class "E."

STATE OF OHIO DEPARTMENT OF HIGHWAYS DIVISION OF DESIGN AND CONSTRUCTION BUREAU OF BRIDGES					
<b>FORWARD ABUTMENT DETAILS</b>					
<b>BRIDGE NO. LA-535-04</b>					
<b>OVER GRAND RIVER</b>					
LAKE CO. STA. { 37+28.72 40+45.28					
DESIGNED	DRAWN	TRACED	CHECKED	REVIEWED	DATE
R.G.	R.G.	GOG	Roy	R.G.	2-24-55