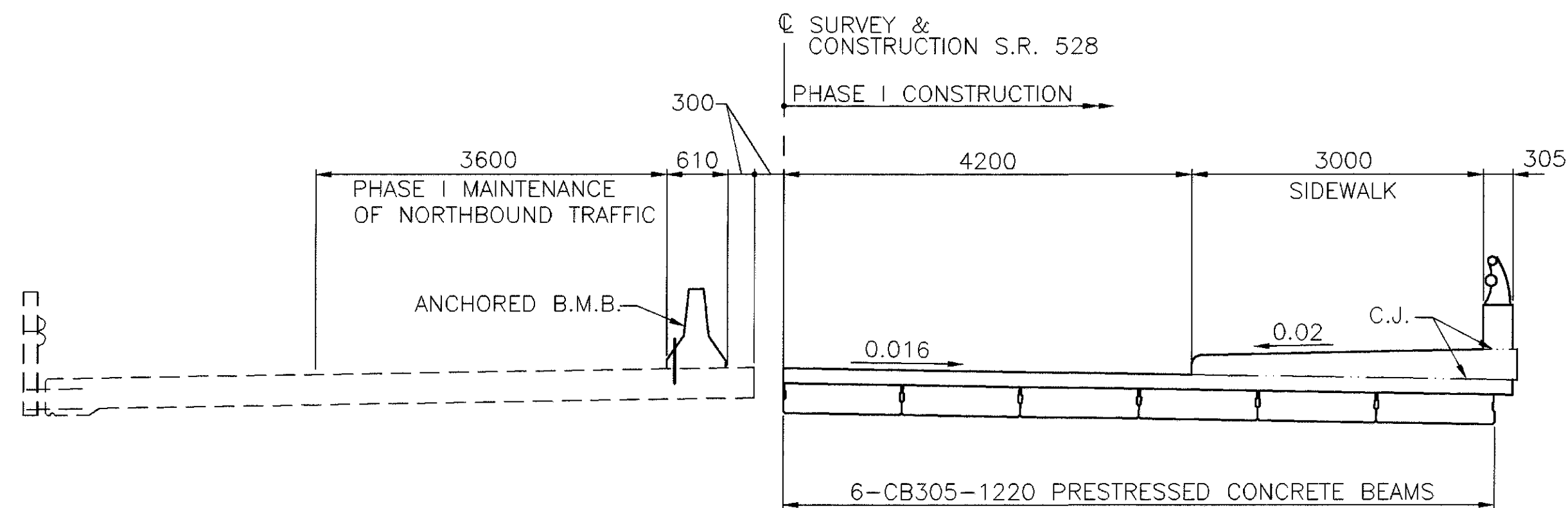
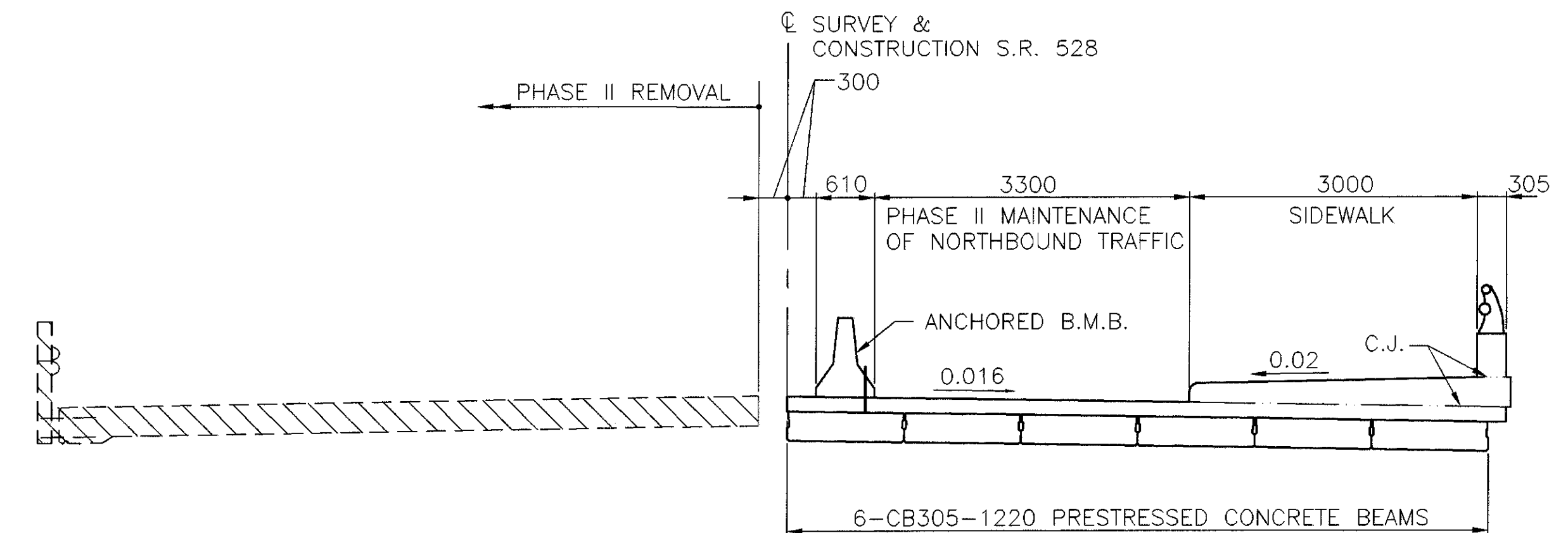


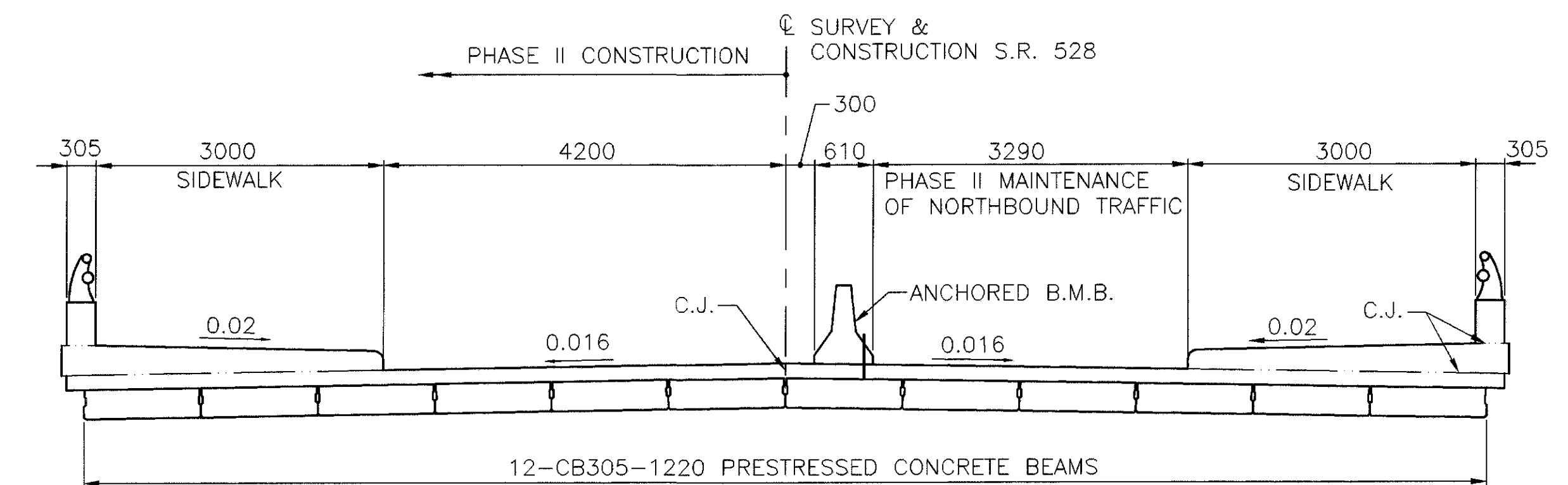
PHASE I REMOVAL



PHASE I CONSTRUCTION



PHASE II REMOVAL



PHASE II CONSTRUCTION

SEQUENCE OF CONSTRUCTION

- PHASE I REMOVAL** SHALL COMPRISE THE REMOVAL OF THE PORTION OF THE DECK ON THE RIGHT HAND SIDE OF THE SAW CUT, INCLUDING SIDEWALK, RAILING, AND PORTIONS OF THE ABUTMENT (TRAFFIC IS MAINTAINED ON THE LEFT SIDE).
- PHASE I CONSTRUCTION** SHALL BE THE CONSTRUCTION OF THE REPLACEMENTS DESCRIBED IN PHASE I REMOVAL. UPON THE COMPLETION OF PHASE I CONSTRUCTION, B.M.B. SHALL BE INSTALLED TO MAINTAIN PHASE II TRAFFIC ON THE CONSTRUCTED DECK.
- PHASE II REMOVAL**: SHALL COMPRISE THE REMAINING PART OF THE BRIDGE DECK SLAB AND PORTIONS OF THE ABUTMENTS ON THE LEFT HAND SIDE OF THE SAW CUT.
- PHASE II CONSTRUCTION**: WILL INCLUDE THE REPLACEMENT OF ELEMENTS REMOVED IN PHASE II REMOVAL.

NOTE:

- ALL DIMENSIONS ARE GIVEN IN MILLIMETERS AND ALL STATIONS AND ELEVATIONS ARE GIVEN IN METERS UNLESS OTHERWISE INDICATED.

LEGEND:

- TYP. TYPICAL
- B.M.B. PORTABLE CONCRETE BARRIER, BRIDGE MOUNTED
- C.J. CONSTRUCTION JOINT