

FED. RD. DIST. NO.	STATE	PROJECT	FISCAL YEAR
10	OHIO		1944

2  
5

LAKE COUNTY  
S.H. 327 SEC. MADISON  
(PT) & F

# TYPICAL SECTION

TYPE T-35

Scale 3/8" = 1'

## GENERAL NOTES

### TRAFFIC

See Sheet No. 5.

### PROFILE

The profile of the proposed surface course shall be approximately 2 inches above that of the existing pavement.

### COMPACTION OF SUBGRADE

Loosening and watering of subgrade in cuts according to Section E-1.11 will not be required if density requirements can be met by additional rolling. However, if at any time the subgrade contains an excess of moisture as indicated by distortion under the roller, the subgrade shall be aerated by discing or other suitable means until the moisture content has been reduced sufficiently to permit recompaction to the density required by the specifications.

### PRIME COAT INCLUDING SAND COVER

Bituminous Prime Coat, Section M-5.12 AE-3 shall be applied by distributor or by brooms at the rate of 0.10 gal. per square yard. After the bituminous material has been applied, all material not required to give a uniform coating to the surface shall be swept into all cracks and open joints before the sand cover is placed. Sand cover shall be uniformly spread at a rate of from 2 to 5 pounds per square yard. The sand shall be spread at such time and shall be in such condition that it will adhere to the bituminous material. Payment for sand cover is included in the price bid per gallon for bituminous material.

### FILLING MAJOR DEPRESSIONS

Major depressions in existing pavement shall be filled and compacted with bituminous concrete leveling material in advance of placing the regular leveling course. These depressions shall be filled in layers not to exceed 3 inches in depth when compacted.

### TIME INTERVAL BETWEEN COURSES

In general no leveling course shall remain without being covered by surface course for more than 72 hours except in municipal construction where the time shall be determined by the Engineer on the basis of incidental construction items.

### TREATMENT OF FEATHERED AREA

Where directed the new surface course shall be feathered. The area upon which less than one (1) inch of surface course is to be placed shall be considered as the area to be feathered. A paint coat of the same bituminous material used in the mix shall be applied to this area before placing the bituminous concrete surface course. The cost of such operation and material shall be included in the unit price bid for bituminous concrete.

### RAILROAD CROSSING

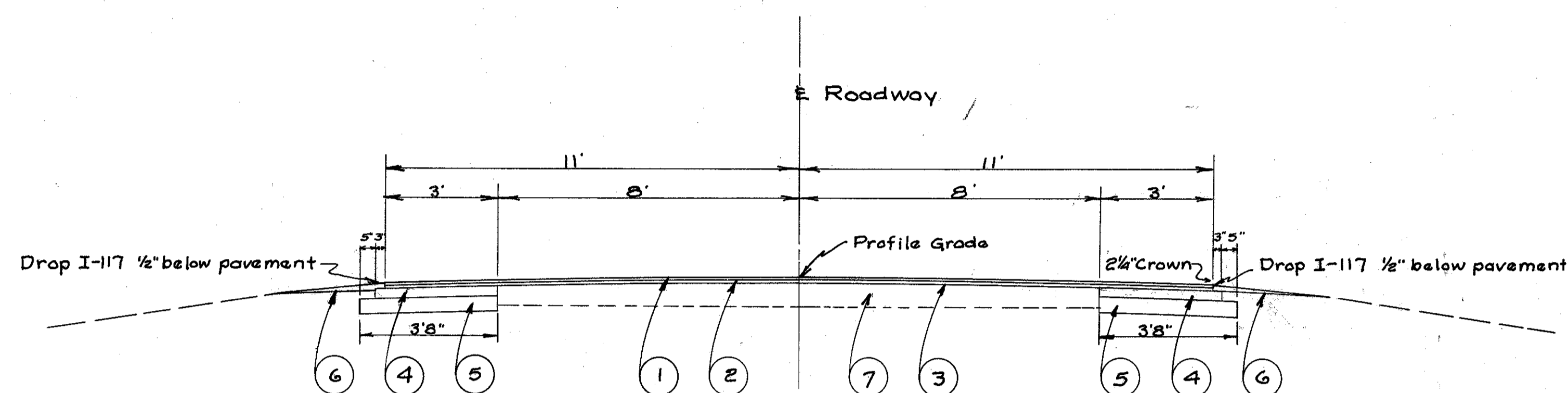
The new surface course shall be feathered to meet the rail grades if necessary.

### EARTHWORK

Contractor shall dispose of Item E-1, Excavation, outside the limits of the project.

### GRANULATED SLAG BASE COURSE

The granulated slag base shall be sprinkled sufficiently to lubricate the particles, then rolled to a compacted course with a trench roller meeting the requirements of G-6.05. Should the subgrade become soft and mixed thru the course, the contractor shall, without additional compensation, remove the material, reshape and compact the subgrade and replace the materials removed, with clean aggregate which shall be rolled until compacted satisfactorily and uniformly with the surrounding surface. The finished surface shall conform to the



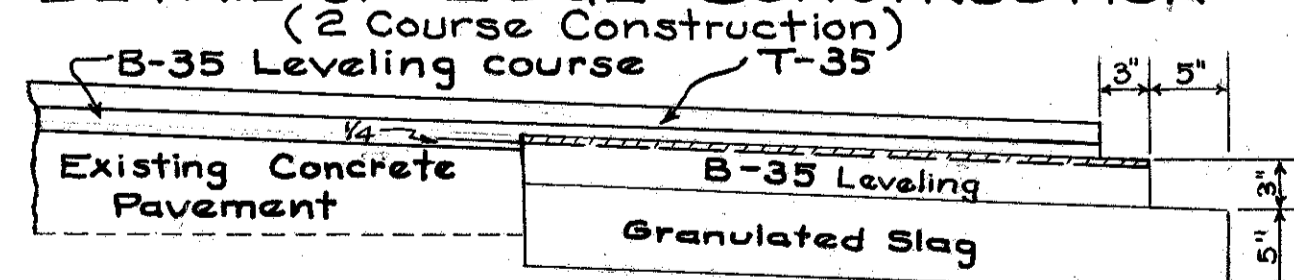
- ① T-35 1" Asphaltic Concrete Surface Course Type B
- ② B-35 1" Minimum Asphaltic Concrete Leveling Course
- ③ T-30 Bituminous Prime Coat Sec. M-5.12 AE-3
- ④ B-35 3" Asphaltic Concrete Leveling Course
- ⑤ Special 5" Granulated (Grade B) Slag Base Course
- ⑥ I-117 Berm Material
- ⑦ Existing 6"-7"-6" Concrete Pavement

STA. 0+32.0 TO STA. 112+95.0

### GENERAL NOTES (continued)

requirements set forth in the last sentence of Section B-20.06. The yardage to be paid for shall be the number of square yards of granulated slag base as specified, in place, compacted, completed and accepted.

### DETAIL OF EDGE CONSTRUCTION



Note: Where the 3 inch leveling course in the widened area would finish more than 1/4 inch above the edge of the existing pavement that portion below the dashed line shall be placed and compacted in a separate operation. The hatched portion above the dashed line shall be placed simultaneously with the full width leveling course.

### Note:

Edge Detail - If compaction of the granulated slag and asphaltic concrete widening courses to the required depth and density results in a surface elevation for those courses below that shown on the plan, the compacted and completed subgrade shall be left sufficiently high so that the widening courses will be finished to the proper elevation.