

PLAN
 SURVEYED
 PLOTTED
 NOTE BOOK
 NO. _____

PROFILE
 SURVEYED
 PLOTTED
 NOTE BOOK
 NO. _____

DRAINAGE

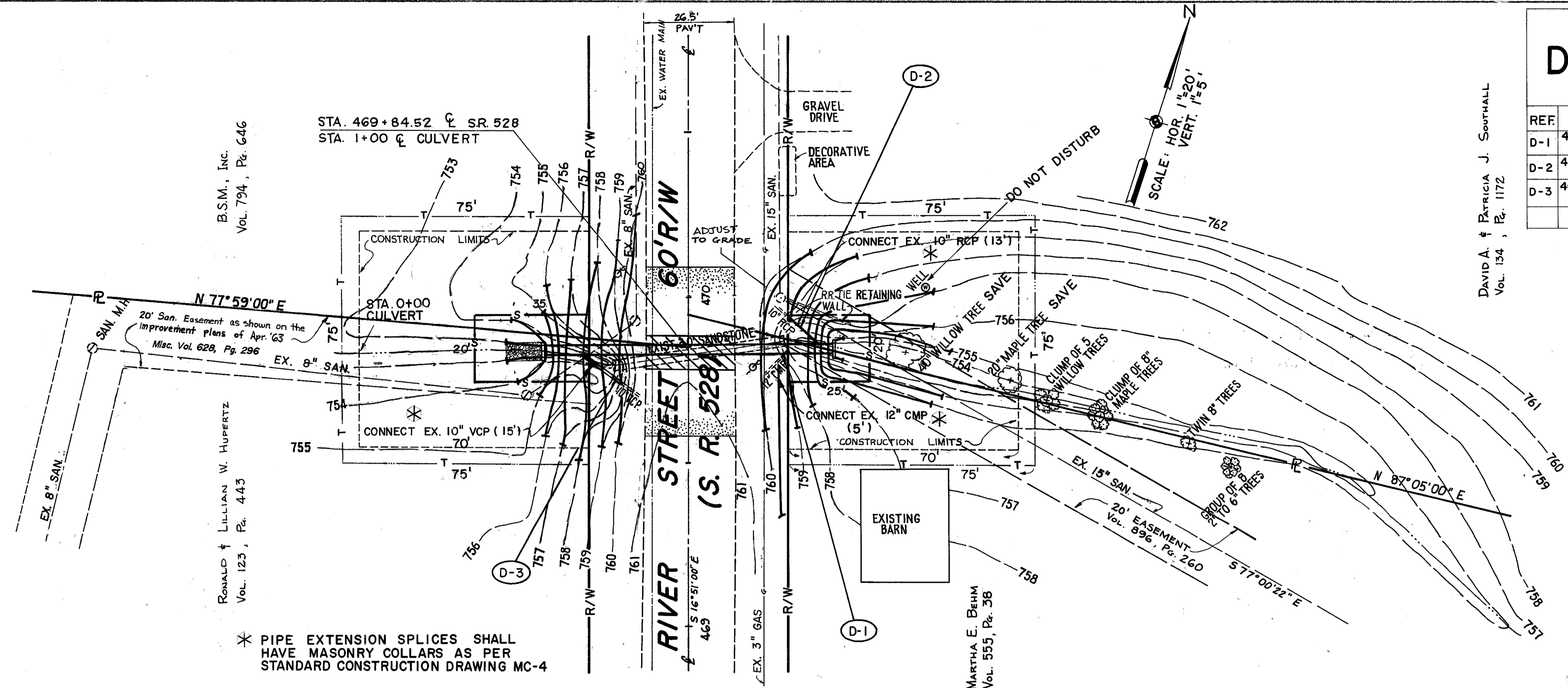
| REF. | LOCATION | CONDUIT 10" TYPE C L.F. | CONDUIT 12" TYPE C L.F. |
|-------|-------------------------------------|-------------------------|-------------------------|
| D-1 | 469+80, 26' RT TO 469+83 29' RT | | 5 |
| D-2 | 469+86, 39' RT TO 469+95 30' RT | 13 | |
| D-3 | 469+74, 20.5' LT. TO 469+83 32' LT. | 15 | |
| TOTAL | | 28 | 5 |

END PROJECT STA. 470+25
 END FEATHERING STA. 470+09.52

END PAVEMENT REPLACEMENT STA. 469+89.52
 BEGIN PAVEMENT REPLACEMENT STA. 469+79.52

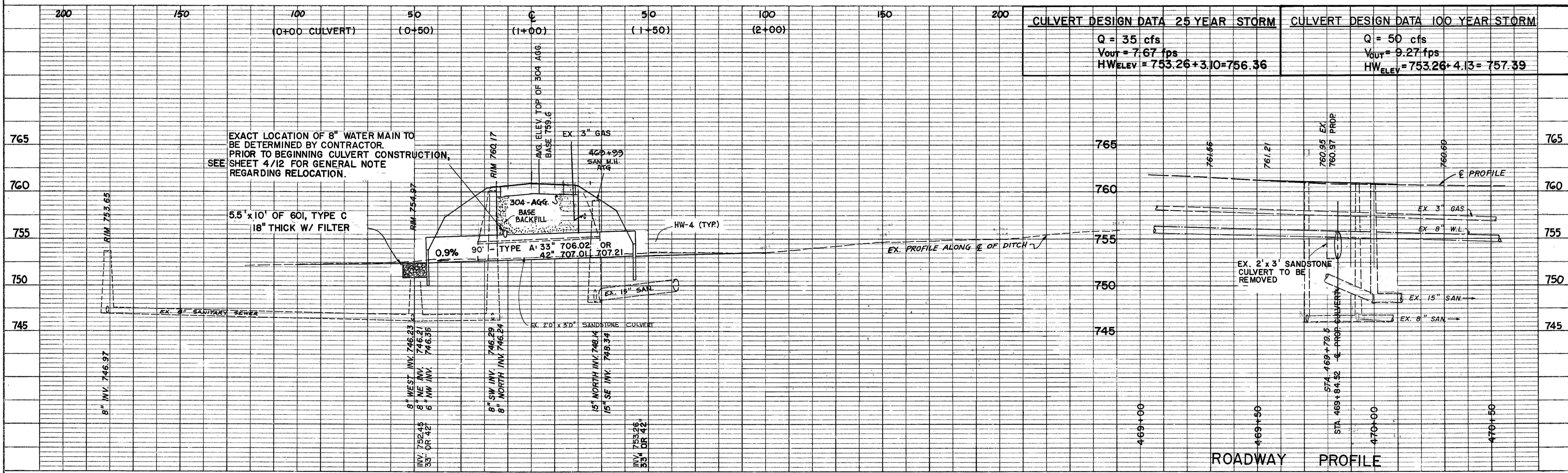
BEGIN FEATHERING STA. 469+59.52
 BEGIN PROJECT STA. 469+50

BENCHMARK: R.R. SPIKE P.P. # 84864.
 LOCATED STA. 470+06.72, 20.7' W
 OF C ELEV. = 761.00



* PIPE EXTENSION SPLICES SHALL HAVE MASONRY COLLARS AS PER STANDARD CONSTRUCTION DRAWING MC-4

| CULVERT DESIGN DATA 25 YEAR STORM | CULVERT DESIGN DATA 100 YEAR STORM |
|--|--|
| Q = 35 cfs $V_{out} = 7.67$ fps $HW_{ELEV} = 753.26 + 3.10 = 756.36$ | Q = 50 cfs $V_{out} = 9.27$ fps $HW_{ELEV} = 753.26 + 4.13 = 757.39$ |



ROADWAY & CULVERT PLAN & PROFILE