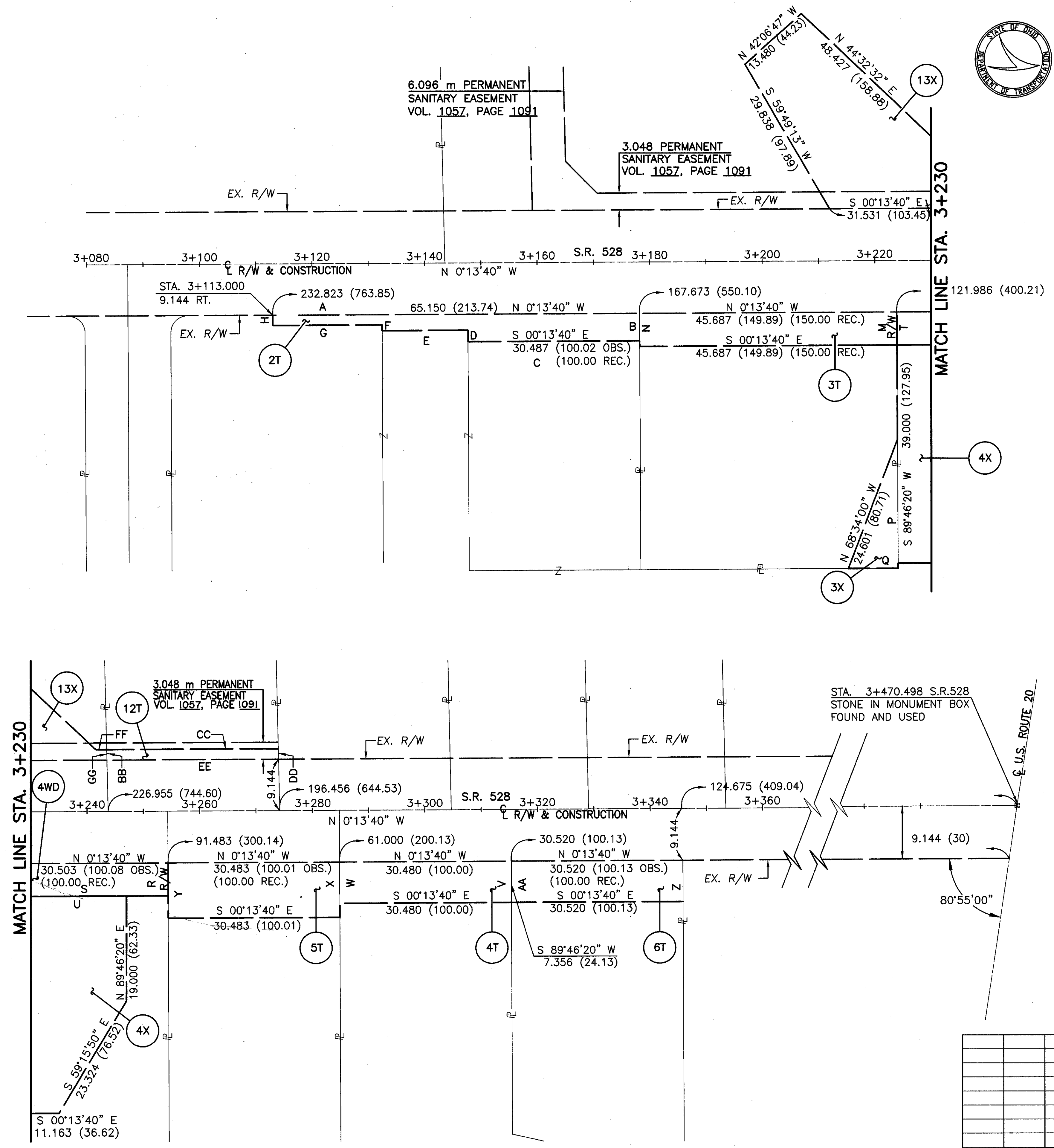


PARCEL REF.	BEARING	DISTANCE		AREA ha. (acres)
		METERS	FEET	
2T	B N 89°46'20" E	4.856	(15.93)	0.023 (0.056)
	C S 00°13'40" E	30.487	(100.02)	
	D S 89°46'20" W	2.000	(6.56)	
	E S 00°13'40" E	15.240	(50.00)	
	F S 89°46'20" W	1.000	(3.28)	
	G S 00°13'40" E	19.423	(63.72)	
	H S 89°46'20" W	1.856	(6.09)	
A N 00°13'40" W	65.150	(213.74)		
3T	M N 89°46'20" E	5.856	(19.21)	0.027 (0.066)
	S 00°13'40" E	45.687	(149.89)	
	N 00°13'40" W	45.687	(149.89)	
3X	P N 89°46'20" E	22.864	(75.01)	0.010 (0.026)
	Q S 00°13'40" E	9.081	(29.79)	
	N 68°34'00" W	24.601	(80.71)	
4WD	R N 89°46'20" E	5.856	(19.21)	0.018 (0.044)
	S S 00°13'40" E	30.503	(100.08)	
	T S 89°46'20" W	5.856	(19.21)	
4X	N 89°46'20" E	19.000	(62.33)	0.078 (0.193)
	S 59°15'50" E	23.324	(76.52)	
	S 00°13'40" E	11.163	(36.62)	
	S 89°46'20" W	39.000	(127.95)	
4T	U N 00°13'40" W	23.163	(75.99)	0.022 (0.055)
	V N 89°46'20" E	7.356	(24.13)	
	W S 00°13'40" E	30.480	(100.00)	
5T	X N 89°46'20" E	9.856	(32.34)	0.030 (0.074)
	S 00°13'40" E	30.483	(100.01)	
	Y S 89°46'20" W	9.856	(32.34)	
6T	Z N 89°46'20" E	7.356	(24.13)	0.023 (0.056)
	AA S 00°13'40" E	30.520	(100.13)	
	N 00°13'40" W	30.520	(100.13)	
12T	EE S 00°13'40" E	30.485	(100.02)	0.004 (0.010)
	BB S 88°42'50" W	1.353	(4.44)	
	CC N 00°13'40" W	30.485	(100.02)	
	DD N 88°42'50" E	1.353	(4.44)	
13X	GG N 88°42'50" E	1.353	(4.44)	0.074 (0.184)
	S 00°13'40" E	31.531	(103.45)	
	S 59°49'13" W	29.838	(97.89)	
	N 42°06'47" W	13.480	(44.23)	
	N 43°32'32" E	48.427	(158.88)	
	FF N 00°13'40" W	1.398	(4.59)	

NOTE: UNLESS SPECIFIED OTHERWISE, AREAS ARE STATED IN HECTARES WITH ENGLISH EQUIVALENTS IN (ACRES).  
1 HECTARE = 2.471 ACRES



REV.	DATE	DESCRIPTION