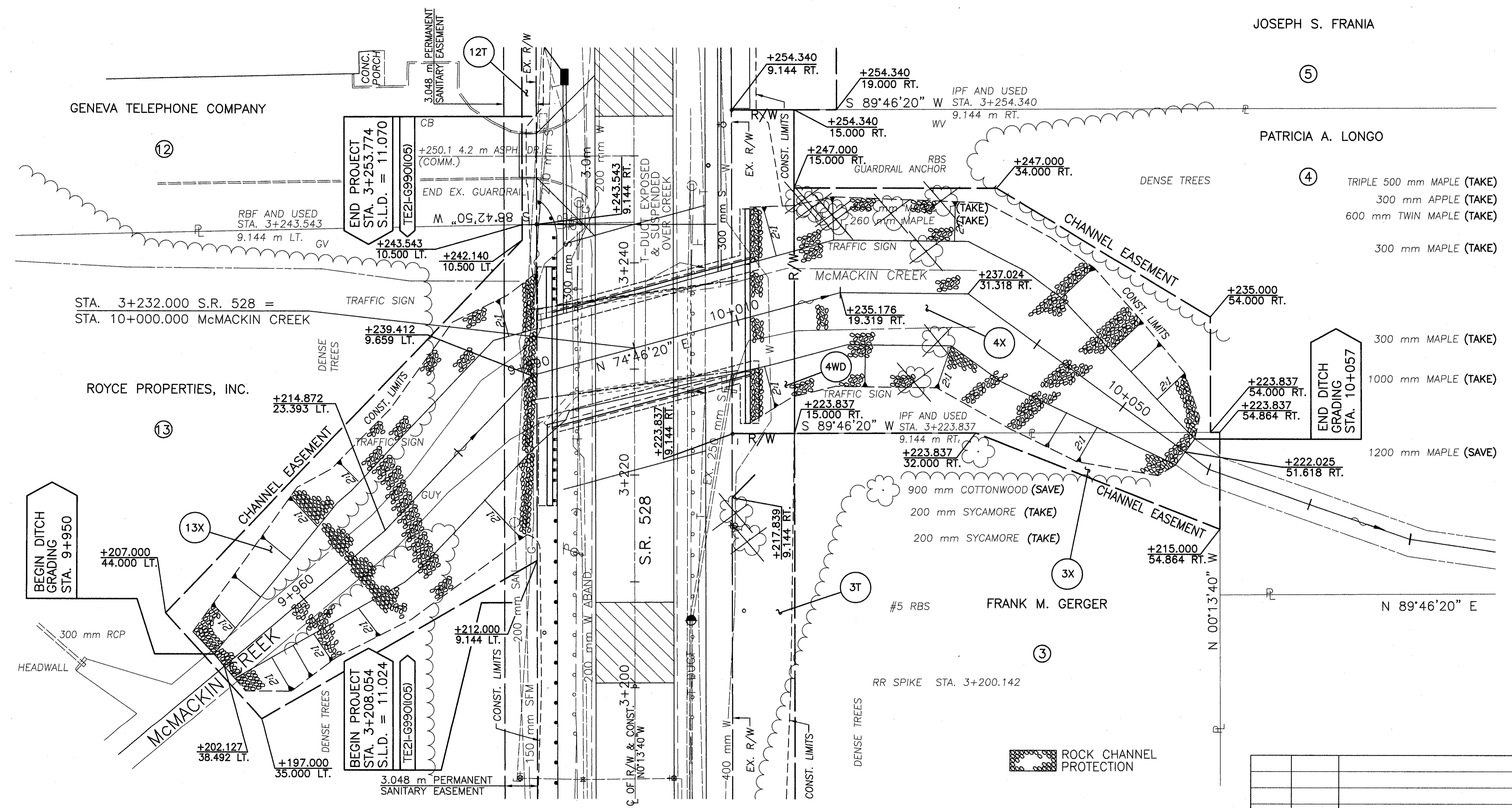


NOTE:
THE EXISTING R/W WIDTH AND LOCATION WERE DETERMINED USING:
-STATE OF OHIO, DEPARTMENT OF HIGHWAYS, CHANNEL CHANGE, BRIDGE NO. LA-528-69 OVER BIG CREEK, LAKE COUNTY, S.R.-528 SECTION F, STA. 106+06.00, OCT. 1947
-SURVEY BY McCOY ASSOCIATES, INC., JAN. 26, 1996

JOSEPH S. FRANIA

LAKE COUNTY MADISON TOWNSHIP LOT 1, TRACT 3 T-12N R-6W

LAKE COUNTY MADISON TOWNSHIP COWLES LOT, TRACT 2 T-12N R-6W



SEE SHEET 8 FOR BEARINGS AND DISTANCES

REV	DATE	DESCRIPTION