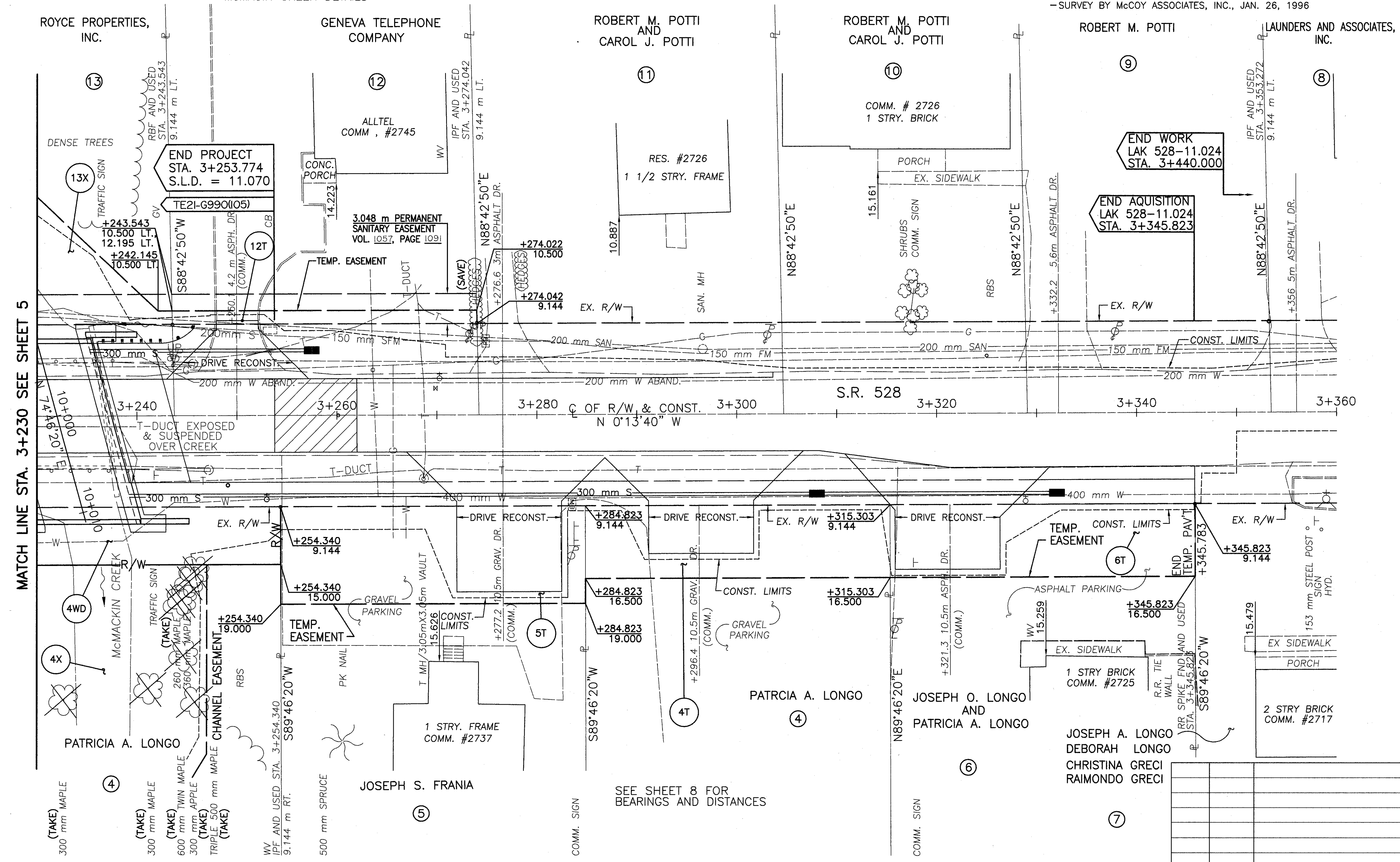


LAKE COUNTY MADISON COUNTY LOT 1, TRACT 3 T-12N R-6W

NOTE:
 THE EXISTING R/W WIDTH AND LOCATION WERE DETERMINED USING:
 -STATE OF OHIO, DEPARTMENT OF HIGHWAYS, CHANNEL CHANGE, BRIDGE NO. LA-528-69 OVER BIG CREEK, LAKE COUNTY, S.R.-528 SECTION F, STA. 106+06.00, OCT. 1947
 -SURVEY BY MCCOY ASSOCIATES, INC., JAN. 26, 1996

SEE SHEET 7 FOR McMACIN CREEK DETAILS



MATCH LINE STA. 3+230 SEE SHEET 5

SEE SHEET 8 FOR BEARINGS AND DISTANCES

END WORK
LAK 528-11.024
STA. 3+440.000

END ACQUISITION
LAK 528-11.024
STA. 3+345.823

RATIO 1:200
 HORIZONTAL SCALE IN METERS

PID NO. 12834

RIGHT OF WAY DETAILS
 STA. 3+230 TO STA. 3+360

LAK-528-11.024(06.85)

6/8

47
49

REV	DATE	DESCRIPTION

LAKE COUNTY MADISON COUNTY COWLES LOT, TRACT 2 T-12N R-6W