
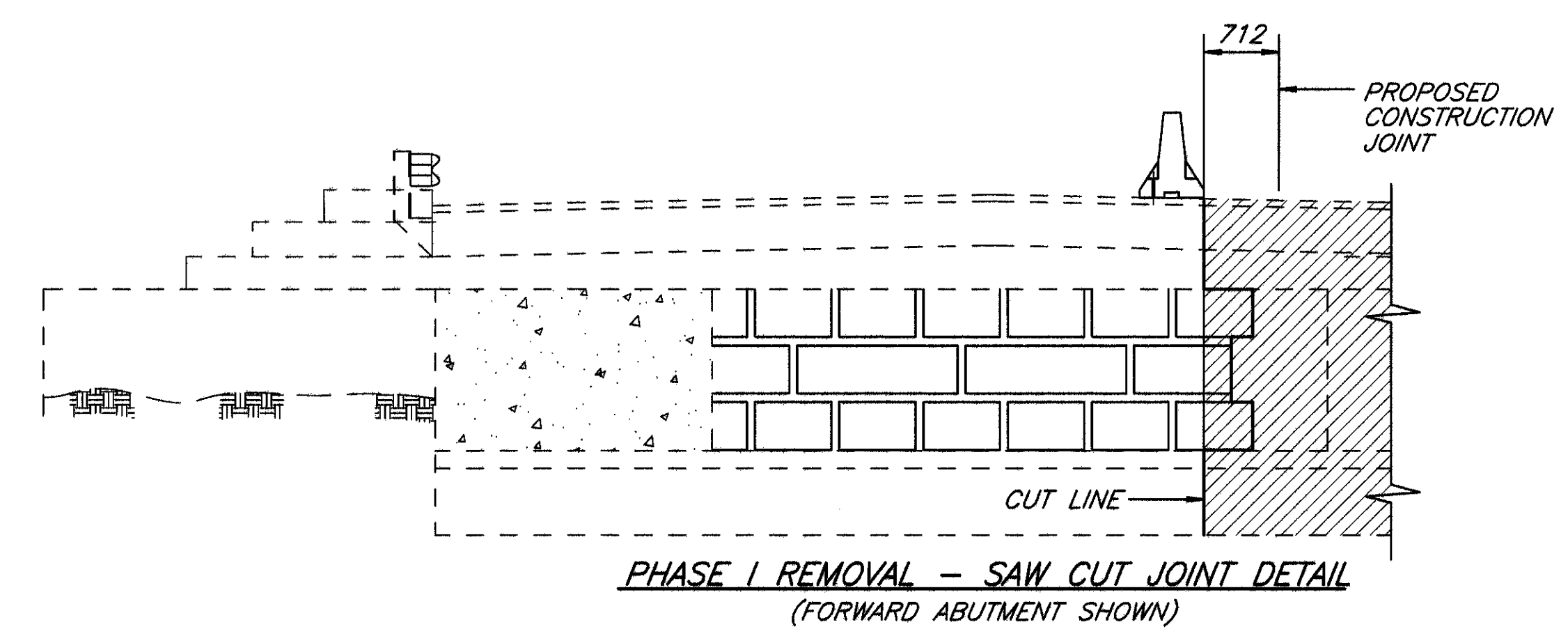
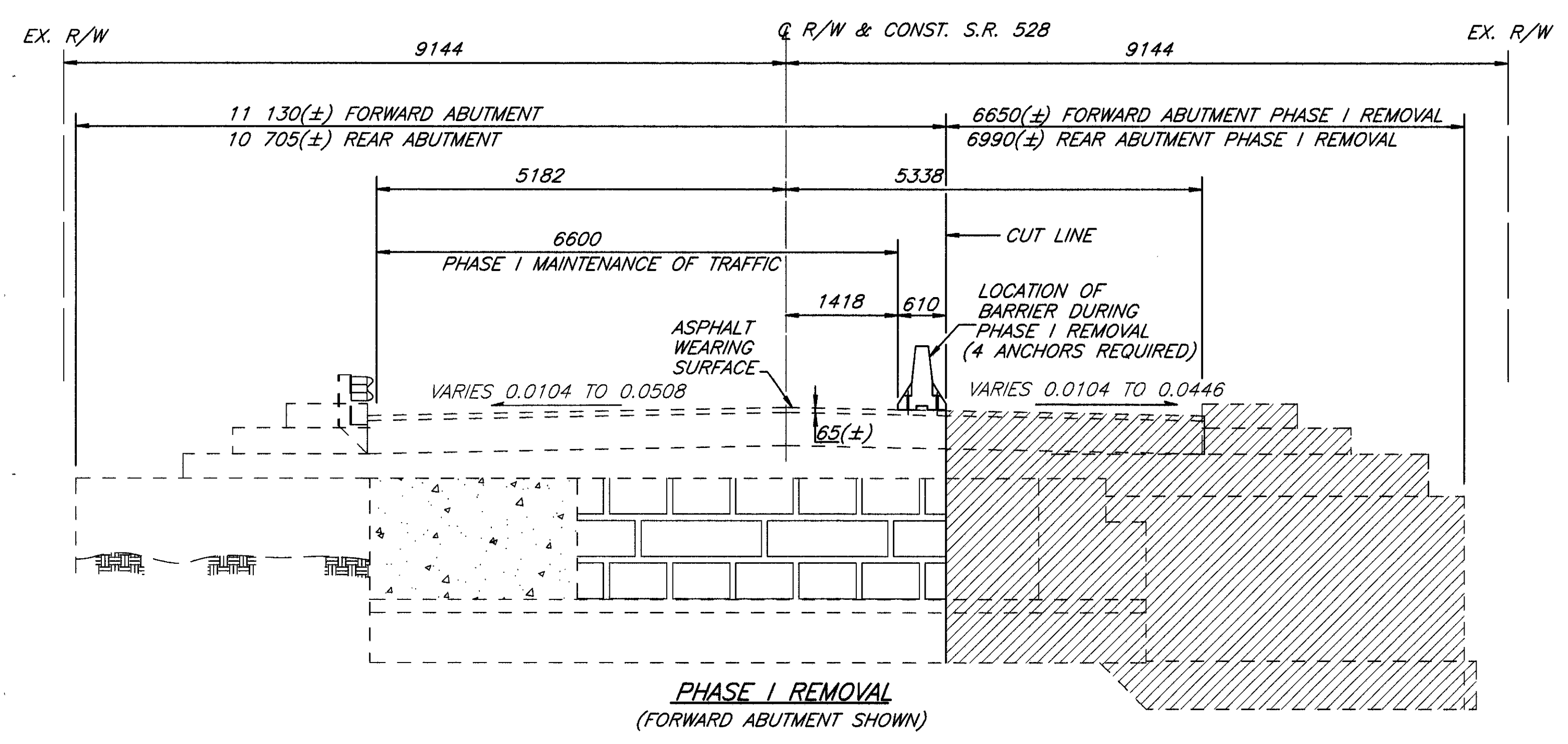


NOTES

- ①  DENOTES AREA TO BE REMOVED
- ② ITEM 622 PORTABLE CONCRETE BARRIER 813 mm BRIDGE MOUNTED, AS PER PLAN, IS CARRIED IN THE ROADWAY QUANTITY.
- ③ FOR ADDITIONAL DETAILS OF PORTABLE CONCRETE BARRIER, 813 mm BRIDGE MOUNTED, AS PER PLAN, SEE STANDARD DRAWING PCB-91M.



NOTE:
 CARE SHALL BE TAKEN WHEN SAW CUTTING STONE BLOCKS FOR PHASE REMOVAL. STONE IS TO BE SAW CUT IN SUCH A WAY THAT THE INTEGRITY OF THE REMAINING ABUTMENT IS MAINTAINED. THE CONTRACTOR HAS THE OPTION OF SAW CUTTING THE STONE VERTICALLY OR MAY FOLLOW THE JOINTS OF THE STONE VERTICALLY AND HORIZONTALLY, AS LONG AS PROTRUDING STONE BLOCKS DO NOT INTERFERE WITH THE PROPOSED CONSTRUCTION JOINT. SAW CUTTING IS TO BE THE FULL DEPTH THICKNESS OF THE STONE AND/OR CONCRETE ABUTMENT.

