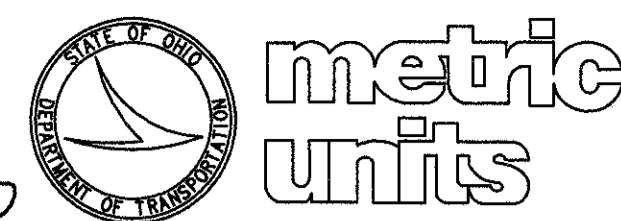


BM No. 1
EAST RIM T. VAULT EAST SIDE
OF S.R. 528
STA. 3+268.682, 6.656m RT.
ELEV. 204.165

STRUCTURE PLANS REVIEWED
BY URS CONSULTANTS,
DATE 5/15/28



LEGEND

- FEATHER BUTT JOINT
- TEMPORARY PAVEMENT TO REMAIN IN PLACE AS SHOULDER
- 750 mm ROCK CHANNEL PROTECTION TYPE 'B' WITH FILTER FABRIC
- LIMITS OF CHANNEL EXCAVATION

NOTES

- ① EARTHWORK LIMITS SHOWN ARE APPROXIMATE. ACTUAL SLOPES SHALL CONFORM TO PLAN CROSS SECTIONS.
- ② ALL DIMENSIONS ARE mm UNLESS OTHERWISE NOTED.
- ③ T-DUCTS ARE EXPOSED AND SUSPENDED ON EXISTING BRIDGE OVER CREEK, AND WILL BE RELOCATED BY THE OWNER.
- ④ ALL EXISTING UTILITIES SHALL REMAIN UNLESS OTHERWISE SPECIFIED.

FOUNDATION INVESTIGATION LEGEND

● INDICATES BORING LOCATION

SITE	STATION	OFFSET	ELEV.
B1	3+240.09	2.74m, LT	204.09
B2	3+223.97	4.57m, RT	204.05

DRAINAGE DATA

DRAINAGE AREA = 2791.56 ha
 Q25 = 32.14 m/s V25 = 1.60 m/s
 Q100 = 43.13 m/s V100 = 2.13 m/s
 NORMAL WATER SURFACE EL. = 202.29
 EXISTING WATERWAY OPENING = 14.3 SQUARE METERS
 PROPOSED WATERWAY OPENING = 19.9 SQUARE METERS

DESIGN DESIGNATION

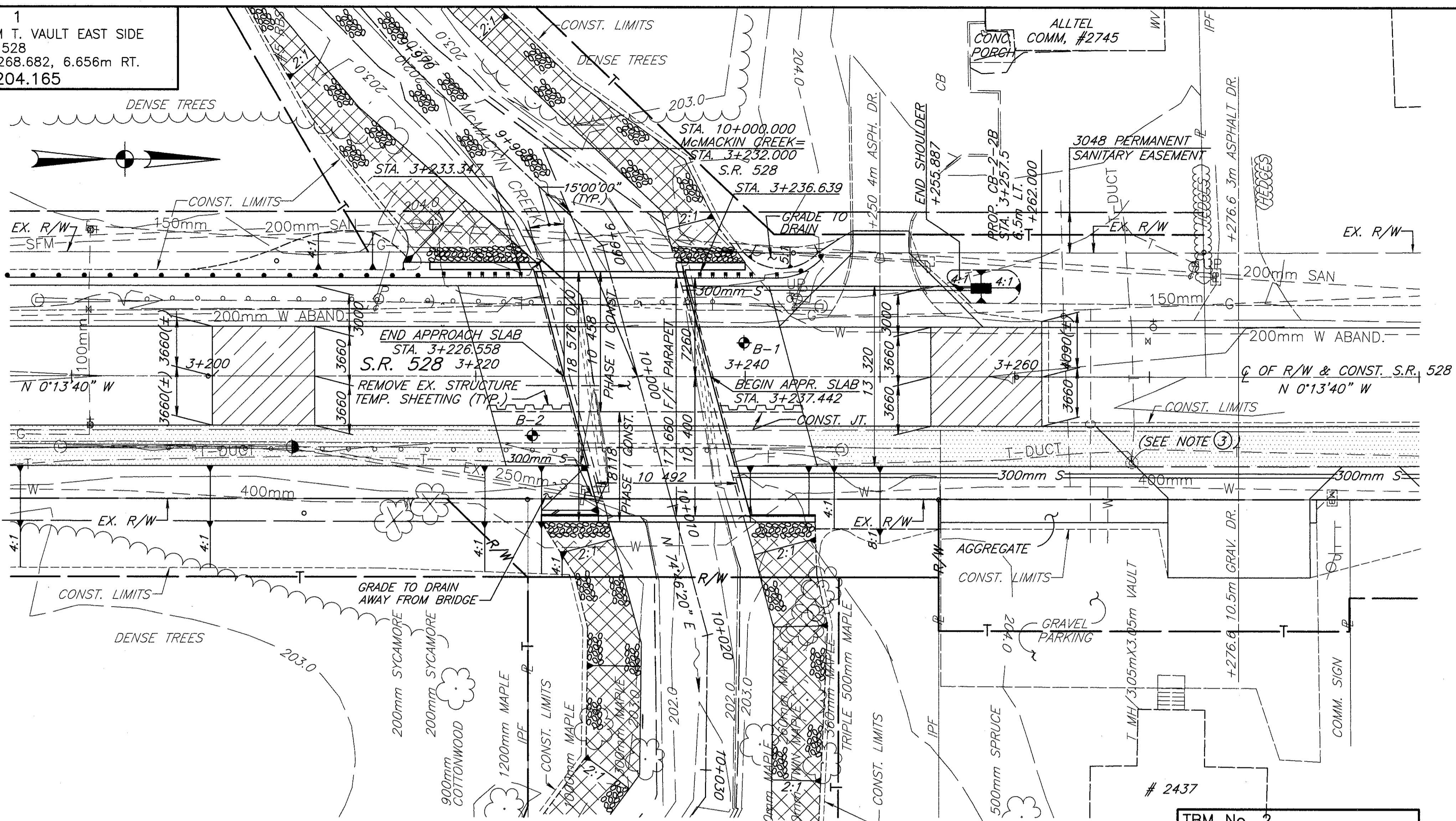
CURRENT ADT(1998) = 11600
 DESIGN YEAR ADT (2018) = 15700
 ADTT = 314

EXISTING STRUCTURE

TYPE: REINFORCED CONCRETE SLAB SUPERSTRUCTURE ON EXISTING STONE MASONRY AND CONCRETE ABUTMENTS CAPPED AND EXTENDED WITH CONCRETE.
 SPAN: 7925 mm±
 ROADWAY: 10 365 mm± FACE TO FACE OF GUARDRAIL POSTS
 LOADING S-15-46 (ENGLISH UNITS)
 SKEW: 8°00'00"± RT. FORWARD
 ALIGNMENT: TANGENT
 WEARING SURFACE: 65 mm± LATEX MODIFIED CONC. OVERLAY
 SUPERELEVATION: NONE
 STRUCTURE FILE NUMBER: SFN 4306120

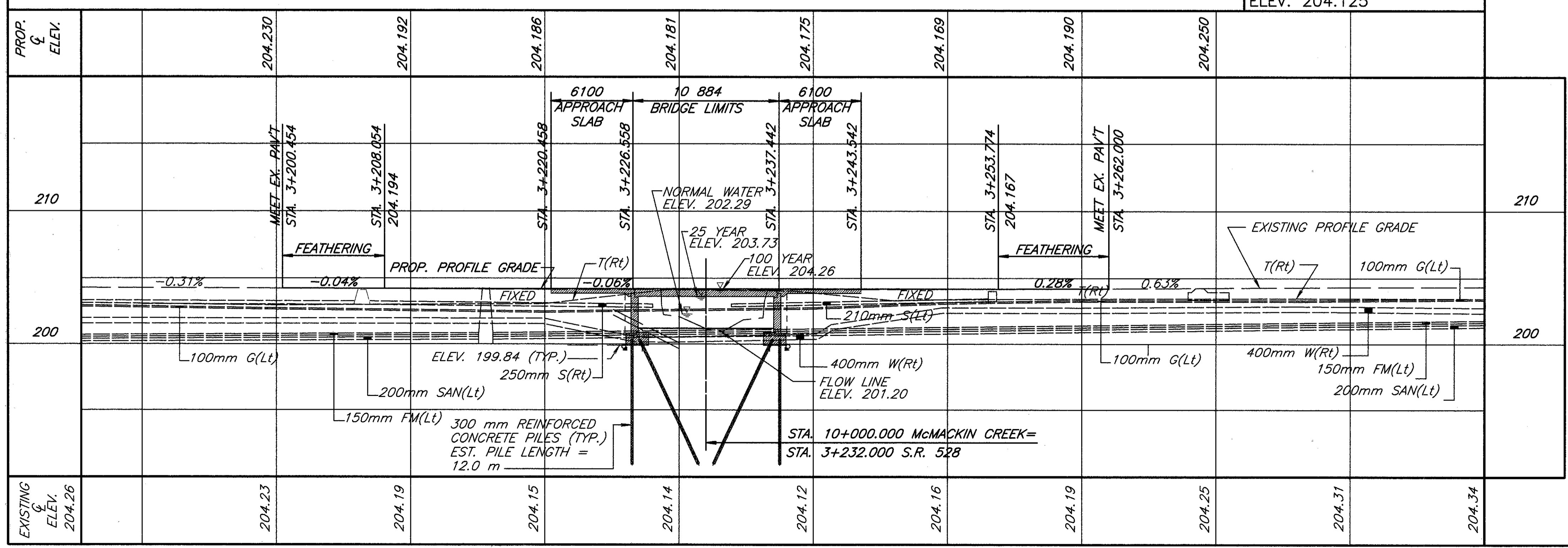
PROPOSED STRUCTURE

TYPE: REINFORCED CONCRETE SLAB BRIDGE ON CONCRETE WALL TYPE ABUTMENTS
 SPAN: 10 492 mm
 ROADWAY: 17 660 mm
 LOADING: MS18 (CASE II) WITH ALTERNATE MILITARY LOADING
 SKEW 15°00'00" RT. FORWARD
 ALIGNMENT: TANGENT
 WEARING SURFACE: MONOLITHIC CONCRETE
 SUPERELEVATION: NONE, CROWN 0.016
 APPROACH SLAB: 6100 mm (AS-1-81M)
 LATITUDE: 81°02'45"
 LONGITUDE: 41°47'45"



PLAN

TBM No. 2
REBAR SET EAST SIDE
OF S.R. 528
STA. 3+249.096, 6.958m RT.
ELEV. 204.125



PROFILE ALONG C S.R. 528

DESIGN AGENCY: MCCOY ASSOCIATES INC. 367 GHENT ROAD, SUITE 1A AKRON, OHIO 44333
 DATE: 12-31-96
 DRAWN: JTS
 DESIGNED: PSB
 CHECKED: SAM
 STRUCTURE FILE NUMBER: 4306139
 LAKE COUNTY STA. 3+226.558 STA. 3+237.442
 SITE PLAN: BRIDGE NO. LAK-528-11024 LAK-528-0885 (ENGLISH) OVER McMACKIN CREEK
 LAK-528-11.024
 1/9
 33/49