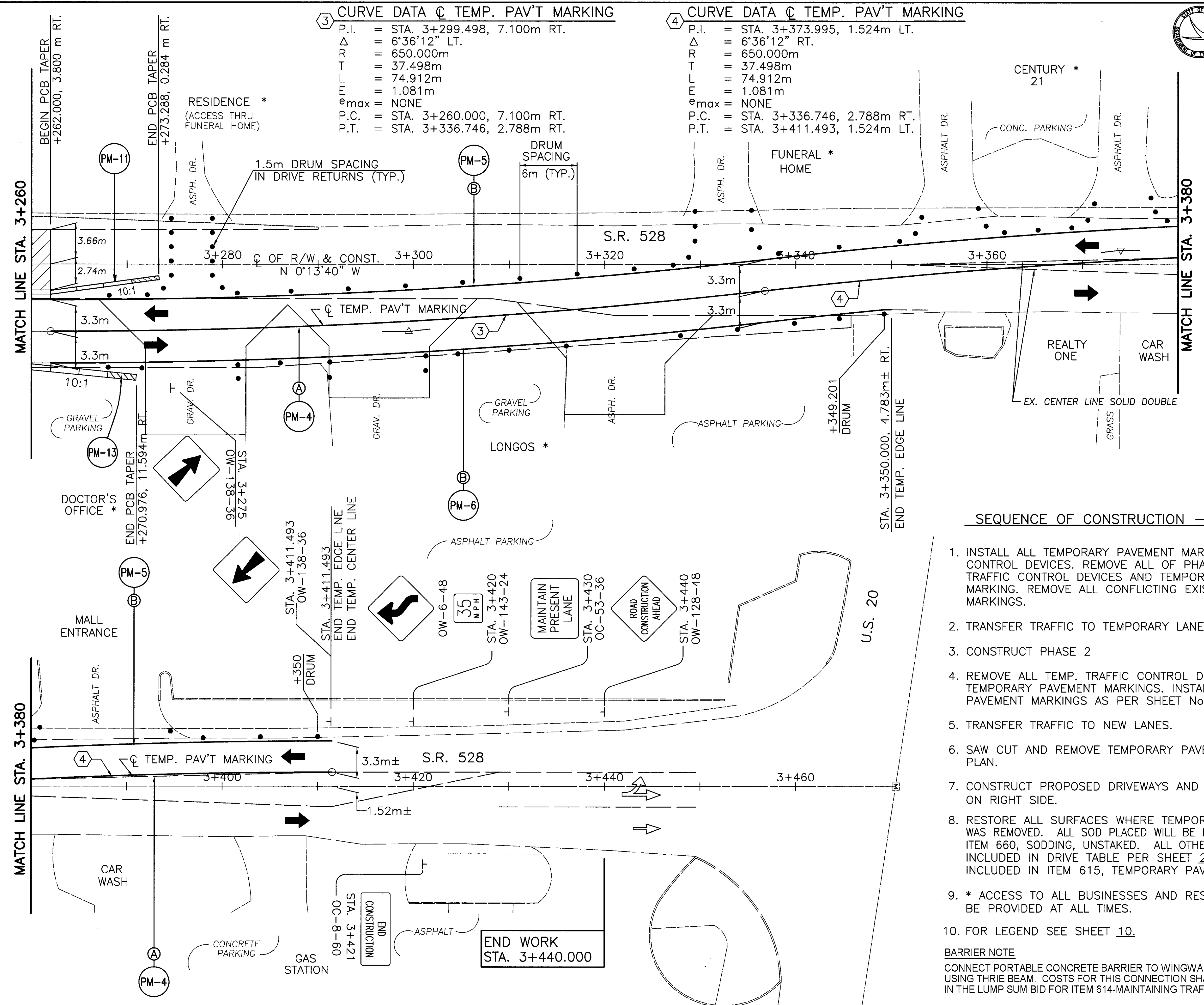


3 CURVE DATA @ TEMP. PAV'T MARKING

P.I. = STA. 3+299.498, 7.100m RT.
 Δ = 6°36'12" LT.
 R = 650.000m
 T = 37.498m
 L = 74.912m
 E = 1.081m
 e_{max} = NONE
 P.C. = STA. 3+260.000, 7.100m RT.
 P.T. = STA. 3+336.746, 2.788m RT.

4 CURVE DATA @ TEMP. PAV'T MARKING

P.I. = STA. 3+373.995, 1.524m LT.
 Δ = 6°36'12" RT.
 R = 650.000m
 T = 37.498m
 L = 74.912m
 E = 1.081m
 e_{max} = NONE
 P.C. = STA. 3+336.746, 2.788m RT.
 P.T. = STA. 3+411.493, 1.524m LT.



- SEQUENCE OF CONSTRUCTION - PHASE 2**
1. INSTALL ALL TEMPORARY PAVEMENT MARKINGS, TRAFFIC CONTROL DEVICES. REMOVE ALL OF PHASE 1 TEMPORARY TRAFFIC CONTROL DEVICES AND TEMPORARY PAVEMENT MARKING. REMOVE ALL CONFLICTING EXIST. PAVEMENT MARKINGS.
 2. TRANSFER TRAFFIC TO TEMPORARY LANES.
 3. CONSTRUCT PHASE 2
 4. REMOVE ALL TEMP. TRAFFIC CONTROL DEVICES AND TEMPORARY PAVEMENT MARKINGS. INSTALL PERMANENT PAVEMENT MARKINGS AS PER SHEET No. 32.
 5. TRANSFER TRAFFIC TO NEW LANES.
 6. SAW CUT AND REMOVE TEMPORARY PAVEMENT AS PER PLAN.
 7. CONSTRUCT PROPOSED DRIVEWAYS AND STORM SEWER ON RIGHT SIDE.
 8. RESTORE ALL SURFACES WHERE TEMPORARY PAVEMENT WAS REMOVED. ALL SOD PLACED WILL BE PAID FOR UNDER ITEM 660, SODDING, UNSTAKED. ALL OTHER SURFACES NOT INCLUDED IN DRIVE TABLE PER SHEET 29 SHALL BE INCLUDED IN ITEM 615, TEMPORARY PAVEMENT CLASS B.
 9. * ACCESS TO ALL BUSINESSES AND RESIDENCES SHALL BE PROVIDED AT ALL TIMES.
 10. FOR LEGEND SEE SHEET 10.

BARRIER NOTE
 CONNECT PORTABLE CONCRETE BARRIER TO WINGWALL PARAPETS USING THRIE BEAM. COSTS FOR THIS CONNECTION SHALL BE INCLUDED IN THE LUMP SUM BID FOR ITEM 614-MAINTAINING TRAFFIC.