

MAINTENANCE OF TRAFFIC NOTES

**ITEM 614, MAINTAINING TRAFFIC**

A MINIMUM OF ONE LANE TRAFFIC IN EACH DIRECTION SHALL BE MAINTAINED AT ALL TIMES BY USE OF THE EXISTING PAVEMENT, THE COMPLETED PAVEMENT, 615 TEMPORARY ROADS, AND TEMPORARY SURFACES USING ITEMS 448 AND 616.

THE FOLLOWING ESTIMATED QUANTITIES HAVE BEEN INCLUDED IN THE GENERAL SUMMARY FOR USE AS DIRECTED BY THE ENGINEER FOR THE MAINTENANCE OF TRAFFIC.

- 448, BITUMINOUS CONCRETE FOR MAINTAINING TRAFFIC 10 CU. METER
- 616, CALCIUM CHLORIDE 2 METRIC TON
- 616, WATER 200 CU. METER

ALL WORK AND TRAFFIC CONTROL DEVICES SHALL BE IN ACCORDANCE WITH 614 AND OTHER APPLICABLE PORTIONS OF THE SPECIFICATIONS, AS WELL AS THE OHIO MANUAL OF UNIFORM TRAFFIC CONTROL DEVICES. PAYMENT FOR ALL LABOR, EQUIPMENT AND MATERIALS SHALL BE INCLUDED IN THE LUMP SUM CONTRACT PRICE FOR 614, MAINTAINING TRAFFIC, UNLESS SEPARATELY ITEMIZED IN THE PLANS.

**ITEM 615, TEMPORARY PAVEMENT, CLASS B, AS PER PLAN A OR B**

THIS FLEXIBLE BUILDUP IS COMPOSED OF THE FOLLOWING ITEMS:  
 ITEM 448 - 32 mm ASPHALT CONCRETE SURFACE COURSE, TYPE 1, PPG 64-22  
 ITEM 448 - 38 mm ASPHALT CONCRETE INTERMEDIATE COURSE, TYPE 1, PG 64-22  
 ITEM 301 - 152 mm BITUMINOUS AGGREGATE BASE, PG 64-22  
 ITEM 408 - BITUMINOUS PRIME COAT  
 ITEM 304 - 102 mm AGGREGATE BASE  
 ITEM 203 - SUBGRADE COMPACTION

THE TEMPORARY PAVEMENT TO BE REMOVED SHALL BE DESIGNATED AS PER PLAN A AND THE TEMPORARY PAVEMENT TO REMAIN SHALL BE DESIGNATED AS PER PLAN B.

THE TEMPORARY PAVEMENT TO BE REMOVED SHALL BE SAW CUT AND REMOVED AS SHOWN ON PLANS. THE AREA SHALL BE BACKFILLED AND GRADED AS SHOWN ON CROSS SECTIONS. COST OF ALL WORK SHALL BE INCLUDED IN THE LUMP-SUM ITEM 615, TEMPORARY: PAVEMENT, CLASS B.

**TEMPORARY WORK ZONE SIGNS**

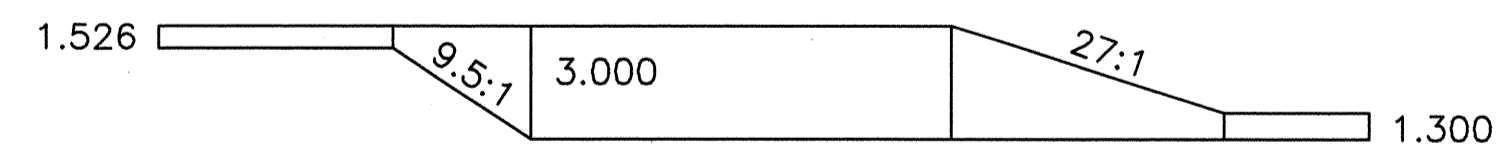
THE COST FOR FURNISHING, INSTALLING, MAINTAINING, MOVING AND REMOVING ALL TEMPORARY WORK ZONE SIGNS AS SHOWN ON THE PLANS AND AS DIRECTED BY THE ENGINEER SHALL BE INCLUDED IN THE LUMP-SUM ITEM 614, MAINTAINING TRAFFIC.

MAINTENANCE OF TRAFFIC CALCULATIONS

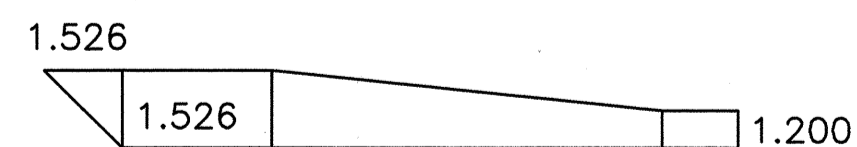
SEE MAINTENANCE OF TRAFFIC SHEETS 10-11

**ITEM 615 - TEMPORARY PAVEMENT, CLASS B, AS PER PLAN, B**

TEMPORARY PAVEMENT WIDENING TO REMAIN



- STA. 3+095.987 TO STA. 3+114.091 RT. =  $18.104 \times 1.526$  = 27.627 SQ. METERS
- STA. 3+114.091 TO STA. 3+128.236 RT. =  $14.145 \times [(1.526 + 3.000)/2]$  = 32.010 SQ. METERS
- STA. 3+128.236 TO STA. 3+221.600 RT. =  $93.364 \times 3.000$  = 280.092 SQ. METERS
- STA. 3+245.000 TO STA. 3+308.237 RT. =  $63.237 \times 3.000$  = 189.711 SQ. METERS
- STA. 3+308.237 TO STA. 3+321.300 RT. =  $13.063 \times [(1.300 + 3.000)/2]$  = 28.085 SQ. METERS
- STA. 3+321.300 TO STA. 3+345.783 RT. =  $24.483 \times 1.300$  = 31.828 SQ. METERS



- STA. 3+242.206 TO STA. 3+243.732 LT. =  $(1.526 \times 1.526)/2$  = 1.164 SQ. METERS
- STA. 3+243.732 TO STA. 3+264.000 LT. =  $820.268 \times 1.526$  = 30.929 SQ. METERS
- STA. 3+264.000 TO STA. 3+294.694 LT. =  $30.694 \times [(1.526 + 1.200)/2]$  = 41.836 SQ. METERS
- STA. 3+294.694 TO STA. 3+305.438 LT. =  $10.744 \times 1.2$  = 12.893 SQ. METERS

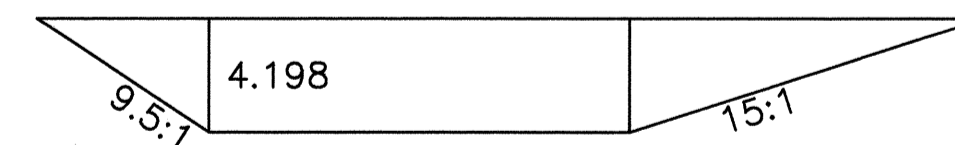
TOTAL CARRIED TO GENERAL SUMMARY = 676.175 SQ. METERS

MAINTENANCE OF TRAFFIC SUB-SUMMARY

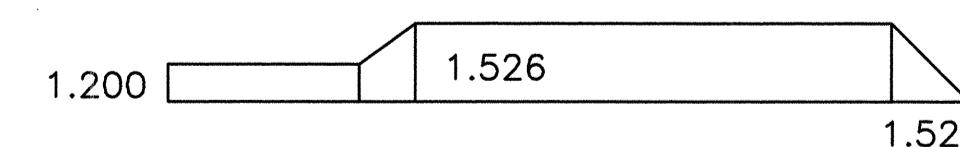
REF. No.	SHEET No.	STATION TO STATION	SIDE	614					622	
				TEMPORARY CENTER LINE, CLASS I DOUBLE SOLID	TEMPORARY EDGE LINE, CLASS I WHITE	MAINTAINING TRAFFIC	OBJECT MARKER	BARRIER REFLECTOR	PCB, BRIDGE MOUNTED, 813 MM	PCB, 813 MM
				KM	KM	LUMP	EACH	EACH	METER	METER
PHASE 1										
PM-1	10	3+135.000 TO 3+260.000	LT.	0.125						
PM-2	10	3+135.000 TO 3+260.000	LT.		0.125					
PM-3	10	3+095.987 TO 3+260.000	RT.		0.164					
PM-7	10	3+149.186 TO 3+228.038	RT.				10	10		79
PM-14	10	3+228.038 TO 3+235.963	RT.				2	2	8	
PM-8	10	3+235.963 TO 3+260.000	RT.				4	4		24
PM-9	10	3+236.136 TO 3+245.124	LT.				2	2		9
PHASE 2										
PM-1	11	3+260.000 TO 3+350.000	LT.	0.090						
PM-2	11	3+260.000 TO 3+350.000	LT.		0.090					
PM-3	11	3+260.000 TO 3+350.000	RT.		0.090					
PM-8	11	3+260.000 TO 3+262.000	RT.							2
PM-4	12	3+064.772 TO 3+260.000	RT.	0.195						
PM-5	12	3+064.772 TO 3+260.000	LT.-RT.		0.195					
PM-6	12	3+064.772 TO 3+260.000	RT.		0.195					
PM-10	12	3+149.663 TO 3+226.558	LT.-RT.				11	11		77
PM-11	12	3+237.442 TO 3+260.000	RT.				4	4		23
PM-12	12	3+178.000 TO 3+225.538	RT.				7	7		48
PM-13	12	3+244.036 TO 3+260.000	RT.				3	3		16
PM-14	12	3+226.558 TO 3+237.442	RT.				2	2	11	
PM-4	13	3+260.000 TO 3+411.493	LT.-RT.	0.152						
PM-5	13	3+260.000 TO 3+411.493	LT.-RT.		0.152					
PM-6	13	3+260.000 TO 3+350.000	RT.		0.090					
PM-11	13	3+260.000 TO 3+273.288	LT.-RT.				3	3		13
PM-13	13	3+260.000 TO 3+270.976	RT.				2	2		11
TOTALS CARRIED TO GENERAL SUMMARY				0.562	1.101	LUMP	50	50	19	302

**ITEM 615 - TEMPORARY PAVEMENT, CLASS B, AS PER PLAN, A**

TEMPORARY PAVEMENT WIDENING TO BE REMOVED



- STA. 3+128.236 TO STA. 3+168.519 RT. =  $(40.283 \times 4.198)/2$  = 84.554 SQ. METERS
- STA. 3+168.519 TO STA. 3+227.200 RT. =  $58.681 \times 4.198$  = 246.343 SQ. METERS
- STA. 3+239.800 TO STA. 3+283.751 RT. =  $43.951 \times 4.198$  = 184.506 SQ. METERS
- STA. 3+283.751 TO STA. 3+345.783 RT. =  $(62.032 \times 4.198)/2$  = 130.205 SQ. METERS



- STA. 3+155.000 TO STA. 3+187.306 LT. =  $32.306 \times 1.200$  = 38.767 SQ. METERS
- STA. 3+187.306 TO STA. 3+196.000 LT. =  $8.694 \times [(1.200+1.526)/2]$  = 11.850 SQ. METERS
- STA. 3+196.000 TO STA. 3+228.038 LT. =  $32.038 \times 1.526$  = 48.890 SQ. METERS
- STA. 3+235.963 TO STA. 3+248.592 LT. =  $12.629 \times 1.526$  = 19.272 SQ. METERS

TOTAL CARRIED TO GENERAL SUMMARY = 764.387 SQ. METERS