

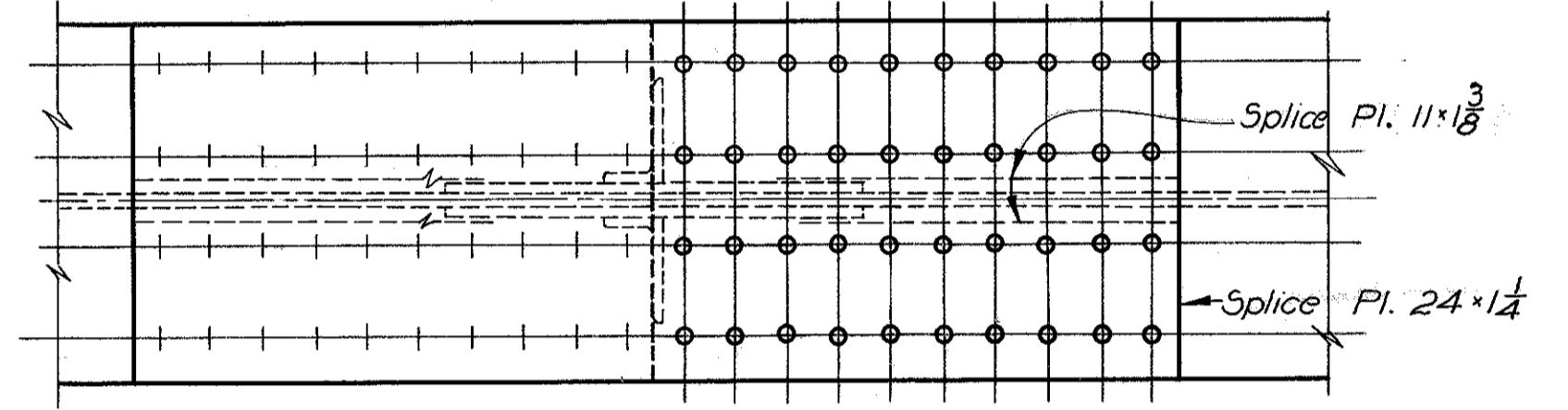
Number of each required		Bolster No.	Rocker No.	ROCKER AND BOLSTER DIMENSIONS (in inches)												
Bolster	Rocker			F	B	L	H	T	R	C	A	Y	K	D	G	M
8	8	B-540	R-540	1	24	36	26 1/2	4	18	4	4	1 15/16	18 1/4	4 3/4	16	30

NOTE: For details of ABUTMENT ROLLER BEARING See Sheet No. 70

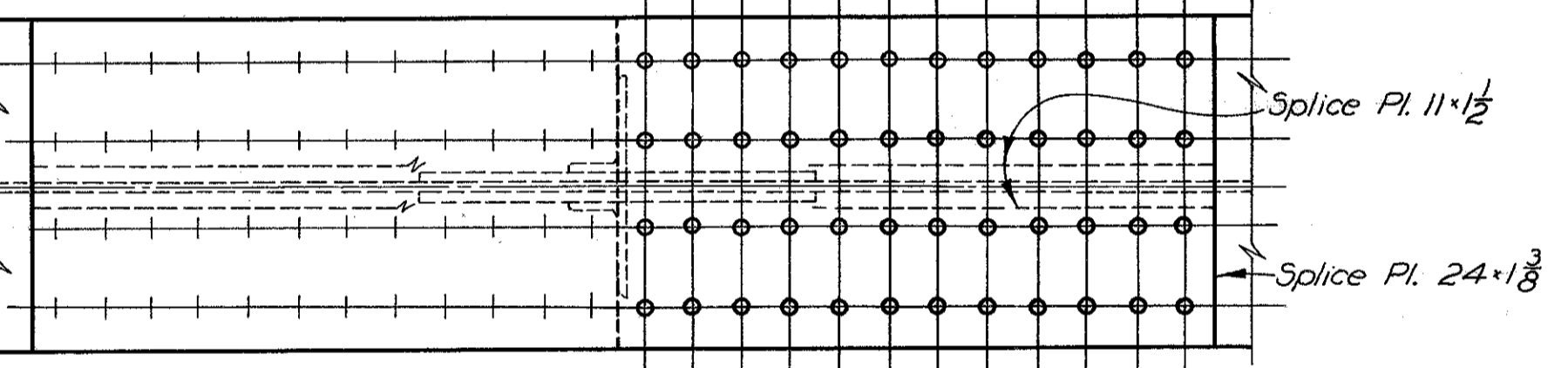
STRUCTURAL STEEL BOLSTER

STRUCTURAL STEEL ROCKER

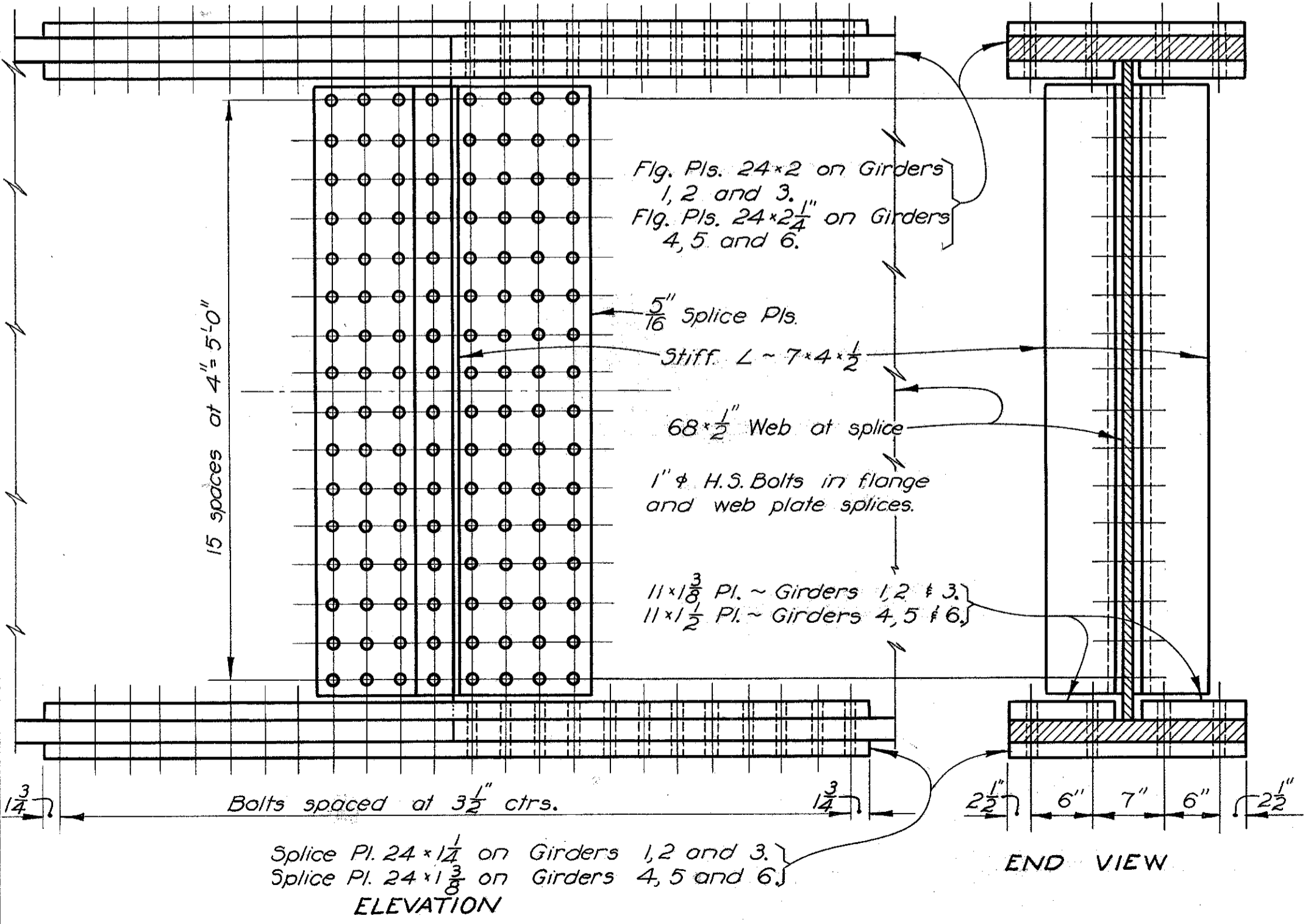
See Table for additional dimensions.



PLAN OF FIELD SPLICE FOR GIRDERS 1, 2 AND 3



PLAN OF FIELD SPLICE FOR GIRDERS 4, 5 AND 6



ELEVATION

END VIEW

DETAILS OF GIRDER FIELD SPLICES

ROCKER AND BOLSTER SETTING DATA (Dist. in inches)

Temperature at time of setting, °F.	S. Abut. & Abut. Brg.	Pier 1	Pier 2	Pier 3	Pier 4	N. Abut. & Roller
+ 110°F	+ 1/2 - 3/4	1"	1/2"	1/2"	1"	1 1/2 - 3/4
+ 90°	+ 3/4 - 3/8	1/2"	1/8"	1/8"	1/2"	3/4 - 3/4
+ 70°	0	0	0	0	0	0
+ 50°	- 3/4 - 3/8	- 1/2"	- 1/8"	- 1/8"	- 1/2"	- 3/4 - 3/4
+ 30°	- 1/2 - 3/4	- 1"	- 1/4"	- 1/4"	- 1"	- 1 1/2 - 3/4
+ 10°	- 2/8 - 1/4	- 1 1/2"	- 1/2"	- 1/2"	- 1 1/2"	- 2 1/8 - 1/4
0°	- 2 1/2 - 1 1/4	- 1 7/8"	- 3/8"	- 9/16"	- 1 7/8"	- 2 1/2 - 1 1/4
- 10°	- 2 1/8 - 1 1/4	- 1 7/8"	- 5/8"	- 5/8"	- 1 7/8"	- 2 1/8 - 1 1/4
- 20°F	- 3 1/4 - 1 3/8	- 2 1/8"	- 3/4"	- 3/4"	- 2 1/8"	- 3 1/4 - 1 3/8

"+" Indicates position of rollers moved away from & of bridge or rockers tilted away from & bridge for temperatures above 70°F.
 "-" Indicates position of rollers moved toward & of bridge or rockers tilted toward & bridge for temperatures below 70°F.

STATE OF OHIO
DEPARTMENT OF HIGHWAYS
DIVISION OF DESIGN AND CONSTRUCTION
BUREAU OF BRIDGES

SUPERSTRUCTURE DETAILS
BRIDGE No. LAK-528-0192
OVER GRAND RIVER
LAKE COUNTY

Sta. 37 + 85.50
To 47 + 72.50

DESIGNED	DRAWN	TRACED	CHECKED	REVIEWED	DATE	REVISED
KED	KED	G.P.G.	R.S.	BFG	8-24-60	