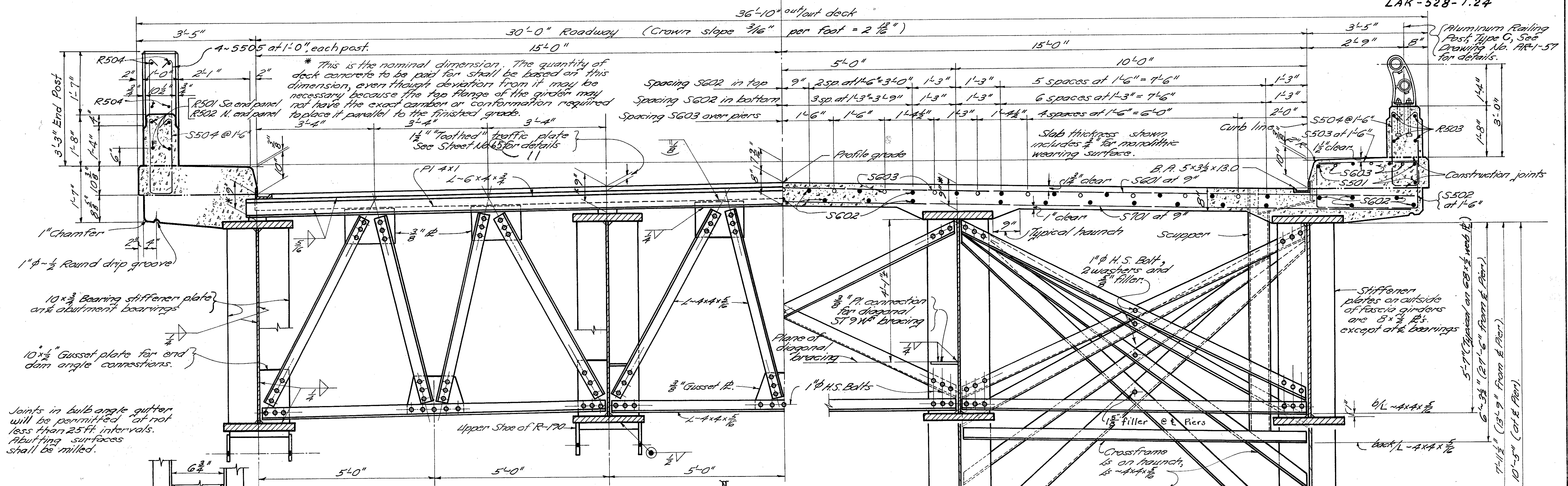


Bridge and Roadway
Symmetrical about ϵ

FED. RD. DIVISION	STATE	PROJECT
2	OHIO	

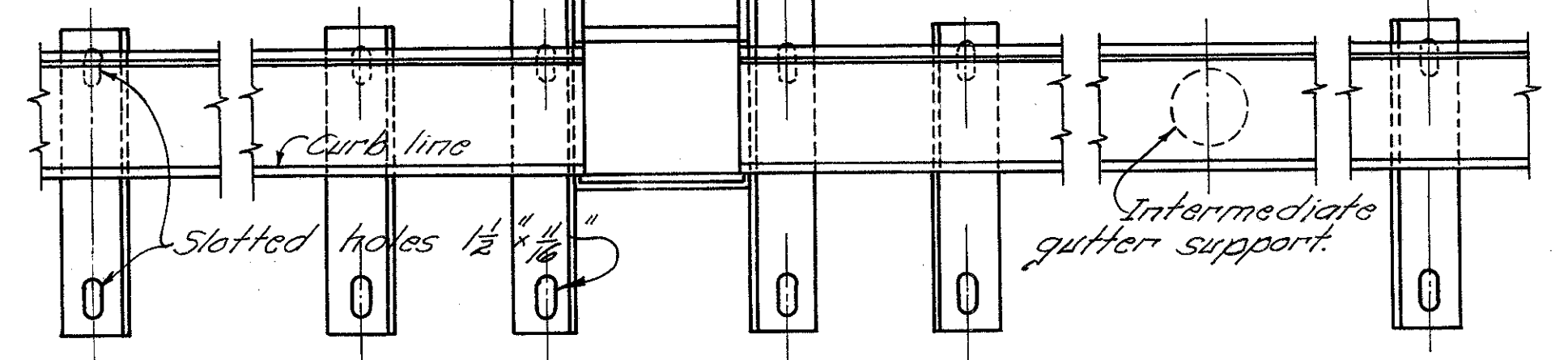
62
70

LAK-528-1.24

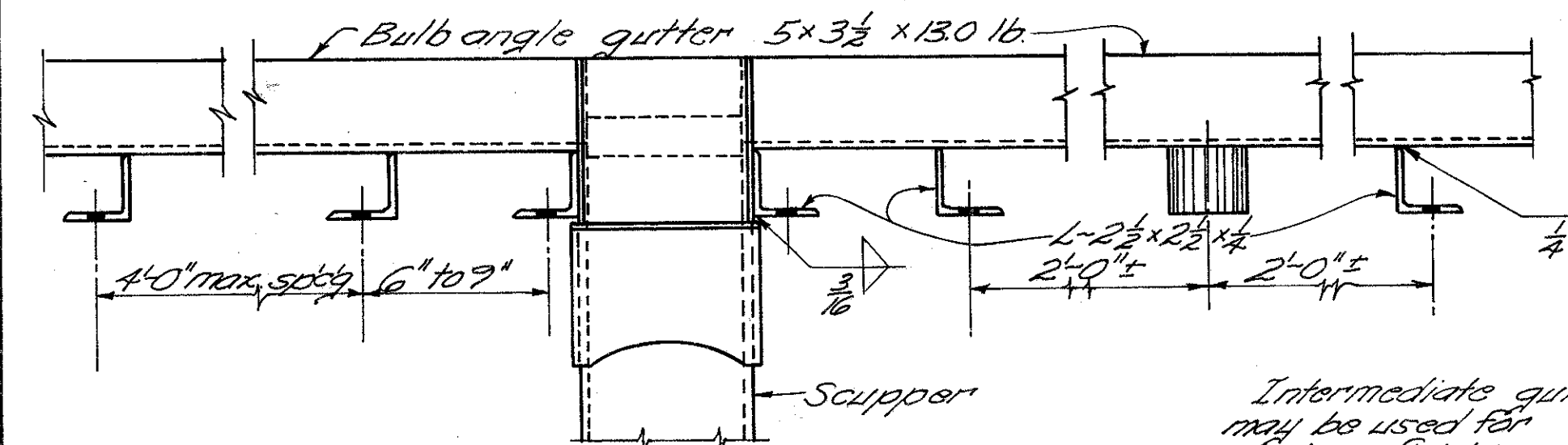


HALF TRANSVERSE ROADWAY SECTION A-A

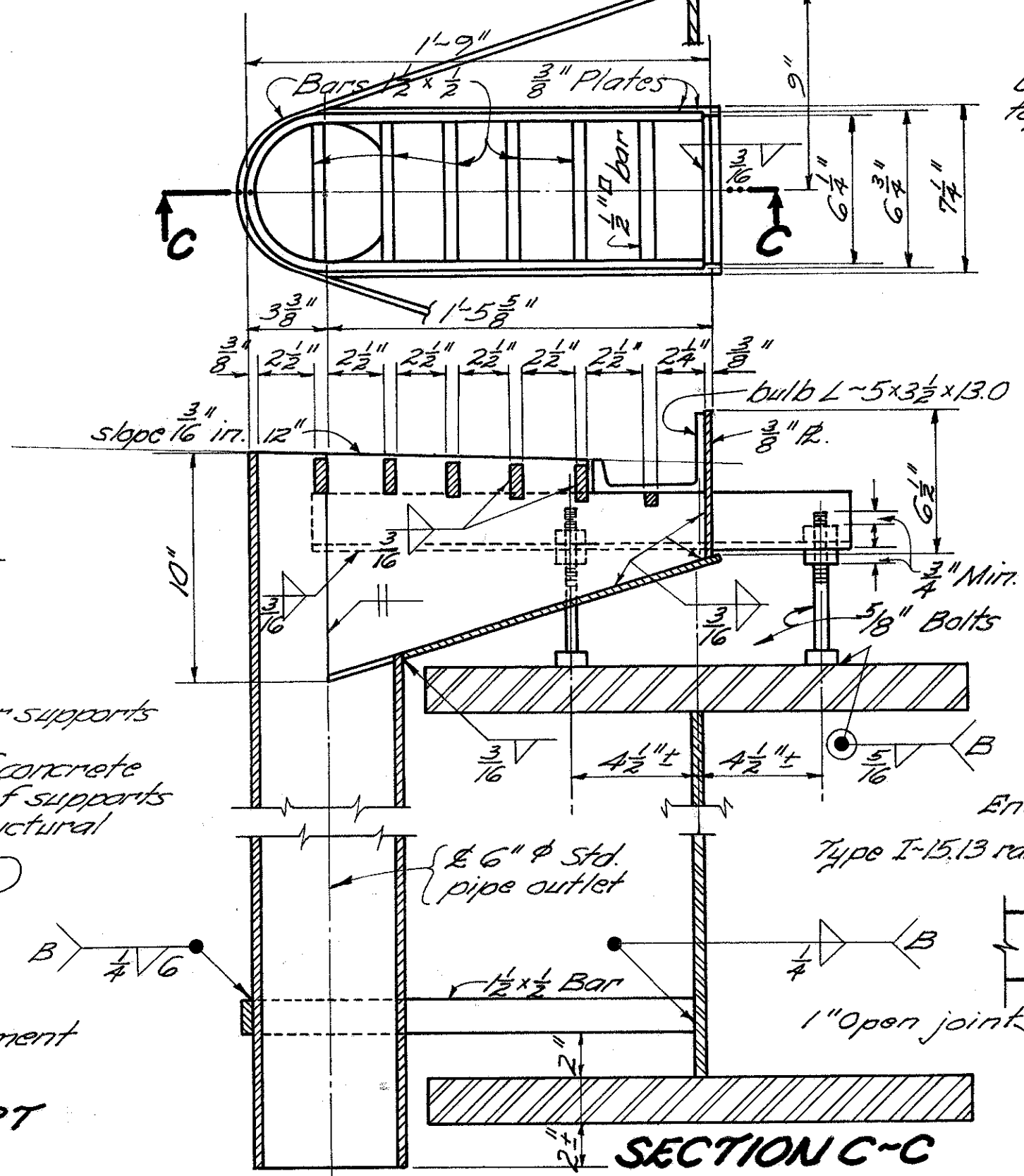
HALF TRANSVERSE ROADWAY SECTION B-B (Typical)



PART PLAN

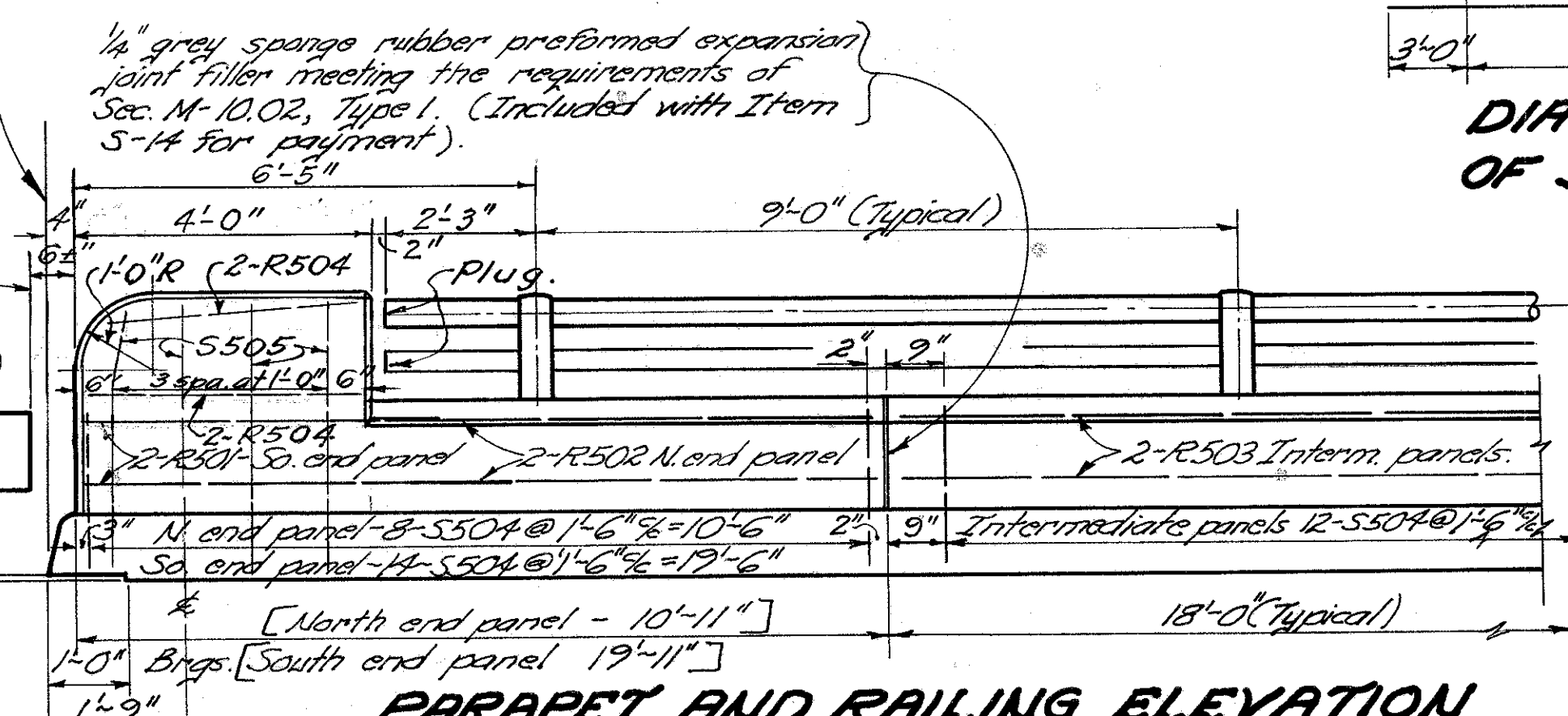


ELEVATION



SECTION C-C

NOTE - SEE "END DAM DETAIL" on Sheet No. 65 for plan of end of curb.



PARAPET AND RAILING ELEVATION

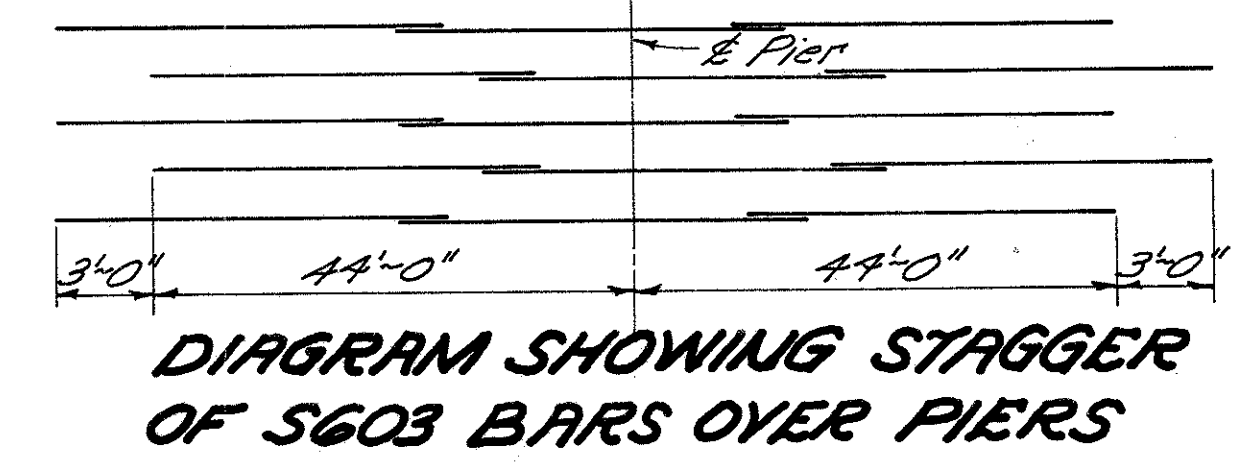
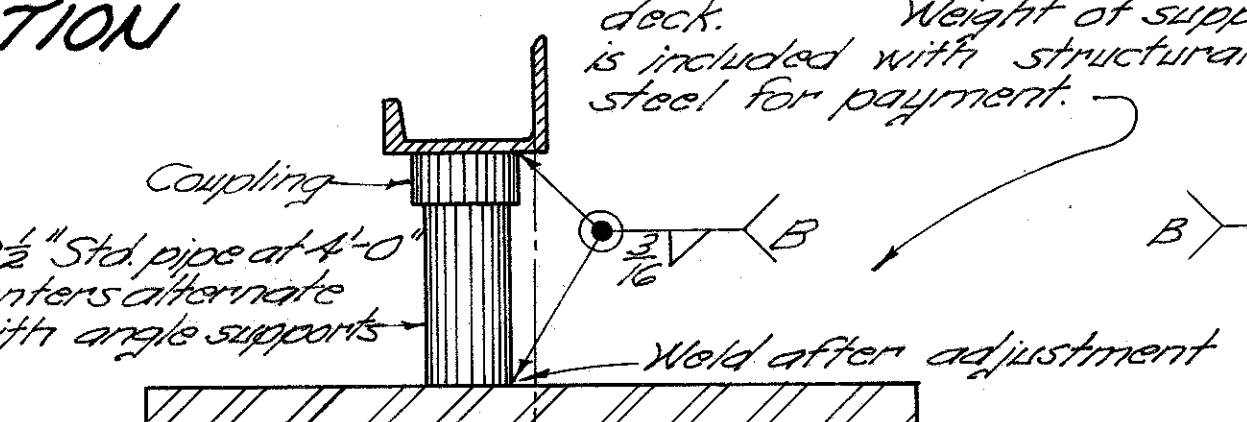


DIAGRAM SHOWING STAGGER OF S603 BARS OVER PIERS

Gutters shall be accurately adjusted for alignment and grade, with allowance for dead load deflection, before concrete is placed.



INTERMEDIATE GUTTER SUPPORT METHOD

STATE OF OHIO DEPARTMENT OF HIGHWAYS DIVISION OF DESIGN AND CONSTRUCTION BUREAU OF BRIDGES					
TRANSVERSE DECK SECTION GUTTER AND SCUPPER DETAILS					
BRIDGE NO. LAK-528-0192 OVER GRAND RIVER					
LAKE COUNTY STA. 37+85.50 TO 47+72.50					
DESIGNED	DRAWN	TRACED	CHECKED	REVIEWED	DATE
KED	KED	Moglan	Def.	BFG	1-9-61