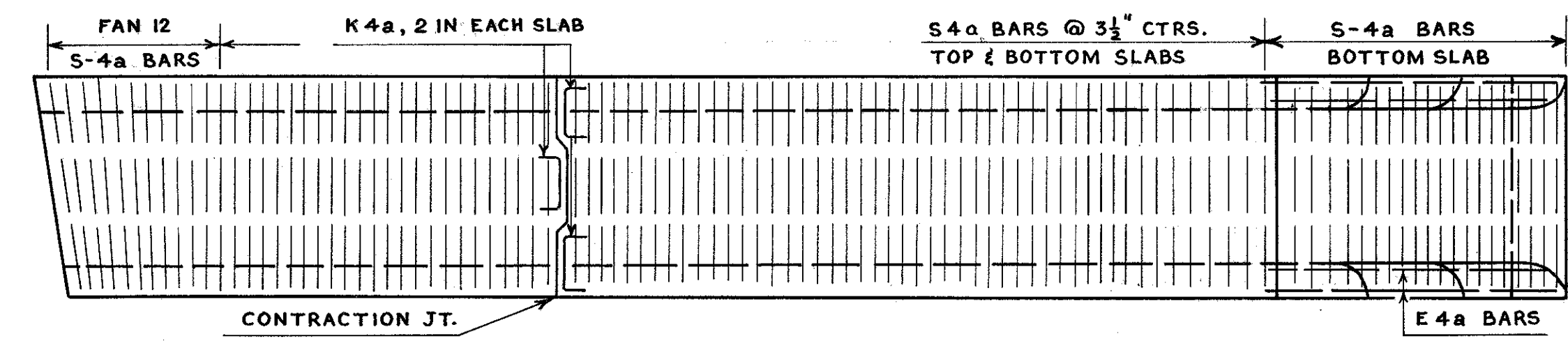
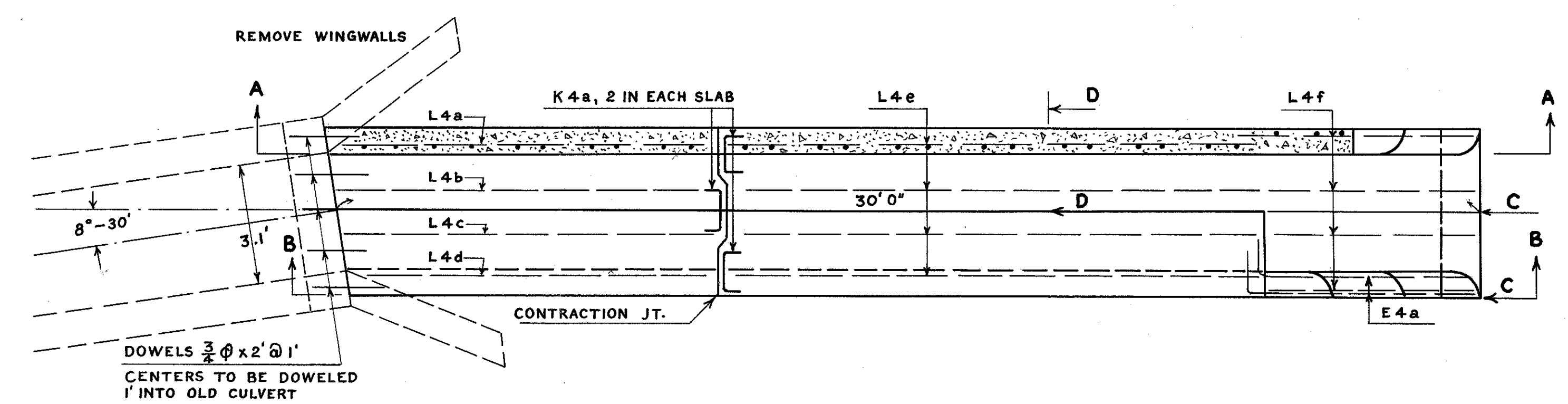


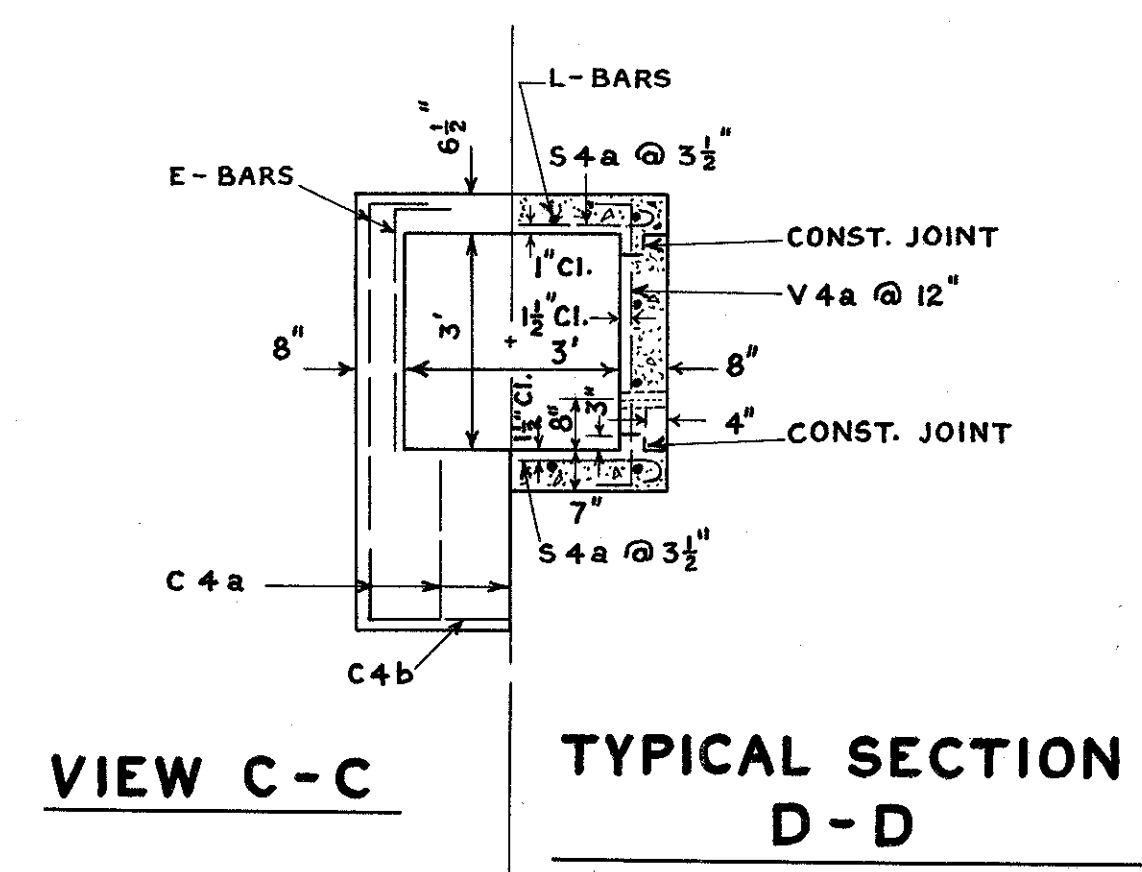
SCALE  $\frac{3}{8}'' = 1' 0''$



PLAN - TOP & BOTTOM SLAB



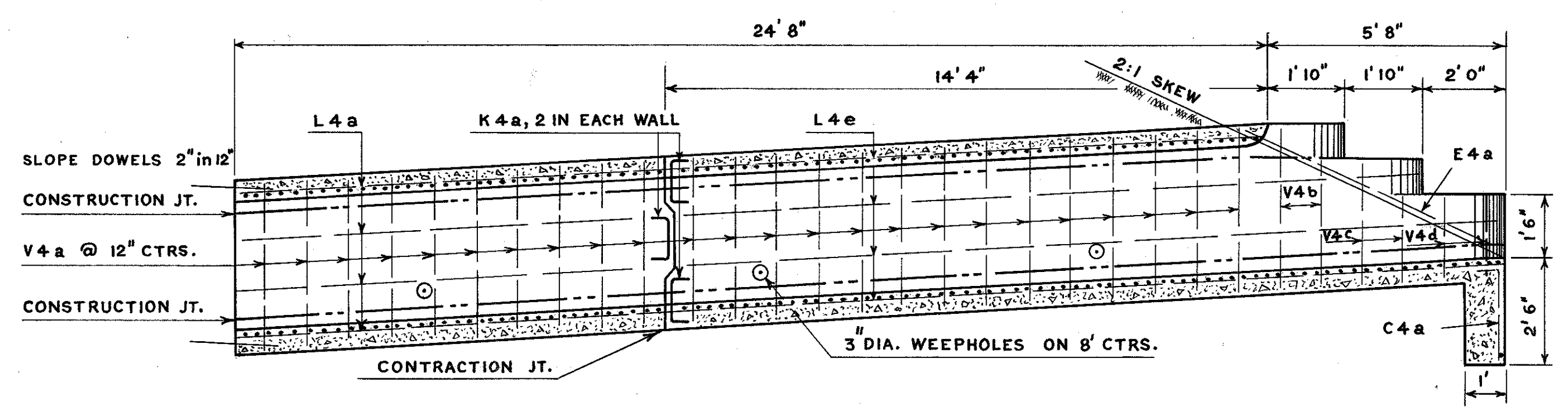
PART PLAN & HORIZONTAL SECTION



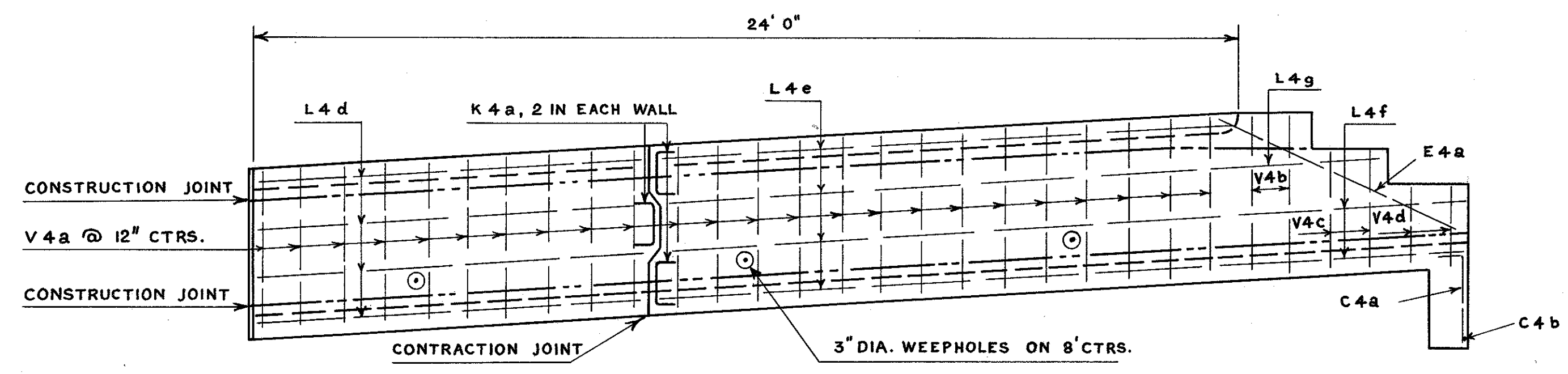
VIEW C-C

TYPICAL SECTION D-D

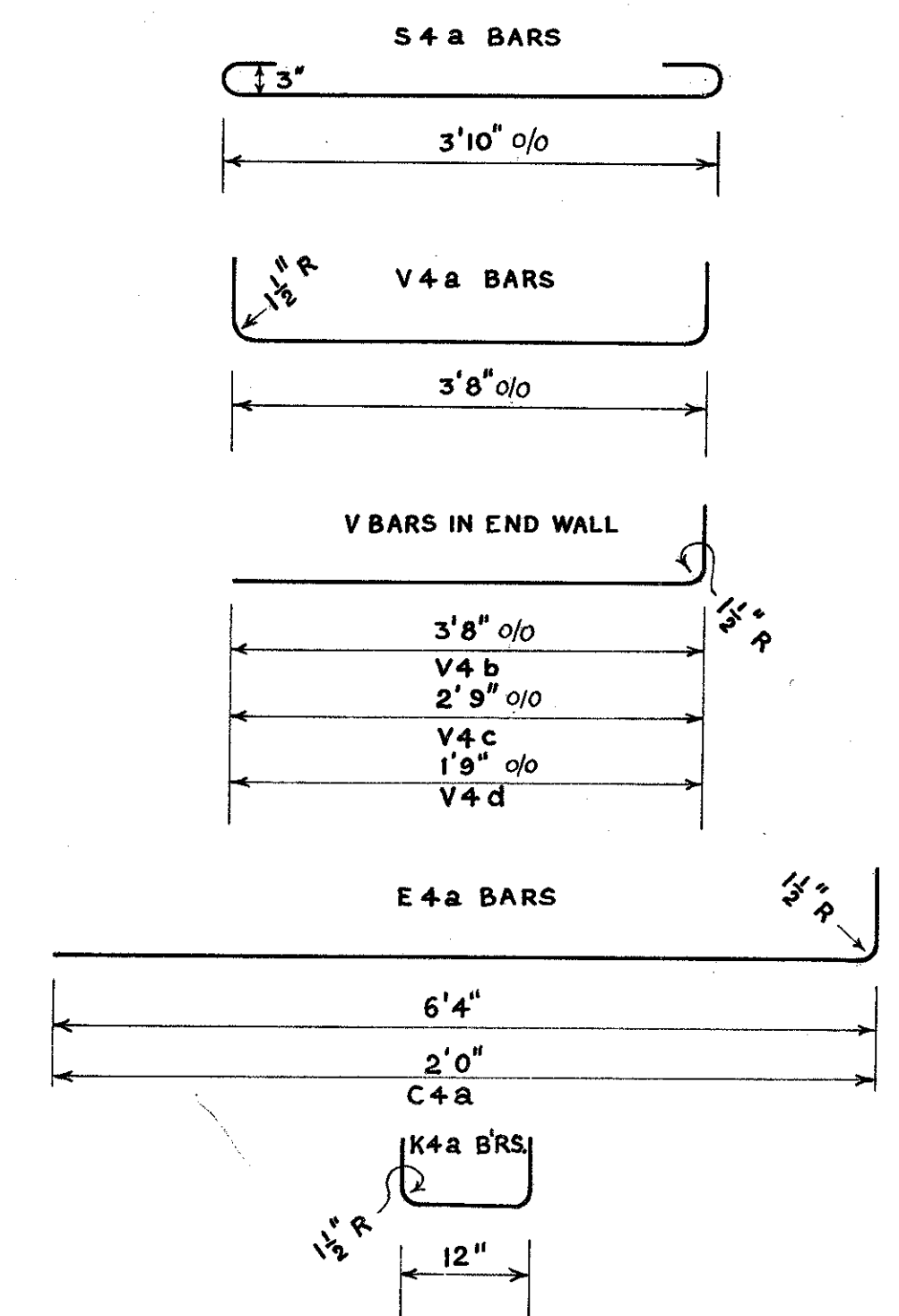
REINFORCING STEEL						
MARK	SIZE	NO	LENGTH	TOTAL FEET	WT LBS	SHAPE
S 4 a	$\frac{1}{2}'' \phi$	186	4' 10"	899	600.53	BENT
V 4 a	$\frac{1}{2}'' \phi$	48	4' 6"	216	144.29	BENT
V 4 b	$\frac{1}{2}'' \phi$	4	4' 1"	16.33	10.91	BENT
V 4 c	$\frac{1}{2}'' \phi$	4	3' 2"	12.67	8.46	BENT
V 4 d	$\frac{1}{2}'' \phi$	4	2' 2"	8.67	5.79	BENT
C 4 a	$\frac{1}{2}'' \phi$	5	2' 5"	12.08	8.07	BENT
C 4 b	$\frac{1}{2}'' \phi$	1	4' 0"	4	2.67	STRAIGHT
E 4 a	$\frac{1}{2}'' \phi$	4	6' 9"	27	18.04	BENT
K 4 a	$\frac{1}{2}'' \phi$	24	1' 10"	44	29.39	BENT
L 4 a	$\frac{1}{2}'' \phi$	4	9' 10"	39.33	26.26	STRAIGHT
L 4 b	$\frac{1}{2}'' \phi$	2	9' 9"	19.50	13.03	STRAIGHT
L 4 c	$\frac{1}{2}'' \phi$	2	9' 6"	19	12.69	STRAIGHT
L 4 d	$\frac{1}{2}'' \phi$	4	9' 3"	37	24.72	STRAIGHT
L 4 e	$\frac{1}{2}'' \phi$	12	13' 9"	165	110.22	STRAIGHT
L 4 f	$\frac{1}{2}'' \phi$	6	6' 8"	40	26.72	STRAIGHT
L 4 g	$\frac{1}{2}'' \phi$	2	4' 8"	9.33	6.23	STRAIGHT
DOWELS	$\frac{3}{4}'' \phi$	16	2' 0"	32	48.06	STRAIGHT
<b>TOTAL:</b>					<b>1096 LBS.</b>	



SECTION A-A



SECTION B-B



SCALE:  $\frac{3}{4}'' = 1' 0''$