

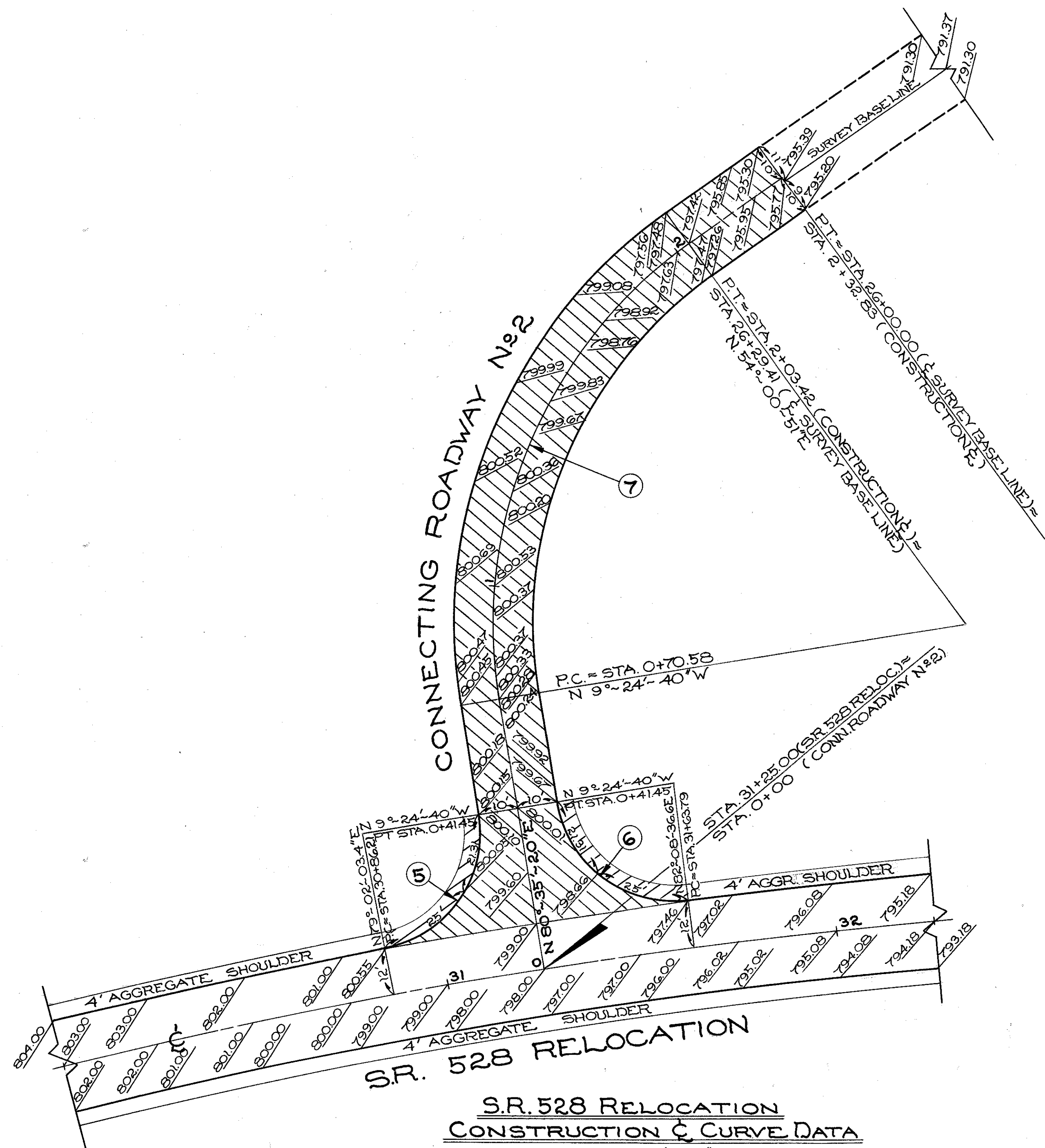
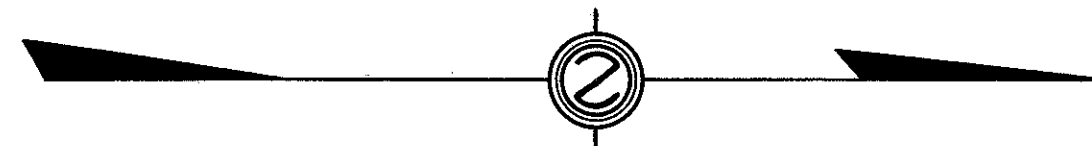
INTERSECTION DETAILS

SCALE: 1" = 20'

FED. RD. DIVISION	STATE	PROJECT
2	OHIO	

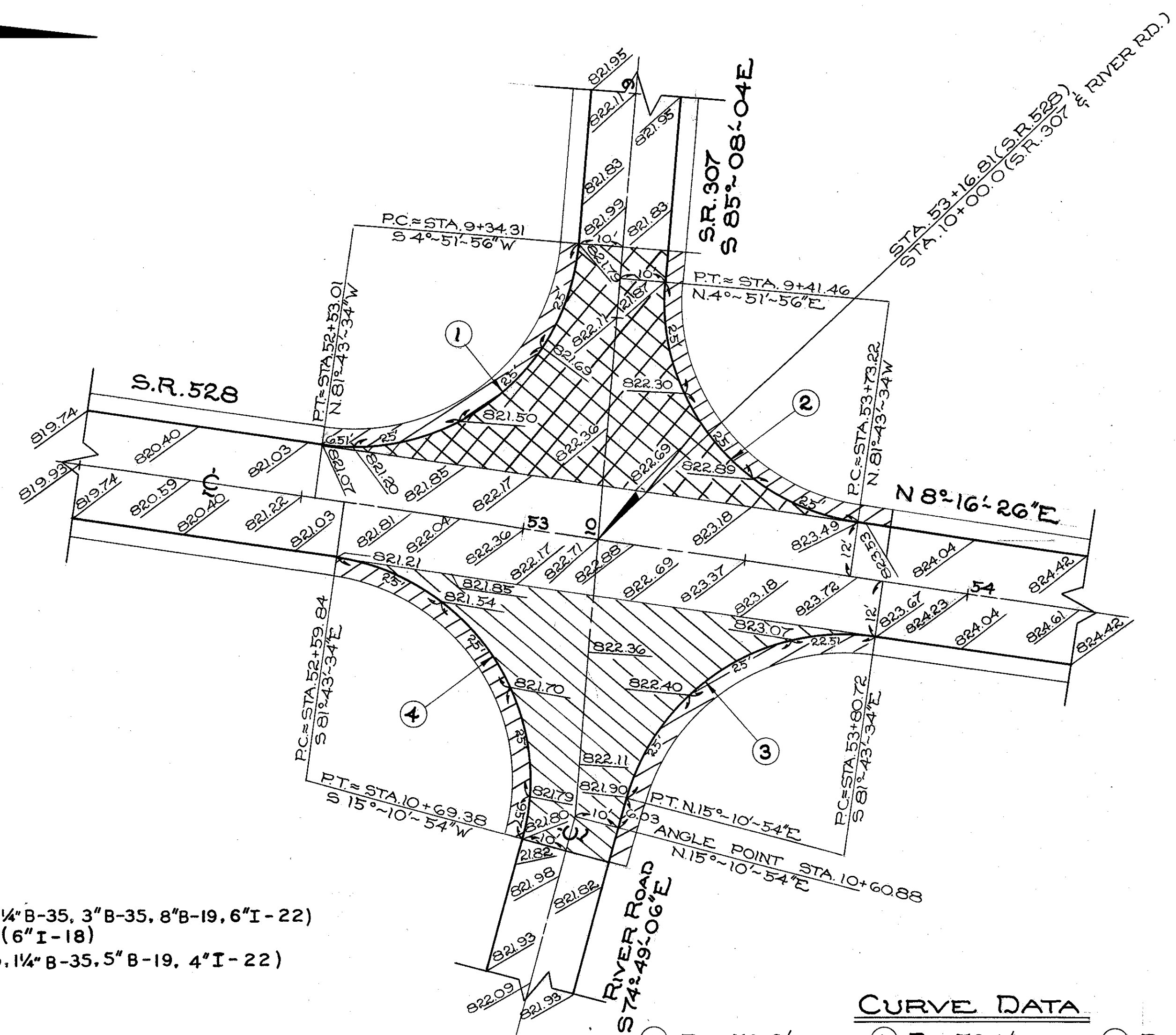
21
70

LAKE COUNTY
Sec. LAK. 528-1.24



**S.R. 528 RELOCATION
CONSTRUCTION C CURVE DATA**

$D_c = 4^{\circ}00'00''$
 $\Delta_c = 33^{\circ}52'35''$
 $R = 1432.40'$
 $L_c = 846.91'$
 $T_c = 436.24'$
 $E_c = 64.96'$
 $Ch_c = 834.63'$
 $T_s = 648.50'$
 $E_s = 102.52'$



LEGEND

- NEW PAVEMENT (1 1/4" T-35, 1 1/4" B-35, 3" B-35, 8" B-19, 6" I-22)
- AGGREGATE SHOULDERS (6" I-18)
- NEW PAVEMENT (1 1/4" T-35, 1 1/4" B-35, 5" B-19, 4" I-22)

CURVE DATA

- ① R = 50.0'
 $\Delta = 93^{\circ}24'30''$
 $D = 114^{\circ}35'28''$
 $T = 53.066'$
 $L = 81.512'$
 $Ch = 72.732'$
- ② R = 50.0'
 $\Delta = 86^{\circ}35'30''$
 $D = 114^{\circ}35'28''$
 $T = 47.111'$
 $L = 75.565'$
 $Ch = 68.576'$
- ③ R = 50.0'
 $\Delta = 83^{\circ}05'32''$
 $D = 114^{\circ}35'28''$
 $T = 44.308'$
 $L = 72.512'$
 $Ch = 66.316'$
- ④ R = 50.0'
 $\Delta = 96^{\circ}54'28''$
 $D = 114^{\circ}35'28''$
 $T = 56.423'$
 $L = 84.568'$
 $Ch = 74.844'$
- ⑤ R = 30'
 $\Delta = 88^{\circ}26'43.4''$
 $D = 190^{\circ}05'05.5''$
 $T = 29.20'$
 $L = 46.31'$
 $Ch = 41.85'$
- ⑥ R = 30'
 $\Delta = 88^{\circ}26'43.4''$
 $D = 190^{\circ}05'05.5''$
 $T = 29.20'$
 $L = 46.31'$
 $Ch = 41.85'$
- ⑦ R = 120'
 $\Delta = 63^{\circ}25'31''$
 $D = 47^{\circ}44'47.4''$
 $T = 74.15'$
 $L = 132.84'$
 $Ch = 126.16'$

EXTRA AREA QUANTITIES

LOCATION	T-35 1 1/4" ASPH. CONC. SURF. COURSE	B-35 1 1/4" ASPH. CONC. LEVEL COURSE	B-35 3" ASPH. CONC. BASE COURSE	B-19 8" Agg. BASE COURSE	I-22 6" SUBBASE	I-18 6" STABILIZED CRUSHED AGG.	T-30 BIT PRIME COAT	B-19 5" Agg. BASE COURSE	I-22 4" SUBBASE
	CU. YDS.	CU. YDS.	CU. YDS.	CU. YDS.	CU. YDS.	CU. YDS.	GAL.	CU. YDS.	CU. YDS.
CONN. RWY. No 2	18	18				7	212	77	65
S.R. 307	8	8	20	64	44	13	96		
RIVER ROAD	9	9				13	99	36	30
TOTAL	35	35	20	64	44	33	407	113	95