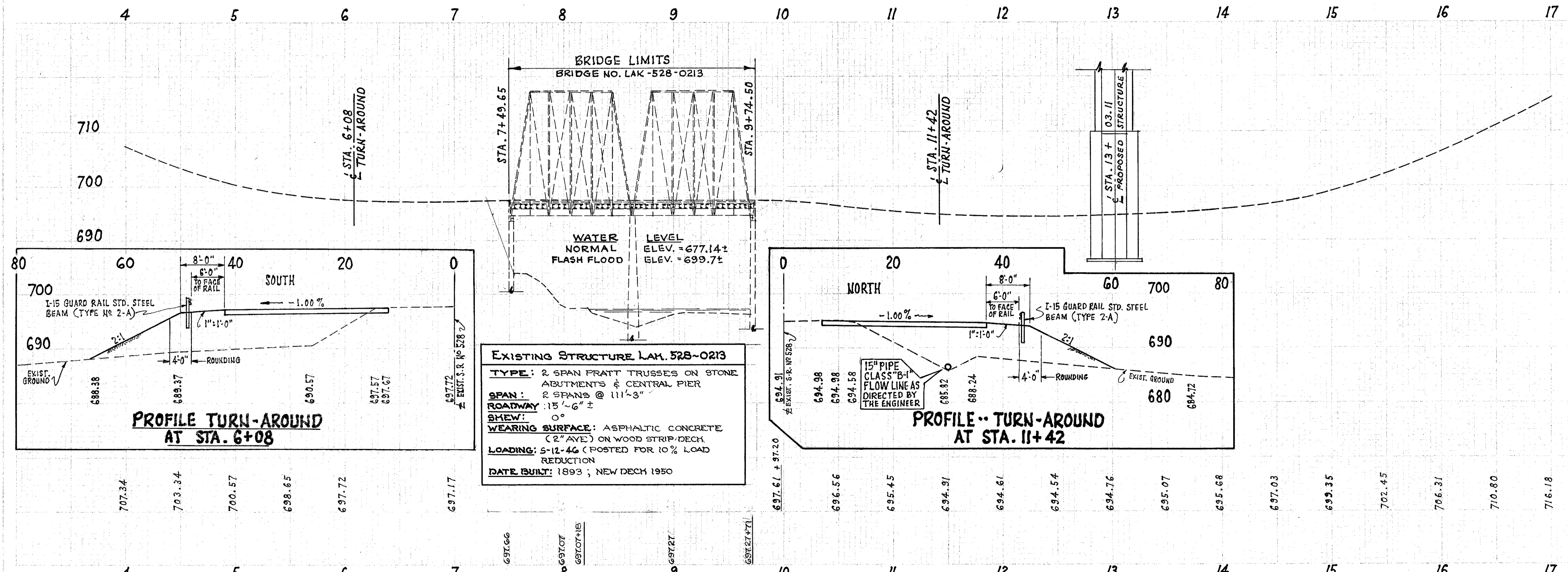
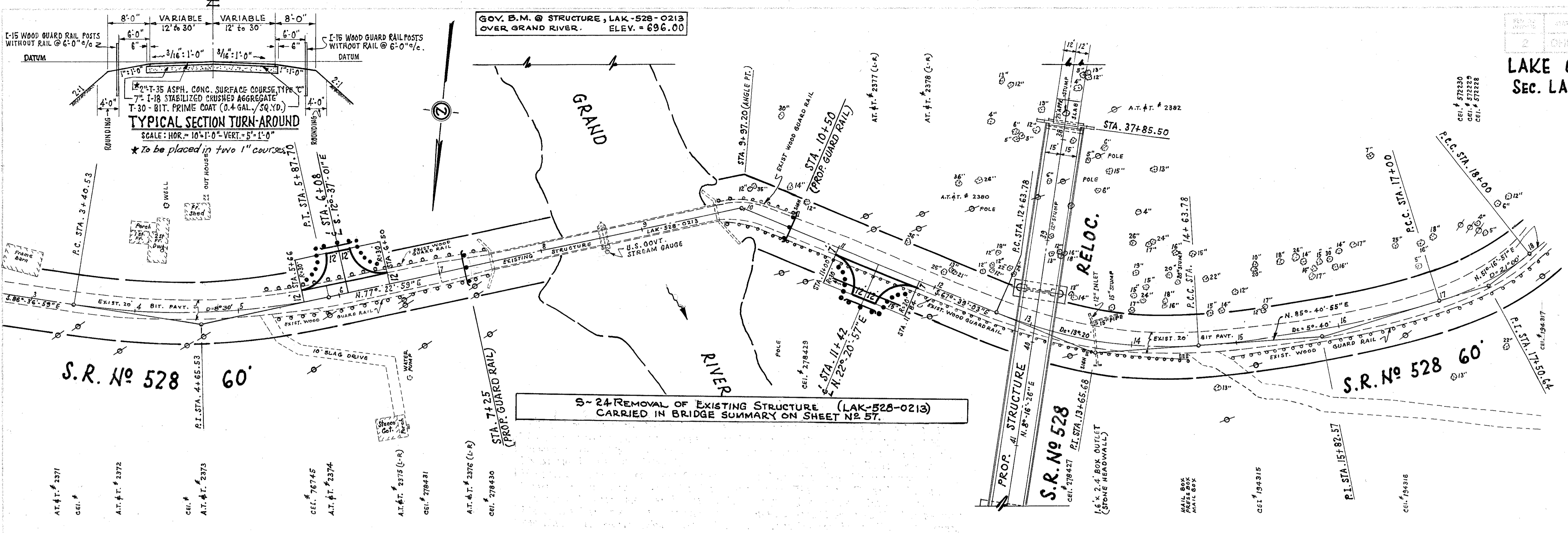


LAKE COUNTY
 Sec. LAK-528-1.24



EXISTING STRUCTURE LAK. 528-0213
TYPE: 2 SPAN PRATT TRUSSES ON STONE ABUTMENTS & CENTRAL PIER
SPAN: 2 SPANS @ 111'-3"
SHED: 0°
WEARING SURFACE: ASPHALTIC CONCRETE (2" AVE) ON WOOD STRIP DECK
LOADING: 5-12-46 (POSTED FOR 10% LOAD REDUCTION)
DATE BUILT: 1893; NEW DECK 1950

TURN-AROUND QUANTITIES		I-15 GUARD RAIL		I-18 GUARD RAIL		I-35 GUARD RAIL		T-30 GUARD RAIL		T-35 GUARD RAIL		T-35 ASPH. CONC. SURFACE COURSE		T-35 BIT. PRIME COAT		T-35 STABILIZED TYPE AGGREGATE		T-35 ASPH. CONC. SURFACE COURSE		T-35 BIT. PRIME COAT		T-35 STABILIZED TYPE AGGREGATE		
Station	FROM	TO	CU. YDS.	CU. YDS.	CU. YDS.	CU. YDS.	CU. YDS.	CU. YDS.	CU. YDS.	CU. YDS.	CU. YDS.	CU. YDS.	CU. YDS.	CU. YDS.	CU. YDS.	CU. YDS.	CU. YDS.	CU. YDS.	CU. YDS.	CU. YDS.	CU. YDS.	CU. YDS.	CU. YDS.	
	5+66	6+50	7	7	7.3	25	12	75	12	75	12	75	12	75	12	75	12	75	12	75	12	75	12	75
	6+50	7+25	7	7	7.3	25	12	75	12	75	12	75	12	75	12	75	12	75	12	75	12	75	12	75
	7+25	8+00	7	7	7.3	25	12	75	12	75	12	75	12	75	12	75	12	75	12	75	12	75	12	75
	8+00	8+75	7	7	7.3	25	12	75	12	75	12	75	12	75	12	75	12	75	12	75	12	75	12	75
	8+75	9+50	7	7	7.3	25	12	75	12	75	12	75	12	75	12	75	12	75	12	75	12	75	12	75
	9+50	10+25	7	7	7.3	25	12	75	12	75	12	75	12	75	12	75	12	75	12	75	12	75	12	75
	10+25	11+00	7	7	7.3	25	12	75	12	75	12	75	12	75	12	75	12	75	12	75	12	75	12	75
	11+00	11+89	7	7	7.3	25	12	75	12	75	12	75	12	75	12	75	12	75	12	75	12	75	12	75
	11+89	12+64	7	7	7.3	25	12	75	12	75	12	75	12	75	12	75	12	75	12	75	12	75	12	75
	12+64	13+39	7	7	7.3	25	12	75	12	75	12	75	12	75	12	75	12	75	12	75	12	75	12	75
	13+39	14+14	7	7	7.3	25	12	75	12	75	12	75	12	75	12	75	12	75	12	75	12	75	12	75
	14+14	14+89	7	7	7.3	25	12	75	12	75	12	75	12	75	12	75	12	75	12	75	12	75	12	75
	14+89	15+64	7	7	7.3	25	12	75	12	75	12	75	12	75	12	75	12	75	12	75	12	75	12	75
	15+64	16+39	7	7	7.3	25	12	75	12	75	12	75	12	75	12	75	12	75	12	75	12	75	12	75
	16+39	17+14	7	7	7.3	25	12	75	12	75	12	75	12	75	12	75	12	75	12	75	12	75	12	75
	17+14	17+00	7	7	7.3	25	12	75	12	75	12	75	12	75	12	75	12	75	12	75	12	75	12	75
TOTAL			124	19	13.6	105.2	14.6	100	24	150	24	150	24	150	24	150	24	150	24	150	24	150	24	150

PLAN & PROFILE -- EXISTING S.R. No 528 (INCLUDING EXIST. STRUCTURE) AND PROPOSED TURN-AROUNDS -- STA. 4+00 to STA. 17+00