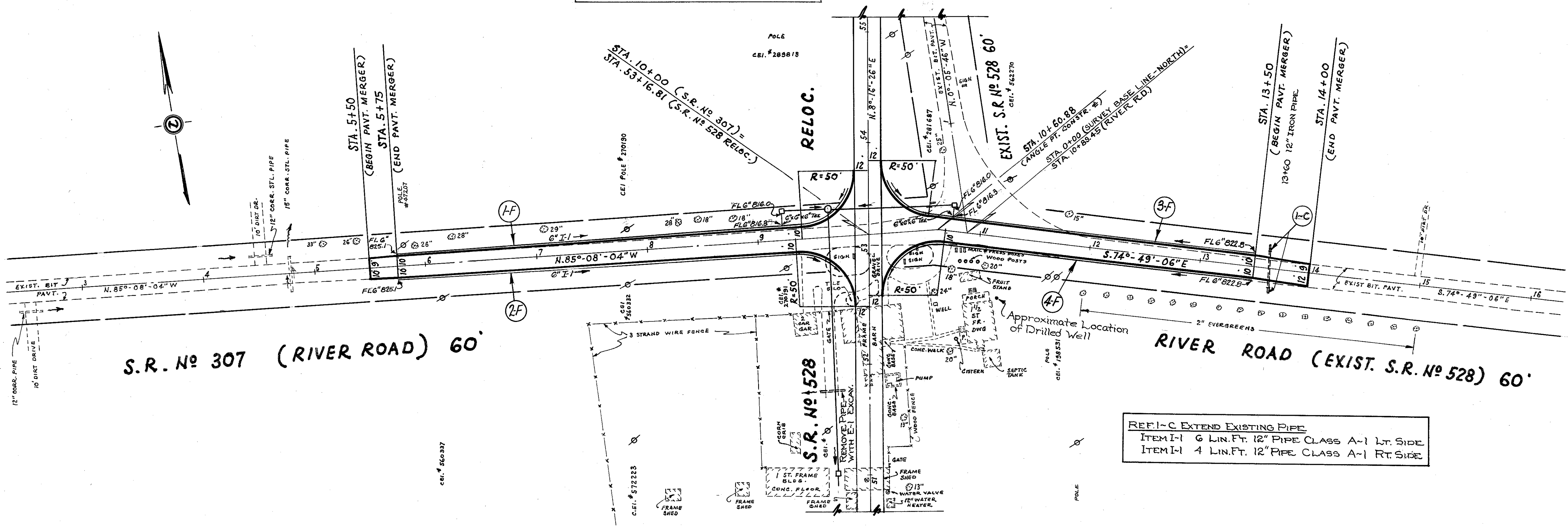
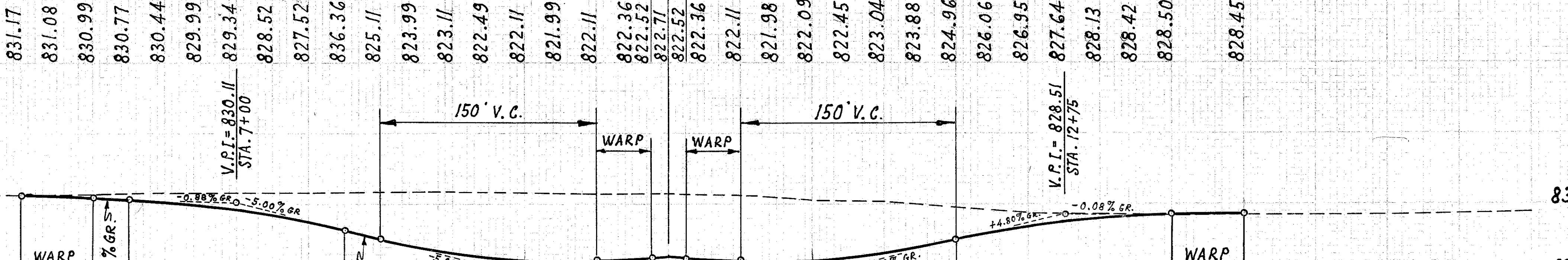


B.M. #9 - D.H., N.E. Cor. Lower Shop, STA. 52+51  
 S.R. #528 Reloc. (34' Rt. of C. ELEV. = 830.944)



REF. I-C EXTEND EXISTING PIPE  
 ITEM I-1 6 LIN. FT. 12" PIPE CLASS A-1 LT. SIDE  
 ITEM I-1 4 LIN. FT. 12" PIPE CLASS A-1 RT. SIDE

3 4 5 6 7 8 9 10 11 12 13 14 15 16



UNDERDRAINS					
REF. No.	LOCATION	STATION		SIDE L OR R	I-1 6" CLASS I-3 UNDERDRAINS LIN. FT.
		FROM	TO		
1-F	SR No	5+75	9+41.5	L	371
2-F	307	5+75	9+34.3	R	359
3-F	RIVER	10+55 ±	13+50	L	303
4-F	ROAD	10+69.4	13+50	R	281
TOTAL					1320

EXCAVATION 5068 CU.YDS.  
 EMBANKMENT 4 CU.YDS.  
 EMB. + 18% 5 CU.YDS.  
 SEED. & PROT. 2309 SQ.YDS.

EXCAVATION 3102 CU.YDS.  
 EMBANKMENT 20 CU.YDS.  
 EMB. + 18% 24 CU.YDS.  
 SEED. & PROT. 1715 SQ.YDS.

PLAN & PROFILE ... RIVER ROAD & S.R. #307 ... STA. 3+00 to STA. 16+00