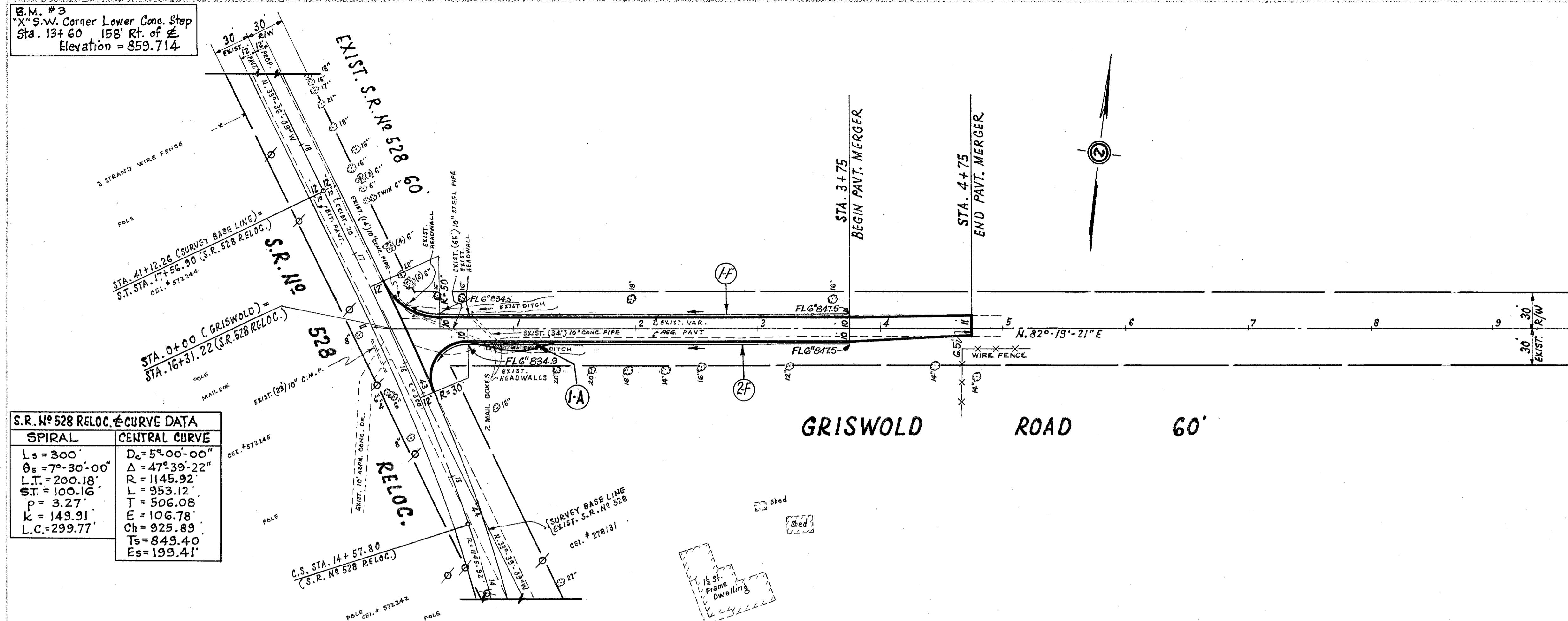


B.M. #3
 "X" S.W. Corner Lower Conc. Step
 Sta. 13+60 158' Rt. of C
 Elevation = 859.714

REF. NO.	STATE	PROJECT	SHEET NO.
2	OHIO		17

17
70

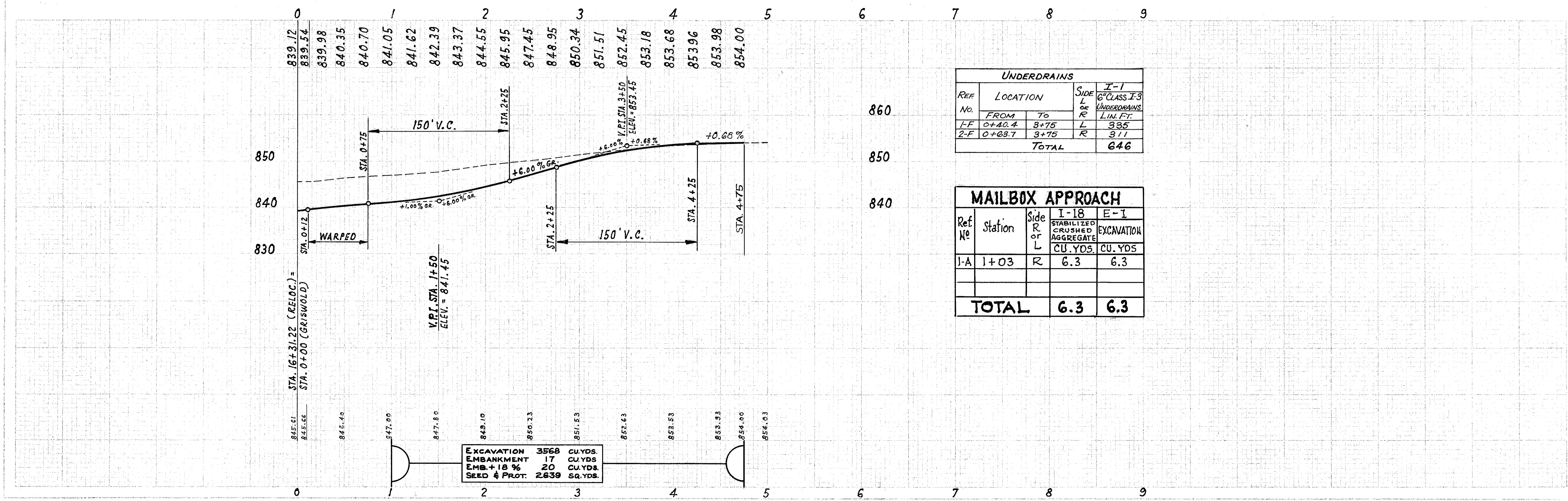
LAKE COUNTY
 SEC. LAK - 528-1.24



S.R. No 528 RELOC. CURVE DATA

SPIRAL	CENTRAL CURVE
$L_s = 300'$	$D_c = 5^\circ 00' 00''$
$\theta_s = 7^\circ 30' 00''$	$\Delta = 47^\circ 39' 22''$
$L.T. = 200.18'$	$R = 1145.92'$
$S.T. = 100.16'$	$L = 953.12'$
$p = 3.27'$	$T = 506.08'$
$k = 149.91'$	$E = 106.78'$
$L.C. = 299.77'$	$Ch = 925.89'$
	$Ts = 849.40'$
	$Es = 199.41'$

GRISWOLD ROAD 60'



UNDERDRAINS

REF. No.	LOCATION		SIDE L or R	I-1 6" CLASS I-3 UNDERDRAINS L.I.N. FT.
	FROM	TO		
1-F	0+40.4	3+75	L	335
2-F	0+63.7	3+75	R	311
TOTAL				646

MAILBOX APPROACH

Ref. No.	Station	Side R or L	I-18	E-1
			STABILIZED CRUSHED AGGREGATE CU. YDS.	EXCAVATION CU. YDS.
1-A	1+03	R	6.3	6.3
TOTAL			6.3	6.3

PLAN & PROFILE ... GRISWOLD ROAD ... STA. 0+00 to STA. 9+00