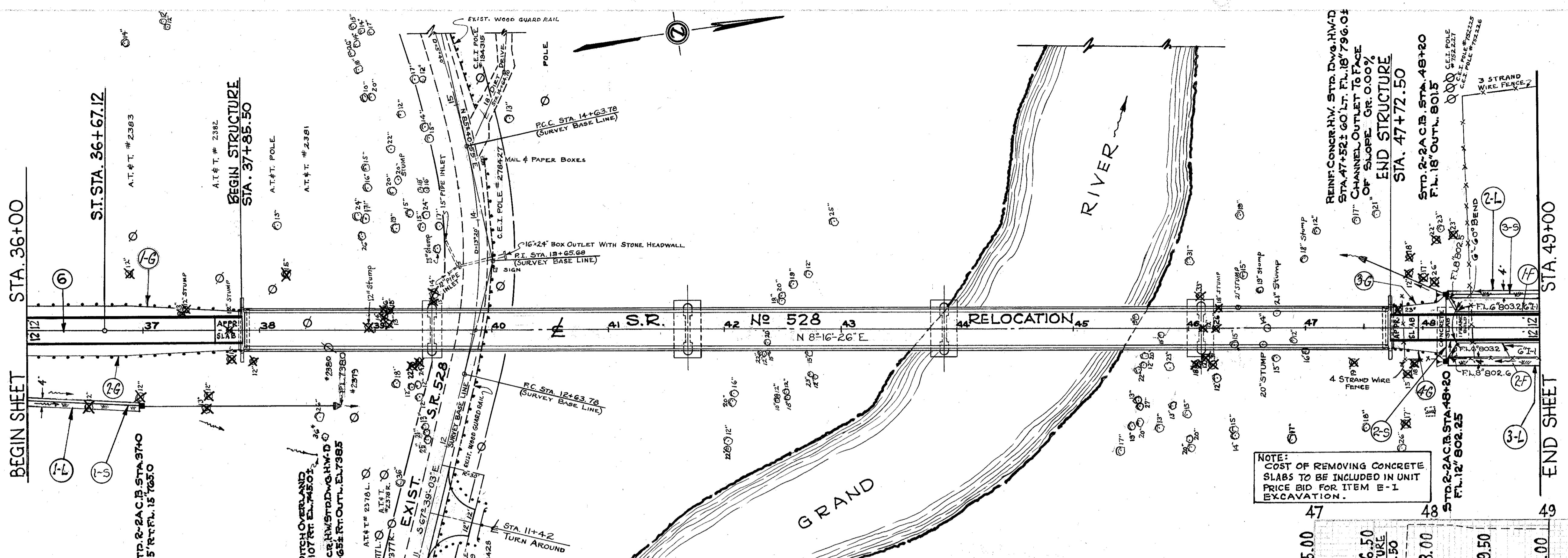


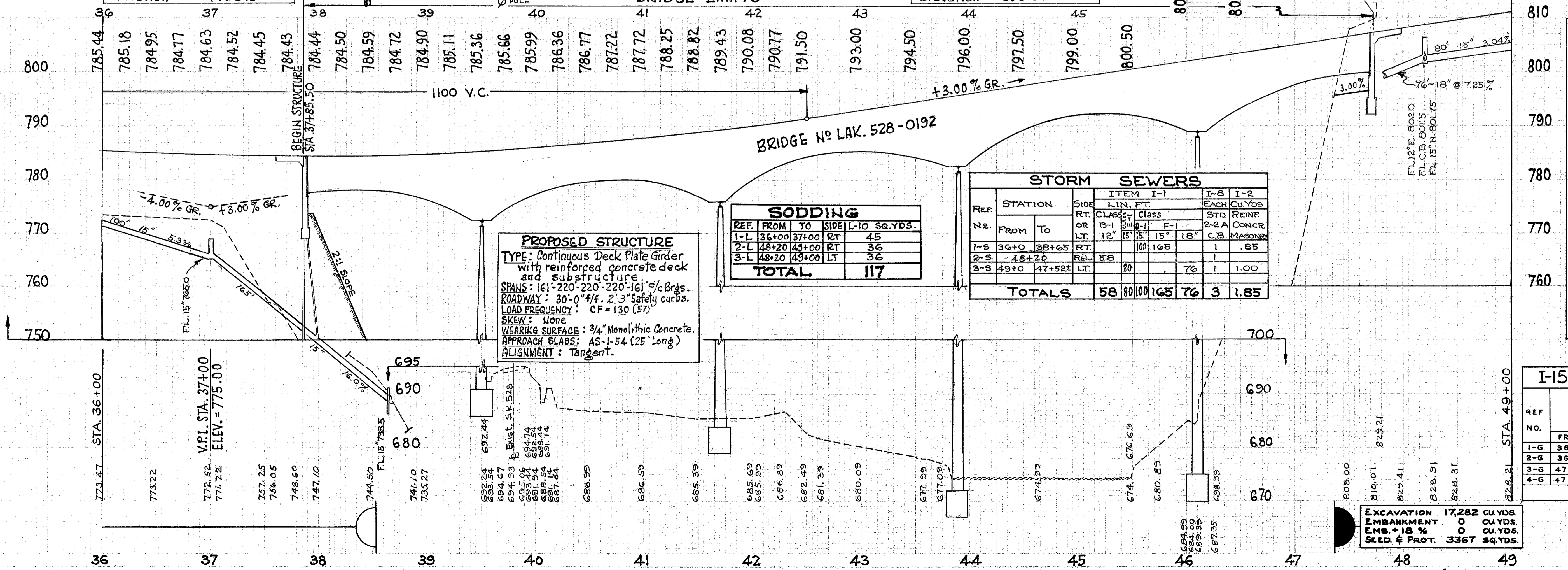
**⑥ SPIRAL DATA**

$L_s = 200$   
 $\theta_s = 40.00$   
 $L.T. = 133.37$   
 $S.T. = 66.70$   
 $P = 1.16$   
 $K = 99.98$   
 $L.C. = 199.96$



B.M. # 7  
S.E. Cor. Conc. Walk - K.L. Klusen Res.  
W. Side S.R. 528 Sta. 36+00 - 505' Lt of  
Elevation = 742.573

B.M. # 8 GOV. B.M.  
N.W. Cor. Grand River Bridge  
Sta. 39+23 - 316' Rt. of New &  
Elevation = 696.000



**UNDERDRAINS**

REF. NO.	LOCATION	SIDE		CLASS	CLASS	L	R	L	R	L	R	L	R	L	R
		I-1	I-2												
1-I	36+00	RT	LT	6"	CLASS I-18	37+75	37+75	4B	4B	60	60	10	10	10	10
2-I	48+20	RT	LT	6"	CLASS I-18	49+00	49+00	4B	4B	60	60	10	10	10	10
<b>TOTALS</b>						<b>160</b>	<b>20</b>			<b>128</b>					

**I-15 GUARD RAIL**

REF. NO.	LOCATION		SIDE	STANDARD TYPE
	FROM	TO		
1-G	36+00	37+84.75	L	184.5
2-G	36+00	37+84.75	R	184.5
3-G	47+73.25	48+10+	L	37.5
4-G	47+73.25	48+10+	R	37.5
<b>TOTAL</b>				<b>444.0</b>

EXCAVATION 17,282 CU. YDS.  
EMBANKMENT 0 CU. YDS.  
EMB + 15% 0 CU. YDS.  
SEED & PROT. 3367 SQ. YDS.