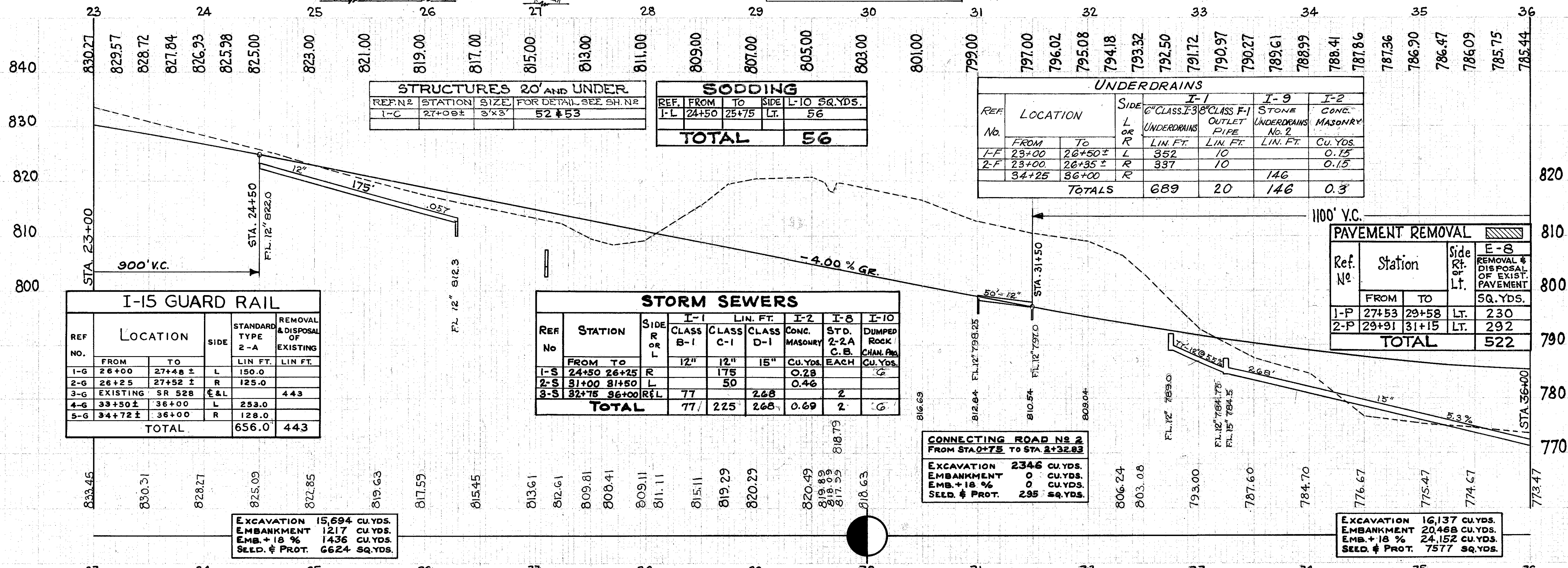
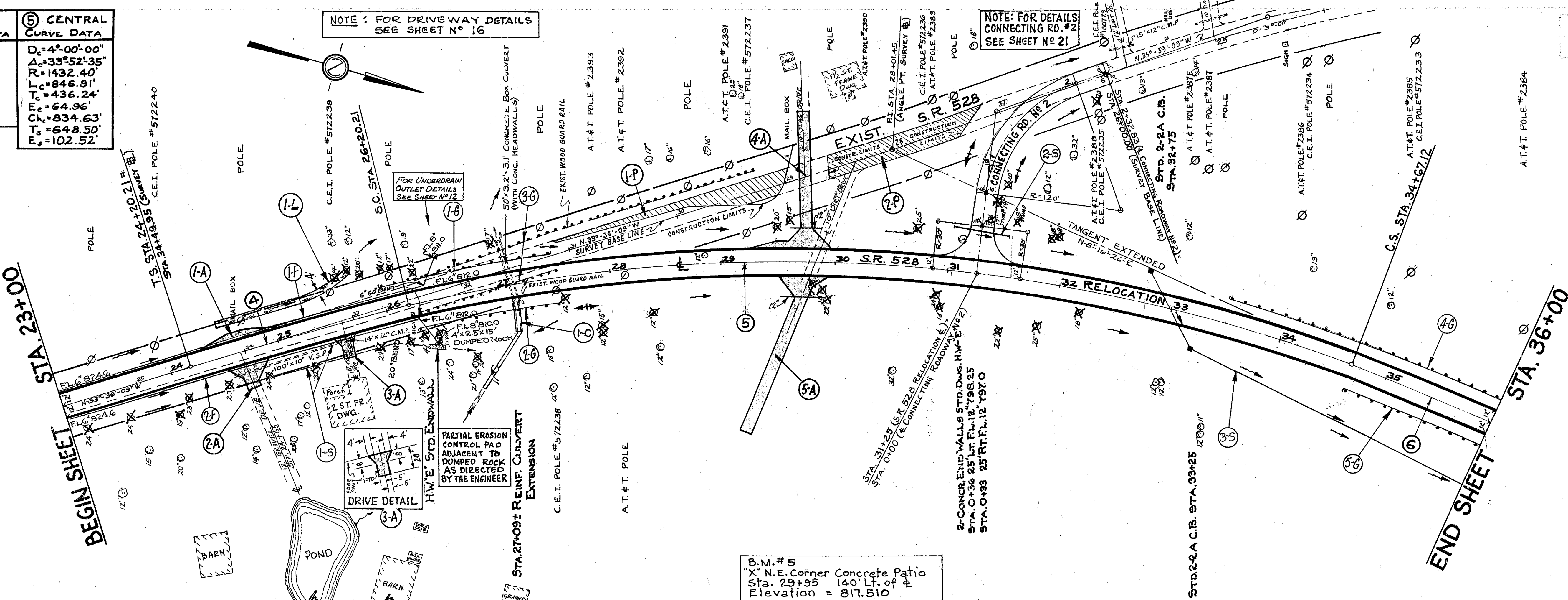


④ SPIRAL DATA		⑤ CENTRAL CURVE DATA	
Ls = 200'	Ds = 4°-00'-00"	Dc = 4°-00'-00"	
Os = 4°-00'	Δs = 33°-52'-35"	Δc = 33°-52'-35"	
L.T. = 33.37'	R = 143.40'	R = 143.40'	
S.T. = 66.70'	Lc = 846.91'	Lc = 846.91'	
p = 1.16'	Fc = 64.96'	Fc = 64.96'	
K = 99.98'	Cc = 834.63'	Cc = 834.63'	
L.C. = 199.96'	Fs = 648.50'	Fs = 648.50'	
	Lc = 102.52'	Lc = 102.52'	

NOTE: FOR DRIVEWAY DETAILS SEE SHEET NO 16

NOTE: FOR DETAILS CONNECTING RD. #2 SEE SHEET NO 21



REF. NO.	STATION	SIZE	FOR DETAIL SEE SH. NO.
I-C	27+09±	3'x3'	52 & 53

REF. NO.	FROM	TO	SIDE	L-10	SQ. YDS.
I-L	24+50	25+75	LT.	56	
<b>TOTAL</b>					<b>56</b>

REF. NO.	LOCATION	SIDE	CLASS			
			I-1	I-2	I-9	I-2
I-F	23+00	L	352	10		0.15
R-F	23+00	R	337	10		0.15
	34+25	R			146	0.15
<b>TOTALS</b>			<b>689</b>	<b>20</b>	<b>146</b>	<b>0.3</b>

Ref. No.	Station	Side	EX. CAV.	EM. BANK. + 18% AGG.	STABILIZED PORTLAND CEMENT CONCRETE	REMOVAL & DISPOSAL OF EXIST. PAVEMENT	
I-P	27+53	LT.	230				
2-P	29+91	LT.	292				
<b>TOTAL</b>							<b>522</b>

REF. NO.	LOCATION		SIDE	STANDARD TYPE		REMOVAL & DISPOSAL OF EXISTING	
	FROM	TO		LIN. FT.	LIN. FT.		
1-G	26+00	27+48 ±	L	150.0			
2-G	26+25	27+52 ±	R	125.0			
3-G	EXISTING	SR 528	E&L			443	
4-G	33+50 ±	36+00	L	253.0			
5-G	34+72 ±	36+00	R	128.0			
<b>TOTAL</b>						<b>656.0</b>	<b>443</b>

REF. NO.	STATION	SIDE	CLASS			CONC. MASONRY	STD. 2-2A C.E.	DUMPED ROCK CHAN. PIP.
			I-1	I-2	I-8			
I-S	24+50	R	12"	12"	15"	0.28	0	6
2-S	31+00	L	77	50		0.46		
3-S	32+75	R			268		2	
<b>TOTAL</b>			<b>77</b>	<b>225</b>	<b>268</b>	<b>0.69</b>	<b>2</b>	<b>6</b>

EXCAVATION	2346	CU. YDS.
EMBANKMENT	0	CU. YDS.
EMB. + 18 %	0	CU. YDS.
SEED. & PROT.	295	SQ. YDS.

Ref. No.	Station	Side	APPROX. GRADE	WIDTH	LENGTH	I-18		I-1		E-12	
						EX. CAV.	EM. BANK. + 18% AGG.	EX. CAV.	EM. BANK. + 18% AGG.	PIPE REMOVED	CONCRETE
I-A	24+65	L	1	1	1	3.0	6.2				
2-A	24+65	R	1	12	1	13.0	12.6			100	14
3-A	25+58	R	1	20	10	5.0		26.0			
4-A	29+76	L	1	10	18.0	300.0	37.3		28		
5-A	29+83	R	1	150	10	1904.0	43.0		38		
<b>TOTAL</b>						<b>1725.0</b>	<b>102.1</b>	<b>26.0</b>	<b>66</b>	<b>114</b>	