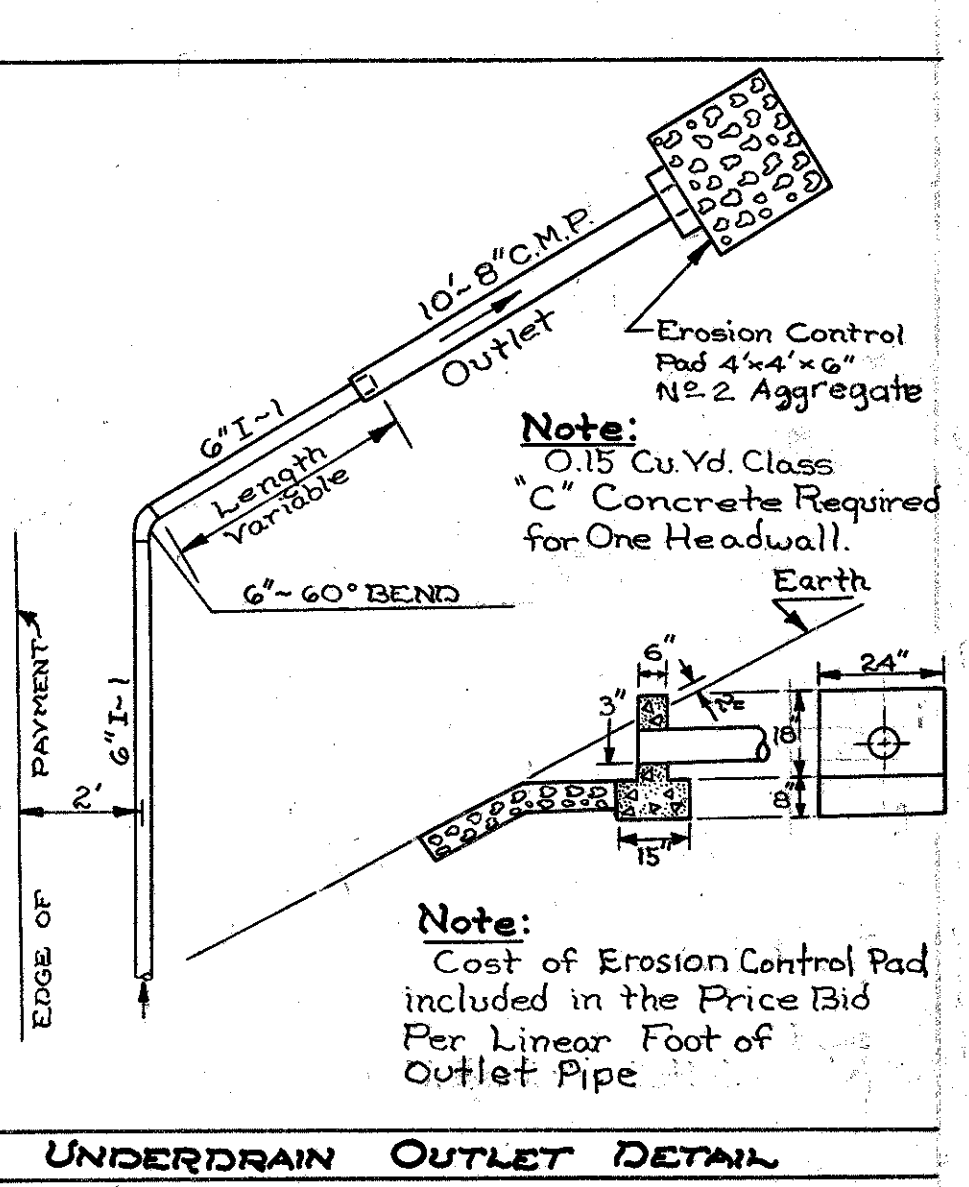
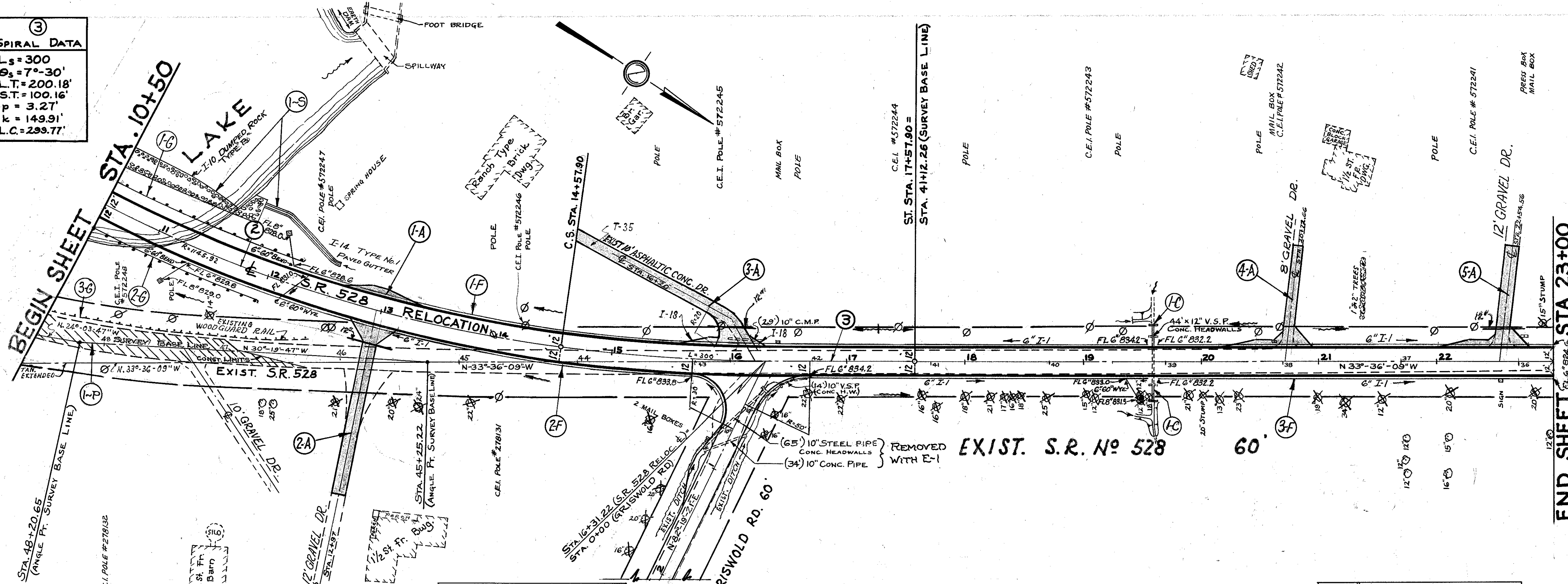


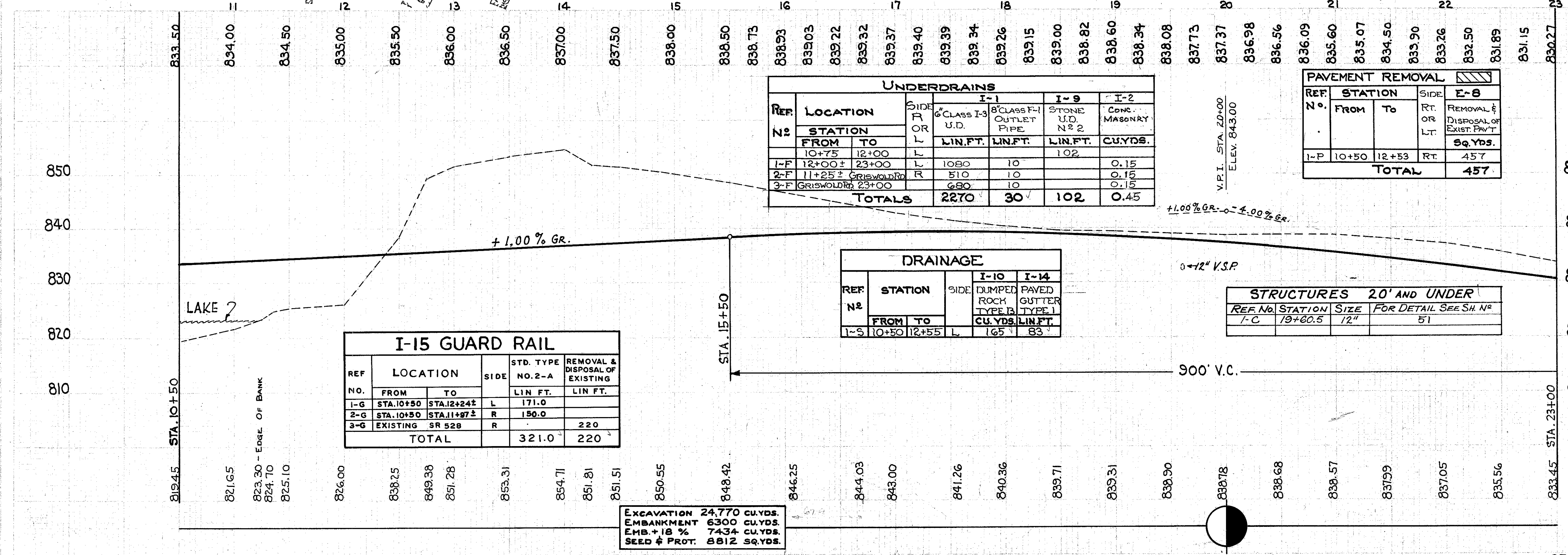
② CENTRAL CURVE DATA		③ SPIRAL DATA	
$D_c = 5'-00"-00"$	$L_s = 300$	$L_s = 300$	
$\Delta_c = 47^\circ-39'-22"$	$\theta_s = 7^\circ-30'$	$L.T. = 200.18'$	
$R_c = 1145.92'$	$S.T. = 100.16'$	$p = 3.27'$	
$L_c = 953.12'$	$k = 149.91'$	$L.C. = 299.77'$	
$T_c = 506.08'$			
$E_c = 106.78'$			
$C_h = 925.89'$			
$T_s = 849.41'$			
$E_s = 199.41'$			

LAKE COUNTY
LAK-528-124



B.M. #3
"X" S.W. Corner Lower Conc. Step
Sta. 13+60 158' Rt. of ϕ
Elevation = 859.714

B.M. #4
"X" S.E. Cor. Conc. Step. William's Res.
Sta. 21+10 - 142' Lt. of ϕ
Elevation = 849.385



UNDERDRAINS					
REF. NO.	LOCATION	SIDE	CLASS		
			I-1	I-9	I-2
STATION			6" CLASS I-3 U.D.	8" CLASS F-1 OUTLET PIPE	STONE U.D. N#2
FROM TO			LIN. FT.	LIN. FT.	LIN. FT.
1-F	12+00 ±	L	1080	10	0.15
2-F	11+25 ± Griswold Rd	R	510	10	0.15
3-F	Griswold Rd 23+00	R	680	10	0.15
TOTALS			2270	30	0.45

PAVEMENT REMOVAL			
REF. NO.	STATION	SIDE	CLASS
			F-1
FROM TO			REMOVAL OF EXIST. PAV'T
LIN. FT.			Sq. Yds.
1-P	10+50	RT.	457
TOTAL			457

DRAINAGE				
REF. NO.	STATION	SIDE	TYPE	
			I-10	I-14
FROM TO			CU. YDS.	LIN. FT.
1-S	10+50	L	165	83

STRUCTURES 20' AND UNDER			
REF. NO.	STATION	SIZE	FOR DETAIL SEE SH. N#
1-C	19+80.5	12"	51

I-15 GUARD RAIL				
REF. NO.	LOCATION		STD. TYPE NO. 2-A	REMOVAL & DISPOSAL OF EXISTING
	FROM	TO		
1-G	STA. 10+50	STA. 12+24 ±	L	171.0
2-G	STA. 10+50	STA. 11+97 ±	R	150.0
3-G	EXISTING SR 528		R	220
TOTAL			321.0	220

EXCAVATION 24,770 CU. YDS.
EMBANKMENT 6300 CU. YDS.
EMB. + 18% 7434 CU. YDS.
SEED & PROT. 8812 SQ. YDS.

DRIVEWAY & MAILBOX APPROACH QUANTITIES														
REF. NO.	STATION	SIDE	HEIGHT	WIDTH	APPROX. GRADE	EMBRANK. EXCAV.	EMBRANK. + 18% AGGREGATE	STABILIZED CRUSHED AGGREGATE	CLASS I-1	T-30 BIT. ASPHALTIC PRIME COURSE COAT				
											CU. YDS.	CU. YDS.	CU. YDS.	LIN. FT.
1-A	12+95	L	148	12	+14.0	872.0	-	49.4	38					
2-A	12+95	R	180	10	+10.0	567.0	-	33.6	38	12.2				
3-A	16+20	L	180	10	+8.5	59.0	-	26.2						
4-A	20+72	L	88	8	+9.5	72.0	-	34.7	36					
5-A	22+54	L	88	12	+9.5	72.0	-	34.7						
TOTAL										1573.0	150.1	112	12.2	87.5