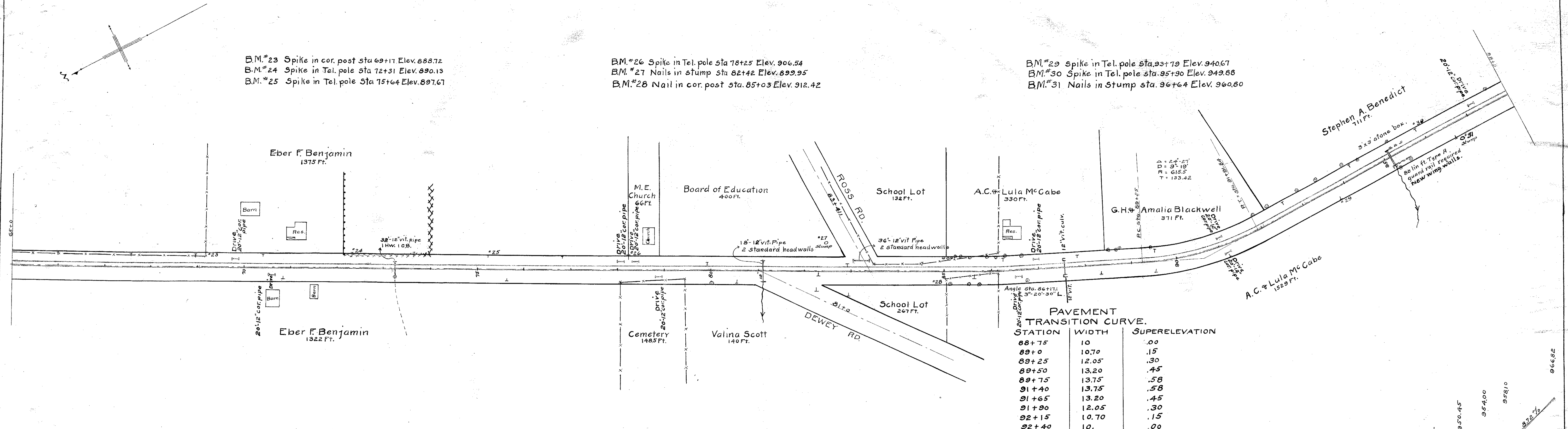


B.M. #23 Spike in cor. post sta 69+17 Elev. 888.72
B.M. #24 Spike in Tel. pole sta 72+31 Elev. 890.13
B.M. #25 Spike in Tel. pole sta 75+64 Elev. 897.67

B.M. #26 Spike in Tel. pole sta 78+25 Elev. 906.54
B.M. #27 Nails in stump sta 82+42 Elev. 899.95
B.M. #28 Nail in cor. post sta. 85+03 Elev. 912.42

B.M. #29 Spike in Tel. pole sta. 93+79 Elev. 940.67
B.M. #30 Spike in Tel. pole sta. 95+90 Elev. 949.88
B.M. #31 Nails in Stump sta. 96+64 Elev. 960.80



PAVEMENT TRANSITION CURVE.

STATION	WIDTH	SUPERELEVATION
88+75	10	.00
89+0	10.70	.15
89+25	12.05	.30
89+50	13.20	.45
89+75	13.75	.58
91+40	13.75	.58
91+65	13.20	.45
91+90	12.05	.30
92+15	10.70	.15
92+40	10	.00

