

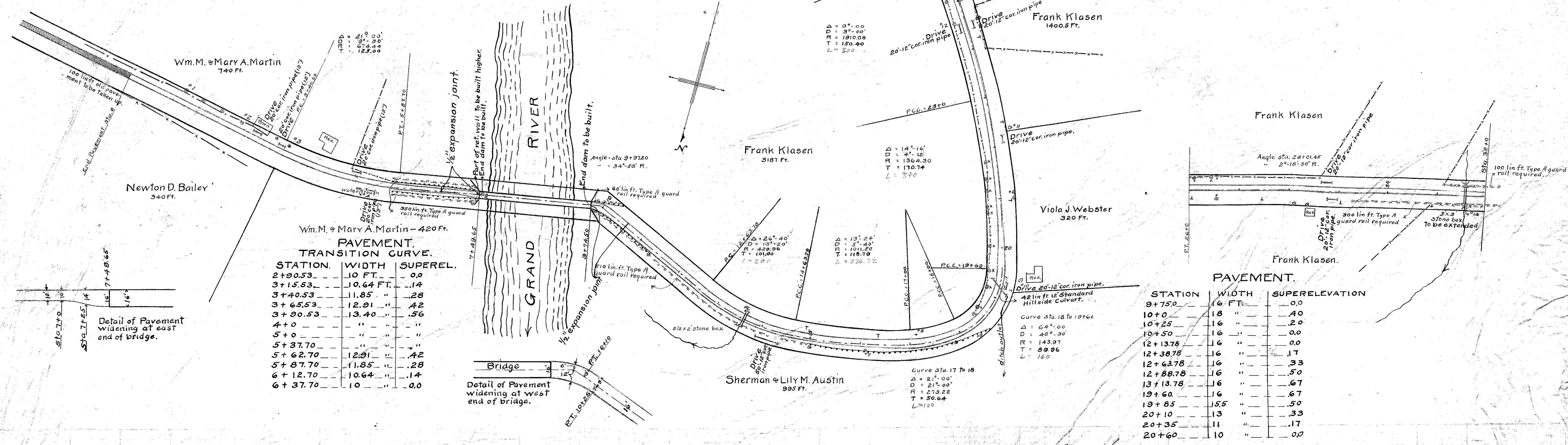
BM. #1 Spike in Hickory Sta. 1+13 Elev. 734.92
BM. #2 Spikes 30' S.V. Sta. 2+43 Elev. 722.55

BM. #3 Nail in 6" pear Sta. 3+52 Elev. 710.07
BM. #4 Cross on S.W. cor. water trough Elev. 701.13

BM. #5 U.S. Gov. bench N.W. cor. Bridge Elev. 696.00
BM. #6 Knob on S.E. cor. Culvert Sta. 13+00 Elev. 694.26

BM. #7 Spike in 30" Maple Sta 16+15 Elev. 706.44
BM. #8 Nail in Shale Bank Sta 17+20 Elev. 718.32
BM. #9 Spike in post Sta. 16+25 Elev. 729.84
BM. #10 Bolt in Pine Tree Sta 19+40 Elev. 746.33

BM. #11 Nail in 6" Syc. Sta. 22+30 Elev. 736.00
BM. #12 Spike in 12" Ash Sta. 24+55 Elev. 782.21
BM. #13 Spike in root 12" Elm Sta. 25+90 Elev. 791.97
BM. #14 Knob on S.W. cor. Cuv. Sta 31+99 Elev. 808.29



Wm. M. & Mary A. Martin - 420 Ft.
PAVEMENT TRANSITION CURVE.

STATION	WIDTH	SUPERELEV.
2+00.53	10 FT.	0.0
3+15.53	10.64 FT.	.14
3+40.53	11.85 "	.28
3+65.53	12.91 "	.42
3+90.53	13.40 "	.56
4+0	"	"
5+37.70	"	"
5+62.70	12.91 "	.42
5+87.70	11.85 "	.28
6+12.70	10.64 "	.14
6+37.70	10 "	0.0

PAVEMENT.

STATION	WIDTH	SUPERELEVATION
9+75.0	16 FT.	0.0
10+0	18 "	.40
10+25	18 "	.20
10+50	16 "	0.0
12+13.78	16 "	0.0
12+30.78	16 "	.17
12+63.78	16 "	.33
12+88.78	16 "	.50
13+13.78	16 "	.67
19+60	16 "	.67
19+85	15.5 "	.50
20+10	13 "	.33
20+35	11 "	.17
20+60	10 "	0.0

GRADE ELEVATIONS

748.90	748.51	746.94	745.24	743.37	741.32	739.11	734.82	729.93	725.94	720.75	716.16	711.57	706.36	704.62	702.95	701.35	700.04	699.01	698.26	697.79	697.60	697.40	697.30	697.36	697.24	696.88	695.49	694.78	694.52	694.44	694.42	694.49	694.76	695.21	695.96	696.69	697.12	698.93	700.34	701.95	703.72	705.69	707.86	710.21	712.76	715.40	720.68	725.96	731.24	736.52	741.80	747.08	752.36	757.64	762.92	768.20	773.48	778.76	784.04	789.32	794.60	799.88	805.16	810.44	815.72	821.00	826.28	831.56	836.84	842.12
--------	--------	--------	--------	--------	--------	--------	--------	--------	--------	--------	--------	--------	--------	--------	--------	--------	--------	--------	--------	--------	--------	--------	--------	--------	--------	--------	--------	--------	--------	--------	--------	--------	--------	--------	--------	--------	--------	--------	--------	--------	--------	--------	--------	--------	--------	--------	--------	--------	--------	--------	--------	--------	--------	--------	--------	--------	--------	--------	--------	--------	--------	--------	--------	--------	--------	--------	--------	--------	--------	--------

SURFACE ELEVATIONS

STATIONS	GRADE ELEVATIONS	SURFACE ELEVATIONS
0	748.90	748.90
1	748.51	735.7
2	746.94	725.5
3	745.24	714.2
4	743.37	706.1
5	741.32	700.3
6	739.11	696.5
7	734.82	696.1
8	729.93	697.3
9	725.94	697.4
10	720.75	696.8
11	716.16	694.8
12	711.57	694.6
13	706.36	694.5
14	704.62	695.5
15	702.95	698.7
16	701.35	704.6
17	700.04	714.7
18	699.01	726.1
19	698.26	733.3
20	697.79	741.6
21	697.60	757.7
22	697.40	767.4
23	697.30	773.5
24	697.36	776.5
25	697.24	785.6
26	696.88	793.9
27	695.49	803.3
28	694.78	809.8
29	694.52	813.3
30	694.44	811.8
31	694.42	811.5
32	694.49	813.4

From Sta. 0+00 to Sta. 7+50
Cut = 1118.9 cu yds
Fill = 1153.8 "

From Sta. 11.5 to Sta. 20
Cut = 915.0 cu yds
Fill = 163.8 "

From Sta. 20 to Sta. 30
Cut = 1659.3 cu yds
Fill = 788.8 "

