

LAK-44-7.22  
 R/W PLAN  
 LIMITED ACCESS

S.R. 44  
 R/W CURVE DATA No. 1  
 P.I. Sta. 106+20.81  
 $\Delta = 2^\circ 30' 00''$  Lt.  
 $D = 1^\circ 29' 53.3''$   
 $R = 3824.46'$   
 $L = 166.87'$   
 $T = 83.45'$   
 $Ch = 166.86'$  (N  $22^\circ 14' 47''$  E.)

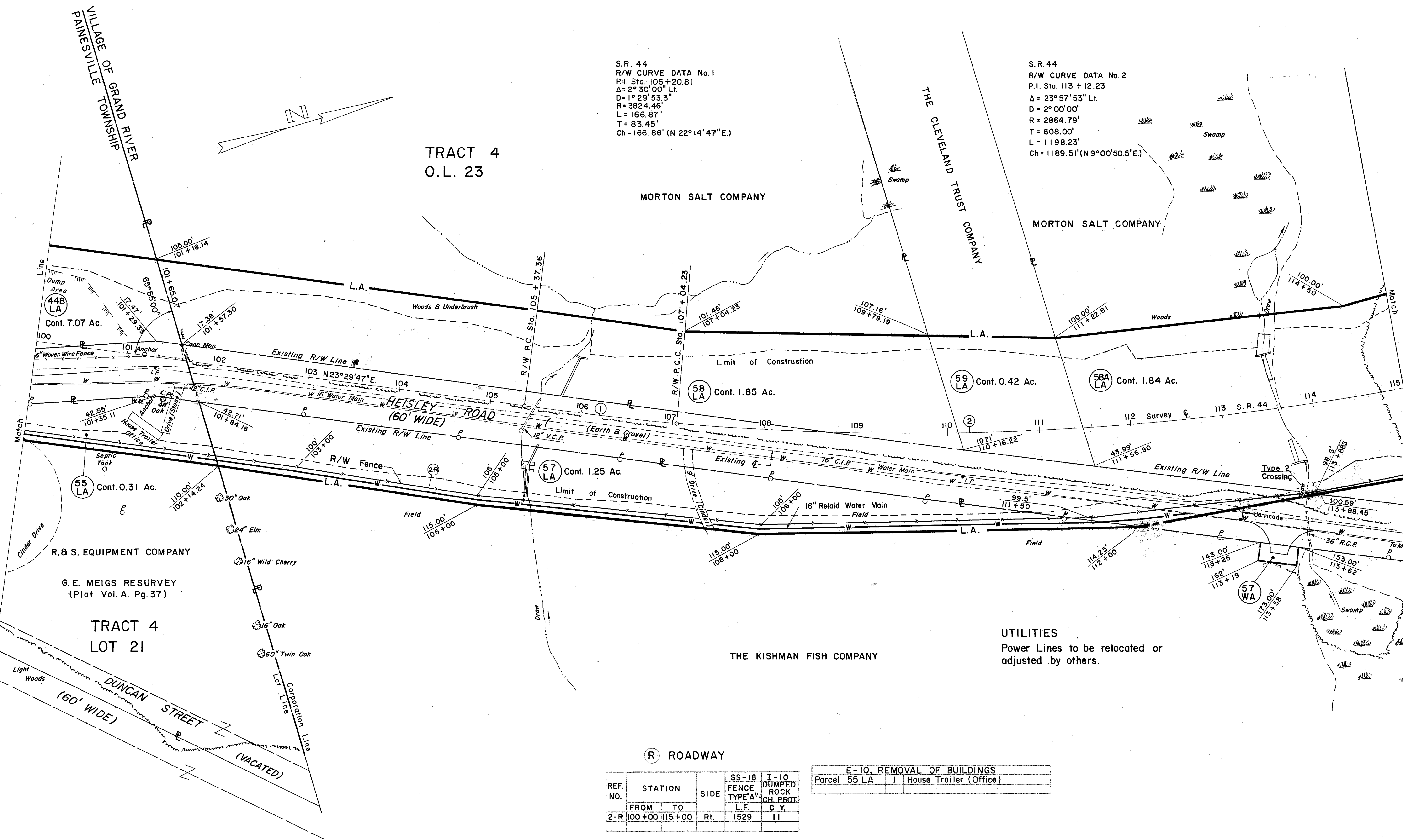
S.R. 44  
 R/W CURVE DATA No. 2  
 P.I. Sta. 113+12.23  
 $\Delta = 23^\circ 57' 53''$  Lt.  
 $D = 2^\circ 00' 00''$   
 $R = 2864.79'$   
 $T = 608.00'$   
 $L = 1198.23'$   
 $Ch = 1189.51'$  (N  $9^\circ 00' 50.5''$  E.)

TRACT 4  
 O.L. 23

MORTON SALT COMPANY

THE CLEVELAND TRUST COMPANY

MORTON SALT COMPANY



R. & S. EQUIPMENT COMPANY  
 G. E. MEIGS RESURVEY  
 (Plat Vol. A. Pg. 37)

TRACT 4  
 LOT 21

THE KISHMAN FISH COMPANY

UTILITIES  
 Power Lines to be relocated or  
 adjusted by others.

(R) ROADWAY

REF. NO.	STATION		SIDE	SS-18 FENCE TYPE 'A'	I-10 DUMPED ROCK CH. PROT. C. Y.
	FROM	TO			
2-R	100+00	115+00	Rt.	1529	11

E-10. REMOVAL OF BUILDINGS	
Parcel 55 LA	House Trailer (Office)