

LAK-44-7.22
 R/W PLAN
 LIMITED ACCESS

VICTOR G. PALINKAS

NELSON & CLEO HARTER

2 LA Cont. 0.07 Ac.

4 LA Cont. 0.21 Ac.

2 Cont. 0.42 Ac.

4 Cont. 0.01 Ac.

27 LA Cont. 0.05 Ac.
 P.R.O. = 0.02 Ac.

4 WA

27 T Cont. 0.11 Ac.
 P.R.O. = 0.02 Ac.

27 AT Cont. 0.20 Ac.
 P.R.O. = 0.15 Ac.

CHARLES E. & JULIA L. LIPMAN

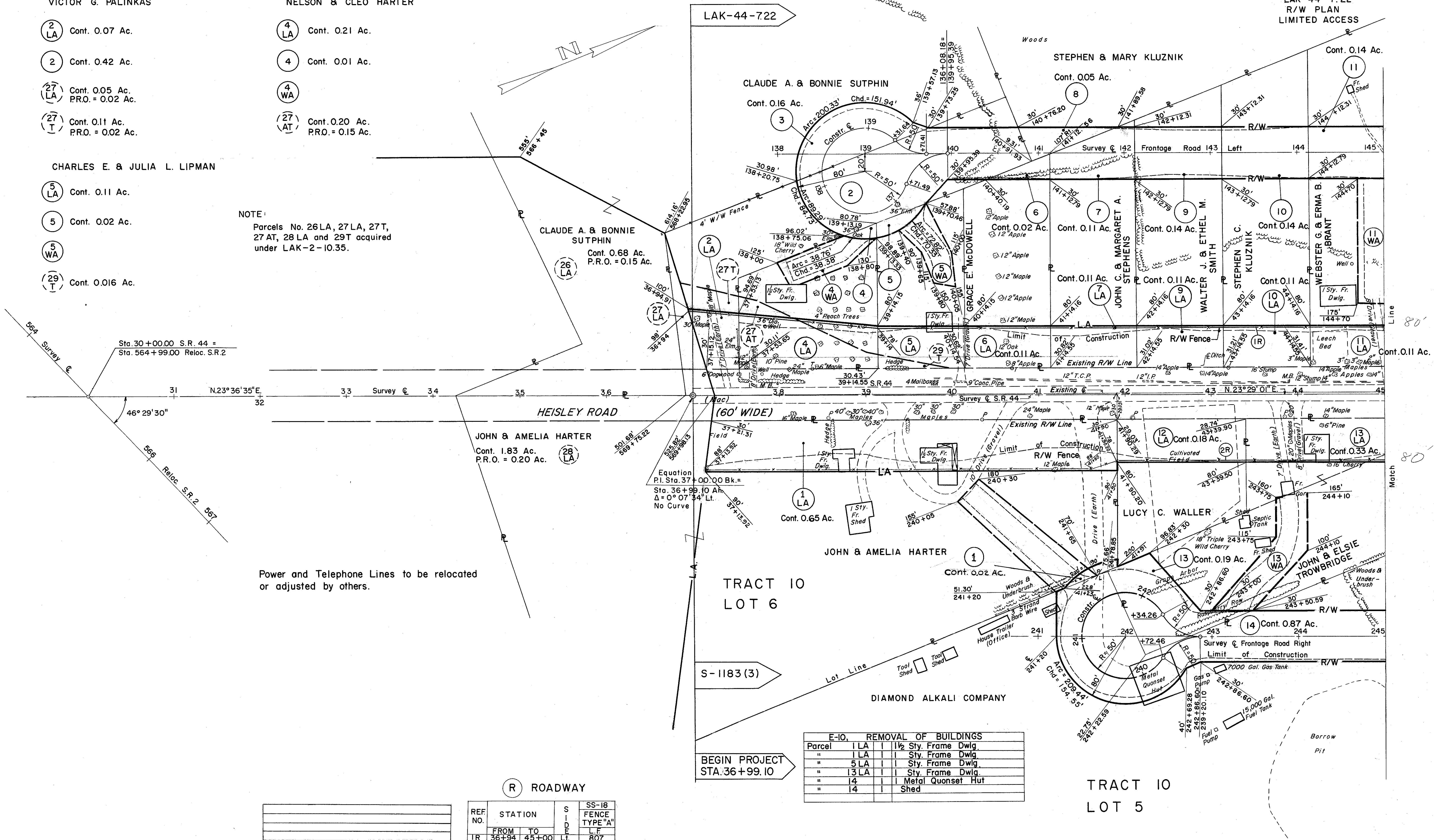
5 LA Cont. 0.11 Ac.

5 Cont. 0.02 Ac.

5 WA

29 T Cont. 0.016 Ac.

NOTE:
 Parcels No. 26LA, 27LA, 27T,
 27AT, 28LA and 29T acquired
 under LAK-2-10.35.



Power and Telephone Lines to be relocated
 or adjusted by others.

(R) ROADWAY

REF. NO.	STATION	SIDE	SS-18 FENCE TYPE "A"
1R	36+94	45+00	L.F. 807
2R	37+12	45+00	Rt. 789

Rev. 6-23-61. Parcel 1-R/W Line Changed.

REF. NO.	STATION	SIDE	SS-18 FENCE TYPE "A"
1R	36+94	45+00	L.F. 807
2R	37+12	45+00	Rt. 789

E-10, REMOVAL OF BUILDINGS	
Parcel	1 LA
"	1 LA
"	5 LA
"	13 LA
"	4
"	14
	1 1/2 Sty. Frame Dwlg
	1 Sty. Frame Dwlg
	1 Sty. Frame Dwlg
	1 Sty. Frame Dwlg
	1 Metal Quonset Hut
	1 Shed

BEGIN PROJECT
 STA. 36+99.10

TRACT 10
 LOT 5