

LOCATION PLAN

LAK - 44 - 7.22

PAINESVILLE TOWNSHIP MENTOR TOWNSHIP
 VILLAGE OF GRAND RIVER
 LAKE COUNTY, OHIO

LIMITED ACCESS

RECEIVED _____ TIME _____
 RECORDED _____
 PLAT BOOK N PAGE 62-2
 SIGNED _____ RECORDER LAKE COUNTY, OHIO
 FEE _____ PAID _____

199
212

SIGNED A. E. [Signature]
 DIVISION DEPUTY DIRECTOR

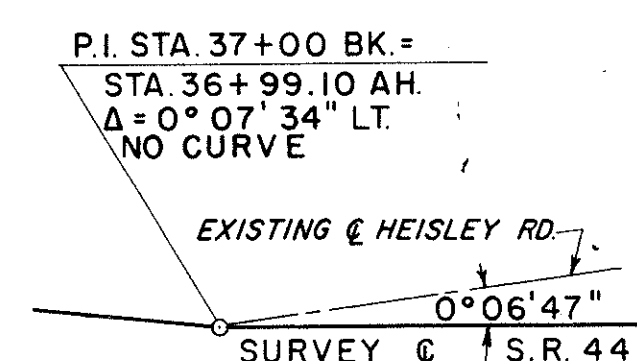
DATE 4/25/61

SIGNED John C. Brilhart
 JOHN C. BRILHART, REGISTERED SURVEYOR NO. 4659
 CAPITOL ENGINEERING ASSOCIATES

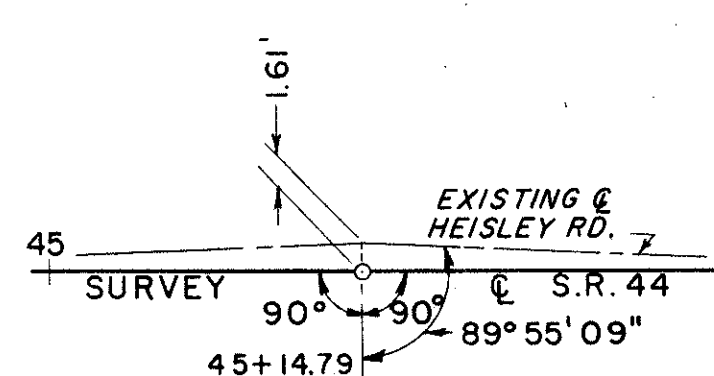
DATE 2-27-61

LOCATION AND LIMITED ACCESS APPROVED AND JOURNALIZED
 BY THE DIRECTOR OF HIGHWAYS, RECORDED ON
 DATE _____ IN VOLUME _____ PAGE _____
 OF THE DIRECTOR'S JOURNAL, PURSUANT TO LAW.

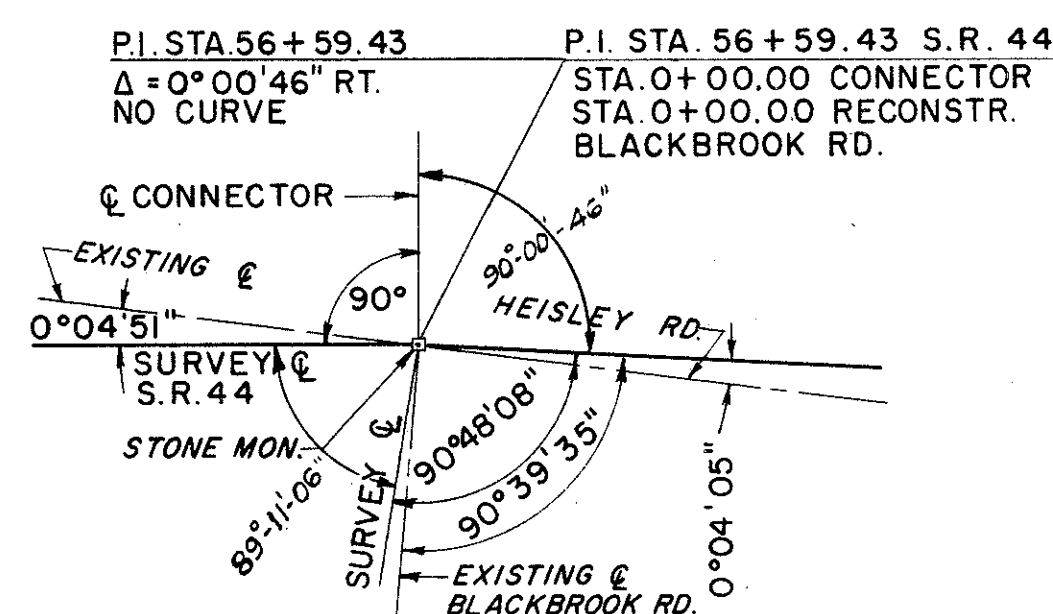
NOTE:
 DETAILS SHOWN HEREON NOT TO SCALE



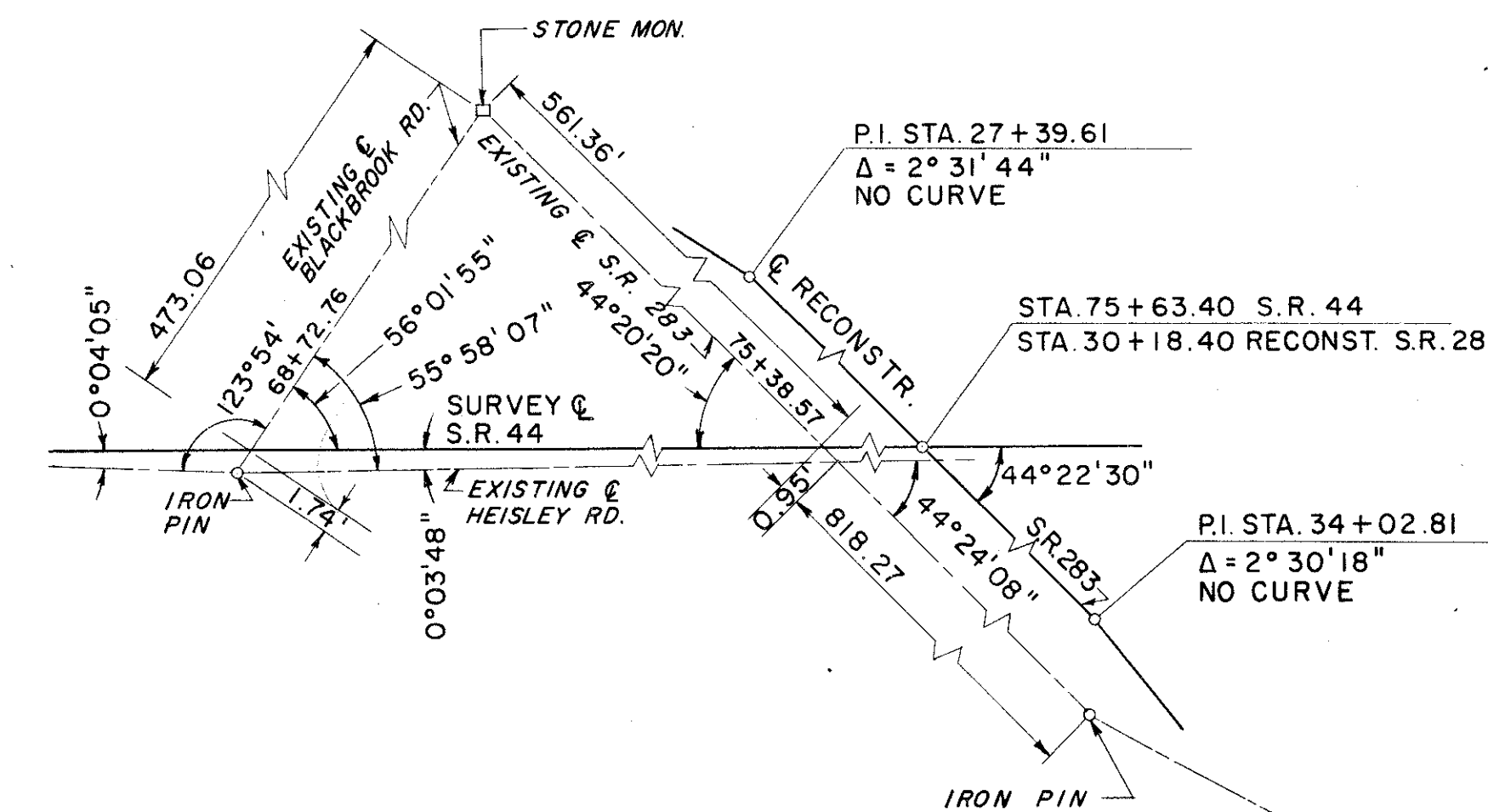
DETAIL "D"



DETAIL "E"

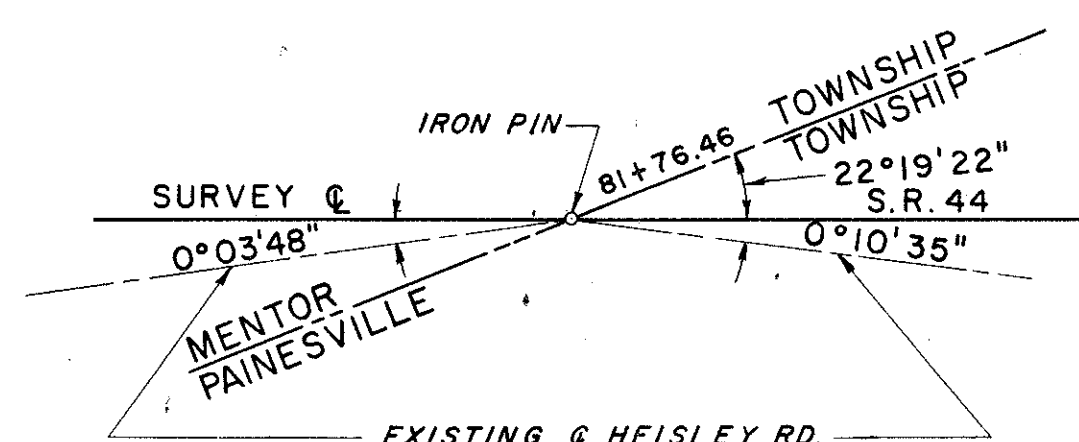


DETAIL "F"

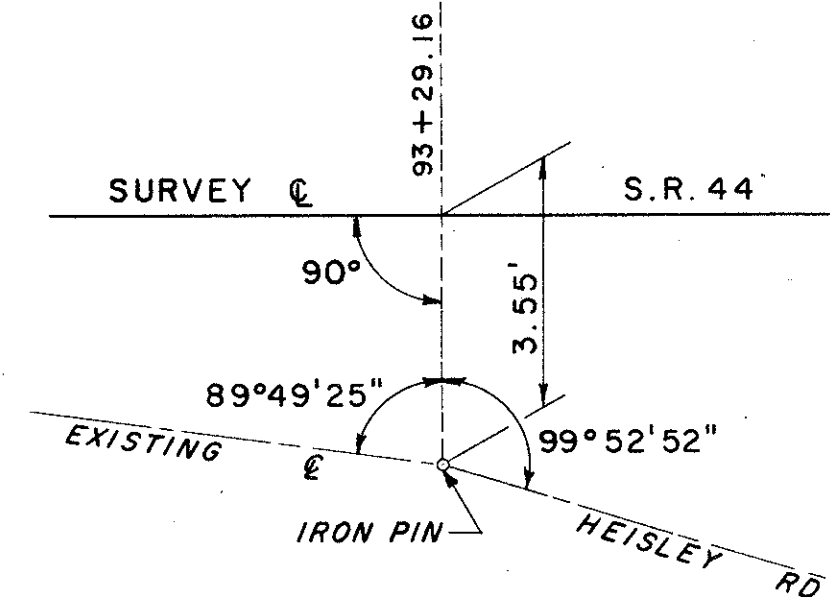


DETAIL "G"

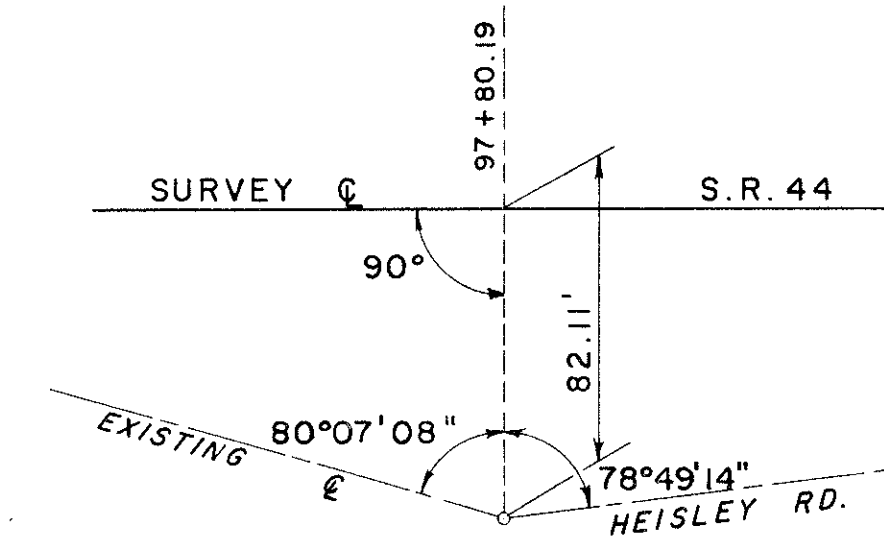
DETAIL "H"



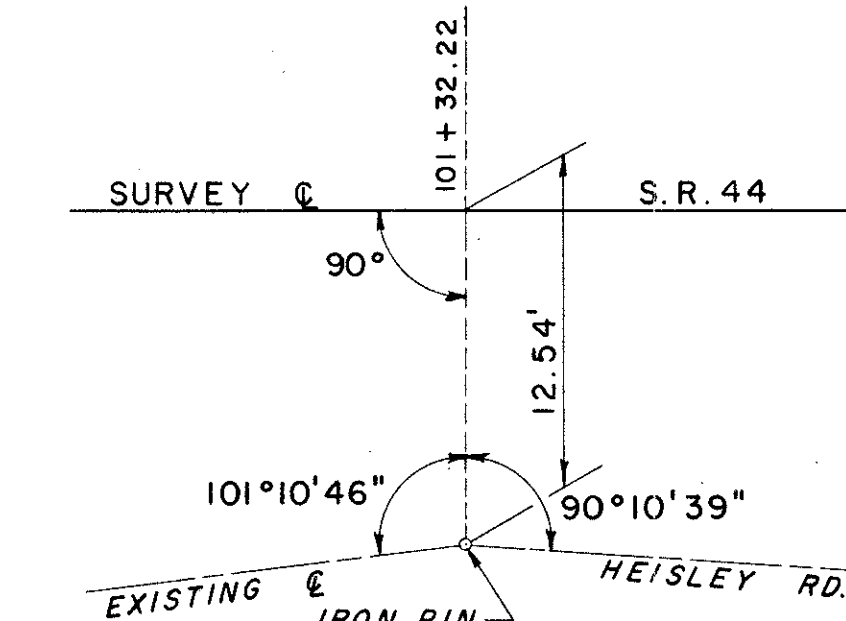
DETAIL "I"



DETAIL "J"



DETAIL "K"



DETAIL "L"