

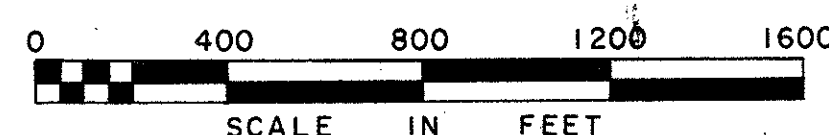
# LOCATION PLAN

## LAK - 44 - 7.22

### PAINESVILLE TOWNSHIP MENTOR TOWNSHIP

#### VILLAGE OF GRAND RIVER

#### LAKE COUNTY, OHIO



LIMITED ACCESS

RECEIVED \_\_\_\_\_ TIME \_\_\_\_\_

RECORDED MAY 1-1961

PLAT BOOK N. PAGE 62

SIGNED \_\_\_\_\_ RECORDER, LAKE COUNTY, OHIO

FEE \_\_\_\_\_ PAID \_\_\_\_\_

SIGNED A. B. Duman  
DIVISION DEPUTY DIRECTOR

DATE 4/25/61

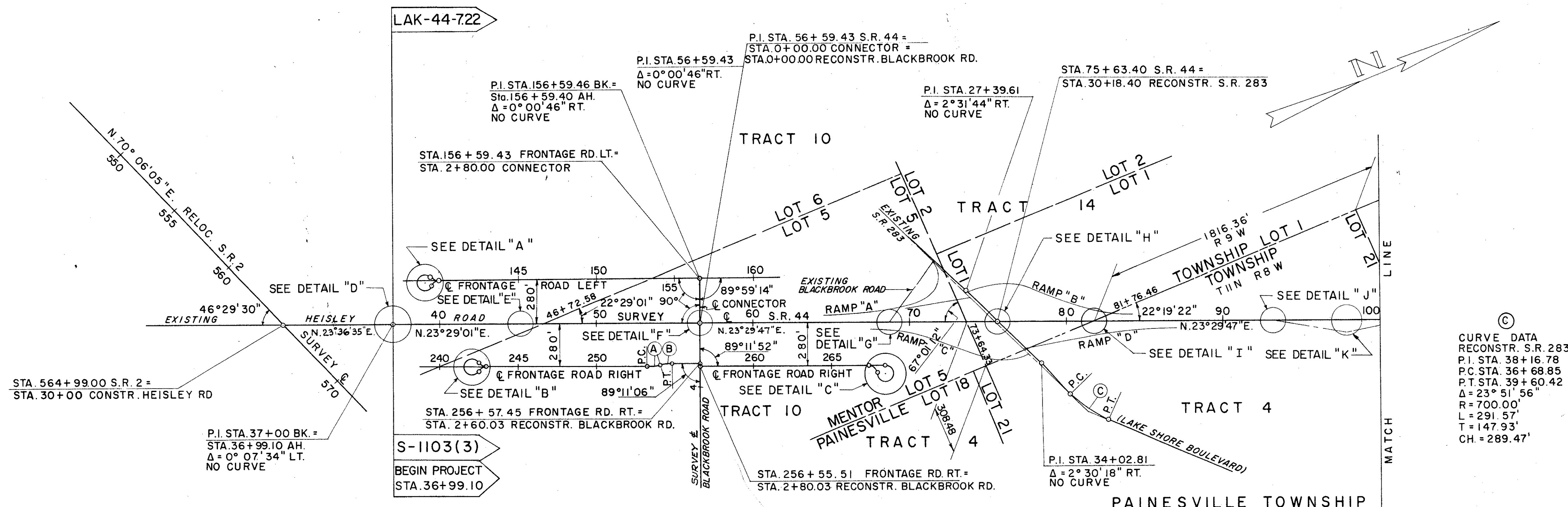
SIGNED John C. Brillhart  
JOHN C. BRILHART, REGISTERED SURVEYOR NO. 4659  
CAPITOL ENGINEERING ASSOCIATES

DATE 2-27-61

197  
212

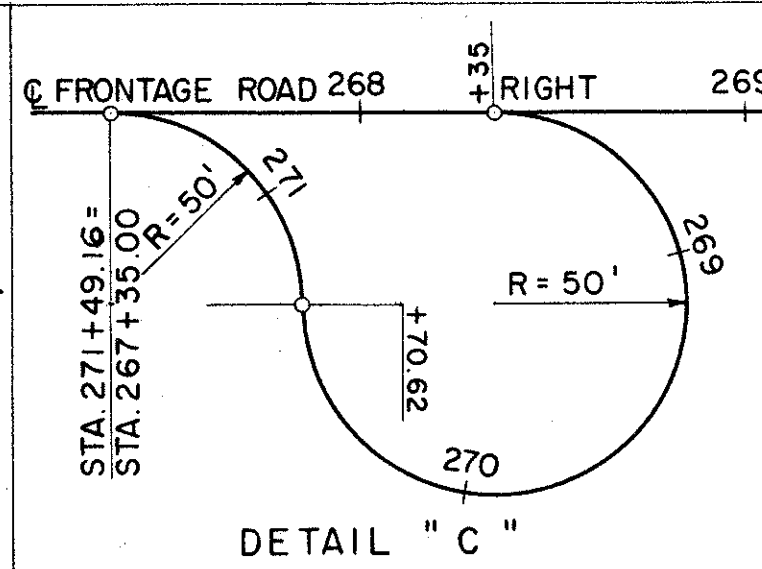
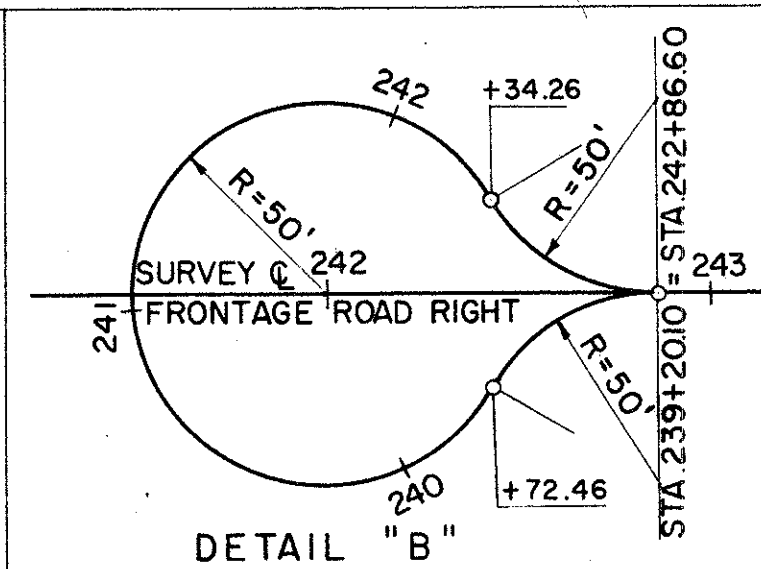
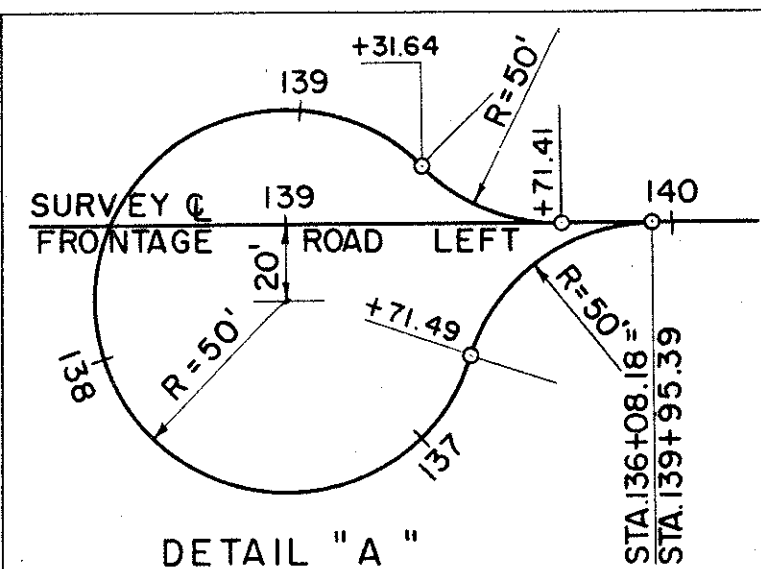
LOCATION AND LIMITED ACCESS APPROVED AND JOURNALIZED BY THE DIRECTOR OF HIGHWAYS, RECORDED ON DATE \_\_\_\_\_ IN VOLUME \_\_\_\_\_ PAGE \_\_\_\_\_ OF THE DIRECTOR'S JOURNAL, PURSUANT TO LAW.

MENTOR TOWNSHIP



③ CURVE DATA  
RECONSTR. S.R. 283  
P.I. STA. 38+16.78  
P.C. STA. 36+68.85  
P.T. STA. 39+60.42  
Δ = 23° 51' 56"  
R = 700.00'  
L = 291.57'  
T = 147.93'  
CH = 289.47'

CURVE DATA  
FRONTAGE ROAD RIGHT  
CURVES A & B  
P.C. STA. 253+26.38  
P.R.C. STA. 254+04.05  
P.T. STA. 254+81.72  
Δ = 14° 50' 05"  
R = 300.00'  
L = 77.67'  
T = 39.05'  
CH = 77.46



NOTE:  
FOR DETAILS "D" TO "K" SEE SHEET 199