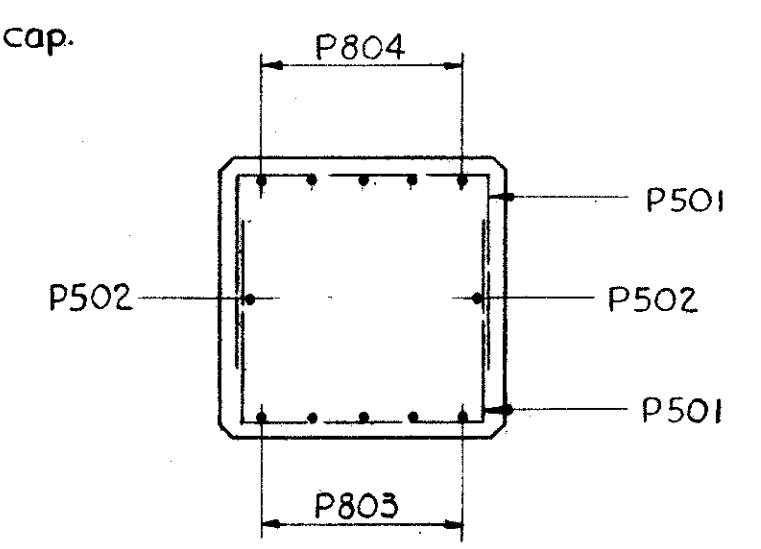
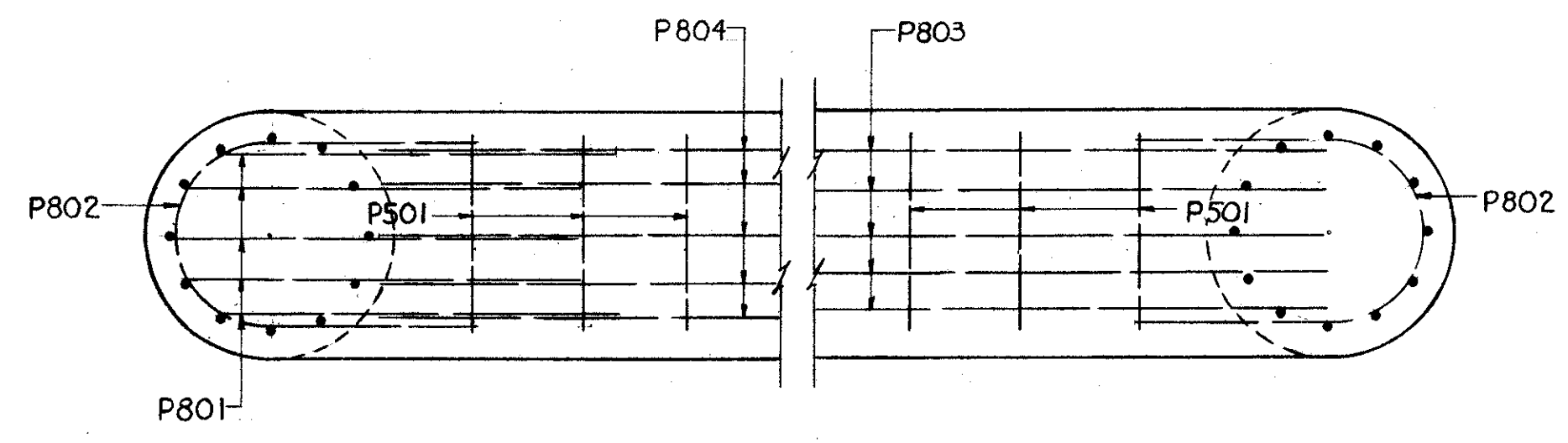
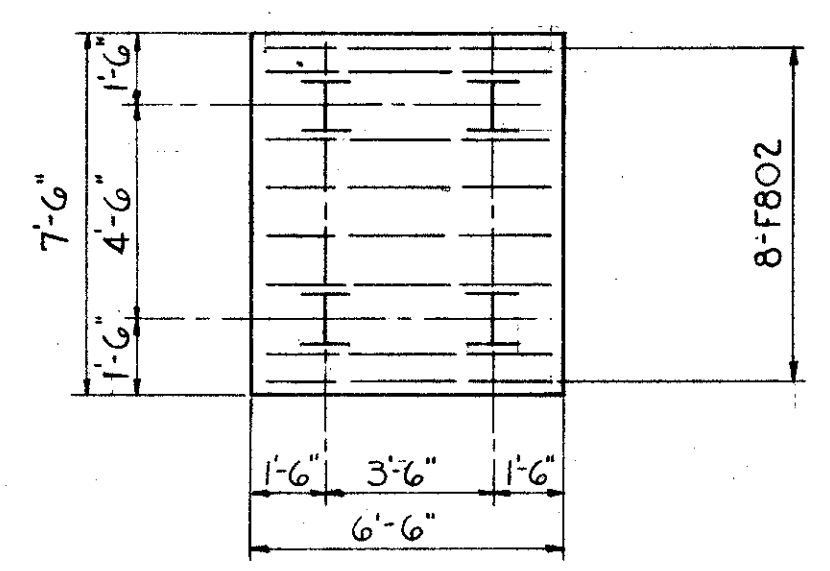
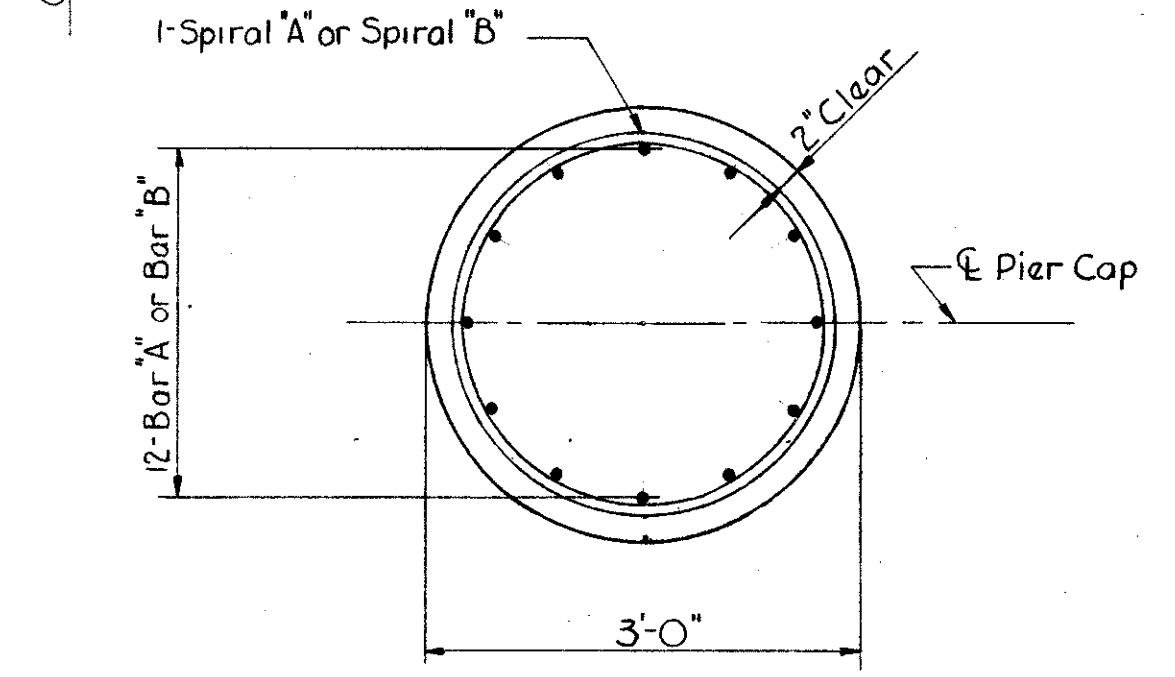
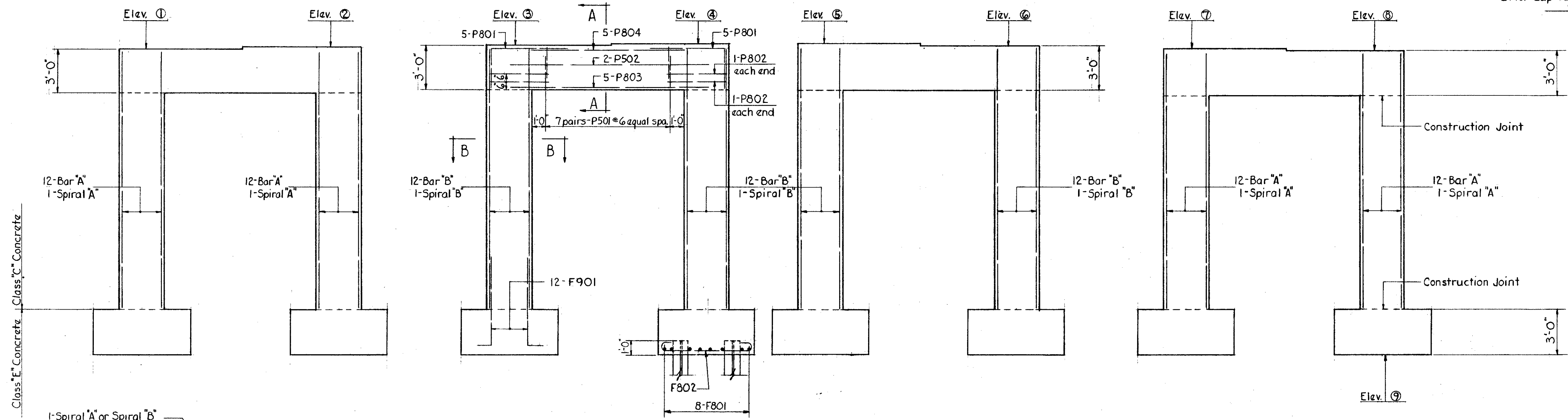
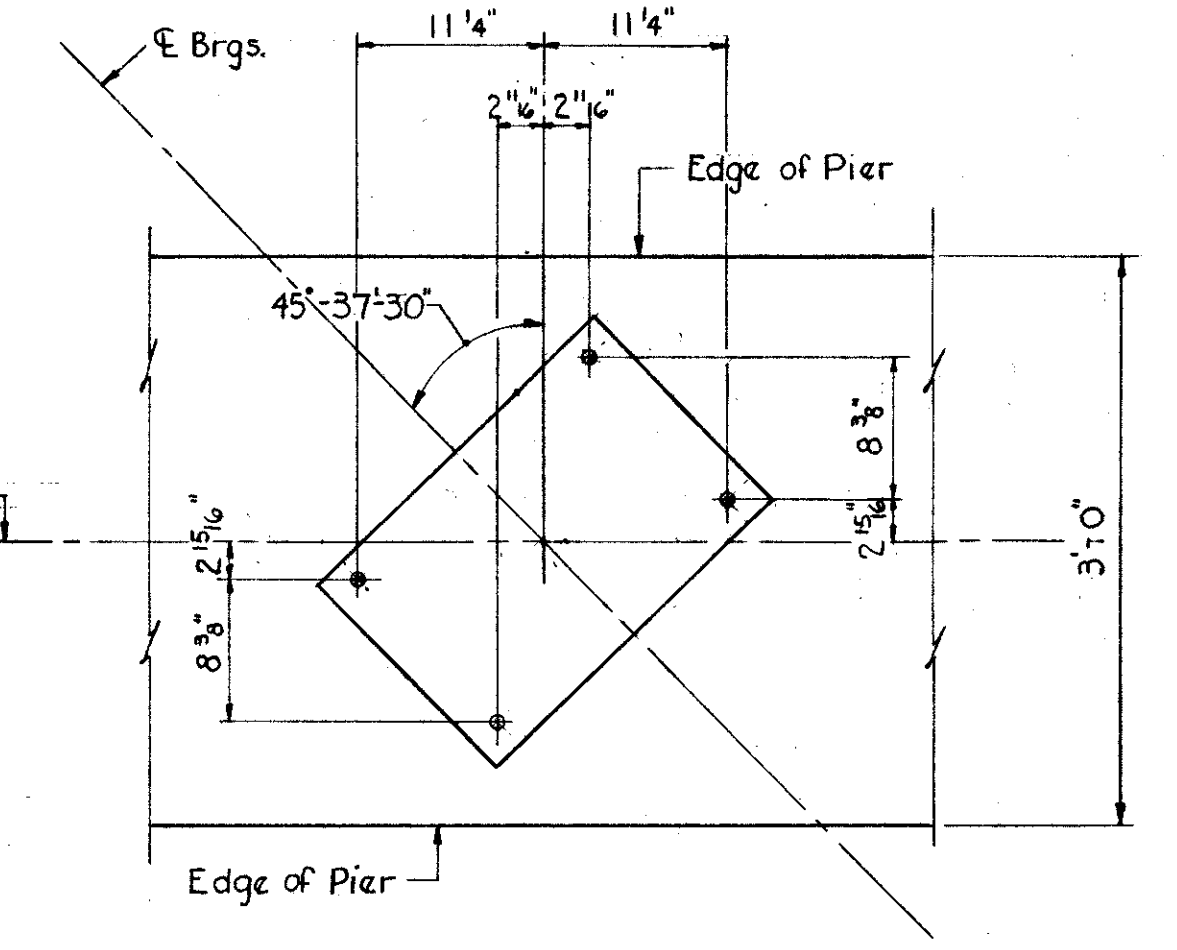
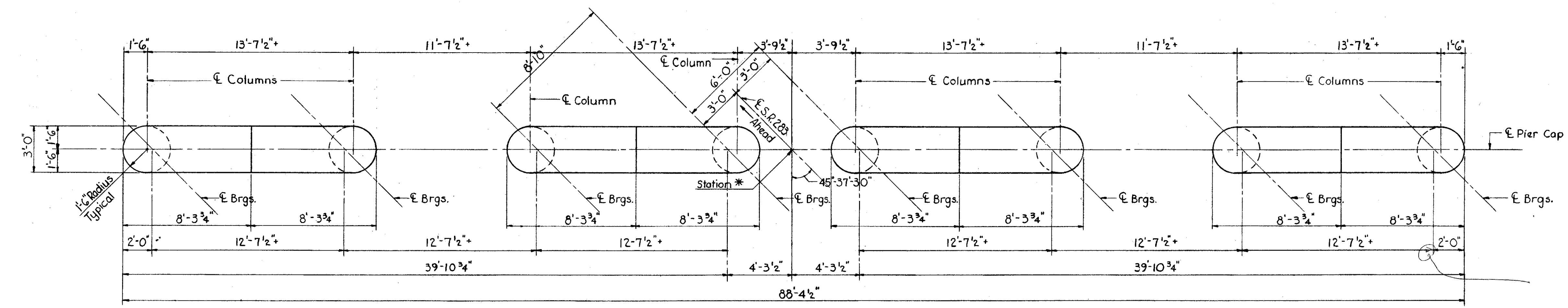


LAKE COUNTY
LAK-44-7.22



NOTES:

- REINFORCING STEEL shall have 3" of cover in the bottom of the footing and 2" elsewhere.
- SPECIAL CARE shall be taken in placing the reinforcing steel in the cap on PIER #2 so it does not interfere with the drilling of anchor bolt holes.
- ALL PILES 12BP53 Steel, design load 35 ton/pile.
- ALL PIER CAPS, columns and footings are identical except as otherwise shown.

LOCATION	STATION	ELEV. 1	ELEV. 2	ELEV. 3	ELEV. 4	ELEV. 5	ELEV. 6	ELEV. 7	ELEV. 8	ELEV. 9	BAR "A"	BAR "B"	SPIRAL "A"	SPIRAL "B"
Pier #1	29+53.40	615.82	615.91	616.01	616.09	616.06	615.86	615.66	615.45	593.50	P901	P902	SP401	SP402
Pier #2	30+18.40	615.95	616.09	616.21	616.34	616.33	616.17	616.01	615.83	595.50	P903	P904	SP403	SP404
Pier #3	30+83.40	615.84	616.01	616.18	616.34	616.35	616.23	616.09	615.95	593.00	P905	P906	SP405	SP406

PREPARED BY
CAPITOL ENGINEERING ASSOCIATES, DILLSBURG, PA.
FOR

STATE OF OHIO
DEPARTMENT OF HIGHWAYS
DIVISION OF DESIGN AND CONSTRUCTION
BUREAU OF BRIDGES

PIERS
BRIDGE NO. LAK-44-0795
S.R. 44 UNDER S.R. 283
LAKE COUNTY

STA 75+63.40

DESIGNED	DRAWN	TRACED	CHECKED	REVIEWED DATE	REVISED
M.C.	J.E.G.				