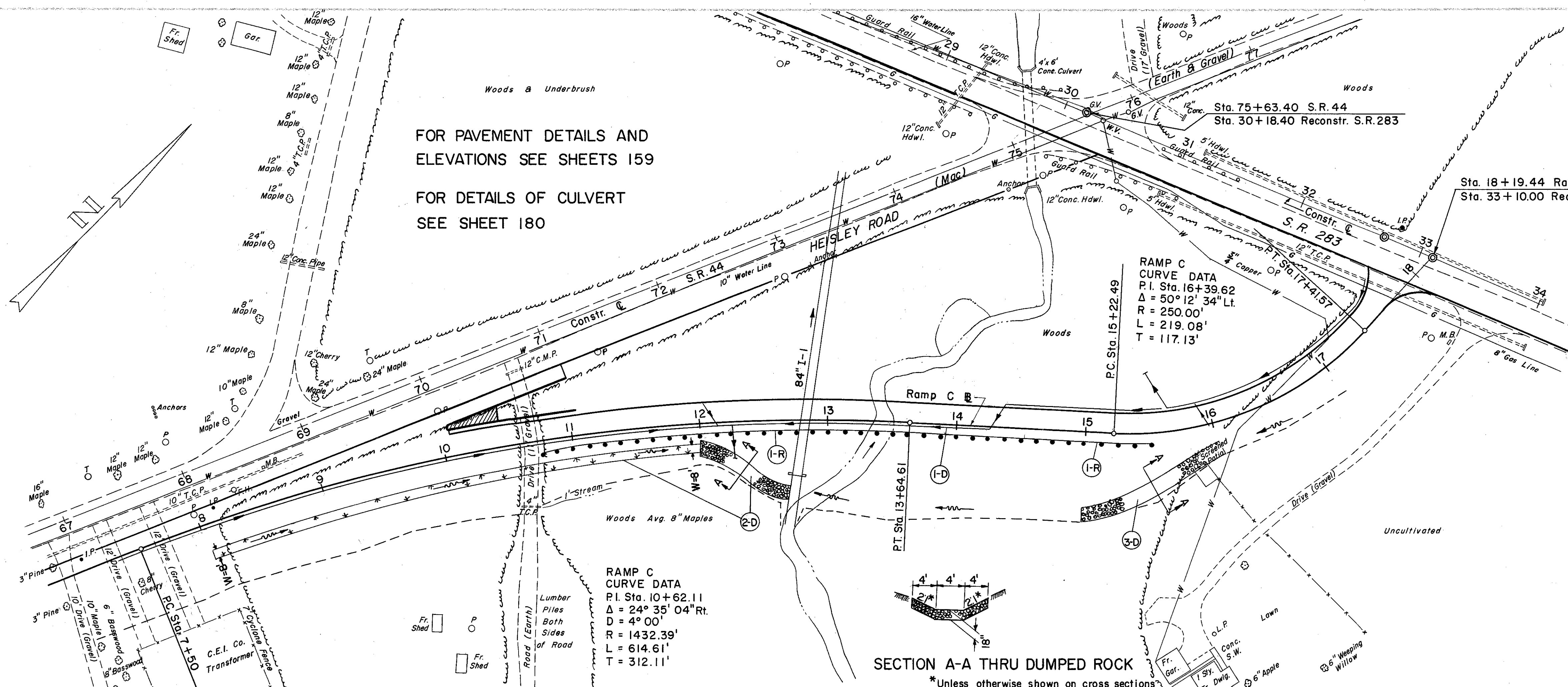


FOR PAVEMENT DETAILS AND ELEVATIONS SEE SHEETS 159  
FOR DETAILS OF CULVERT SEE SHEET 180



RAMP C CURVE DATA  
P.I. Sta. 10+62.11  
 $\Delta = 24^\circ 35' 04''$  Rt.  
D = 4° 00'  
R = 1432.39'  
L = 614.61'  
T = 312.11'

RAMP C CURVE DATA  
P.I. Sta. 16+39.62  
 $\Delta = 50^\circ 12' 34''$  Lt.  
R = 250.00'  
L = 219.08'  
T = 117.13'

SECTION A-A THRU DUMPED ROCK  
\*Unless otherwise shown on cross sections

(D) DRAINAGE

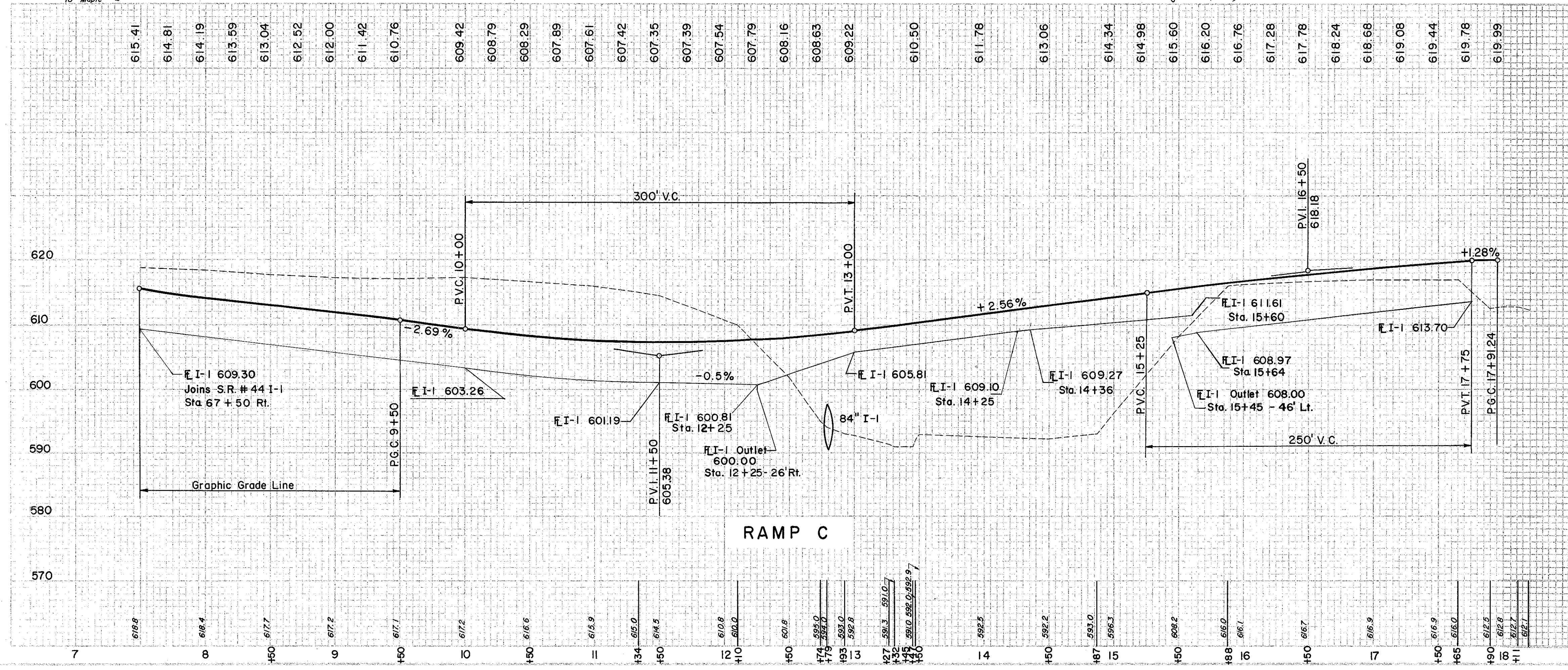
REF. NO.	STATION	SIDE	6" PIPE CLASS I-3		8" PIPE CLASS F-1		6" 60° BEND		6" 60° WYE		DUMPED ROCK CHANNEL PROTECT	L-10 SODDING
			SHALLOW	DEEP	L.F.	EA.	C.Y.	S.Y.				
1-D	7+50	RT.	270	824	20	3	2	1			67	353
2-D	8+00	RT.									110	
3-D	15+00	RT.									177	353
TOTAL			270	824	20	3	2	1				

(R) ROADWAY

REF. NO.	STATION	SIDE	I-15 GUARD RAIL STEEL BEAM STD. TYPE (DEEP)
I-R	10+75	RT.	475

(P) PAVEMENT

REF. NO.	STATION	SIDE	B-21	I-12	I-18	I-21	I-22	T-31	T-71	
			WATER PROOFED AGGR. BASE COURSE	CONC. CURB. TYPE 6	STAB. CRUSHED AGGR.	PORT. CEM. CONC. MEDIAN TYPE I	SUBBASE	BIT. MAT'L.	#6 AGGR.	REIN. PORT. CEM. CONC. PAV'T. 9"
			C.Y.	L.F.	C.Y.	S.Y.	C.Y.	GAL.	C.Y.	S.Y.
I-P	7+50	RT.	59	206	105	30.2	474	177	5.7	2118



EXCAVATION = 4,025 C.Y.  
EMBANKMENT = 21,556 C.Y.  
EMBANKMENT +20% = 25,867 C.Y.

RAMP C S.R. 283 INTERCHANGE  
STA. 7+50.00 TO STA. 18+19.44