

LAKE COUNTY
LAK-44-7.22

FOR PAVEMENT DETAILS AND ELEVATIONS SEE SHEET 161

S.R. 283
CONSTR. C
CURVE DATA
P.I. Sta. 38+16.78
 $\Delta = 23^\circ 51' 56''$
 $R = 700.00'$
 $L = 291.57'$
 $T = 147.93'$

(D) DRAINAGE

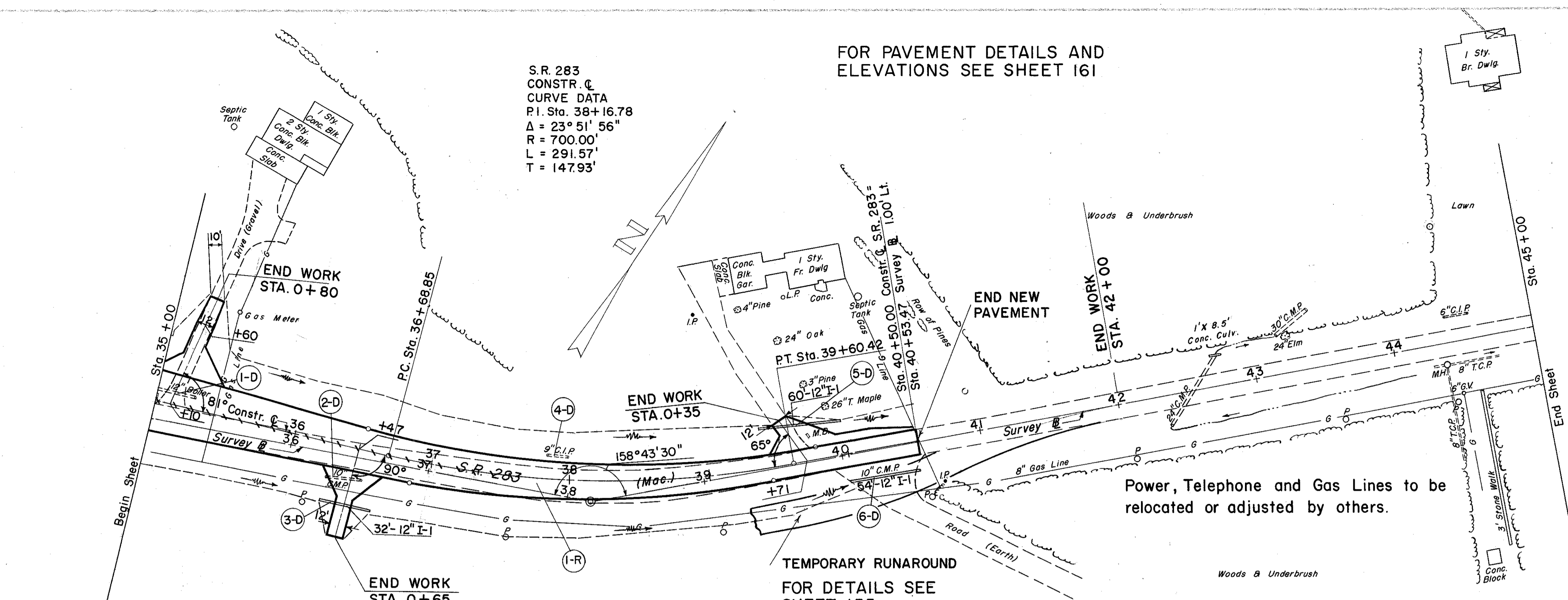
REF. NO.	STATION		SIDE	E-12 PIPE REMOVED 15" UNDER	I-1 12" PIPE CLASS C-1 M-6.4(c)
	FROM	TO			
I-D	34+98	35+28	LT.	30	
2-D	36+28	36+55	RT.	27	
3-D	36+28	36+65	RT.		32
4-D	37+84	37+99	LT.	15	
5-D	39+40	40+00	LT.		60
6-D	39+97	40+51	RT.	54	54
TOTAL				126	146

(P) PAVEMENT

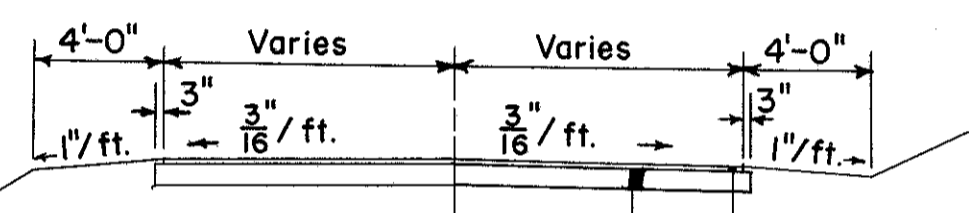
REF. NO.	STATION		SIDE	B-19 AGGR. BASE COURSE	B-35 ASPH. CONC. LEVELING COURSE 1 3/4"	I-9 ASPH. CONC. BASE COURSE 2 3/4"	I-18 STAB. CRUSHED AGGR.	I-22 SUBBASE	T-30 BIT. PRIME COAT	T-35 ASPH. CONC. SURF COURSE 1 1/4"	I-23 ASPH. CONC. SURF COURSE 2"	I-23 PRECAST CONC. TRAFFIC DIVIDERS	
	FROM	TO											C.Y.
I-P	35+00	40+50		382	81	129	168	54	247	662	58	6	22
2-P	Drive-35+10		LT.	21								6	
3-P	Drive-36+47		RT.	13									
4-P	Drive-39+71		LT.	15									
TOTAL				431	81	129	168	54	247	662	58	12	22

(R) ROADWAY

REF. NO.	STATION		SIDE	PAVT. REMOVAL
	FROM	TO		
I-R	35+00	40+50		830



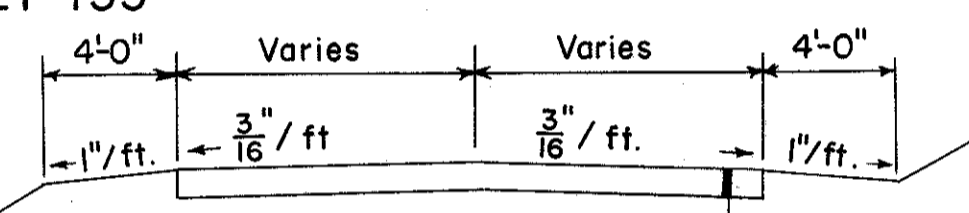
Power, Telephone and Gas Lines to be relocated or adjusted by others.



TYPICAL SECTION DRIVE
Lt. Sta. 35+10 (To Sta. 0+60 only)
Lt. Sta. 39+71

2" Asphaltic Concrete Surface Course
Type C (70-85) placed in 2-1" Layers

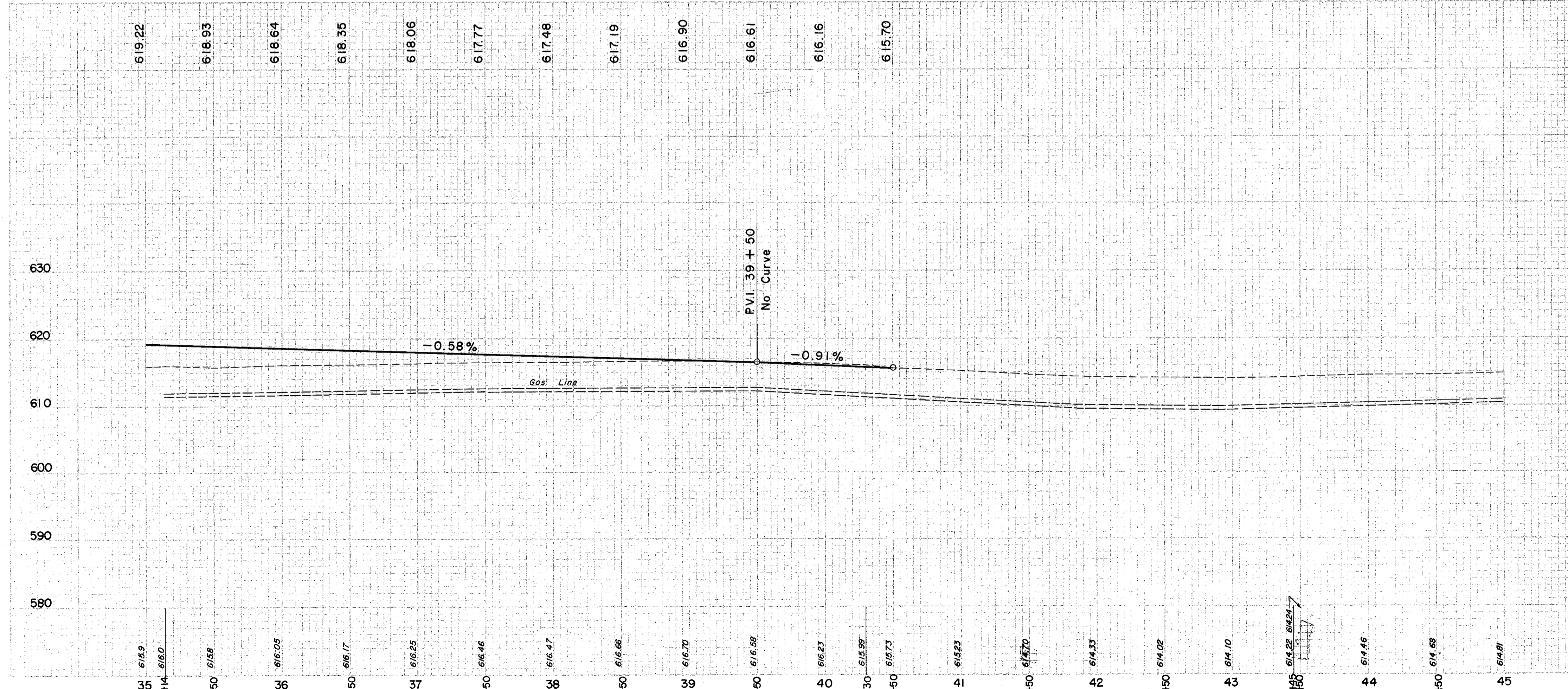
5" B-19 Aggregate Base Course



TYPICAL SECTION DRIVE
Lt. Sta. 35+10 0+60-0+80
Rt. Sta. 36+47

6" B-19 Aggregate Base Course
(Sta. 0+60 - 0+80 Lt. 35+10)

5" B-19 Aggregate Base Course
(To Sta. 0+65 Rt. 36+47)



Excavation	=	346 C.Y.
Embankment	=	1,492 C.Y.
Embankment 20"	=	1,790 C.Y.