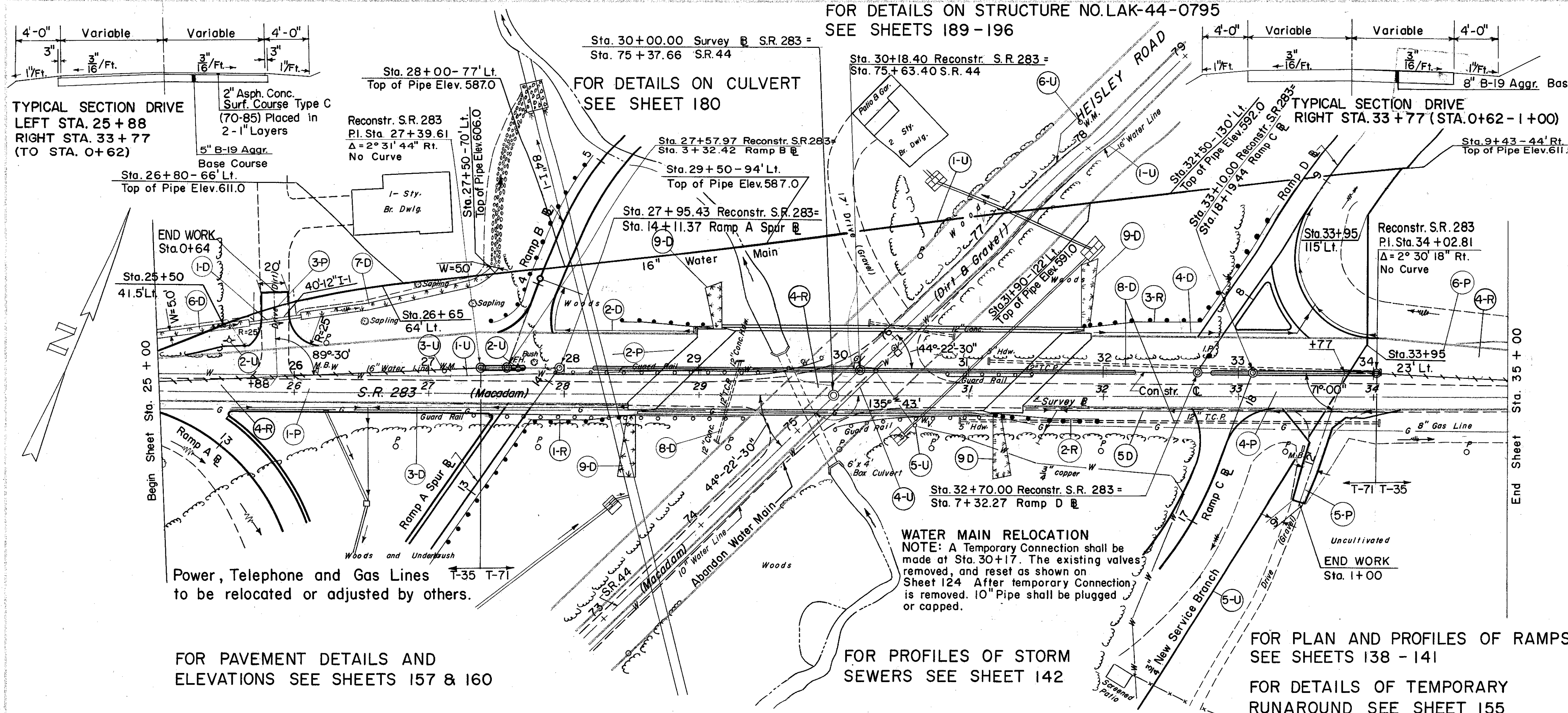


LAKE COUNTY
LAK-44-7.22



TYPICAL SECTION DRIVE
LEFT STA. 25 + 88
RIGHT STA. 33 + 77
(TO STA. 0 + 62)

2" Asp. Conc. Surf. Course Type C (70-85) Placed in 2-1" Layers

5" B-19 Aggr. Base Course

FOR DETAILS ON CULVERT
SEE SHEET 180

FOR DETAILS ON STRUCTURE NO. LAK-44-0795
SEE SHEETS 189-196

TYPICAL SECTION DRIVE
RIGHT STA. 33 + 77 (STA. 0+62-1+00)

Power, Telephone and Gas Lines T-35 T-71 to be relocated or adjusted by others.

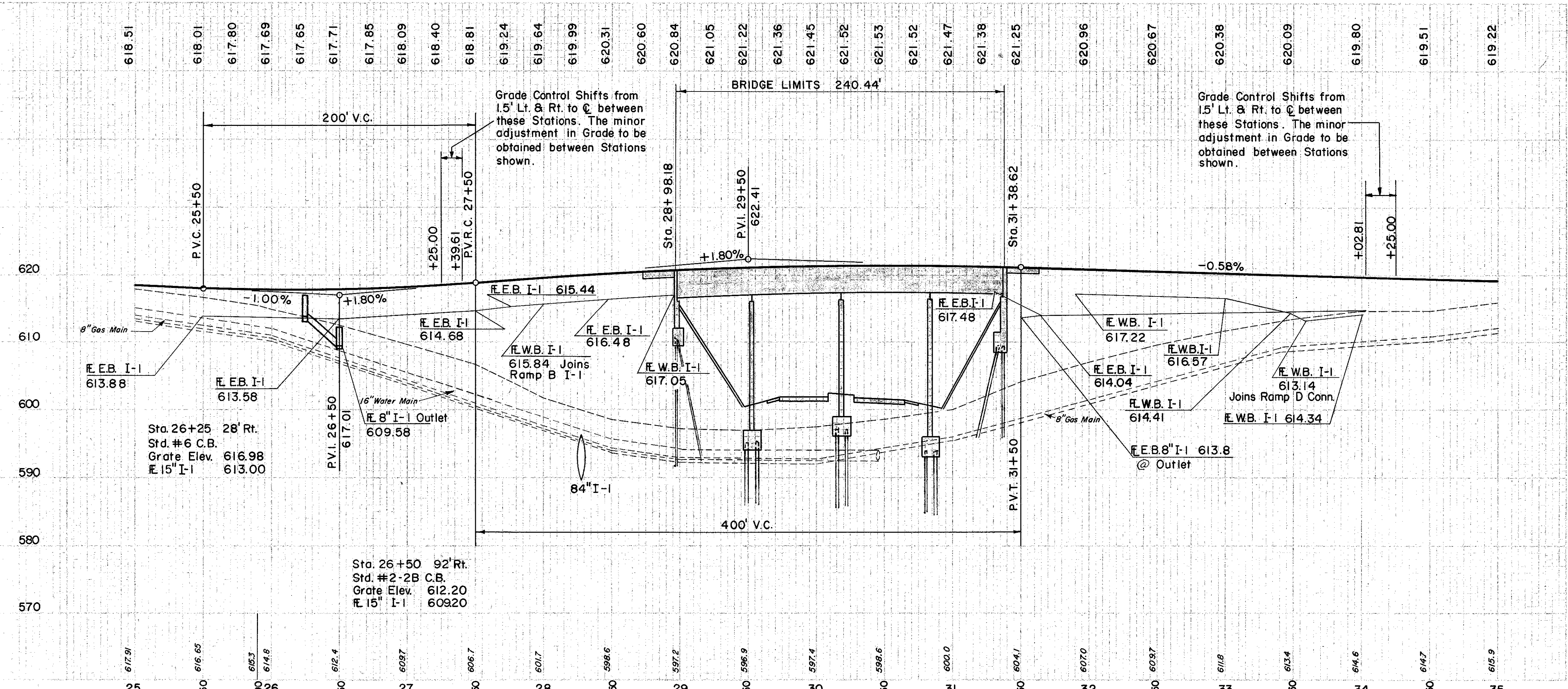
WATER MAIN RELOCATION
NOTE: A Temporary Connection shall be made at Sta. 30+17. The existing valves removed, and reset as shown on Sheet 124. After temporary Connection is removed, 10" Pipe shall be plugged or capped.

FOR PAVEMENT DETAILS AND ELEVATIONS SEE SHEETS 157 & 160

FOR PROFILES OF STORM SEWERS SEE SHEET 142

FOR PLAN AND PROFILES OF RAMPS SEE SHEETS 138 - 141

FOR DETAILS OF TEMPORARY RUNAROUND SEE SHEET 155



DRAINAGE

REF. NO.	STATION	SIDE	12" PIPE CLASS C-1 M-6-4(c)		6" PIPE CLASS I-3		8" PIPE CLASS F-1	6" TEE	6" 60° WYE	6" 60° BEND	L-10 SODDING	L-10 SOD FOR SPECIAL BERM & SLOPE PROTECT	E-12 PIPE REMOVED 15" & UNDER	
			DEEP	SHALLOW	DEEP	SHALLOW								EA.
I-D	25+68	26+06	Lt.	40										
2-D	27+94	28+98	Lt.			104								
3-D	25+50	28+46	Rt.			296								
4-D	31+90	34+00	Lt.			110								
5-D	31+40	34+00	Rt.			280								
6-D	25+00	25+68	Lt.								40			
7-D	26+06	27+50	Lt.								86			
8-D	29+30	34+05	Lt.										670	
9-D	28+50	31+80	Lt.									230		
TOTAL				40		510		80	2	1	1	126	230	670

PAVEMENT

REF. NO.	STATION	FROM	TO	SIDE	DESCRIPTION	QTY
I-1	25+00	27+39.61	28+98.18	Lt.	REINF. ASP. CONC. SURFACE COURSE	768
I-2	27+39.61	28+98.18	29+31.77	Lt.	REINF. ASP. CONC. SURFACE COURSE	1367
I-3	28+98.18	29+31.77	30+17.00	Lt.	REINF. ASP. CONC. SURFACE COURSE	9
I-4	29+31.77	30+17.00	31+19.44	Lt.	REINF. ASP. CONC. SURFACE COURSE	6
I-5	30+17.00	31+19.44	31+77.00	Lt.	REINF. ASP. CONC. SURFACE COURSE	19
I-6	31+19.44	31+77.00	34+02.81	Lt.	REINF. ASP. CONC. SURFACE COURSE	39
I-7	25+00	27+39.61	28+98.18	Lt.	AGGR. BASE COURSE	209
I-8	27+39.61	28+98.18	29+31.77	Lt.	AGGR. BASE COURSE	148
I-9	28+98.18	29+31.77	30+17.00	Lt.	AGGR. BASE COURSE	265
I-10	29+31.77	30+17.00	31+19.44	Lt.	AGGR. BASE COURSE	76
I-11	30+17.00	31+19.44	31+77.00	Lt.	AGGR. BASE COURSE	698
I-12	31+19.44	31+77.00	34+02.81	Lt.	AGGR. BASE COURSE	34
TOTAL						143550

UTILITIES

REF. NO.	STATION	FROM	TO	SIDE	DESCRIPTION	QTY
I-124.03					CAST IRON FITTINGS	2
I-124.04					FIRE HYDRANTS	1
I-124.08					SERVICE STOPS	1
I-124.11					WATER METERS	1
I-124.12					STOP BOXES	1
I-124.13					NEW MAIN	456
I-124.14					REMOVED MAIN	1
I-124.15					REMOVED MAIN	1
I-124.16					REMOVED MAIN	1
I-124.17					REMOVED MAIN	1
I-124.18					REMOVED MAIN	1
I-124.19					REMOVED MAIN	1
I-124.20					REMOVED MAIN	1
I-124.21					REMOVED MAIN	1
I-124.22					REMOVED MAIN	1
I-124.23					REMOVED MAIN	1
I-124.24					REMOVED MAIN	1
I-124.25					REMOVED MAIN	1
I-124.26					REMOVED MAIN	1
I-124.27					REMOVED MAIN	1
I-124.28					REMOVED MAIN	1
I-124.29					REMOVED MAIN	1
I-124.30					REMOVED MAIN	1
I-124.31					REMOVED MAIN	1
I-124.32					REMOVED MAIN	1
I-124.33					REMOVED MAIN	1
I-124.34					REMOVED MAIN	1
I-124.35					REMOVED MAIN	1
I-124.36					REMOVED MAIN	1
I-124.37					REMOVED MAIN	1
I-124.38					REMOVED MAIN	1
I-124.39					REMOVED MAIN	1
I-124.40					REMOVED MAIN	1
I-124.41					REMOVED MAIN	1
I-124.42					REMOVED MAIN	1
I-124.43					REMOVED MAIN	1
I-124.44					REMOVED MAIN	1
I-124.45					REMOVED MAIN	1
I-124.46					REMOVED MAIN	1
I-124.47					REMOVED MAIN	1
I-124.48					REMOVED MAIN	1
I-124.49					REMOVED MAIN	1
I-124.50					REMOVED MAIN	1
I-124.51					REMOVED MAIN	1
I-124.52					REMOVED MAIN	1
I-124.53					REMOVED MAIN	1
I-124.54					REMOVED MAIN	1
I-124.55					REMOVED MAIN	1
I-124.56					REMOVED MAIN	1
I-124.57					REMOVED MAIN	1
I-124.58					REMOVED MAIN	1
I-124.59					REMOVED MAIN	1
I-124.60					REMOVED MAIN	1
I-124.61					REMOVED MAIN	1
I-124.62					REMOVED MAIN	1
I-124.63					REMOVED MAIN	1
I-124.64					REMOVED MAIN	1
I-124.65					REMOVED MAIN	1
I-124.66					REMOVED MAIN	1
I-124.67					REMOVED MAIN	1
I-124.68					REMOVED MAIN	1
I-124.69					REMOVED MAIN	1
I-124.70					REMOVED MAIN	1
I-124.71					REMOVED MAIN	1
I-124.72					REMOVED MAIN	1
I-124.73					REMOVED MAIN	1
I-124.74					REMOVED MAIN	1
I-124.75					REMOVED MAIN	1
I-124.76					REMOVED MAIN	1
I-124.77					REMOVED MAIN	1
I-124.78					REMOVED MAIN	1
I-124.79					REMOVED MAIN	1
I-124.80					REMOVED MAIN	1
I-124.81					REMOVED MAIN	1
I-124.82					REMOVED MAIN	1
I-124.83					REMOVED MAIN	1
I-124.84					REMOVED MAIN	1
I-124.85					REMOVED MAIN	1
I-124.86					REMOVED MAIN	1
I-124.87					REMOVED MAIN	1
I-124.88					REMOVED MAIN	1
I-124.89					REMOVED MAIN	1
I-124.90					REMOVED MAIN	1
I-124.91					REMOVED MAIN	1
I-124.92					REMOVED MAIN	1
I-124.93					REMOVED MAIN	1
I-124.94					REMOVED MAIN	1
I-124.95					REMOVED MAIN	1
I-124.96					REMOVED MAIN	1
I-124.97					REMOVED MAIN	1
I-124.98					REMOVED MAIN	1
I-124.99					REMOVED MAIN	1
I-124.100					REMOVED MAIN	1
TOTAL						2375

ROADWAY

REF. NO.	STATION	FROM	TO	SIDE	DESCRIPTION	QTY
I-15					GUARD RAIL	750
E-8					PAVT. REMOVAL	750
I-1	27+78	28+53	Rt.		PAVT. REMOVAL	750
2-R	31+19	31+94	Rt.		PAVT. REMOVAL	87.5
3-R	31+83	32+705	Lt.		PAVT. REMOVAL	2177.6
4-R	25+00	35+00	Lt.		PAVT. REMOVAL	2375
TOTAL						21776

EXCAVATION 1,639 C.Y.
EQUIPMENT 19,977 C.Y.
REPAIRMENT 20 23,973 C.Y.