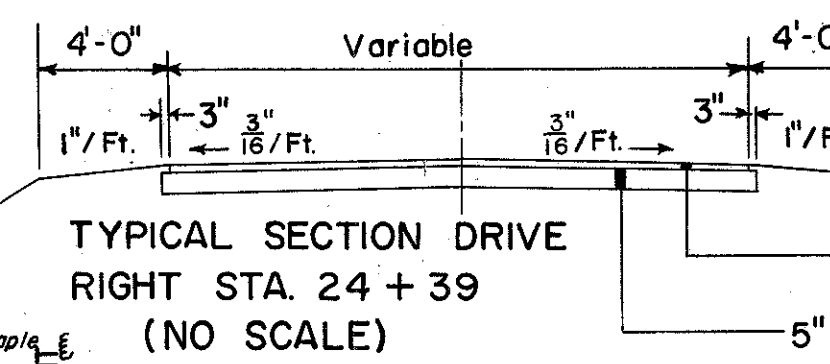


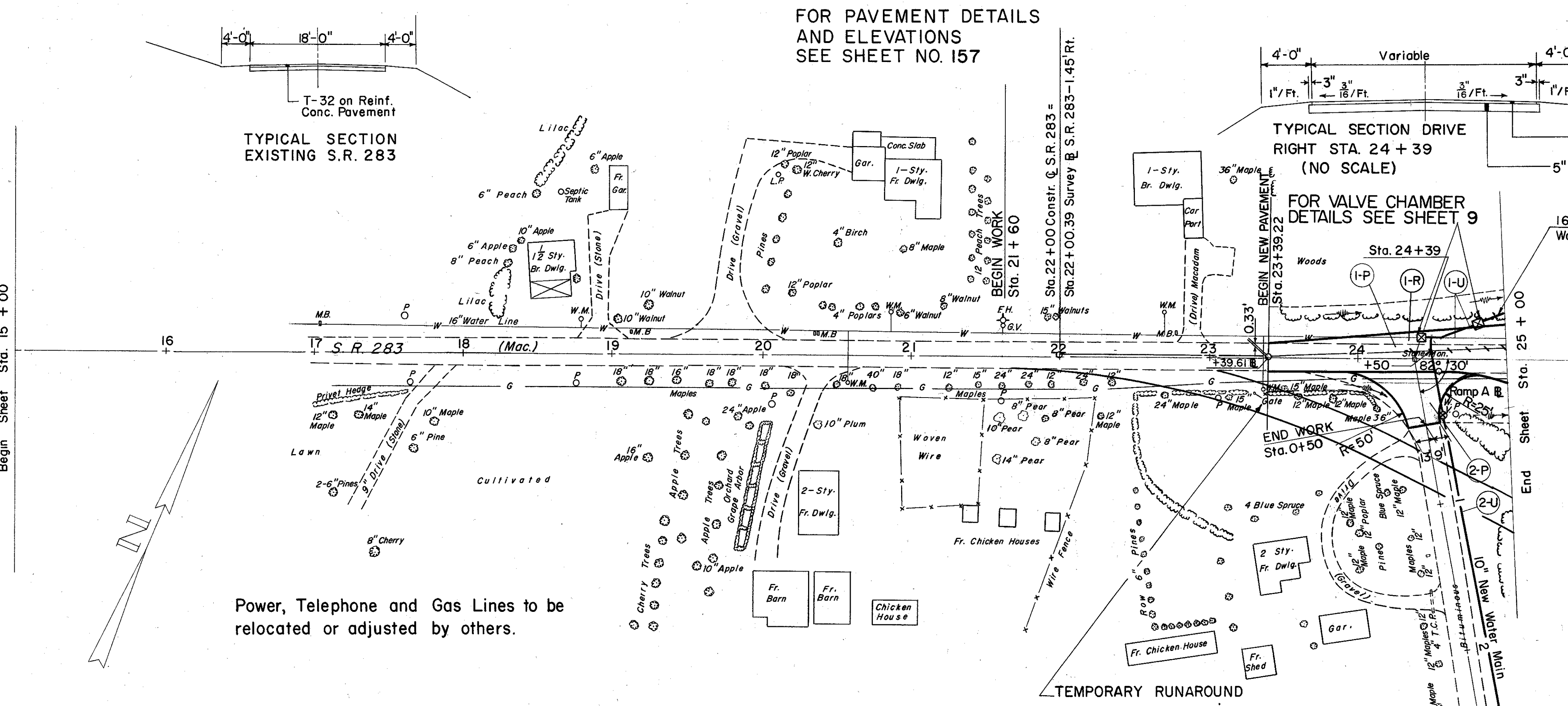
FOR PAVEMENT DETAILS
AND ELEVATIONS
SEE SHEET NO. 157



TYPICAL SECTION
EXISTING S.R. 283

Begin Sheet Sta. 15 + 00

Power, Telephone and Gas Lines to be relocated or adjusted by others.



TEMPORARY RUNAROUND
FOR DETAILS SEE SHEET 155

NOTE: Water Valves to be used on this Sheet
Shall be removed from existing
S.R. 283 & Heisley Road intersection
after temporary connection is made. See Sheet 125

(P) PAVEMENT

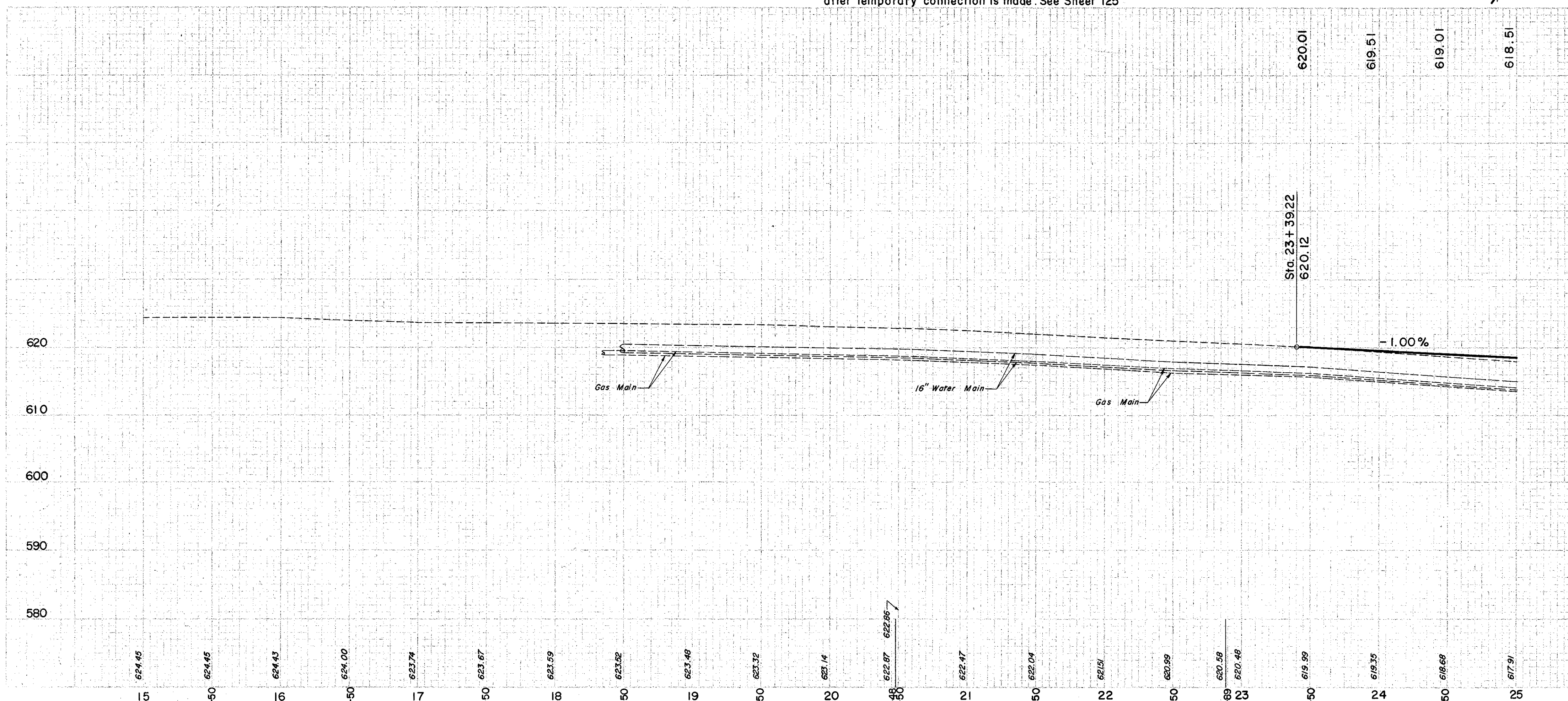
REF. NO.	STATION	SIDE	B-19	B-35	I-9	I-18	I-22	T-30	T-35		
			AGGR. BASE COURSE	ASPH. CONC. LEVEL COURSE	ASPH. CONC. BASE COURSE	STONE U-DRAIN NO. 2	STAB. CRUSH. AGGR.	SUB-BASE	BIT. PRIME COAT	ASPH. CONC. SURF. COURSE	ASPH. CONC. SURF. COURSE
	FROM TO		C.Y.	C.Y.	C.Y.	L.F.	C.Y.	C.Y.	Gal.	C.Y.	C.Y.
1-P	23+39.22 25+00	-	103	22	35	70	15	67	179	15	9
2-P	24+39	Rt.	21								
TOTAL			124	22	35	70	15	67	179	15	9

(U) UTILITIES

REF. NO.	STATION	SIDE	I-124.03			I-124.04		I-8
			10" NEW WATER MAIN	CAST IRON FITTINGS		10" WATER MAIN REMOVED & RELAYED	16" WATER MAIN REMOVED & RELAYED	SPECIAL VALVE CHAMBER
	FROM TO		L.F.	Eq.	Eq.	L.F.	L.F.	Eq.
1-U	24+45 25+00	Lt.	265	1	1	10	52	2
2-U	24+50							

(R) ROADWAY

REF. NO.	STATION	SIDE	E-8
			PAVT. REMOVAL
	FROM TO		S.Y.
1-R	23+39.22 25+00	-	322



EXCAVATION	317 C.Y.
EMBANKMENT	42 C.Y.
EMBANKMENT - 20"	50 C.Y.