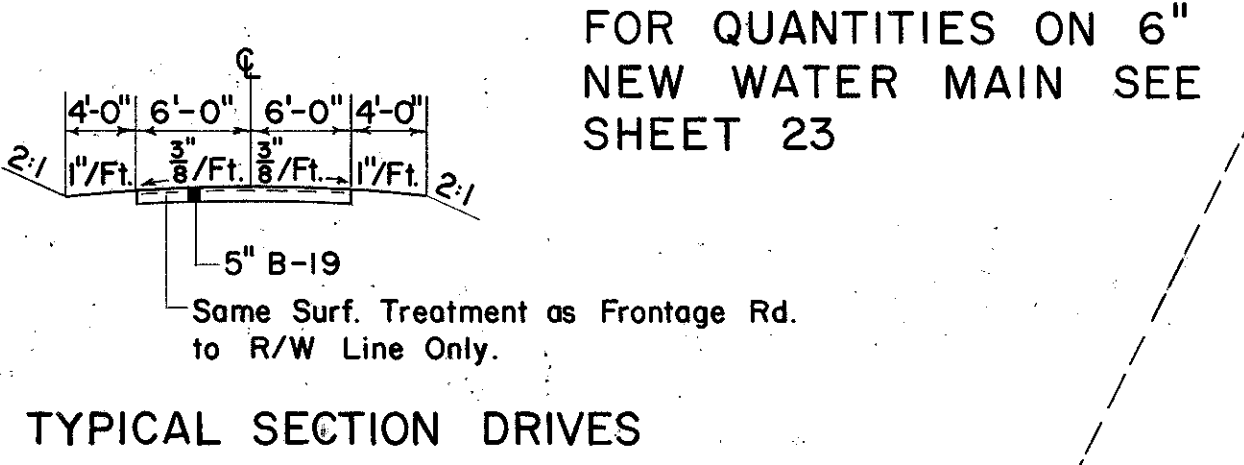
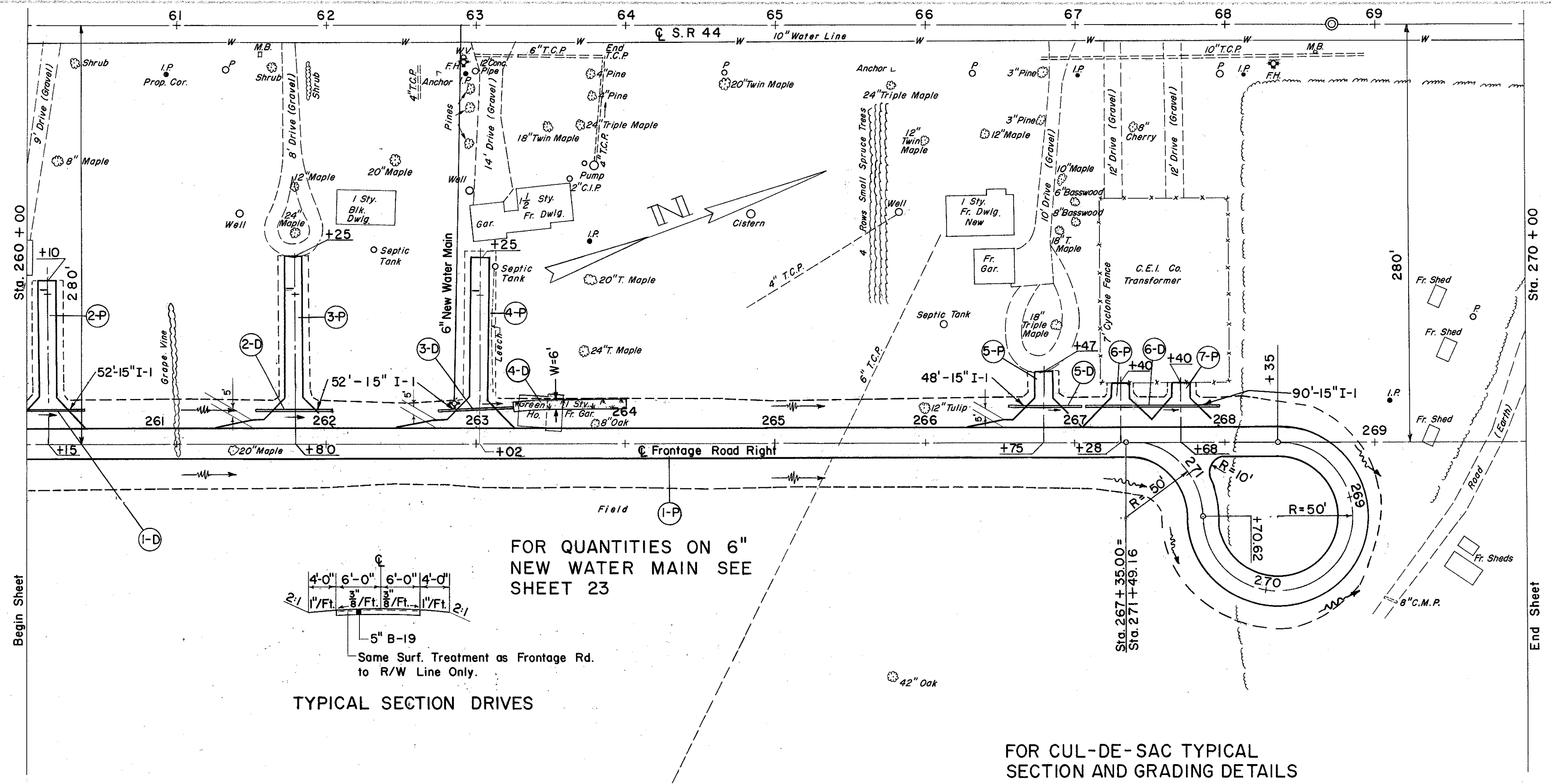


LAKE COUNTY  
LAK-44-722



FOR QUANTITIES ON 6" NEW WATER MAIN SEE SHEET 23

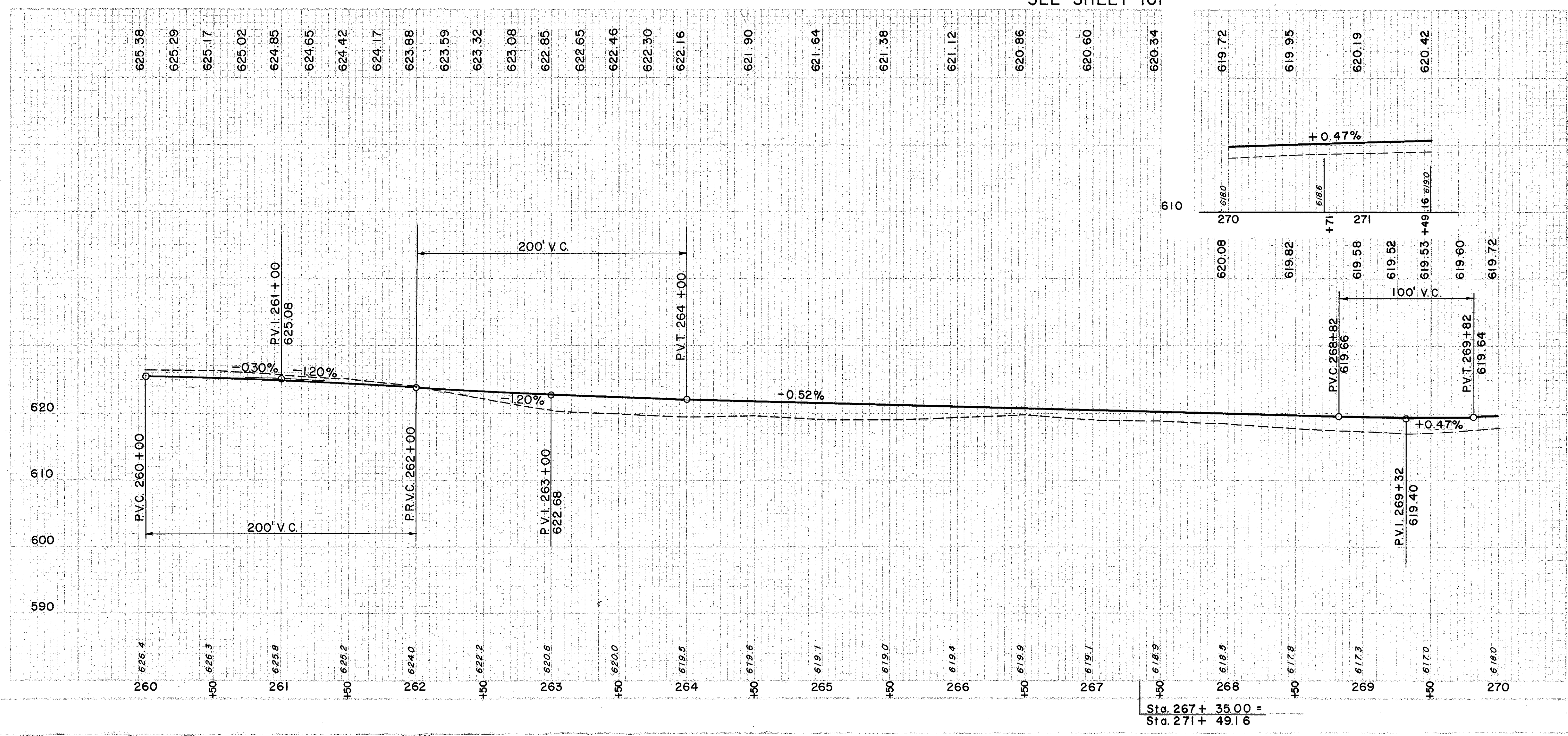
FOR CUL-DE-SAC TYPICAL SECTION AND GRADING DETAILS SEE SHEET 101

(P) PAVEMENT

REF. NO.	STATION	SIDE	AGGR. BASE COURSE	I-9 U-DRAIN NO. 2	I-22 SUBBASE	T-30 BIT. PRIME COAT	T-32 BIT. MAT'L. FOR ROAD MIX	# 46 AGGR. FOR ROAD MIX	# 6 AGGR. FOR CHOKE	# 6 AGGR. FOR SEAL COAT	BIT. MAT'L. FOR SEAL COAT	
												C.Y.
1-P	260+00	271+49.16	-	352	396	281	998	2745	139.8	10.0	20.0	624
2-P	DRIVE	260+15	Lt.	26	-	-	33	90	4.6	0.3	0.7	20
3-P	"	261+80	Lt.	29	-	-	33	90	4.6	0.3	0.7	21
4-P	"	263+00	Lt.	29	-	-	32	90	4.6	0.4	0.6	20
5-P	"	266+75	Lt.	14	-	-	33	90	4.6	0.3	0.7	21
6-P	"	267+28	Lt.	11	-	-	28	76	3.9	0.3	0.6	17
7-P	"	267+68	Lt.	12	-	-	27	76	3.9	0.3	0.6	18
TOTAL				473	396	281	1184	3257	166.0	11.9	23.9	741

(D) DRAINAGE

REF. NO.	STATION	SIDE	I-1 15" PIPE CLASS C-1 M-6.4(c)	L-10 SODDING	
				L.F.	S.Y.
1-D	259+89	260+41	Lt.	52	
2-D	261+54	262+06	Lt.	52	
3-D	262+75	263+27	Lt.	52	
4-D	263+27	264+00	Lt.		48
5-D	266+53	267+01	Lt.	48	
6-D	267+03	267+93	Lt.	90	
TOTAL				294	48



EXCAVATION	=	1,170 C.Y.
EMBANKMENT	=	1,800 C.Y.
EMBANKMENT 20%	=	2,160 C.Y.

FRONTAGE ROAD RIGHT STA. 260+00 TO STA. 271+49.16

Sta. 267 + 35.00 =  
Sta. 271 + 49.16