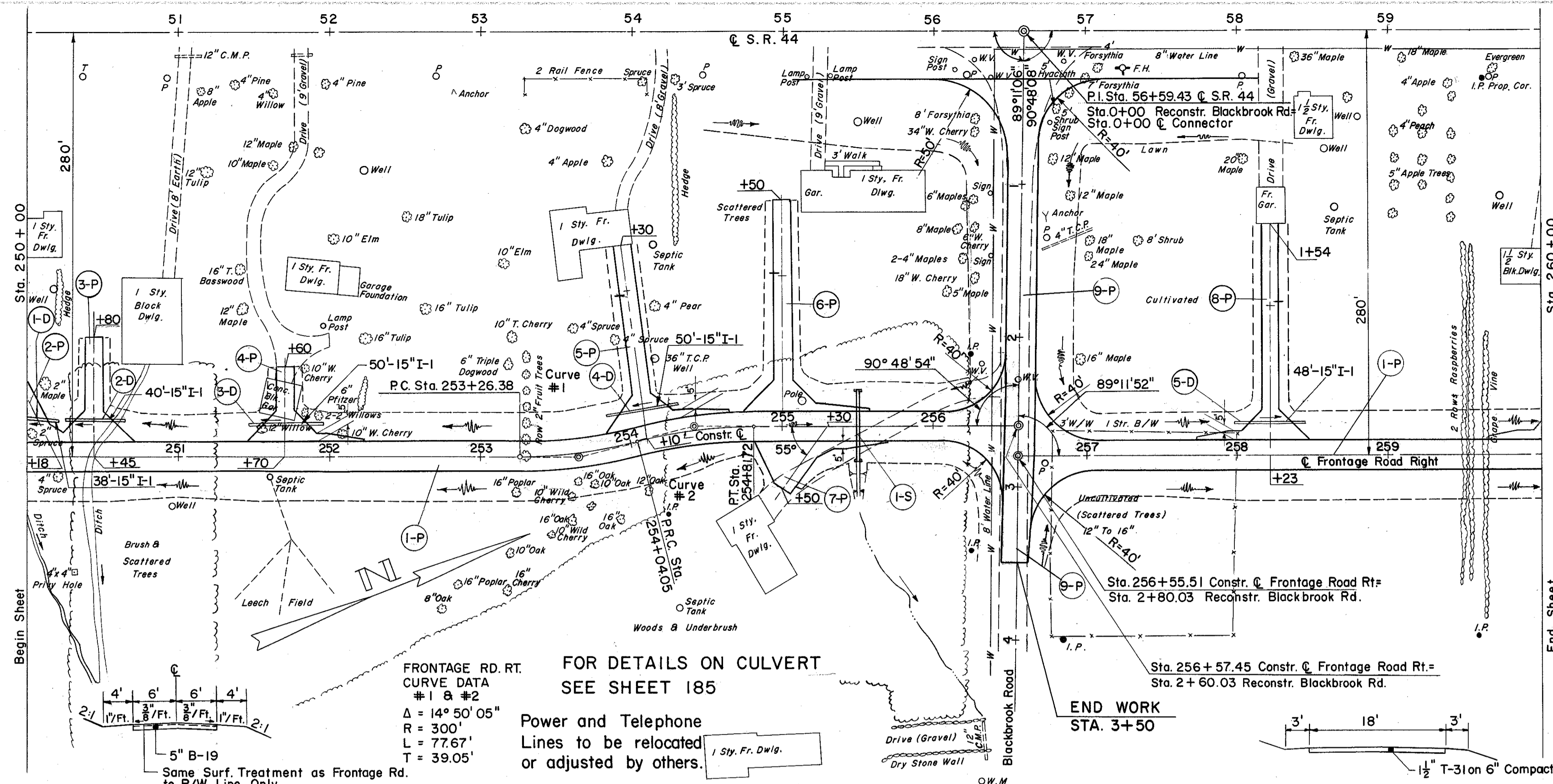


LAKE COUNTY
LAK-44-722



(S) STRUCTURES

REF. NO.	STATION	SIDE	PIPE CLASS		
			I-1	I-2	L-10
	FROM	TO	L.F.	C.Y.	S.Y.
I-S	255+50	-	48	1.4	10

(P) PAVEMENT

REF. NO.	STATION	SIDE	B-19		I-9		I-22		T-30		T-32	
			AGGR. BASE COURSE	STONE U-DRAIN NO. 2	SUB-BASE	BIT. PRIME COAT	BIT. MAT'L. FOR ROAD MIX	# 46 AGGR. FOR ROAD MIX	# 6 AGGR. FOR CHOKE	# 6 AGGR. FOR SEAL COAT	BIT. MAT'L. FOR SEAL COAT	
	FROM	TO	C.Y.	L.F.	C.Y.	GAL.	GAL.	C.Y.	C.Y.	C.Y.	GAL.	
1-P	250+00	260+00	339	333	271	934	2568	130.8	9.3	18.7	584	
2-P	DRIVE	250+18	LT.	32		42	116	5.9	0.4	0.8	26	
3-P	DRIVE	250+45	LT.	18		27	73	3.7	.3	.6	17	
4-P	"	251+70	LT.	17		33	90	4.6	.3	.7	20	
5-P	"	254+10	LT.	30		33	90	4.6	.3	.7	21	
6-P	"	255+00	LT.	34		32	90	4.6	.4	.6	20	
7-P	"	255+30	RT.	16		47	129	6.6	.5	.9	30	
8-P	"	258+23	LT.	34		33	90	4.6	.3	.6	20	
9-P	Blackbrook Rd.	Blackbrook Rd.	117	90	93	322	886	45.1	3.2	6.4	201	
TOTAL			637	423	364	1503	4132	210.5	15.0	30.0	939	

(D) DRAINAGE

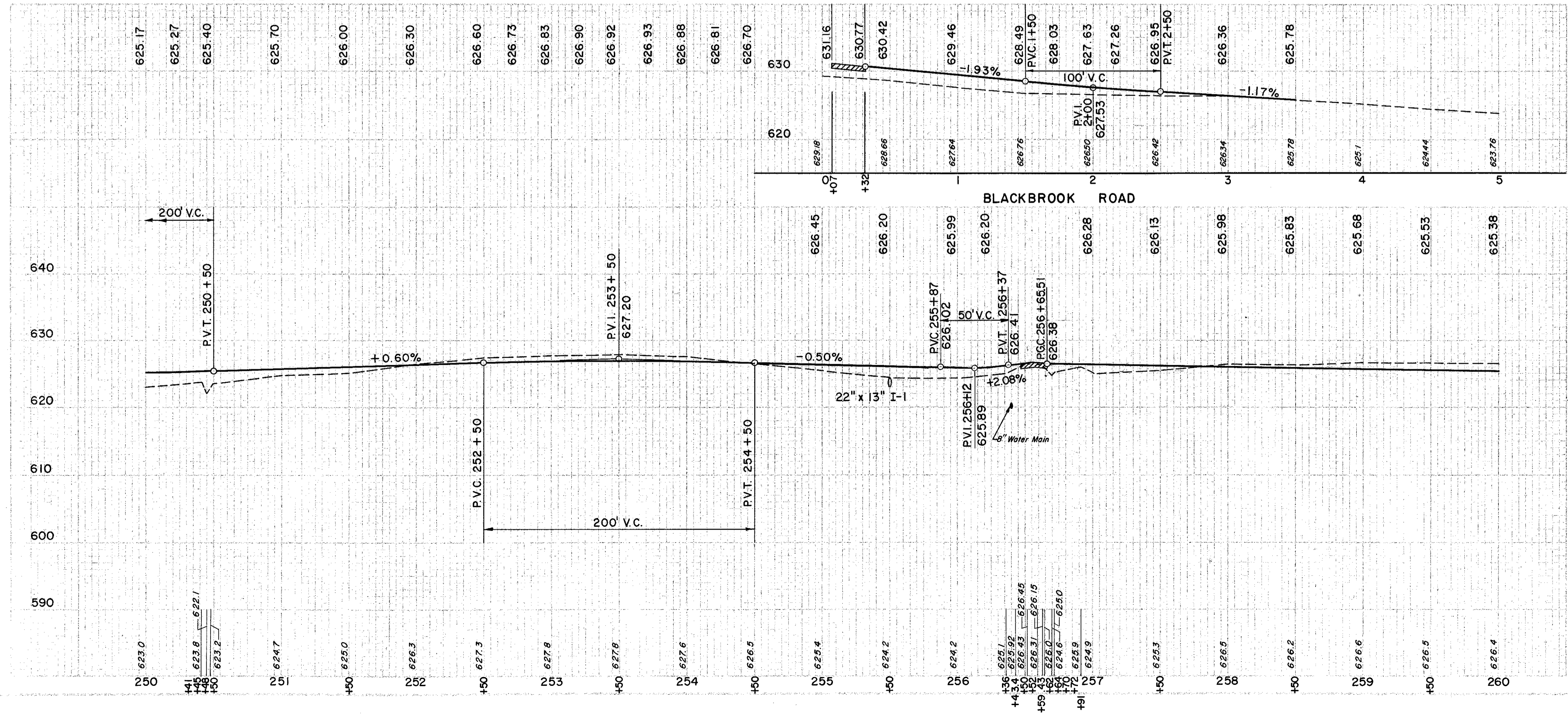
REF. NO.	STATION	SIDE	I-1	
			15" PIPE CLASS	L.F.
	FROM	TO		
1-D	249+82	250+20	LT.	38
2-D	250+27	250+67	LT.	40
3-D	251+48	251+98	LT.	50
4-D	253+88	254+38	LT.	50
5-D	257+98	258+46	LT.	48
TOTAL				226

FRONTAGE RD. RT. CURVE DATA #1 & #2
 $\Delta = 14^\circ 50' 05"$
 $R = 300'$
 $L = 77.67'$
 $T = 39.05'$

FOR DETAILS ON CULVERT SEE SHEET 185
 Power and Telephone Lines to be relocated or adjusted by others.

TYPICAL SECTION DRIVES

TYPICAL SECTION EXISTING BLACKBROOK RD.



BLACKBROOK ROAD

EXCAVATION	=	228 C.Y.
EMBANKMENT	=	379 C.Y.
EMBANKMENT +20%	=	455 C.Y.

EXCAVATION	2041 C.Y.
EMBANKMENT	296 C.Y.
EMBANKMENT 20%	355 C.Y.

RECONSTR. BLACKBROOK ROAD STA. 0+00 TO STA. 3+50
 FRONTAGE ROAD RIGHT STA. 250+00 TO STA. 260+00