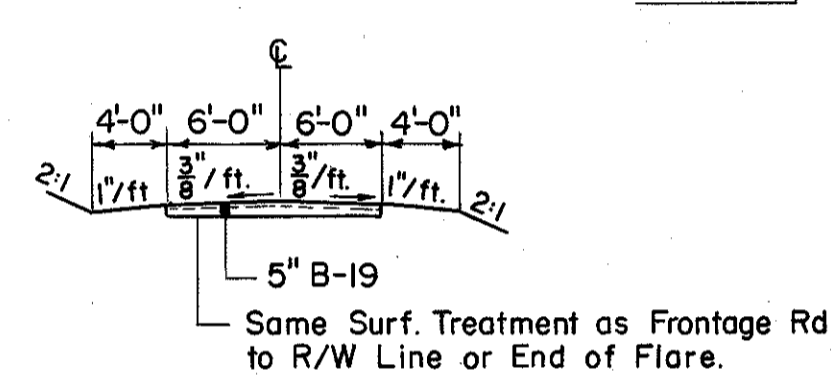
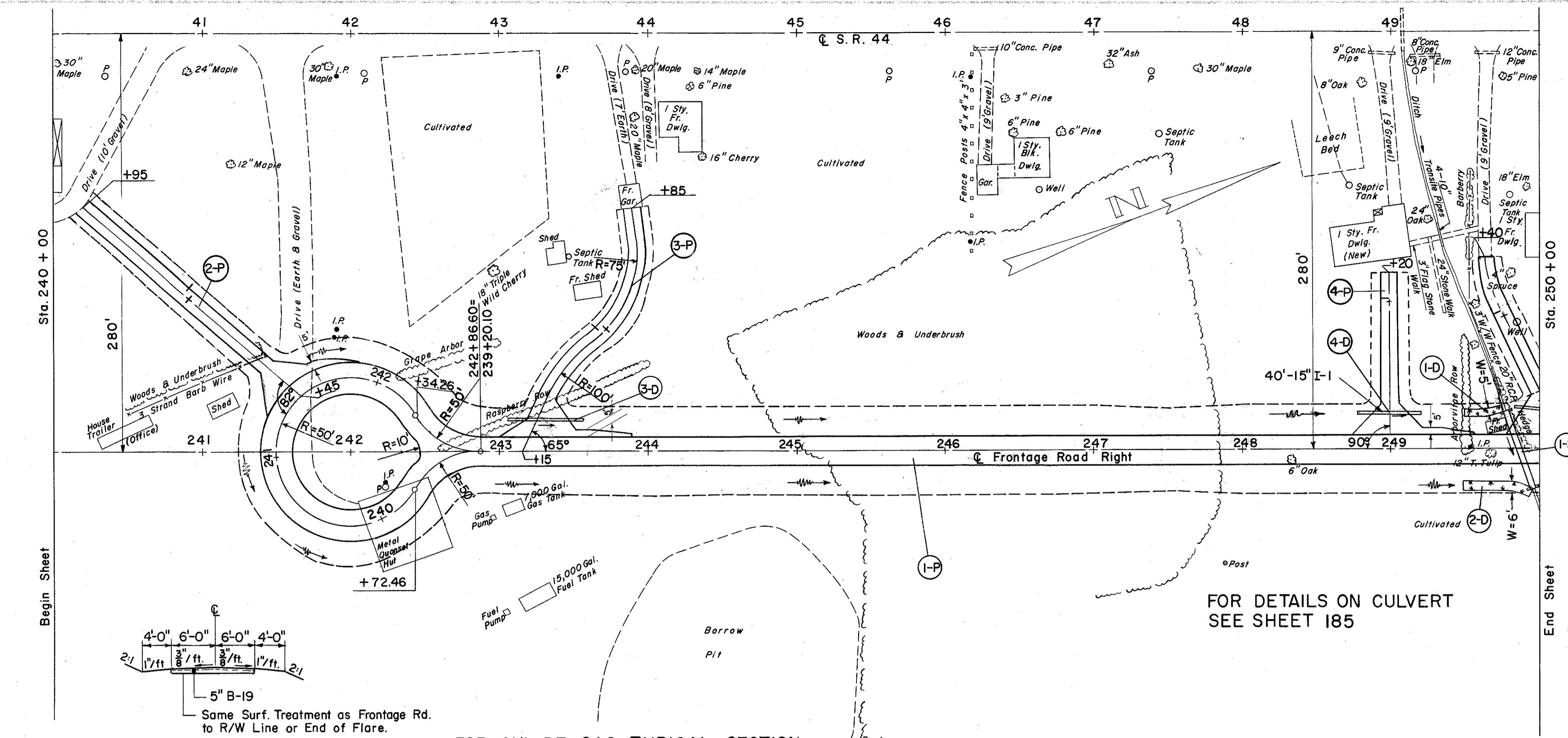


LAKE COUNTY
LAK-44-7.22



FOR CUL-DE-SAC TYPICAL SECTION AND GRADING DETAILS SEE SHEET 101

FOR DETAILS ON CULVERT SEE SHEET 185

(D) DRAINAGE

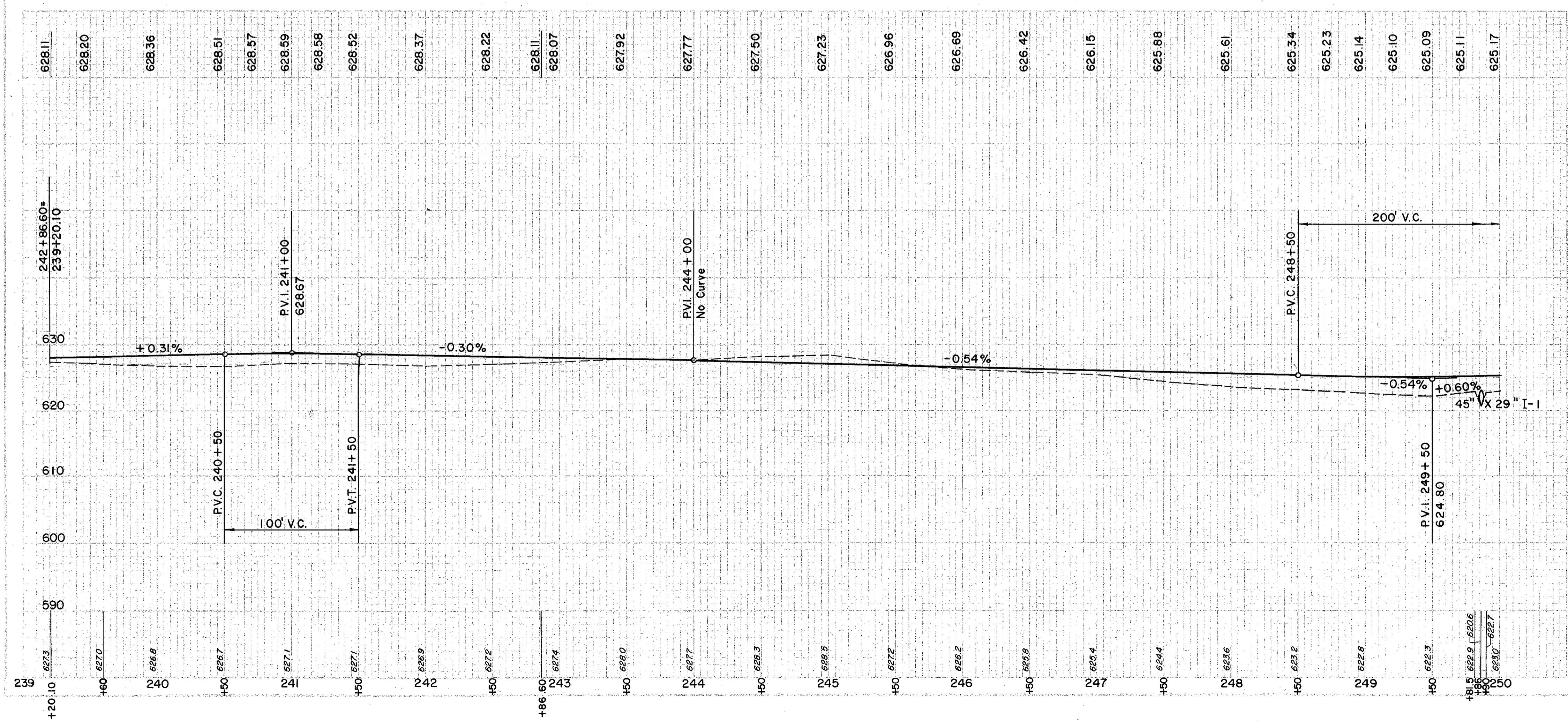
REF NO.	STATION	SIDE	L-10		I-1	
			SODDING	PIPE CLASS	15" PIPE CLASS	C-1 M-64(c)
	FROM	TO	S.Y.			
1-D	249+50	249+73	LT	13		
2-D	249+50	249+97	RT	31		
3-D	243+05	243+57	LT		52	
4-D	248+78	249+18	LT		40	
TOTAL				44	92	

(S) STRUCTURES

REF NO.	STATION	SIDE	I-1		I-2		L-10	
			45" x 29" PIPE CLASS	MASONRY	SODDING			
	FROM	TO	L.F.	C.Y.	S.Y.			
1-S	249+85	-	56	1.5	13			

(P) PAVEMENT

REF NO.	STATION	SIDE	B-19		I-9		I-22		T-30		T-32				
			AGGR. BASE COURSE	STONE U-DRAIN NO. 2	SUBBASE	BIT. PRIME COAT	BIT. MAT'L. FOR ROAD MIX	#46 AGGR. FOR ROAD MIX	#6 AGGR. FOR CHOKE	#6 AGGR. FOR SEAL COAT	BIT. MAT'L. FOR SEAL COAT				
	FROM	TO	C.Y.	L.F.	C.Y.	Gal.	Gal.	C.Y.	C.Y.	C.Y.	Gal.				
1-P	239+72.46	250+00	342	396	274	945	2598	132.3	9.5	18.9	590				
2-P	Drive	241+45	42			37	103	5.2	0.4	0.8	23				
3-P	Drive	243+15	44			44	120	6.1	0.4	0.9	27				
4-P	Drive	249+00	28			33	90	4.6	0.3	0.7	20				
TOTAL			456	396	274	1059	2911	148.2	10.6	21.3	660				



EXCAVATION	1,229 C.Y.
EMBANKMENT	1,169 C.Y.
EMBANKMENT x 20"	1,403 C.Y.