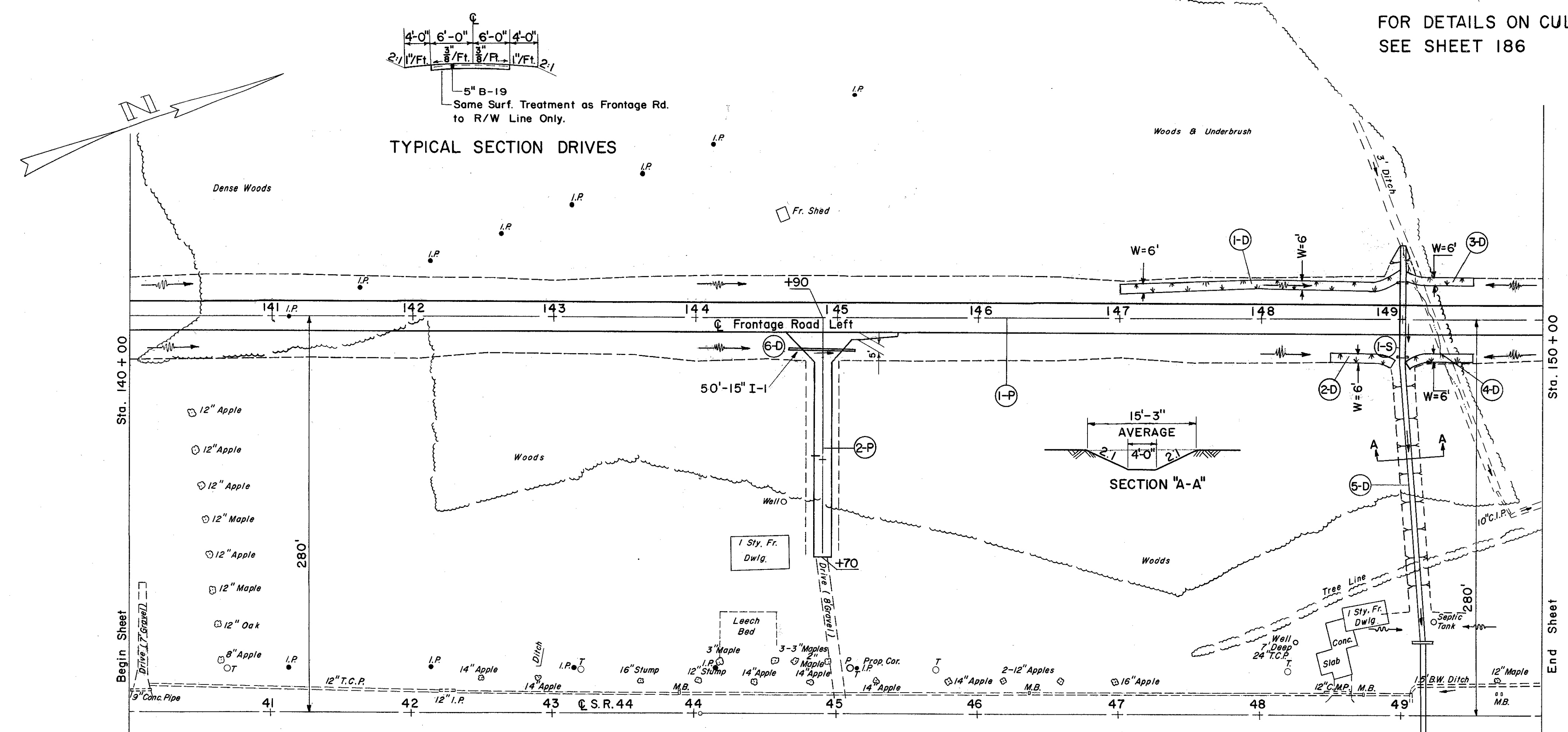


FOR DETAILS ON CULVERT
SEE SHEET 186



(D) DRAINAGE

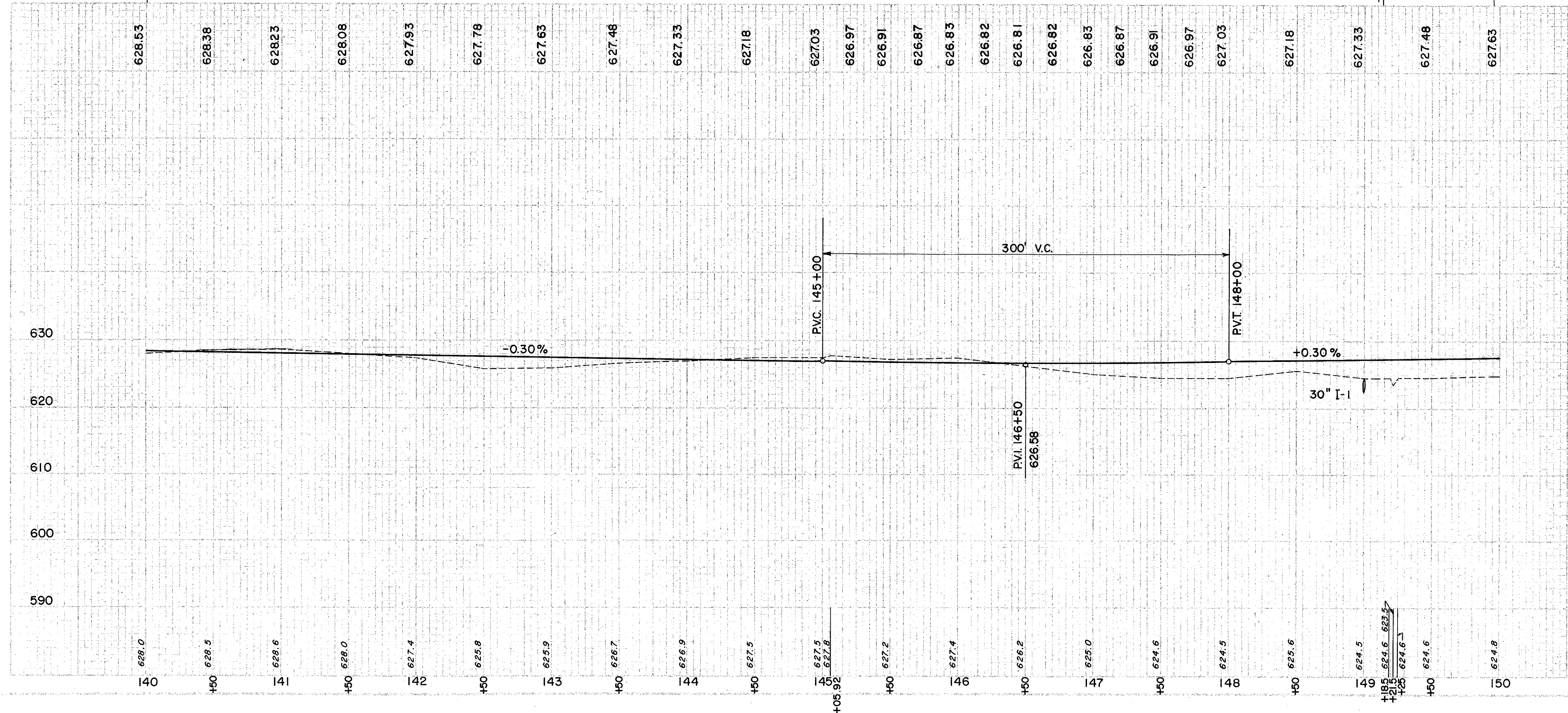
REF. NO.	STATION	SIDE	E-3 CHANNEL EXC.		L-10 SODDING	I-1 15\" PIPE CLASS C-1 M-6.4(c)
			C.Y.	S.Y.	L.F.	
1-D	147+00	149+00	LT		134	
2-D	148+50	148+98	RT		33	
3-D	149+02	149+50	LT		33	
4-D	149+02	149+50	RT		33	
5-D	149+00	149+15	RT	197		
6-D	144+70	145+10	RT		50	50
TOTAL					233	50

(S) STRUCTURES

REF. NO.	STATION	SIDE	E-3 CHANNEL EXC.		L-10 SODDING	I-2 MASONRY	I-1 30\" PIPE CLASS A-1 M-6.6(b) or M-6.8(b)
			C.Y.	S.Y.	C.Y.	L.F.	
1-S	149+00		11	7	2.7	54	

(P) PAVEMENT

REF. NO.	STATION	SIDE	B-19 AGGR. BASE COURSE		I-9 STONE U-DRAIN NO.2	I-22 SUB-BASE	T-30 BIT PRIME COAT	T-30 BIT MAT'L FOR ROAD MIX	#46 AGGR. FOR ROAD MIX	#6 AGGR. FOR CHOKE	#6 AGGR. FOR SEAL COAT	BIT. MAT'L FOR SEAL COAT
			C.Y.	L.F.	C.Y.	GAL.	GAL.	C.Y.	C.Y.	C.Y.	GAL.	
1-P	140+00	150+00	324	360	259	889	2444	124.4	8.9	17.8	556	
2-P	Drive	144+90	37			33	90	4.6	0.3	0.7	20	
TOTAL			361	360	259	922	2534	129.0	9.2	18.5	576	



EXCAVATION	1,452 C.Y.
EMBANKMENT	748 C.Y.
PAVEMENT @ 20\"	898 C.Y.

FRONTAGE ROAD LEFT STA. 140+00 TO STA. 150+00