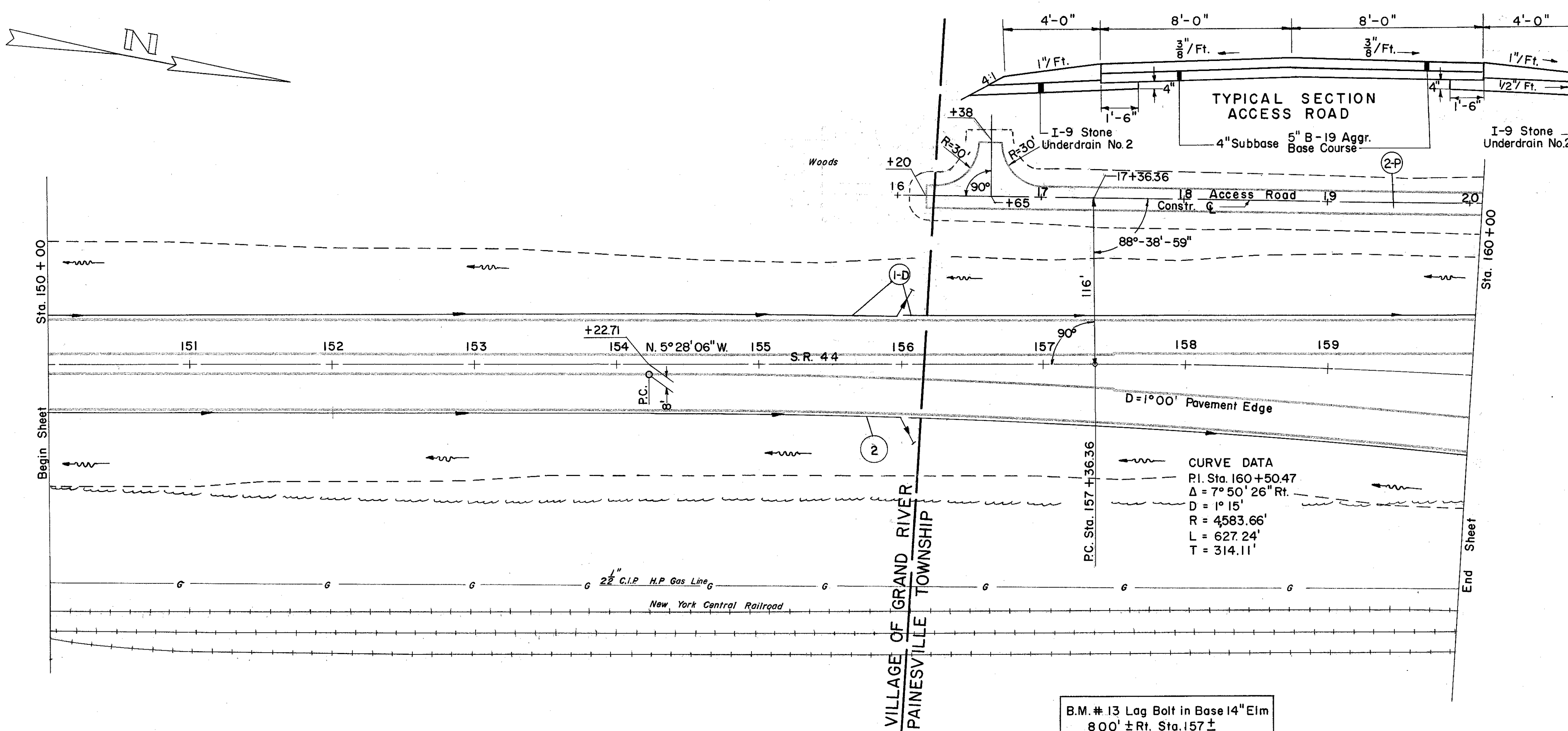
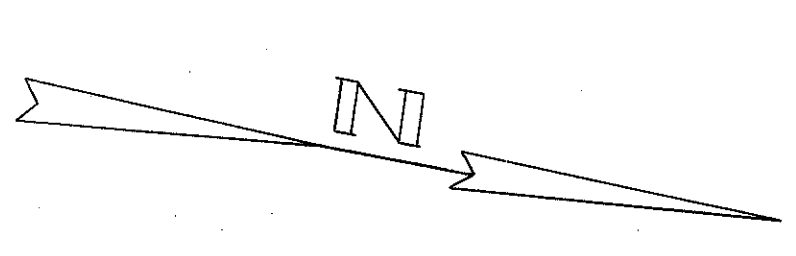


SEE CROSS SECTIONS  
FOR DITCHES LT. & RT.



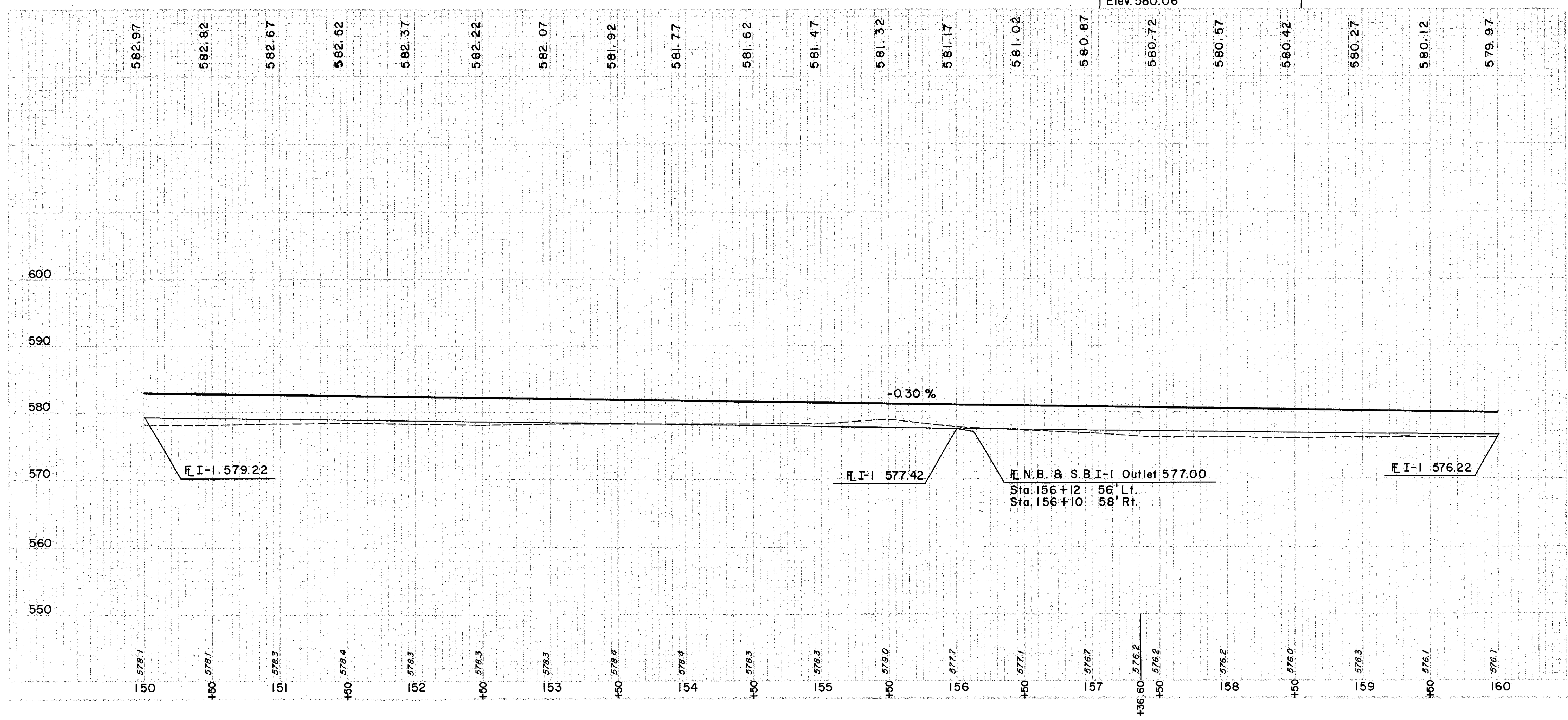
④ DRAINAGE

REF. NO.	STATION	SIDE	I-1		I-5	
			6" PIPE CLASS I-3 SHALLOW	8" PIPE CLASS F-1	6" 60° BEND	EA.
1-D	150+00	160+00	LT.	1,010	10	1
2-D	150+00	160+00	RT.	1,006	10	1
TOTAL				2,016	20	2

⑤ PAVEMENT

REF. NO.	STATION	SIDE	B-21	I-12	I-18	I-22	T-71	T-31	B-19	I-9
			WATER PROOFED AGGR. BASE COURSE	CONC. CURB TYPE 2A	STAB. CRUSHED AGGR.	SUB-BASE	REINF. PORT. CEM. CONC. PAVT. 9"	BIT. MATL.	# 6 AGGR.	AGGR. BASE COURSE
1-P	150+00	160+00	C.Y.	L.F.	C.Y.	C.Y.	S.Y.	GAL.	C.Y.	L.F.
2-P	16+20	20+08	166	1500	287	1282	5578	499	16	110
TOTAL			166	1500	287	1369	5578	499	16	119

B.M. # 13 Lag Bolt in Base 14" Elm  
800' ± Rt. Sta. 157 ±  
Elev. 580.06



ACCESS ROAD

EXCAVATION	=	C.Y.
EMBANKMENT	=	880 C.Y.
EMBANKMENT +20%	=	1056 C.Y.

S.R. 44

EXCAVATION	=	1,739 C.Y.
EMBANKMENT	=	10,529 C.Y.
EMBANKMENT +20%	=	12,635 C.Y.