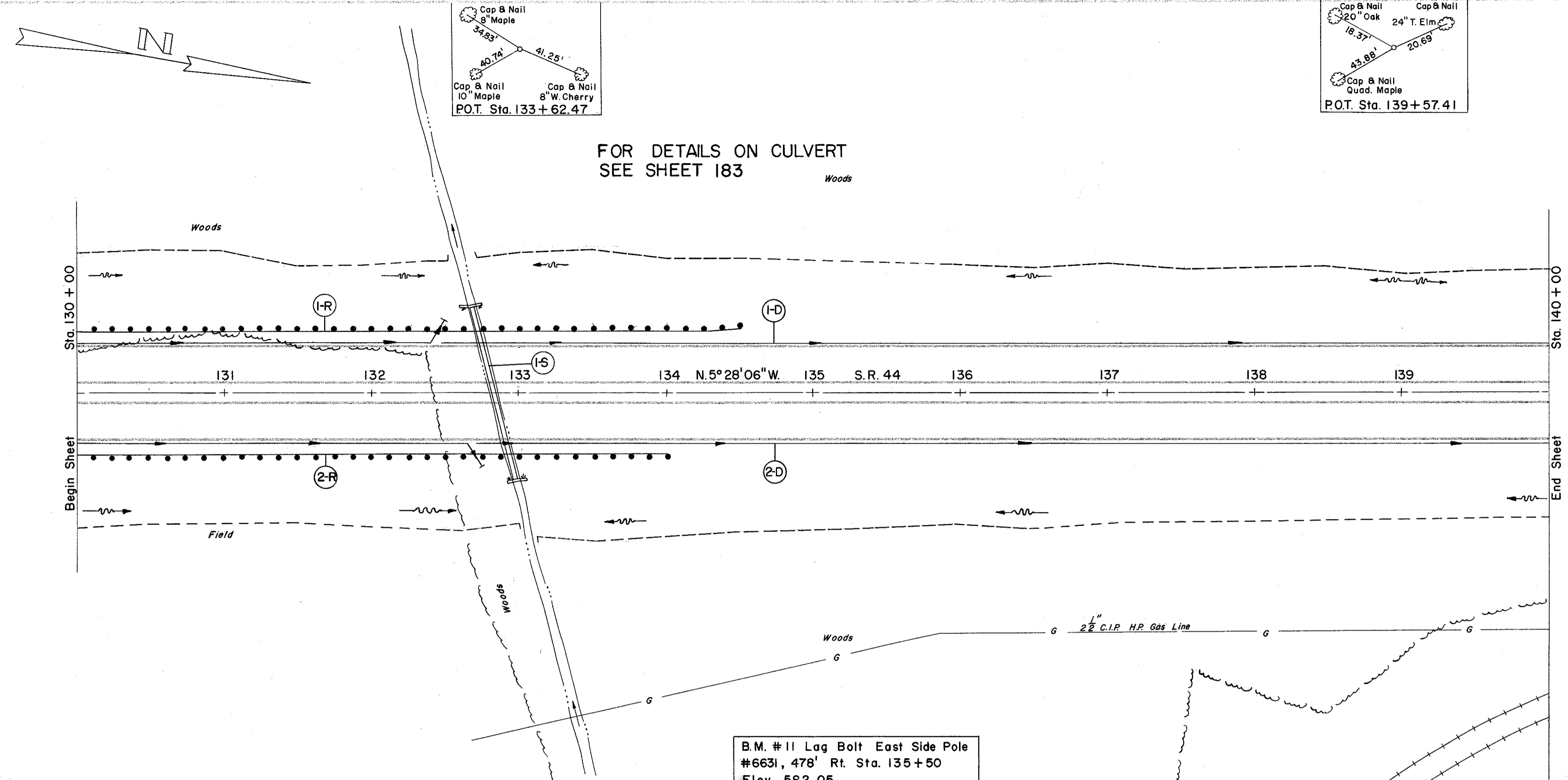


LAKE COUNTY
LAK-44-722



FOR DETAILS ON CULVERT
SEE SHEET 183

④ DRAINAGE

REF. NO.	STATION	SIDE	I-1		
			6" PIPE CLASS I-3 (SHALLOW)	8" PIPE CLASS F-1	6" 60° BEND
	FROM	TO	L.F.	L.F.	EA.
1-D	130+00	140+00	LT	1004	10
2-D	130+00	140+00	RT	1004	10
TOTAL				2008	20

⑤ STRUCTURES

REF. NO.	STATION	SIDE	I-1		
			30" PIPE CLASS A-1 OR M-6.6(b)	SODDING	MASONRY
	FROM	TO	L.F.	S.Y.	C.Y.
1-S	132+82	-	-	124	6

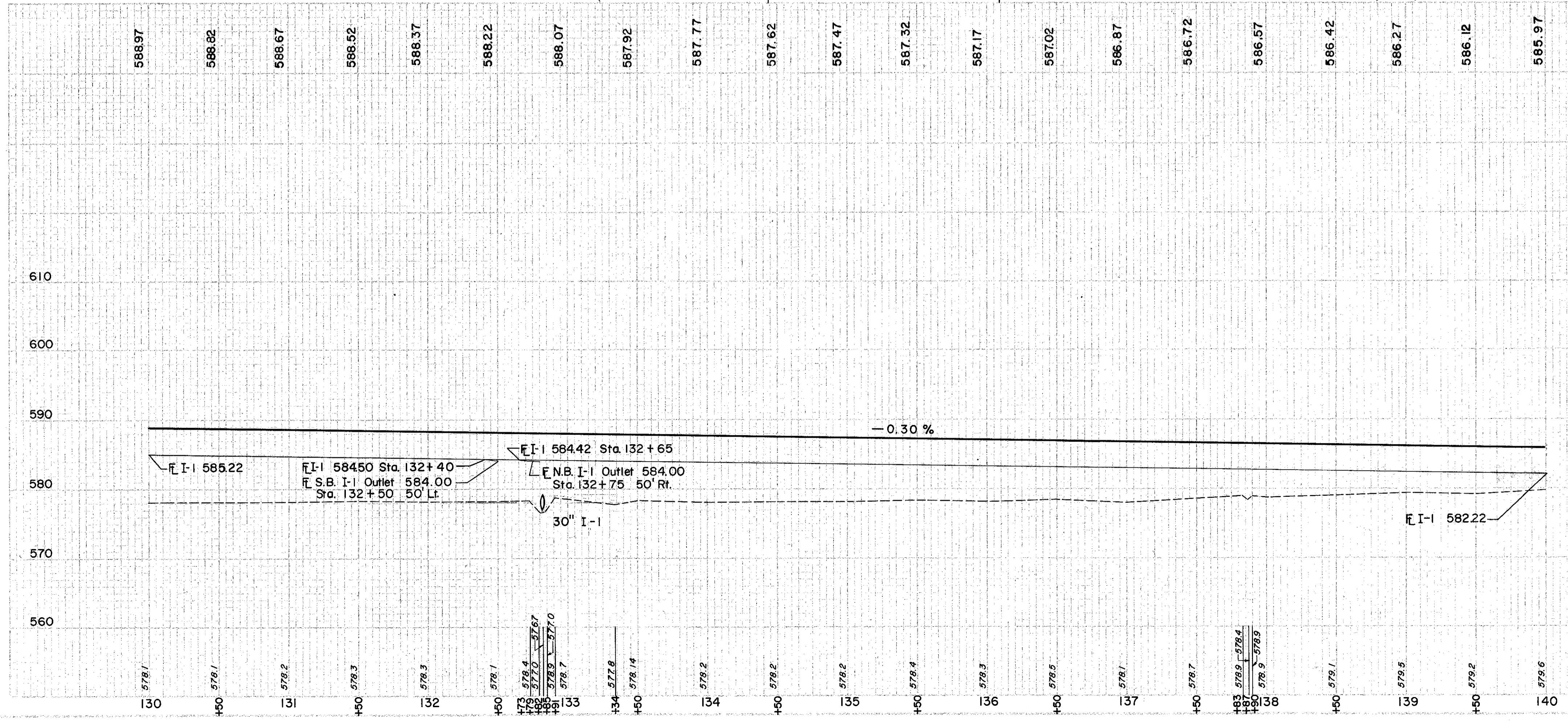
⑥ ROADWAY

REF. NO.	STATION	SIDE	I-15	
			RAIL STEEL BEAM STD. TYPE (DEEP)	L.F.
	FROM	TO	LT	L.F.
1-R	130+00	134+50	LT	450.0
2-R	130+00	134+00	LT	400.0
TOTAL				850.0

⑦ PAVEMENT

REF. NO.	STATION	SIDE	B-21	I-12	I-16	I-22	T-31	T-71
			WATER PROOFED AGGR. BASE COURSE	CONC. CURB TYPE 2A	STAB. CRUSHED AGGR.	SUB-BASE	BIT. MAT'L.	# 6 AGGR.
	FROM	TO	C.Y.	L.F.	C.Y.	C.Y.	GAL.	C.Y.
1-P	130+00	140+00	-	148	2000	255	1274	444
								14.2
								5667

B.M. #11 Lag Bolt East Side Pole
#6631, 478' Rt. Sta. 135+50
Elev. 582.05



EXCAVATION	841 C.Y.
EMBANKMENT	33,371 C.Y.
EMBANKMENT 20"	40,045 C.Y.