

FOR RAMP "B" DETAILS
SEE SHEETS 139 & 158

FOR RAMP "D" DETAILS
SEE SHEETS 141 & 160

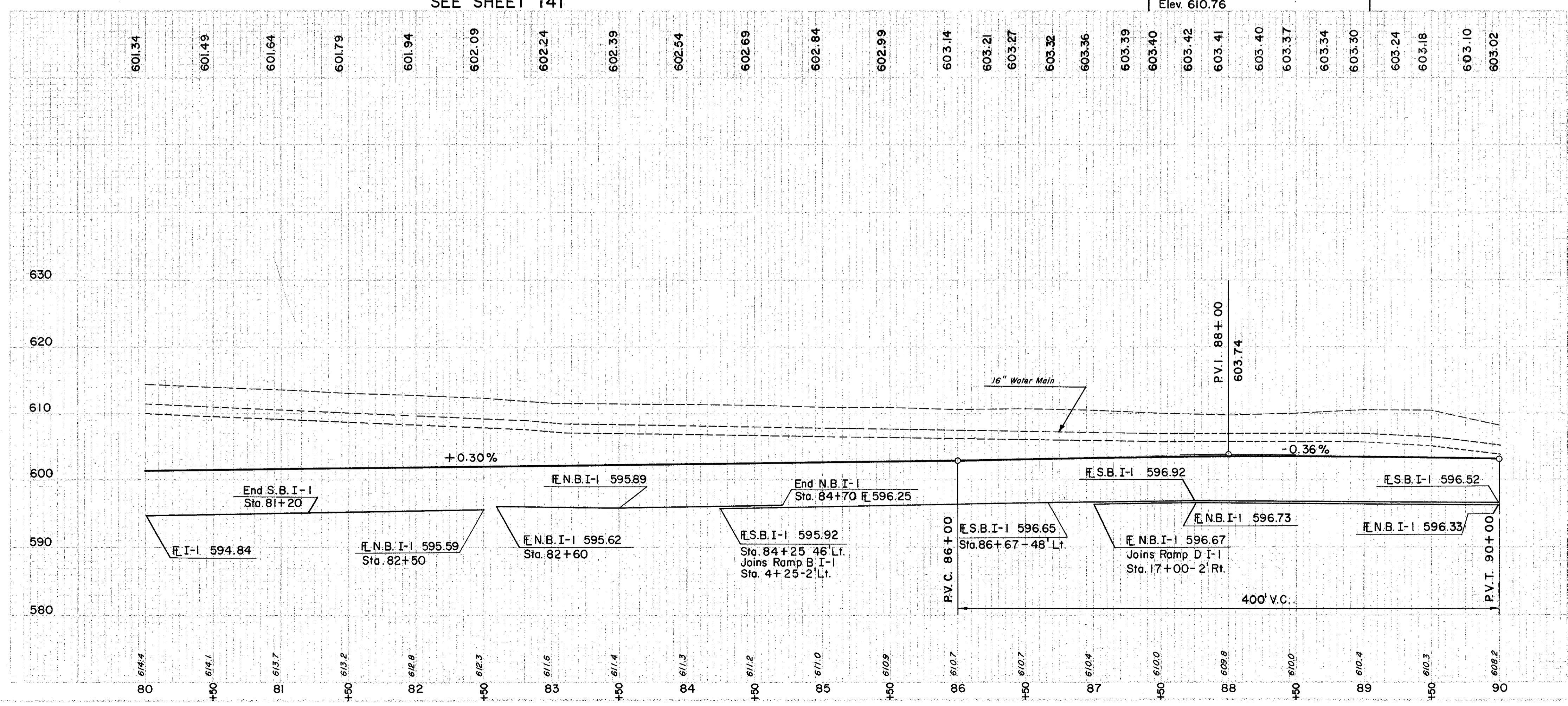
FOR DETAILS & QUANTITIES
OF 16" WATER MAIN RELAID
SEE SHEET 141

FOR CURB DETAILS
SEE SHEET 161

FOR PROFILES OF STORM
SEWERS SEE SHEET 142

Power Lines to be relocated or
adjusted by others.

B.M.#6 Lag Bolt in Base 14" Oak
65' Rt. Sta. 88+54
Elev. 610.76



(D) DRAINAGE

REF. NO.	STATION	S I D E		PIPE CLASS	PIPE CLASS	PIPE CLASS	PIPE CLASS	6" INCR.	6"x8" DOUBLE TEE	STD. #5 CATCH BASIN	STD. #1 MANHOLE	L-10
		FROM	TO									
I-D	81+20	LT	58									
2-D	81+20	83+50	-									
3-D	84+25	90+00	LT	264								
4-D	87+00	90+00	RT		576							
5-D	80+00	81+20	LT		300							
6-D	80+00	84+70	RT		10							
7-D	80+60	84+70	LT		470							
		TOTAL		58	38	264	10	1466				

(P) PAVEMENT

REF. NO.	STATION	S I D E		PIPE CLASS	PIPE CLASS	PIPE CLASS	PIPE CLASS	STAB. CRUSHED	SUB-BASE	BIT MAT'L.	#6 AGGR.	I-71 REINF. PORT. CEM. CONC. PAVT.
		FROM	TO									
B-21	80+00	90+00	-									
I-12	80+00	90+00	-									
I-18	80+00	90+00	-									
I-22	80+00	90+00	-									
I-24	80+00	90+00	-									
I-24.08	80+00	90+00	-									
I-24.11	80+00	90+00	-									
		TOTAL										

(U) UTILITIES

REF. NO.	STATION	S I D E		PIPE CLASS	PIPE CLASS	PIPE CLASS	PIPE CLASS	STAB. CRUSHED	SUB-BASE	BIT MAT'L.	#6 AGGR.	I-71 REINF. PORT. CEM. CONC. PAVT.
		FROM	TO									
I-24.04	80+00	90+00	-									
I-24.08	80+00	90+00	-									
I-24.11	80+00	90+00	-									
		TOTAL										

EXCAVATION	69,445 C.Y.
EMBANKMENT	0 C.Y.
REPAIRMENT	20 C.Y.