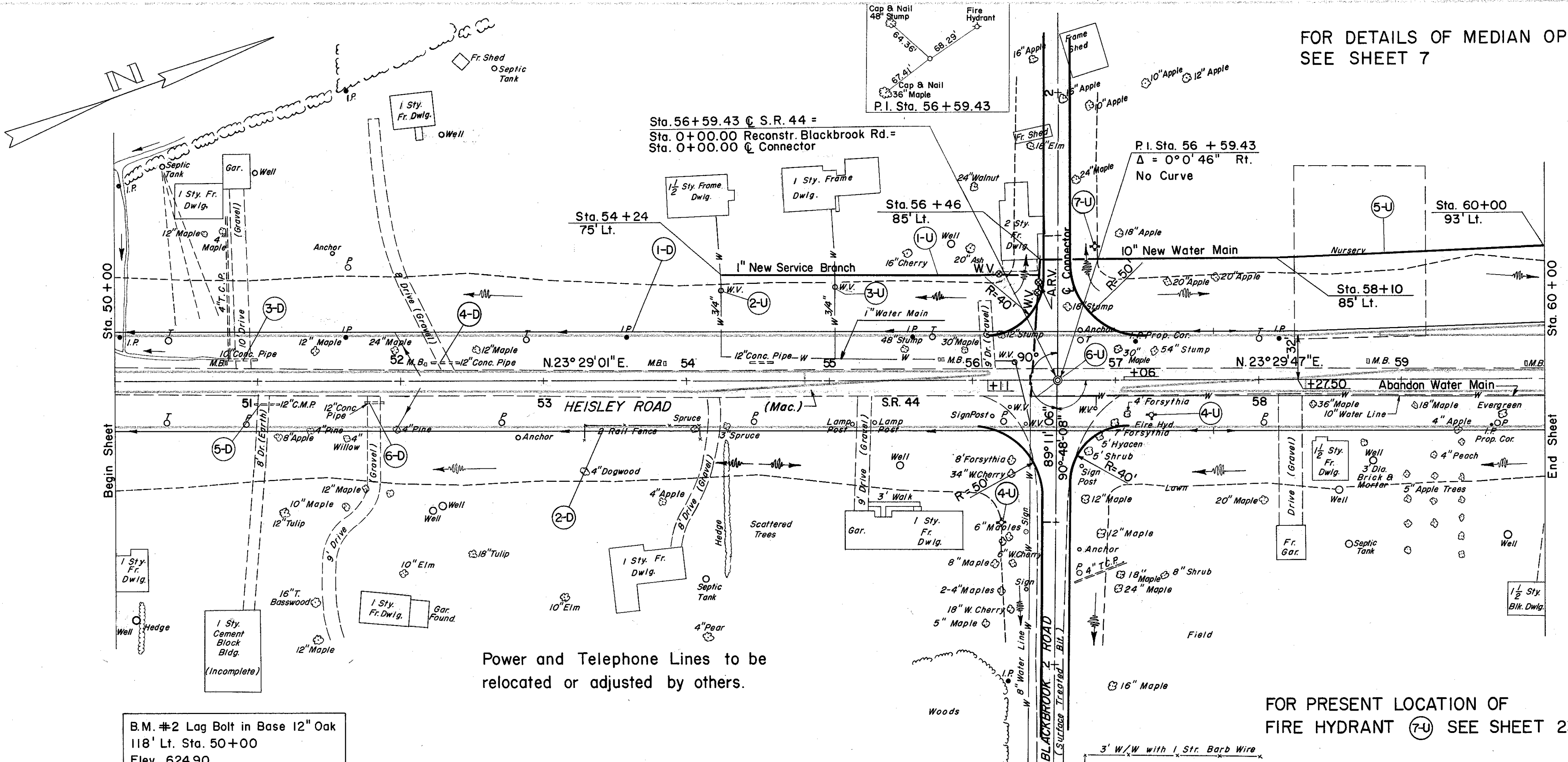


FOR DETAILS OF MEDIAN OPENING  
SEE SHEET 7



ⓓ DRAINAGE

REF. NO.	STATION	SIDE	PIPE		
			E-12 PIPE REMOVED 15" & UNDER	I-1 6" PIPE CLASS I-3 (DEEP)	I-5 6" 60° WYE
	FROM	TO	L.F.	L.F.	Eq.
I-D	50+00	60+00	LT.	1032	1
2-D	50+00	60+00	RT.	1032	1
3-D	50+80	51+00	LT.	20	
4-D	52+22	52+42	LT.	20	
5-D	50+98	51+16	RT.	18	
6-D	51+76	51+90	RT.	14	
TOTAL				2064	2

Ⓟ PAVEMENT

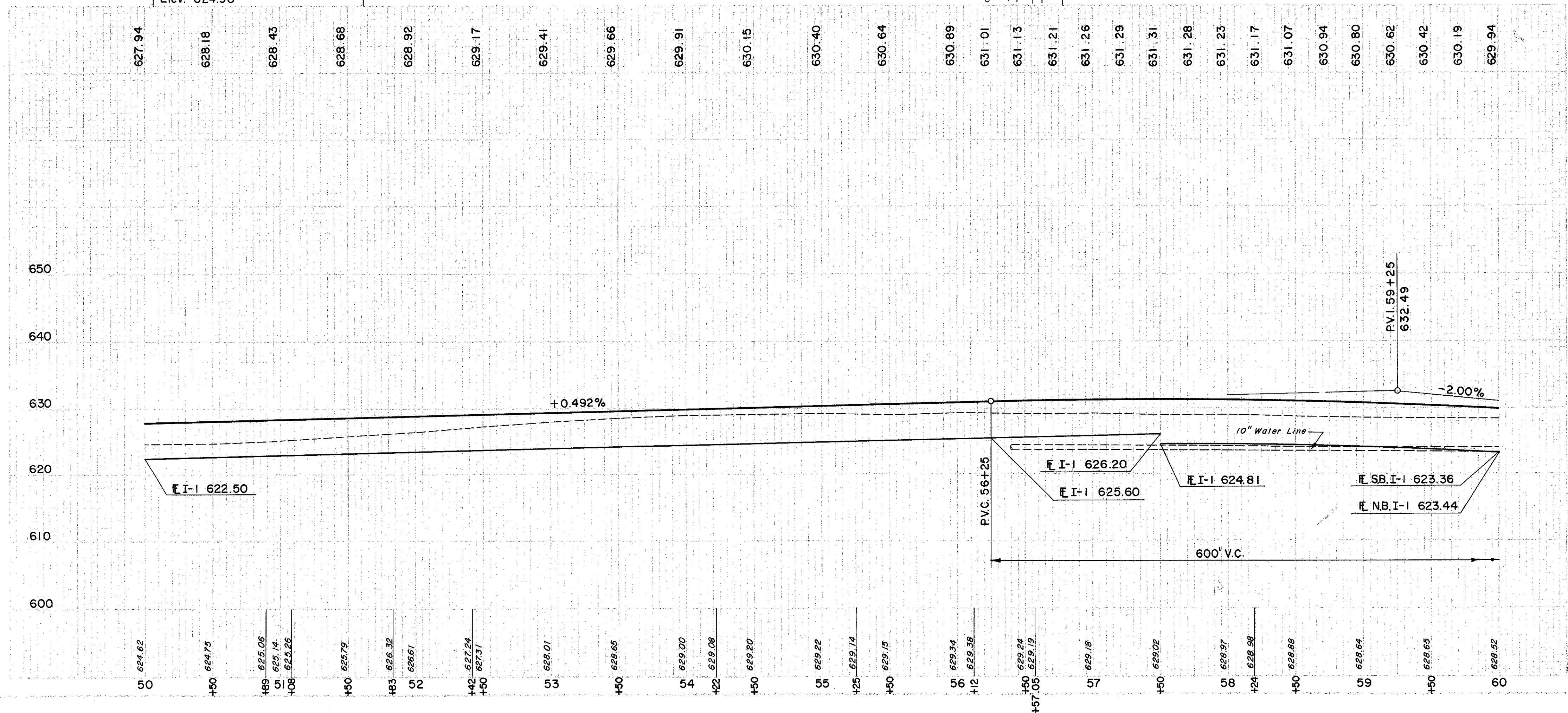
REF. NO.	STATION	SIDE	PAVEMENT							
			B-21 WATER- PROOFED AGGR. BASE COURSE	I-12 CONC. CURB TYPE 2A	I-18 STAB. CRUSHED AGGR.	I-21 PORT. CEM. CONC. MEDIAN TYPE I	I-22 SUB- BASE	T-31 BIT. MAT'L.	T-71 # 6 AGGR.	REINF. PORT. CEM. CONC. PAVT. 9'
	FROM	TO	C.Y.	L.F.	C.Y.	S.Y.	C.Y.	GAL.	C.Y.	S.Y.
I-D	50+00	60+00	127	1818	218	156	1430	380	12.2	610.4

Ⓤ UTILITIES

REF. NO.	STATION	SIDE	UTILITIES									
			I-124.07 1" NEW SERVICE BRANCHES	I-124.03 10" NEW WATER MAIN	VALVES & BOXES	AIR RELEASE VALVES	CAST IRON FITTINGS	FIRE HYDRANTS REMOVED & RESET	SERVICE STOPS & BOXES REMOVED & RESET	WATER METERS & BOXES REMOVED & RESET		
	FROM	TO	L.F.	L.F.			EACH					
I-U	54+24	56+46	222	1								
2-U	54+24											
3-U	55+04											
4-U	56+20											
5-U	56+45	60+00		447								
6-U	56+45											
7-U	56+86											
TOTAL			222	447			2	2	2	2		

FOR PRESENT LOCATION OF  
FIRE HYDRANT (7-U) SEE SHEET 23

B.M. #2 Lag Bolt in Base 12" Oak  
118' Lt. Sta. 50+00  
Elev. 624.90



EXCAVATION	1,229 C.Y.
EMBANKMENT	4,111 C.Y.
EMBANKMENT @ 20	4,933 C.Y.