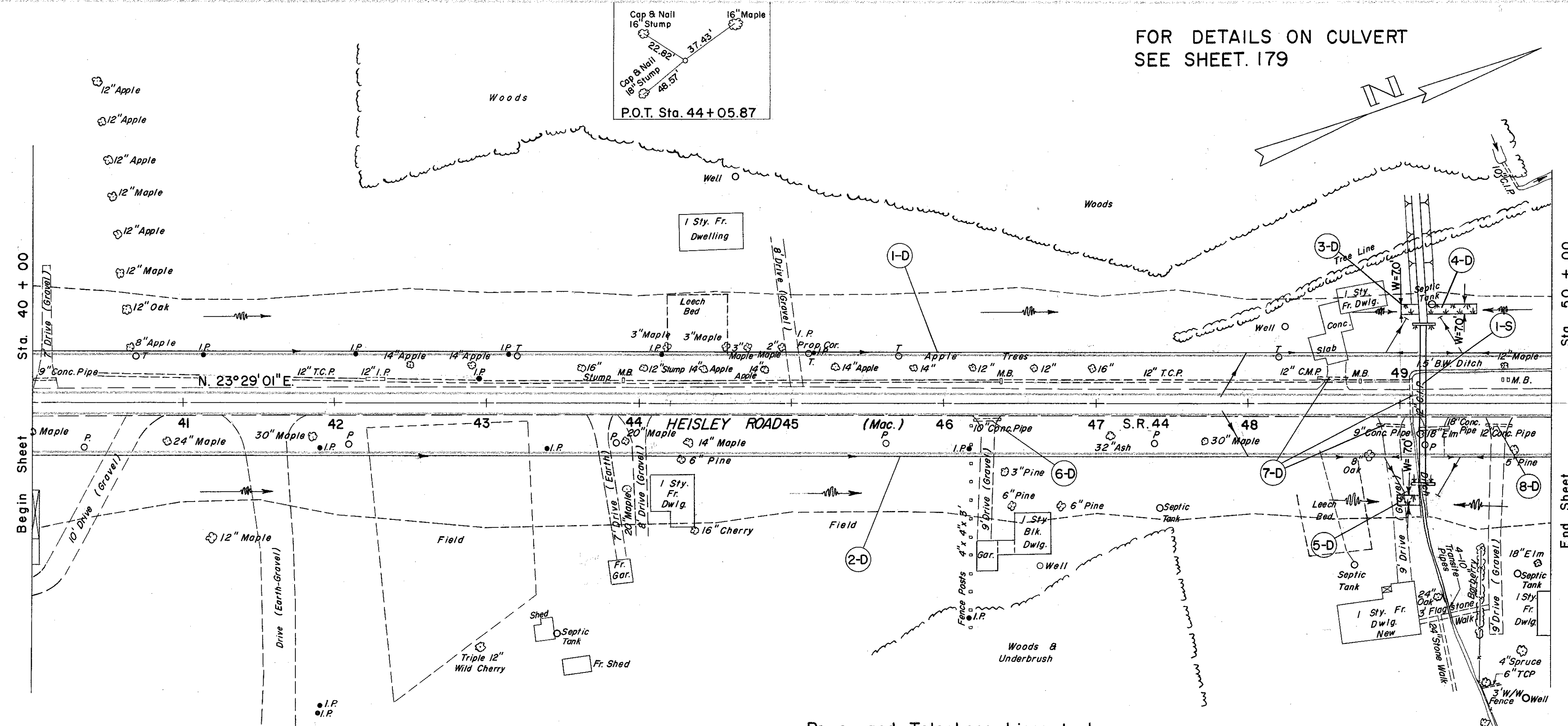


FOR DETAILS ON CULVERT
SEE SHEET 179

FOR DETAILS & QUANTITIES ON
CHANNEL SEE SHEET 102

LAKE COUNTY
LAK-44-722



Power and Telephone Lines to be
relocated or adjusted by others.

B.M. #1 Lag Bolt W. Side of Triple 12" Cherry
150' Rt. Sta. 43+00
Elev. 629.95

④ DRAINAGE

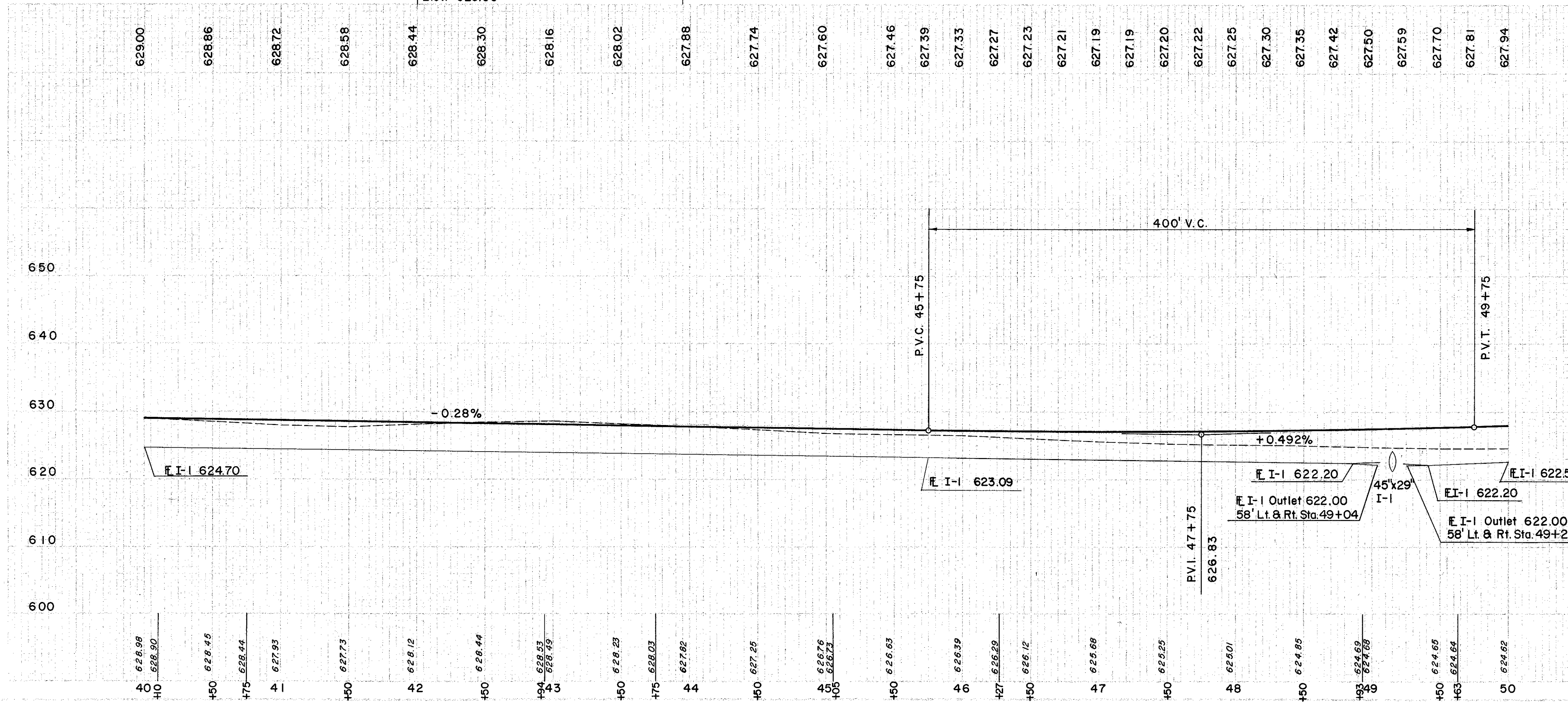
REF. NO.	STATION	SIDE	DRAINAGE			
			6" PIPE CLASS I-3 (DEEP)	8" PIPE CLASS F-1	6" 60° WYE	PIPE REMOVED 15" & UNDER
	FROM	TO	L.F.	EA.	S.Y.	L.F.
I-D	40+00	50+00	LT. 1062	20	3	
2-D	40+00	50+00	RT. 1062	20	3	
3-D	49+00	49+13	LT.			10
4-D	49+15	49+50	LT.			27
5-D	49+00	49+14	RT.			11
6-D	46+20	46+38	RT.			18
7-D	48+45	49+08	-			64
8-D	49+57	49+75	RT.			18
TOTAL			2124	40	6	48

⑤ STRUCTURES

REF. NO.	STATION	STRUCTURES			
		45' x 29" PIPE CLASS G-1 M-6.7(b)	CHANNEL EXC.	SODDING	MASONRY
		L.F.	C.Y.	S.Y.	C.Y.
I-S	49+15	106	2	7	14.0

⑥ PAVEMENT

REF. NO.	STATION	SIDE	PAVEMENT						
			B-21 WATER-PROOFED AGGR. BASE COURSE	I-12 CONC. CURB TYPE 2A	I-18 STAB. CRUSHED AGGR.	I-22 SUB-BASE	T-31 BIT. MAT'L.	#6 AGGR.	T-71 REINF. PORT. CEM. CONC. PAVT. 9"
	FROM	TO	C.Y.	L.F.	C.Y.	C.Y.	GAL.	C.Y.	S.Y.
I-P	40+00	50+00	148	2000	255	1274	444	14.2	5667



Excavation	3,592 C.Y.
Embankment	2,786 C.Y.
Embarkment - 20	3,343 C.Y.

S.R. 44 STA. 40+00 TO STA. 50+00